

1
2
3
4
5
6
7
8
9
10
11
12
13
14
15
16
17
18
19
20
21
22
23
24
25
26

Public consultation version
July 2019
CEFACT/___/___



UNITED NATIONS ECONOMIC COMMISSION FOR EUROPE
UNITED NATIONS CENTRE FOR TRADE FACILITATION
AND ELECTRONIC BUSINESS (UN/CEFACT)

**BUSINESS REQUIREMENTS SPECIFICATION
(BRS)**

Business domain: Certification

Business process: Preferential Certificate of Origin

Document identification: UNCEFACT 2021

Title: Preferential e-Certificate of Origin

UN/CEFACT International Trade and Business Domain: Agriculture

SOURCE: Project Team

ACTION: Public Review

DATE: 07 November 2021

STATUS: Draft for Public Review

Version: 0.1

27
28
29
30
31
32
33
34
35
36
37
38
39
40
41
42
43
44
45
46
47
48
49
50
51
52
53

Content

Change Log..... 4

1 BRS E-PREFERENTIAL CERTIFICATE OF ORIGIN..... **5**

 1.1 INTRODUCTION 5

 1.2 REFERENCES 5

 1.3 OBJECTIVE 6

 1.4 SCOPE 6

 1.5 CONTEXT 6

2 BUSINESS REQUIREMENTS ELABORATION **8**

 2.1 BUSINESS REQUIREMENTS LISTS 8

 2.2 DEFINITIONS BUSINESS TERMS 9

 2.3 BUSINESS REQUIREMENTS VIEW 9

 2.3.1 *Business Domain View* 9

 2.3.2 *Business Process Activity Diagram* 10

 2.3.3 *Business Partners View – Participants and Stakeholders* 13

 2.3.4 *Class diagram* 13

 2.4 BUSINESS INFORMATION ENTITIES 15

APPENDIX 1: MAPPING DOCUMENT CERTIFICATE OF ORIGIN **26**

APPENDIX 2: EXAMPLE OF A PAPER PREFERENTIAL CERTIFICATE OF ORIGIN (AANZFTA) **31**

54
55
56
57
58

DRAFT

59 **Document History**

60

Phase	Status	Date Last Modified
Initial	concept	4 th September 2019

61

Figure 1 – Document History

62 **Change Log**

63 The change log is designed to alert users about significant changes that occurred during the
64 development of the BRS instance.

65

Date of Change	Version	Paragraph Changed	Summary of Changes

66

Figure 2 - Document Change Log

67

68

69 **1 BRS e-Preferential Certificate of Origin**

70 The current practice of the issuance and exchange of certificates of origin associated with
71 the export of commodities represents a major opportunity to improve the integrity and
72 business processes of exporters, importers and customs.

73

74 **1.1 Introduction**

75 International trade clearance procedures require a number of documents to be presented to
76 satisfy the requirements of a variety of agreements. For example, in order for an importer to
77 gain preferential tariff treatment under a Free Trade Agreement, the importer must present a
78 valid Preferential Certificate of Origin (issued to the exporter) which states that the goods
79 being imported qualify as originating in the country which is party to the agreement. The
80 certificate of origin is issued the exporting regulator or by a body authorised by the
81 regulator such as a chamber of commerce. The document is signed and uniquely marked by
82 the issuing agency.

83 The trade clearance processes are managed largely by the transfer of paper documents
84 which are subject to loss, alteration and forgery. The majority of the paper documents fit the
85 same pattern; they are issued by a party in the exporting country but required by the
86 regulator of the importing country. One significant reason that paper has been difficult to
87 replace is that there is no direct trust relationship that allows an importing regulator to
88 confirm the identity of the document issuer in the exporting jurisdiction.

89 National single windows and port community systems provide a streamlined and automated
90 means for local entities (traders, third party logistics (3PL), agents, etc.) to interact with
91 their local regulators. Many nations now have some kind of single window system but
92 implementations are varied and usually unique to the local regulatory environment

93 This document seeks to initiate the process to standardise the data elements and message
94 structure to facilitate global implementation of electronic exchange of preferential
95 certificates of origin.

96 The outputs will be the harmonized XML schemas to support the information exchange for
97 the business process.

98 The structure of this document is based on the structure of the UN/CEFACT Business
99 Requirements Specification (BRS) document reference.

100
101

102 **1.2 References**

103 The list of specifications that have substantially influenced the development of the business
104 requirements specification document, including formal standards from UN/CEFACT,
105 OECD and other standards bodies, international treaties or agreements, industry sector and
106 institutional specifications:

- 107 • *UN/CEFACT Modelling Methodology User Guide (CEFACT/TMG/N093)*
- 108 • *UN/CEFACT Business Requirement Specification Document Template*
109 *(CEFACT/ICG/005)*

- 110 • *UN/CEFACT E-CERT BRS*
- 111 • *UN/CEFACT eQuality BRS*

112

113 **1.3 Objective**

114 The objective of this document is to propose a standard for the Business Processes, the
 115 Business Transactions and the Information Entities used in the process of exchanging data
 116 on certification of the preferential origin of a product.

117 The Business process is the detailed description of the way participants intend to play their
 118 respective roles, establish business relations and share responsibilities to interact efficiently
 119 with the support of their respective information systems. Each Business transaction is
 120 realized by an exchange of messages. The context and sequence in which these messages
 121 are used is presented as use cases in the document.

122 The business documents are composed of Business Information Entities (BIE), which when
 123 available, are taken from the library of reusable business information entities and when not
 124 found, are proposed as new Business Information Entities. The contents of the business
 125 documents and the Business Information Entities are presented using class diagrams.

126

127 **1.4 Scope**

128 The objective of this project is to standardise the business processes, the business
 129 transactions and the information entities of the electronic issuing and exchange of the
 130 preferential certificate of origin along the supply chain.

131 The project will describe the business process for the electronic exchange of:

- 132 - Data involved in the process of issuing a preferential certificate of origin
 133 between the producer / Third Party Logistics and the issuing agency
- 134 - The electronic exchange of preferential certificate of origin along the export-
 135 import process.

136 The data involved in the request for certification message contains:

- 137 - Information about the product (type, purpose, quantity, identification), locations
 138 and countries of export and import, parties involved and optional transport
 139 details

140 The relation between the physical product and the assigned electronic Preferential
 141 Certificate of Origin will be maintained along the supply chain.

142 The certificate is used by the exporter to prove the origin of the goods for taxation purposes.
 143 The certificate is checked by import customs.

144

145 **1.5 Context**

146

Context Category	Description
Business Process	Process of issuance and exchange of a Preferential Certificate of

	Origin
Product Classification	Preferential Certificates of Origin
Industry Classification	Cross industry
Geopolitical	Global
Official Constraints	Bilateral or multi-lateral FTA
Business Process Role	National regulator, seller, buyer, agent
Supporting Role	None
System Capabilities	Agreed level of security to protect data integrity Preferably a single windows implementation Database applications with uniquely identified electronic certificates with a system of authorizations and keys for retrieving information.

Figure 3 – Context Categories

147

148

149 **2 Business Requirements Elaboration**

150 **2.1 Business Requirements Lists**

151 The business requirements and key business information is presented in the list below,

152

Number	Business Requirement Statement
A.1	Preferential Certificate of Origin data messages must use existing standards and methods allowing to provide the information required
A.2	A consignment contains one or more trade line items
A.3	The trade line items in the consignment contain one or more products.
A.4	The consignment is exported from one country and imported in another country
A.5	The customs administration, chamber of commerce or any other organisation which has been assigned the role of issuing agency issues the Preferential Certificate of Origin.
A.6	Preferential Certificates of Origin which may be uniquely identified with a code.
A.7	The exporter informs the importer and/or customs import by sending a message with all information needed concerning the preferential origin of the goods.
A.8	The customs import can verify the validity of a Preferential Certificate of Origin in the database of the issuing agency.
A.9	The parties involved (exporter, Third Party Logistics, importer, customs) are informed of the Pref Certificate of Origin ID and/or other relevant information concerning the preferential origin of the goods.
A.10	Interoperability between different systems
A.11	Independent of type of product and national and / or geographical locations

153

Figure 4 – Business Requirement List

154

155

156

Number	Data Domains
B1	Exchanged certificate
B2	Consignment
B3	Product

157

Figure 5 – Data Domains

158

159 **2.2 Definitions Business Terms**

160 The names and definitions of business terms used in the requirements specification are
161 listed below:

Product	Any tangible output or service produced by human or mechanical effort or by a natural process.
Consignment	A separately identifiable collection of goods items to be transported or available to be transported from one consignor to one consignee via one or more modes of transport where each consignment is the subject of one single transport contract.
Trade line item	A collection of information specific to an item being used or reported on for trade purposes.
Party	An identified person, organization or agency.
Location	An identified geographical point or area where goods are loaded, unloaded or inspected.
Document	A collection of data for a piece of written, printed or electronic matter that provides information or evidence.
Preferential Certificate of Origin	Preferential Certificates of Origin may be issued by an agency or trader which has been assigned that role, to confirm that the goods concerned originated from that country.

162 **Figure 6 – Sample Definitions of Terms**

163

164 **2.3 Business Requirements View**

165 An outline description of the artefacts that form part of the BRS are given below and are
166 described using the UMM terminology.

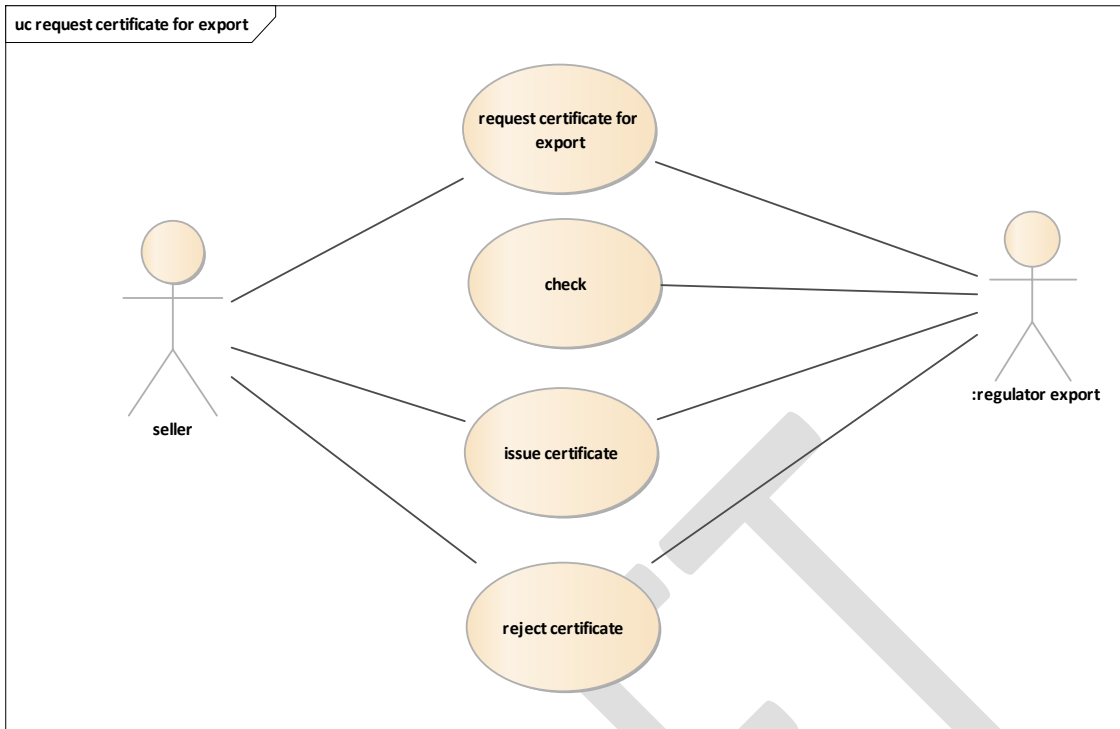
167

168 **2.3.1 Business Domain View**

169 The business processes that are included in the Business Domain are identified and
170 classified in this view.

171

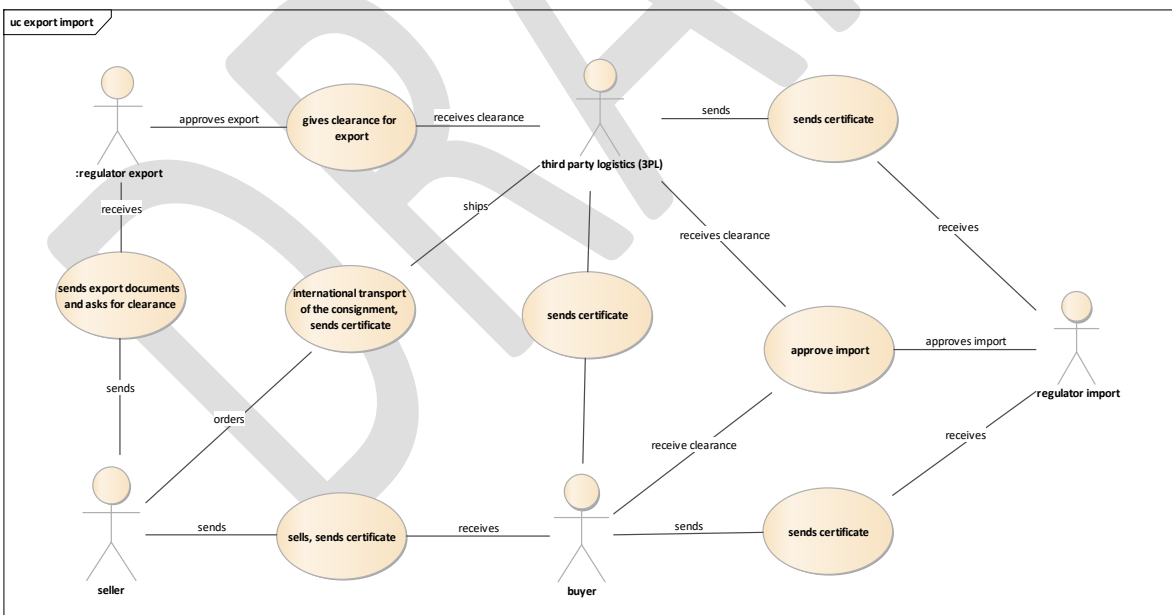
172 The Business Domain view is represented by two Use Case Diagrams.



173
174
175
176
177

Figure 7 - Business Domain Use Case Diagram 1 - Business Process ‘Request for e-Pref Certificate of Origin’

The request process of the certificate in use case 1 is not in scope. Only the issuance of the certificate is in scope.



178
179
180
181

Figure 8 - Business Domain Use Case Diagram 2 - Business Process ‘e-Pref Certificate of Origin information exchange in export and import processes’

182 **2.3.2 Business Process Activity Diagram**

183 A Business Process Activity Diagram is used to model the dynamics of each business
184 process, to depict a collaborative process involving the Business Partners and to denote

185 important states of business entities that are manipulated during the execution of a business
186 process.

189 In the list below some activities are optional or may slightly differ in different countries.

190

191 **List of activities in the process of certification of origin**

The seller initiates the certification process by requesting a pref certificate of origin for a consignment from the regulator export.	Request for certification
The regulator export issues the certificate.	Issues e-Preferential Certificate of Origin
The seller orders the international transport of the consignment.	Orders international transport
The seller send export documents to the regulator export and asks for clearance. Note that exporting regulators often do not need to sight the CoO.	May send e-Preferential Certificate of Origin
Regulator export gives clearance for export	Gives clearance
The seller informs the buyer that goods are being transported and sends the certificate	Sends e-Preferential Certificate of Origin
Buyer informs the regulator import of the estimated date and time arrival of the consignment.	Sends notification of arrival
The buyer sends all documents for the shipment to regulator import and/or to any other relevant trade partner.	Request for clearance import Sends e-Preferential Certificate of Origin
Buyer asks the regulator import clearance for import of the consignment	Request for clearance import, e-Preferential Certificate of Origin
Regulator import gives clearance for import	Gives clearance

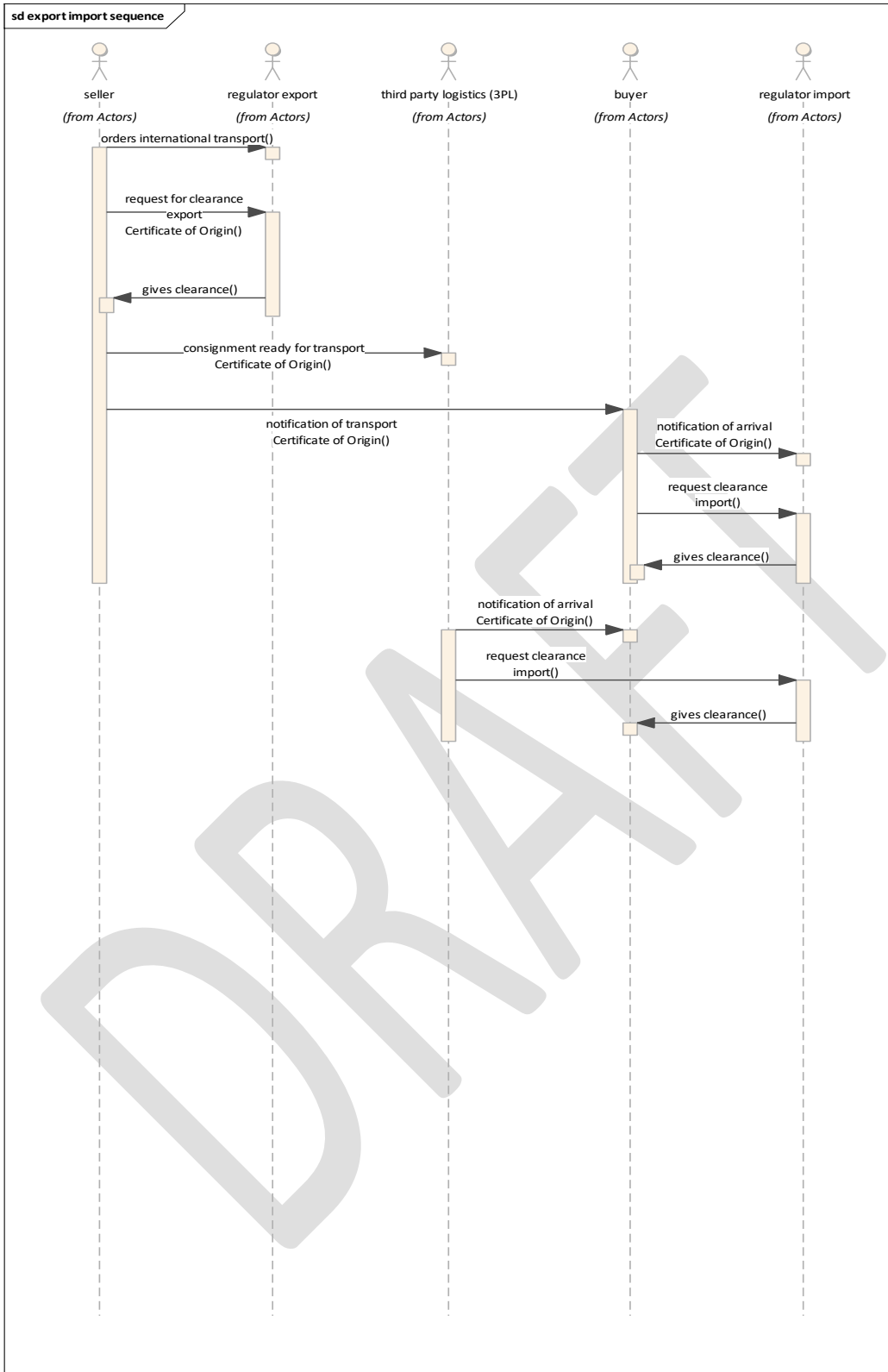
192

193

194

195

196



197

198

199

200 *Only activity steps with e-Certificate of Origin are in scope

201 Any additional documents (such as commercial invoices) required to accompany the Pref

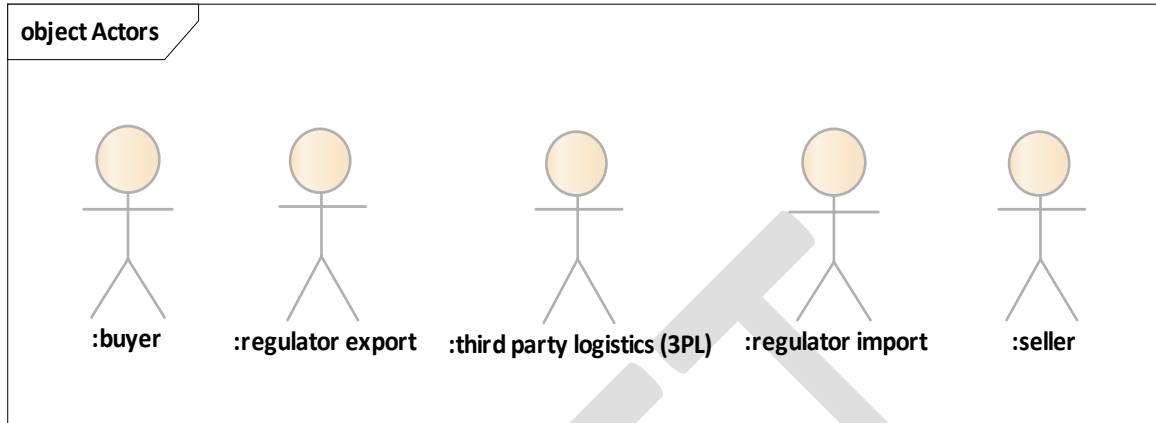
202 Certificate of Origin can be attached as Referenced Document.

203

204

205 **2.3.3 Business Partners View – Participants and Stakeholders**

206



207

208 **Figure 10 – Business Partner View Use Case Diagram**

209

210

211

212

213

214

215

216

217

218

219

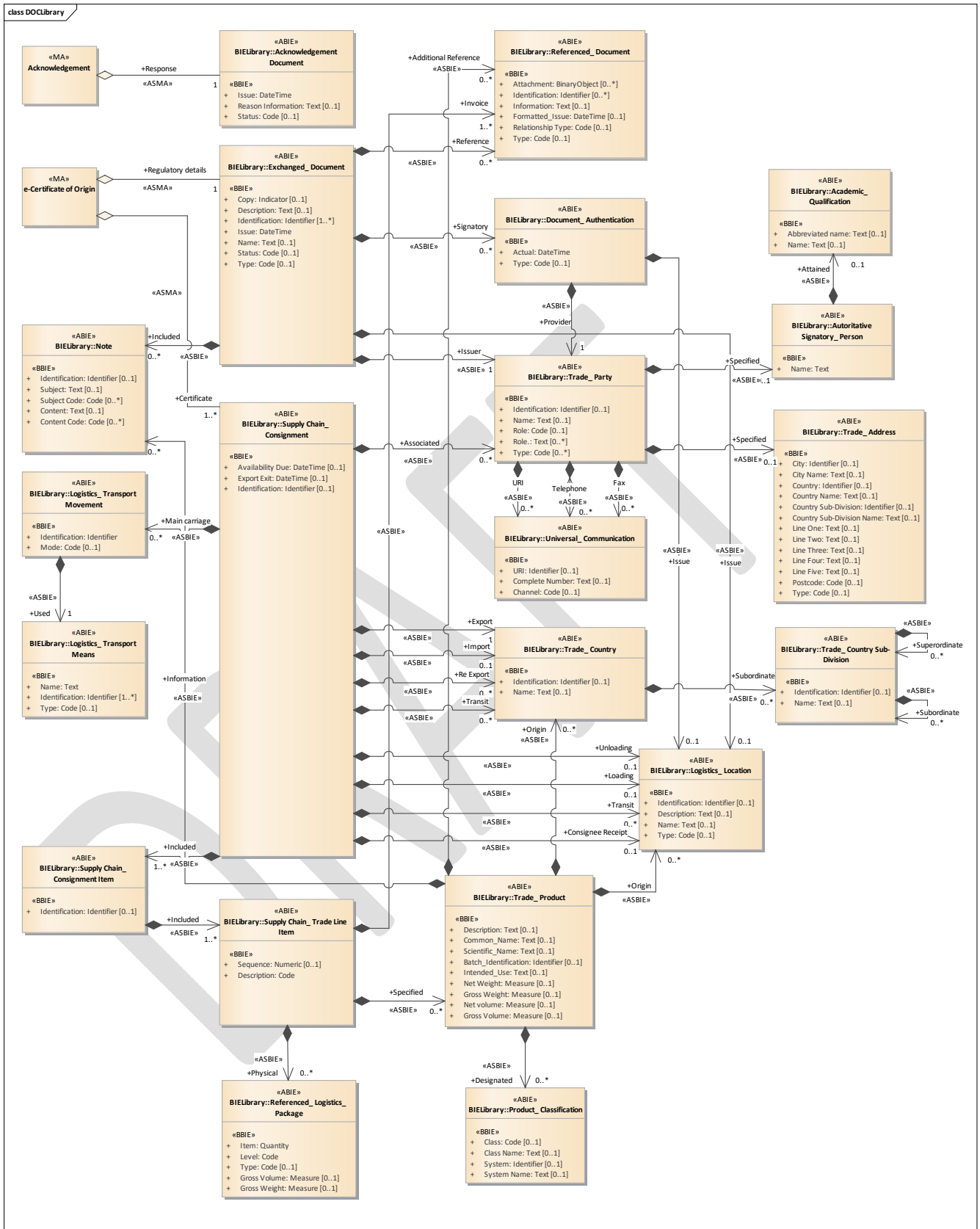
220

221

222 **2.3.4 Class diagram**

223 This model represents the set of data for the electronic exchange of information about the
224 Preferential Certificate of Origin.

225



226
227
228
229
230

Figure 12 – Class diagram e-Preferential Certificate of Origin

231 **2.4 Business information entities**

232

233 **Exchanged_Document**

234 Description: A collection of data for a piece of written, printed or electronic matter that is
 235 exchanged between two or more parties.

Mult.	Business term	Rel.	Type	Description
[1..*]	Identification	Att.	Identifier	The unique identifier of this exchanged document.
[0..1]	Name	Att.	Text	The name, expressed as text, of this exchanged document.
[0..1]	Description	Att.	Text	The textual description of this exchanged document.
[0..1]	Type	Att.	Code	The code specifying the type of exchanged document.
[0..1]	Status	Att.	Code	The code specifying the status of this exchanged document.
[1]	Issue	Att.	Date Time	The date, time, date time, or other date time value of the issuance of this exchanged document.
[0..1]	Copy	Att.	Indicator	The indication of whether or not this exchanged document is a copy.

236

Mult.	Association	Description
[0..*]	Exchanged_Document. Included. Note	A note included in this exchanged document
[0..*]	Exchanged_Document. Reference. Referenced_Document	Other documents referenced by this exchanged document.
[0..*]	Exchanged_Document. Signatory. Authentication	A signatory document authentication for this exchanged document.
[0..1]	Exchanged_Document. Issue. Logistics_Location	The location where this exchanged document has been issued.
[1]	Exchanged_Document . Issuer. Trade_Party	The party that issues this exchanged document.

237

238

239

240 **Note**

241 Description: A textual or coded description, such as a remark or additional information.

Mult.	Business term	Rel.	Type	Description
[0..1]	Subject	Att.	Text	The subject, expressed as text, of this note.
[0..*]	Content	Att.	Code	A code specifying the content of this note.
[0..1]	Content	Att.	Text	The content, expressed as text, of this note.
[0..*]	Subject	Att.	Code	A code specifying the subject of this note.
[0..1]	Identification	Att.	Identifier	The unique identifier for this note.

242

243 **Supply Chain_Consignment**

244 Description: A separately identifiable collection of goods items to be transported or
 245 available to be transported from one consignor to one consignee via one or more modes of
 246 transport where each consignment is the subject of one single transport contract.

Mult.	Business term	Rel.	Type	Description
[0..1]	Identification	Att.	Identifier	The unique identifier for this supply chain consignment.
[0..1]	Availability due	Att.	Date time	The date, time, date time, or other date time value when this supply chain consignment is due to be available.
[0..1]	Export exit	Att.	Date Time	The date, time, date time or other date time value when this supply chain consignment will exit, or has exited from the last port, airport, or border post of the country of export.

247

Mult.	Association	Description
[0..1]	Supply Chain_Consignment. Consignee receipt. Logistics_Location	The location at which this supply chain consignment will be or has been received by the consignee.
[1..*]	Supply Chain_Consignment. Included. Supply Chain_Consignment Item	A supply chain consignment item included in this supply chain consignment.
[0..*]	Supply Chain_Consignment. Main Carriage. Transport movement	A main carriage transport movement for this supply chain consignment.
[0..*]	Supply Chain_Consignment. Transit. Trade_Country	A transit country for this supply chain consignment.

[0..1]	Supply Chain_ Consignment. Import. Trade_ Country	The import country for this supply chain consignment.
[1]	Supply Chain_ Consignment. Export. Trade_ Country	The export country for this supply chain consignment.
[0..*]	Supply Chain_ Consignment. Associated. Trade_ Party	A trade party associated with this supply chain consignment.
[0..1]	Supply Chain_ Consignment. Unloading. Logistics_ Location	The logistics location where the supply chain consignment is unloaded.
[0..1]	Supply Chain_ Consignment. Loading. Logistics_ Location	The logistics location where the supply chain consignment is loaded.

248

249 Supply Chain_ Consignment Item

250 Description: An item within a supply chain consignment of goods separately identified for
251 transport and customs purposes.

Mult.	Business term	Rel.	Type	Description
[0..1]	Identification.	Att.	Identifier	The unique identifier for this supply chain consignment item.

252

Mult.	Association	Description
[1..*]	Supply Chain_ Consignment Item. Included. Supply Chain_ Trade Line Item	A trade line item included in this supply chain consignment item.

253

254 Trade_Party

255 Description: An individual, group, or body having a role in a trade business function.

Mult.	Business term	Rel.	Type	Description
[0..1]	Identification	Att.	Identifier	The unique identifier for this trade party.
[0..*]	Type	Att.	Code	A code specifying the type of trade party that is independent of its role.
[0..1]	Name	Att.	Text	The name expressed as text for this trade party.
[0..1]	Role	Att.	Code	The code specifying the role of this trade party.
[0..*]	Role	Att.	Text	A role, expressed as text, for this trade party.

256

Mult.	Association	Description
[0..1]	Trade_Party. Specified. Address	The postal address for this trade party
[0..1]	Trade_Party. Specified. Authoritative	The person specified to sign on behalf of

Mult.	Association	Description
	Signatory_ Person	this trade party
[0..*]	Trade_Party. Telephone . Universal_Communication	A telephone universal communication information for this trade party.
[0..*]	Trade_Party. Fax . Universal_Communication	A facsimile universal communication information for this trade party.
[0..*]	Trade_Party. URI . Universal_Communication	Uniform Resource Identifier (URI) universal communication information for a trade party.

257

258 **Universal_Communication**

259 Description: An exchange of information between persons and/or organizations.

Mult.	Business term	Rel.	Type	Description
[0..1]	URI	Att.	Identifier	The Uniform Resource Identifier (URI), such as a web or an email address, for this universal communication.
[0..*]	Complete number	Att	Text	The text string of characters that make up the complete number for this universal communication.

260

261 **Trade_Address**

262 Description: The location at which a particular trade related organization or person may be
263 found or reached.

Mult.	Business term	Rel.	Type	Description
[0..1]	Postcode	Att.	Code	The code specifying the postcode in the address.
[0..1]	Line One	Att.	Text	The first free form line, expressed as text, of the address.
[0..1]	Line Two	Att.	Text	The second free form line, expressed as text, of the address.
[0..1]	Line Three	Att.	Text	The third free form line, expressed as text, of the address.
[0..1]	Line Four	Att.	Text	The fourth free form line, expressed as text, of the address.
[0..1]	Line Five	Att.	Text	The fifth free form line, expressed as text, of the address.
[0..1]	City name	Att.	Text	The name, expressed as text, of the city, town or village of this trade address.
[0..1]	Country	Att.	Identifier	The unique identifier of this country for this trade address.

[0..1]	Country name	Att.	Text	The name, expressed as text, of this country for this trade address.
[0..1]	Country Sub-Division	Att.	Identifier	The unique identifier of the country sub-division for this trade address.
[0..1]	Country Sub-Division Name	Att.	Text	The name, expressed as text, of the sub-division of a country for this trade address.
[0..1]	Trade_ Address. City. Identifier	Att.	Code	The identifier of the city for this trade address, such as United Nations Location Code (UNLOCODE).
[0..1]	Type	Att.	Code	The code specifying the postcode of trade address.

264

265 **Authoritative Signatory_ Person**

266 Description: A person who is authorized to sign a document, such as a customs officer or
267 other government official.

Mult.	Business term	Rel.	Type	Description
[1]	Authoritative Signatory_ Person. Name.	Att.	Text	The name, expressed as text, of this authoritative signatory person.

268

Mult.	Association	Description
[0..1]	Authoritative Signatory_ Person. Attained. Academic_ Qualification	The academic qualification attained by this authoritative signatory person.

269

270

271 **Trade_Country**

272 Description: The area of land that belongs to a nation together with its properties such as
273 population, political organization, etc., used or referenced for trade purposes.

Mult.	Business term	Rel.	Type	Description
[0..1]	Identification	Att.	Identifier	The unique identifier for this trade country (Reference ISO 3166 and UN/ECE Rec 3.).
[0..1]	Name	Att.	Text	The name, expressed as text, of this trade country.

274

Mult.	Association	Description
[0..*]	Trade_Country. Subordinate. Trade_Coutry Sub-Division	A trade country sub-division that is subordinate to this trade country, such as a state, a county, a canton, a province.

275

276

277 **Trade_Country Sub-Division**

278 Description: A political or physical area or region within the political boundaries of a
 279 country used or referenced for trade purposes.

Mult.	Business term	Rel.	Type	Description
[0..1]	Identification	Att.	Identifier	The unique identifier for this trade country sub-division
[0..1]	Name	Att.	Text	The name, expressed as text, of this trade country sub-division.
Association				
Mult.	Association	Description		
[0..*]	Trade_Country Sub-Division. Superordinate. Trade_Country Sub-Division.	A superordinate country sub-division for this trade country sub-division.		
[0..*]	Trade_Country Sub-Division. Subordinate. Trade_Country Sub-Division.	A subordinate country sub-division within this trade country sub-division.		

280

281

282 **Referenced_Logistics_Package**

283 Description: A referenced self-contained wrapping or container within which goods can be
 284 contained for logistics purposes

Mult.	Business term	Rel.	Type	Description
[1]	Item	Att.	Quantity	The number of referenced logistics packages at this level.
[1]	Level	Att.	Code	The code specifying the level of this referenced logistics package.
[0..1]	Type	Att.	Code	The code specifying the type of referenced logistics package.
[0..1]	Gross Weight	Att.	Measure	The measure of the gross weight (mass) of this referenced logistics package and its contents.
[0..1]	Gross Volume	Att.	Measure	The measure of the gross volume of this referenced logistics package.

285

286

287 **Trade_Product**

288 Description: Any tangible output or service produced by human or mechanical effort or by a
 289 natural process for trade purposes.

Mult.	Business term	Rel.	Type	Description
--------------	----------------------	-------------	-------------	--------------------

[0..1]	Description	Att.	Text	The textual description for this trade product.
[0..1]	Net Weight	Att.	Measure	The measure of the net weight (mass) of this trade product.
[0..1]	Gross Weight	Att.	Measure	The measure of the gross weight (mass) of this trade product.
[0..1]	Net Volume	Att.	Measure	The measure of a net volume for this trade product.
[0..1]	Gross Volume	Att.	Measure	The measure of the gross volume for this trade product.
[0..1]	Batch_ Identification	Att.	Identifier	The batch identifier for this trade product.
[0..1]	Common_ Name	Att.	Text	The common name, expressed as text, for this trade product.
[0..1]	Scientific_ Name	Att.	Text	The scientific name, expressed as text, for this trade product.
[0..1]	Intended_ Use	Att.	Text	The intended use, expressed as text, for this trade product.

290

Mult.	Association	Description
[0..*]	Trade_ Product. Designated. Product_ Classification	A product classification designated for this trade product.
[0..*]	Trade_ Product. Origin. Trade_ Country	A country of origin for this trade product.
[0..*]	Trade_ Product. Additional_ Reference. Referenced_ Document	An additional referenced document for this trade product, such as a manual or a certificate.
[0..*]	Trade_ Product. Information. Note	An information note for this trade product.
[0..*]	Trade_ Product. Origin. Logistics_ Location	A location of origin for this trade product.

291

292

293

294

295

296

297

298 **Product_Classification**

299 Description: A systematic arrangement of products in classes or categories according to
300 established criteria.

Mult.	Business term	Rel.	Type	Description
[0..1]	System	Att.	Identifier	The unique identifier of the classification system for this product classification.
[0..1]	System Name	Att.	Text	The name, expressed as text, of the classification system for this product classification.
[0..1]	Class	Att.	Code	The code specifying the class for this product classification.
[0..1]	Class Name	Att.	Text	The class name, expressed as text, for this product classification.

301

302 **Logistics_Transport Means**

303 Description: The devices used to convey goods or other objects from place to place during
 304 logistics cargo movements.

Mult.	Business term	Rel.	Type	Description
[0..1]	Type	Att.	Code	The code specifying a type of logistics means of transport (Reference UNECE Recommendation 28).
[1..*]	Identification	Att.	Identifier	An identifier of this logistics means of transport, such as the International Maritime Organization number a vessel.
[1]	Name	Att.	Text	The name, expressed as text, of this logistics means of transport.

305

306 **Logistics_Transport Movement**

307 Description: The conveyance (physical carriage) of goods or other objects used for logistics
 308 transport purposes.

Mult.	Business term	Rel.	Type	Description
[0..1]	Mode	Att.	Code	The code specifying the mode, such as by air, sea, rail, road or inland waterway, for this logistics transport movement.
[1]	Identification	Att.	Identifier	The unique identifier for this logistics transport movement, such as a voyage number, flight number, or trip number.

309

Mult.	Association	Description
[1]	Logistics_Transport Movement. Used. Transport Means	The transport means used for this logistics transport movement.

310

311 **Referenced_Document**

312 Description: Written, printed or electronic matter that is referenced.

Mult.	Business term	Rel.	Type	Description
[0..1]	Type	Att.	Code	The code specifying the type of referenced document.
[0..1]	Relationship Type	Att.	Code	The code specifying the type of relationship between this referenced document and another artefact, such as a replacement of an original document.
[0..*]	Identification	Att.	Identifier	An unique identifier for this referenced document.
[0..*]	Attachment	Att.	Binary Object	A binary object that is attached or otherwise appended to this referenced document.
[0..1]	Information	Att.	Text	The information expressed as text for this referenced document.
[0..1]	Formatted_Issue	Att.	Date Time	The formatted date, time, date time, or other date time value for the issuance of this referenced document.

313

314 **Document_Authentication**

315 Description: A proof that a document is genuine.

Mult.	Business term	Rel.	Type	Description
[0..1]	Type	Att.	Code	The code specifying the type of document authentication.
[1]	Actual	Att.	Date Time	The actual date, time, date time, or other date time value of this document authentication.

316

Mult.	Association	Description
[1]	Document_Authentication. Provider. Trade_Party	The trade party providing the document authentication.
[0..1]	Document_Authentication. Issue. Logistics_Location	The logistics location where the document authentication is issued.

317 **Academic_Qualification**

318 Description: An academic achievement that is officially recognized.

Mult.	Business term	Rel.	Type	Description
--------------	----------------------	-------------	-------------	--------------------

[0..1]	Name	Att.	Text	The name, expressed as text, of this academic qualification.
[0..1]	Abbreviated Name	Att.	Text	The abbreviated name, expressed as text, of this academic qualification.

319

320 **Supply Chain_Trade Line Item**

321 Description: A collection of information specific to an item being used or reported on for
322 supply chain trade purposes.

Mult.	Business term	Rel.	Type	Description
[0..1]	Sequence	Att.	Numeric	The sequence number for this supply chain trade line item.
[1]	Description	Att.	Code	The code specifying a description of this supply chain trade line item.

323

Mult.	Association	Description
[1..*]	Supply Chain_Trade Line Item. Invoice. Referenced_Document	An invoice document of this trade line item.

324

325 **Logistics_Location**

326 Description: A logistics related physical location or place.

Mult.	Business term	Rel.	Type	Description
[0..1]	Identification	Att.	Identifier	The unique identifier for this logistics related location, such as a United Nations Location Code (UNLOCODE) or GS1 Global Location Number (GLN).
[0..1]	Name	Att.	Text	The name, expressed as text, of this logistics related location.
[0..1]	Type	Att.	Code	The code specifying the type of this logistics related location.
[0..1]	Description	Att.	Text	The textual description of this logistics related location.

327

328

329

330

331 **Acknowledgement Document**

332 Description: A document exchanged between parties for a business application level
333 acknowledgement of the receipt of information.

Mult.	Business term	Rel.	Type	Description
[1]	Issue	Att.	Date Time	The date, time, date time, or other date time value of the issuance of this acknowledgement document.
[0..1]	Reason_Information	Att.	Text	The reason information expressed as text for this acknowledgement document.
[0..1]	Status	Att.	Code	The code specifying the status of this acknowledgement document.

334

DRAFT

335

Appendix 1: Mapping Document Certificate of Origin

336

Information needs in e- Pref Certificate of Origin	ABIE, BBIE, ASBIE
Pref Certificate of Origin	ABIE: Exchanged_Document BBIE: <ul style="list-style-type: none"> - Name - Description - Type
Unique No certificate Number/code	ABIE: Exchanged_Document BBIE: <ul style="list-style-type: none"> - Identification - Copy: indicator
Name exporter/buyer/producer/cons ignor/ consignee,... And/or Identification code, tax number Title	ABIE: Trade_Party BBIE: <ul style="list-style-type: none"> - Identification - Role - Type - Name ABIE: Supply_Chain_Consignment ASBIE: Supply_Chain_Consignment. Associated. Trade_Party
Address	ABIE: Trade_Address BBIE: <ul style="list-style-type: none"> - City - Trade_Country - Sub-Division - Line One, Two, Three, Four, Five - Postcode - Type ABIE: Trade_Party ASBIE: Trade_Party. Specified. Trade_Address
Telephone number / fax / email	ABIE: Universal_Communication BIE: <ul style="list-style-type: none"> - Complete number - URI ASBIE: Trade_Party. Telephone. Universal_Communication Trade_Party. Fax. Universal_Communication

	Trade_Party. URI. Universal_Communication
Country of preferential origin (producing country)	<p>ABIE: Trade_Product</p> <p>ABIE: Trade_Country</p> <p>ABIE: Trade_Country Sub-Division</p> <p>ASBIE:</p> <p>Trade_Product. Origin. Trade_Country</p> <p>Trade_Product. Origin. Logistics_Location</p> <p>Trade_Country. Subordinate. Trade_Country Sub-Division</p> <p>Trade_Country Sub-Division. Subordinate. Trade_Country Sub-Division</p> <p>Trade_Country Sub-Division. Superordinate. Trade_Country Sub-Division</p>
Region or country of destination	<p>ABIE: Trade_Country</p> <p>BBIE:</p> <ul style="list-style-type: none"> - Identification - Name <p>ABIE: Trade_Country Sub-Division</p> <p>BBIE:</p> <ul style="list-style-type: none"> - Identification - Name <p>ABIE: Logistics_Location</p> <p>BBIE:</p> <ul style="list-style-type: none"> - Identification - Name <p>ABIE: Supply Chain_Consignment</p> <p>ASBIE:</p> <p>Supply Chain_Consignment. Export. Trade_Country</p> <p>Supply Chain_Consignment. Re Export. Trade_Country</p> <p>Supply Chain_Consignment. Transit. Trade_Country</p> <p>Supply Chain_Consignment. Consignee receipt. Logistics_Location</p> <p>Supply Chain_Consignment. Unloading. Logistics_Location</p> <p>Trade_Country. Subordinate. Trade_Country Sub-Division</p> <p>Trade_Country Sub-Division. Subordinate. Trade_Country Sub-Division</p> <p>Trade_Country Sub-Division. Superordinate. Trade_Country Sub-Division</p>
<p>Transport details:</p> <p>Means of transport</p> <p>Identifier of means of transport</p> <p>Name of the vessel</p> <p>Vessel / flight number / trip number</p>	<p>ABIE: Transport means</p> <p>BBIE:</p> <ul style="list-style-type: none"> - Name (Text) - Type - Identification: Identifier <p>ABIE: Logistics_Transport Movement</p> <p>BBIE:</p> <ul style="list-style-type: none"> - Identification - Mode

	<p>ABIE: Supply Chain_Consignment</p> <p>ASBIE:</p> <p>Supply Chain_Consignment. Main Carriage. Logistics_Transport Movement</p> <p>Logistics_Transport Movement. Used. Transport Means</p>
<p>Port / airport of loading (name)</p> <p>Port / airport of discharge (name)</p> <p>Shipment date</p>	<p>ABIE: Supply Chain_Consignment</p> <p>BBIE: Export Exit: Date time</p> <p>ABIE: Logistics_Location</p> <p>ASBIE:</p> <p>Supply Chain_Consignment. Loading. Logistics_Location</p> <p>Supply Chain_Consignment. Unloading. Logistics_Location</p> <p>Supply Chain_Consignment. Transit. Logistics_Location</p>
<p>Packages (number and kind)</p> <p>Quantity</p> <p>Weight</p> <p>Volume</p> <p>Date of invoice for each good</p> <p>Invoice numbers</p>	<p>ABIE: Supply Chain_Consignment Item</p> <p>BBIE:</p> <ul style="list-style-type: none"> - Identification <p>ABIE: Supply Chain_Trade Line Item</p> <p>BBIE:</p> <ul style="list-style-type: none"> - Sequence - Description <p>ABIE: Referenced_Document</p> <p>BBIE:</p> <ul style="list-style-type: none"> - Identification - Formatted_Issue <p>ABIE: Referenced_Logistics_Package</p> <p>BBIE:</p> <ul style="list-style-type: none"> - Item: Quantity - Level - Type - Nominal Gross Volume - Nominal Gross Weight <p>ASBIE:</p> <p>Supply Chain_Consignment. Included. Supply Chain_Consignment Item</p> <p>Supply Chain_Consignment Item. Included. Supply Chain_Trade Line Item</p> <p>Supply Chain_Trade Line Item. Physical. Referenced_Logistics_Package</p> <p>Supply Chain_Trade Line Item. Invoice. Referenced_Document</p>
<p>Type/nature of produce</p> <p>Harmonised system code (Rule of origin/origin criterion)</p>	<p>ABIE: Trade_Product</p> <p>BBIE:</p> <ul style="list-style-type: none"> - Description - Common_Name - Scientific_Name - Intended_Use

	<p>ABIE: Product_Classification</p> <p>BBIE:</p> <ul style="list-style-type: none"> - Class Code - Class Name - System Identifier - System Name <p>ABIE: Trade_Country</p> <p>ABIE: Trade_Country Sub-Division</p> <p>ABIE: Logistics_Location</p> <p>ASBIE:</p> <p>Supply_Chain Trade Line Item. Specified. Trade_Product</p> <p>Trade_Product. Designated. Classification</p> <p>Trade_Product. Origin. Trade_Country</p> <p>Trade_Country. Subordinate. Trade_Country Sub-Division</p> <p>Trade_Product. Origin. Logistics_Location</p>
<p>Marks, numbers, Weight Volume</p>	<p>ABIE: Trade_Product</p> <p>BBIE:</p> <ul style="list-style-type: none"> - Description - Batch Identification - Net Weight - Gross Weight - Net Volume - Gross Volume <p>ABIE: Referenced_Logistics_Package</p> <p>BBIE:</p> <ul style="list-style-type: none"> - Nominal Gross Volume - Nominal Gross Weight
<p>Declaration of pref origin Place of issue Date</p>	<p>ABIE: Exchanged_Document</p> <p>BBIE:</p> <ul style="list-style-type: none"> - Status - Description - Type - Issue <p>Exchanged_Document. Issue. Logistics_Location</p>
<p>Signatory name and title Signature Date Place of issue</p>	<p>ABIE: Exchanged-Document</p> <p>BBIE:</p> <ul style="list-style-type: none"> - Date - Issue <p>ABIE: Trade_Party</p> <p>BBIE:</p> <ul style="list-style-type: none"> - Identification

	<ul style="list-style-type: none"> - Role - Type - Name <p>ABIE: Autoritative_Signatory_Person</p> <p>BBIE:</p> <ul style="list-style-type: none"> - Name: text <p>ABIE: Document_Authentication</p> <p>BBIE:</p> <ul style="list-style-type: none"> - Actual - Type <p>ABIE: Academic_Qualification</p> <p>BBIE:</p> <ul style="list-style-type: none"> - Name - Abbreviated name <p>ASBIE:</p> <p>Document_Authentication. Provider. Trade_Party</p> <p>Trade_Party. Specified. Autoritative_Signatory Person</p> <p>Autoritative_Signatory Person. Attained. Academic_Qualification</p> <p>Exchanged_Document. Signatory. Document_Authentication</p> <p>Exchanged_Document. Issuer. Trade_Party</p>
Remarks Observations	<p>ABIE: Exchanged_Document</p> <p>ABIE: Referenced_Document</p> <p>BBIE:</p> <ul style="list-style-type: none"> - Attachment - Identification - Information - Formatted_Issue - Relationship Type - Type <p>ABIE: Note</p> <p>BBIE:</p> <ul style="list-style-type: none"> - Identification - Subject - Subject Code - Content - Content Code <p>ABIE: Trade_Product</p> <p>ASBIE:</p> <p>Exchanged_Document. Reference. Referenced_Document</p> <p>Exchanged_Document. Included. Note</p> <p>Trade_Product. Information. Note</p>

338
339
340

Appendix 2: Example of a paper preferential certificate of origin (AANZFTA)

ORIGINAL

1. Goods Consigned from (Exporter's name, address and country)			Certificate No. Form AANZ		
2. Goods Consigned to (Importer's/ Consignee's name, address, country)			AGREEMENT ESTABLISHING THE ASEAN – AUSTRALIA – NEW ZEALAND FREE TRADE AREA (AANZFTA) CERTIFICATE OF ORIGIN (Combined Declaration and Certificate) Issued in (Country) (see Overleaf Notes)		
3. Means of transport and route (if known) Shipment Date: Vessel's name/Aircraft etc.: Port of Discharge:					
			4. For Official Use <input type="checkbox"/> Preferential Treatment Given Under AANZFTA <hr/> <input type="checkbox"/> Preferential Treatment Not Given (Please state reason/s) <hr/> Signature of Authorised Signatory of the Importing Country		
5. Item number	6. Marks and numbers on packages	7. Number and kind of packages; description of goods including HS Code (6 digits) and brand name (if applicable)	8. Origin Conferring Criterion (see Overleaf Notes)	9. Quantity (Gross weight or other measurement), and value (FOB) (see Overleaf Notes)	10. Invoice number(s) and date of invoice(s)
11. Declaration by the exporter The undersigned hereby declares that the above details and statements are correct; that all the goods were produced in (country) and that they comply with the rules of origin, as provided in Chapter 3 of the Agreement Establishing the ASEAN-Australia-New Zealand Free Trade Area for the goods exported to (Importing country) Place and date, name, signature and company of authorised signatory			12. Certification On the basis of control carried out, it is hereby certified that the information herein is correct and that the goods described comply with the origin requirements specified in the Agreement Establishing the ASEAN-Australia-New Zealand Free Trade Area. Place and date, signature and stamp of Authorised Issuing Authority/ Body		
13. <input type="checkbox"/> Back-to-back Certificate of Origin			<input type="checkbox"/> Subject of third-party invoice	<input type="checkbox"/> Issued retroactively	
<input type="checkbox"/> <i>De Minimis</i>			<input type="checkbox"/> Accumulation		

341