

UNITED NATIONS
CENTRE FOR TRADE FACILITATION AND ELECTRONIC BUSINESS
(UN/CEFACT)

INTERNATIONAL SUPPLY CHAIN PROGRAMME DEVELOPMENT AREA
SUPPLY CHAIN & PROCUREMENT DOMAIN

BUSINESS REQUIREMENTS SPECIFICATION
(BRS)
CROSS INDUSTRY DESPATCH AND RECEIVE PROCESS

SOURCE: Automotive Project Team

ACTION: Public Review

DATE: 8 June 2021

STATUS: Draft v3

Disclaimer (Updated UN/CEFACT Intellectual Property Rights Policy – ECE/TRADE/C/CEFACT/ 2010/20/Rev.2)

ECE draws attention to the possibility that the practice or implementation of its outputs (which include but are not limited to Recommendations, norms, standards, guidelines and technical specifications) may involve the use of a claimed intellectual property right.

Each output is based on the contributions of participants in the UN/CEFACT process, who have agreed to waive enforcement of their intellectual property rights pursuant to the UN/CEFACT IPR Policy (document ECE/TRADE/C/CEFACT/2010/20/Rev.2 available at http://www.unecce.org/cefact/cf_docs.html or from the ECE secretariat). ECE takes no position concerning the evidence, validity or applicability of any claimed intellectual property right or any other right that might be claimed by any third parties related to the implementation of its outputs. ECE makes no representation that it has made any investigation or effort to evaluate any such rights.

Implementers of UN/CEFACT outputs are cautioned that any third-party intellectual property rights claims related to their use of a UN/CEFACT output will be their responsibility and are urged to ensure that their use of UN/CEFACT outputs does not infringe on an intellectual property right of a third party.

ECE does not accept any liability for any possible infringement of a claimed intellectual property right or any other right that might be claimed to relate to the implementation of any of its outputs.

9 **TABLE OF CONTENTS**

10 **1 INTRODUCTION.....4**

11 **2 OBJECTIVE.....4**

12 **3 AUDIENCE.....4**

13 **4 REFERENCE DOCUMENTS4**

14 **5 CHANGE LOG5**

15 **6 SCOPE.....5**

6.1 BUSINESS PROCESS ELABORATION.....6

16 6.1.1 *Business Process Flow*7

17 6.1.2 *Business Collaboration*9

18 **7 BUSINESS REQUIREMENTS.....11**

7.1 BUSINESS INFORMATION VIEW.....11

7.2 INFORMATION FLOW DEFINITION11

19 7.2.1 *Advise Despatch (Business Transaction)*11

20 7.2.2 *Correct Despatch Advice (Business Transaction)*13

21 7.2.3 *Advise Receipt (Business Transaction)*15

7.3 BUSINESS DOCUMENTS19

22 7.3.1 *Despatch Advice*19

23 7.3.2 *Receiving Advice*24

24 7.3.3 *Business Rules*28

25 7.3.4 *Definition of Terms*.....28

26

27 **TABLE OF FIGURES and TABLES**

28 **Figure 6-1 Positioning Cross Industry Despatch & Receive within BUY-SHIP-PAY Process Model..... 5**

29 **Figure 6-2 Scope of the despatch and receive process..... 6**

30 **Figure 6-3 Business Process Activity Diagram 8**

31 **Figure 6-4 Entity Life Cycle diagram..... 8**

32 **Figure 6-5 The Business Collaboration diagram..... 9**

33 **Figure 6-6 Business Collaboration Protocol - Activity Diagram..... 10**

34 **Figure 7-1 Business Information View Despatch And Receipt Of Goods 11**

35 **Figure 7-2 Business Transaction Use Case Diagram Advise Despatch 11**

36 **Figure 7-3 Activity Diagram Advise Despatch 12**

37 **Figure 7-4 Business Transaction Use Case Diagram Correct Despatch Advise 13**

38 **Figure 7-5 Activity Diagram Correct Despatch Advice 14**

39 **Figure 7-6 Business Transaction Use Case Diagram Advise Receipt 15**

40 **Figure 7-7 Activity Diagram Advise of Receipt of Goods 16**

41 **Figure 7-8 Business Entity Class Diagram – Despatch Advice & Receiving Advice 17**

42 **Figure 7-9 Business Entity Class Diagram – Trade Product..... 17**

43 **Figure 7-10 Business Entity Class Diagram – Trade Delivery 18**

44

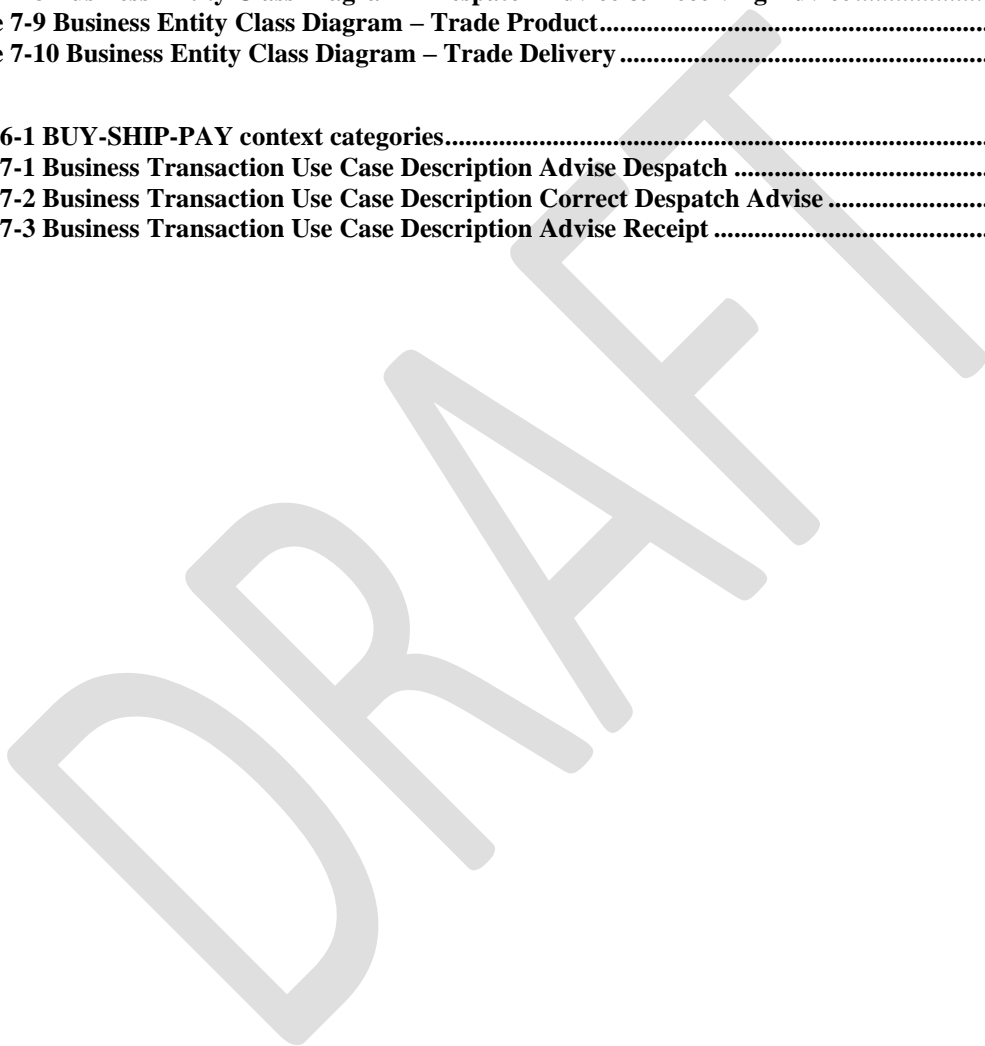
45 **Table 6-1 BUY-SHIP-PAY context categories..... 5**

46 **Table 7-1 Business Transaction Use Case Description Advise Despatch 12**

47 **Table 7-2 Business Transaction Use Case Description Correct Despatch Advise 13**

48 **Table 7-3 Business Transaction Use Case Description Advise Receipt 15**

49



50 **1 Introduction**

51 The current practice of the exchange of business documents by means of telecommunications –
52 usually defined as e-Business presents a major opportunity to improve the competitiveness of
53 companies, especially for Small and Medium Enterprises (SME). Started as an initiative by
54 CEN/ISSS Workshop eBES, the European Expert Group 1 (EEG1) – Supply Chain & e-
55 Procurement developed the Cross Industry Despatch and Receive process in 2006. The Cross
56 Industry Despatch and Receive process has been compiled using the EUROFER ESIDEL version
57 1.0 and the Boost Aero version 1.0 as a base, with contributions and submissions from:
58 EUROFER, ODETTE, GS1, EDIFrance, EDIBUILD and Boost Aero. After the UN/CEFACT
59 Forum meeting in Dublin in March 2007, the BRS was further developed with requirements
60 contributed from TBG1 members such as GS1, UBL, EDIFrance, US Department of Defense,
61 JAIF and others. Also requirements were implemented from Construction (TBG 6). The structure
62 was reworked according to the Buy-Ship-Pay process model developed by TBG 14. The high-
63 level entity model was based on the Buy-Ship-Pay information model jointly developed by TBG1,
64 TBG2, TBG3, TBG5 and TBG18.

65 **2 Objective**

66 The objective of this document is to standardise the Business processes, the Business transactions
67 and the Information entities of the despatch and receive process used by the industries in the
68 supply chain. The business process is the detailed description of the way trading partners intend
69 to play their respective roles, establish business relationships and share responsibilities to interact
70 efficiently with the support of their respective information systems. Each Business transaction is
71 realised by an exchange of Business documents (also called messages). The sequences in which
72 these documents are used, composes a particular instance of a scenario and are presented as
73 activity diagrams in the document.

74 **3 Audience**

75 The audience of this document is all users who are interested in the delivery process and
76 information data.

77 **4 Reference Documents**

78 Knowledge and application of the following standards is crucial to the development of quality
79 business requirements specifications. Other key references are shown in the appropriate part
80 of the document.

- 81 • UN/CEFACT Common Supply Chain BRS, Release 1
- 82 • UN/CEFACT Buy-Ship-Pay BRS, version 1.0
- 83 • UN/CEFACT Modeling Methodology (CEFACT/TMG/N090R10, November 2001)
- 84 • UN/EDIFACT – Despatch advice message, Receiving advice message
- 85 • UN/CEFACT Business Requirement Specification – Template v2.0.1 (May 2012)
- 86 • UN/CEFACT BRS_CrossIndustryDeliveryProcess_v1.013.1 (Sep 2008).

87 5 Change log

Date of Change	Version	Changed	Summary of Changes
20-feb-2009	1.00.13	-	Version sent for approval to TBG Steering
17-jan-2019	2.0		Initial update
12-apr-2019	2.0	Added: fig. 8.1, §8.3.2 Changed: fig 8.8, 8.9, 8.10, §7.1.2, §8.3.1	Team review
09-aug-2019	2.0	Minor editorial changes	Final version (after public review)
15-may-2021	3.0		Addition of global automotive requirements

88 6 Scope

89 This section describes the extent and limits of the business process within the supply
90 chain being described in this document.

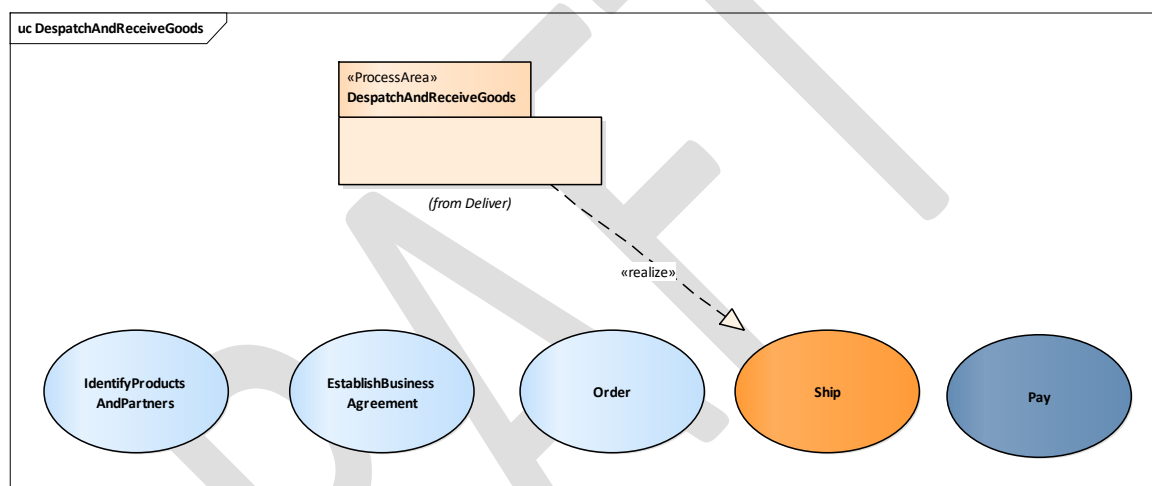


Figure 6-1 Positioning Cross Industry Despatch & Receive within BUY-SHIP-PAY Process Model

Table 6-1 BUY-SHIP-PAY context categories

Categories	Description and Values
Business Process	Despatch and Receive process in the supply chain BUY-SHIP-PAY/Procurement&Sales/Delivery
Product Classification	All
Industry Classification	All
Geopolitical	Global
Official Constraint	None
Business Process Role	ShipFrom, ShipTo
Supporting Role	Carrier
System Capabilities	No limitations

105

106

107

108

109

110

111

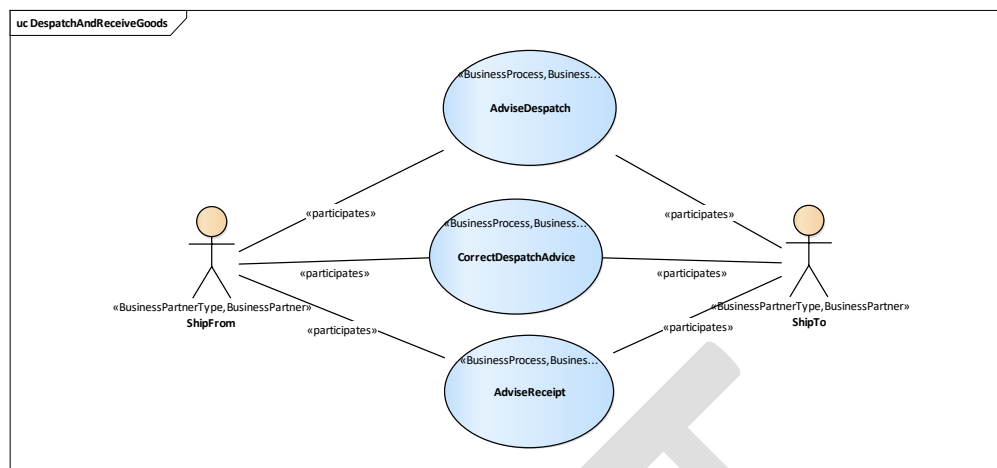
112

Note:

The processes defined apply only to the collaboration between Ship From (sender of goods) and Ship To (receiver of goods). Internal processes and communication with third parties (such as Transporters, Cross Docks, Warehouses, etc.) are outside the scope of this BRS. However, the Carrier (Transporter) is in a supporting role in the process, as some of the generated documents will be carried by them for Proof-of-Delivery (POD) and they may also re-use information such as locations, weight and transport packaging.

113 6.1 Business Process Elaboration

114 The processes contained in the Despatch and Receive process are shown in the following Use
115 Case Diagram.



116
117 **Figure 6-2 Scope of the despatch and receive process**

118 The despatch and receive process covers the physical delivery of goods from one physical site
119 to another according to agreements between the supplier and customer in order to fulfill a
120 delivery contract.

121 The process requires an existing commercial contract between a customer/buyer and a
122 supplier/ seller. This contract can be established in several ways, as spot order, call off order,
123 if necessary, further detailed in a delivery instruction etc. Prior to the delivery, the customer
124 and the supplier must also agree upon the delivery conditions and the way the transportation
125 of goods is to be organised.

126 **Note:**

127 Ship From may be the supplier of the goods, but not necessarily. Similarly, the Ship To may
128 be the customer of the goods, but not necessarily. Therefore, the terms Supplier and Customer
129 are not applicable to describe these partners. An analogous situation applies to Ship To. For
130 instance, as part of a shipping process, the goods may be sent to a Logistics Service Provider
131 (LSP) e.g., Packing or Consolidation company. In this case the Ship To Party is the LSP.
132 When the Goods have been re-packed then the Ship From Party will be the LSP.

133 In the Despatch and Receive process it is foreseen to transmit information between the Ship
134 From and the Ship To concerning:

- 135
136
- 137 • The shipment and the consigned goods despatched by the Ship From.
 - 138 • If necessary, corrected details of a shipment and/or the consigned goods despatched by
the Ship From.
 - 139 • The receipt of the shipment and the consigned goods by the Ship To.

140 The Despatch and Receive process covers the way in which information is provided on the
141 despatch of goods and on the receipt of goods.

142 Providing information to the Ship To of the despatch of goods at (or near to) the moment of
143 departure, allows the Ship To to prepare for the reception of the goods. Providing information
144 about the reception of the goods allows the Ship From to check the correct arrival of the
145 despatched goods and the information may be used as a trigger to send an invoice to the
146 customer.

147 **Note:**

148 The content of the Despatch Advice must be sufficient to initiate a consistent Invoicing
149 process. Of course, an Invoice itself may also be sufficient, as in the case of Point-Of-Sale
150 systems, but a Despatch Advice is more explicit and indicates the actual movement and may
151 also be required where the pricing information is either not available or is sensitive. The focus
152 of this document is on logistics data and so will provide information on packaging and other
153 information to aid stock control.

154 Information exchanged to inform the Ship To about the goods despatched may be structured
155 as described below:

- 156 • Item based, giving the details of a consignment from the point of view of the goods
157 despatched.
 - 158 • Package based, giving the details of a consignment from the point of view of the
159 package used for the transportation, i.e., the handling units and the package units within
160 which the goods are despatched.
 - 161 • A combination of both approaches is also possible.
- 162

163 In certain circumstances, the Ship From may need to correct the despatch advice.

164 Once the Ship To has received the goods, they will check them against the goods advised in
165 the Despatch Advice. The Ship To may then send to the Ship From, a confirmation of the
166 reception of the goods and, if applicable, a notification of any discrepancies.

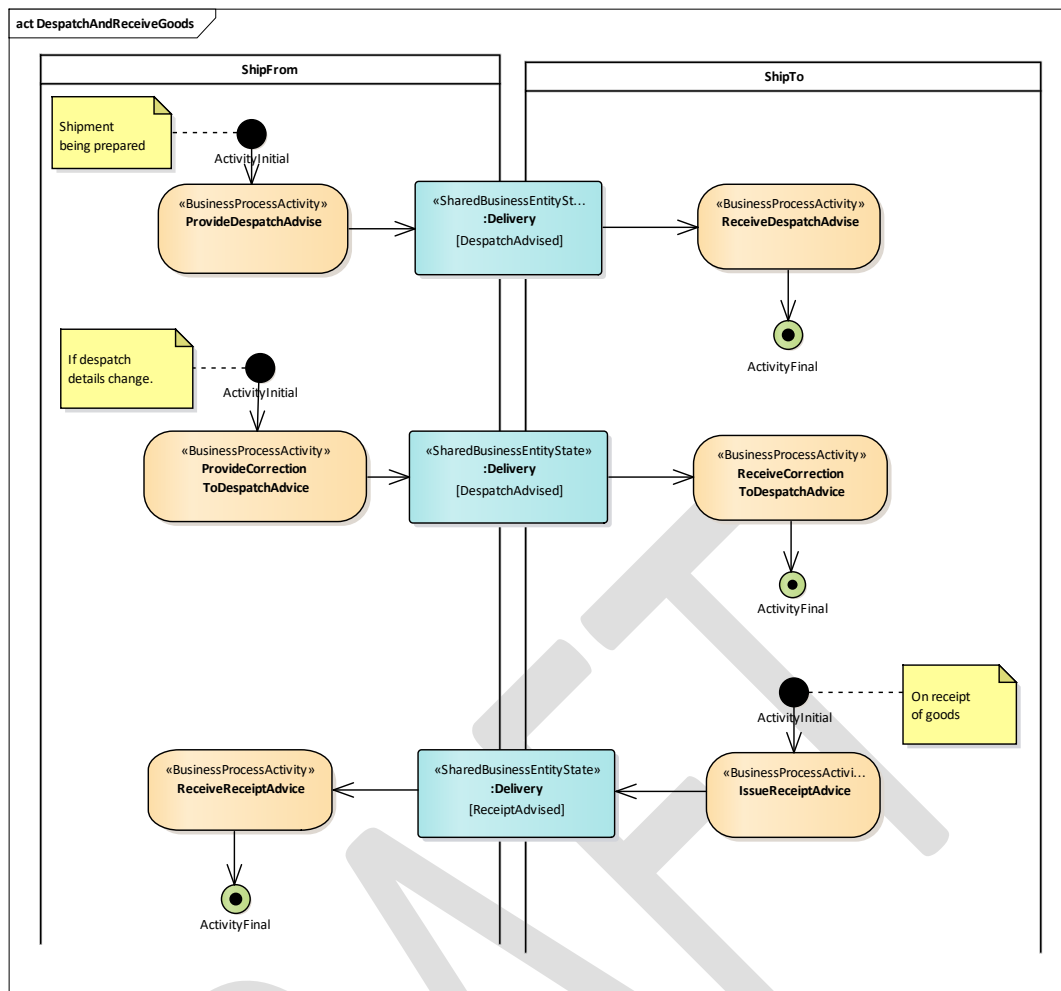
167 **6.1.1 Business Process Flow**

168 Ship From prepares shipment according to previously received instructions or in agreement
169 with terms of delivery as specified in an order. Parallel to the preparation of the physical
170 shipment all necessary data for an electronic Despatch Advice message is collected and
171 compiled. The message is being sent from Ship From to Ship To.

172 In the event of changes in the shipment after the transmission of the despatch advice the Ship
173 From compiles a corrected Despatch Advice message and sends it to Ship To.

174 After receiving and – if necessary – inspection of the goods the Ship To may create an electronic
175 Receiving Advice message. This message confirms the received goods and their quantity. It
176 may contain statements concerning the conditions of received goods and their compliance with
177 the order or otherwise agreed quality standards.

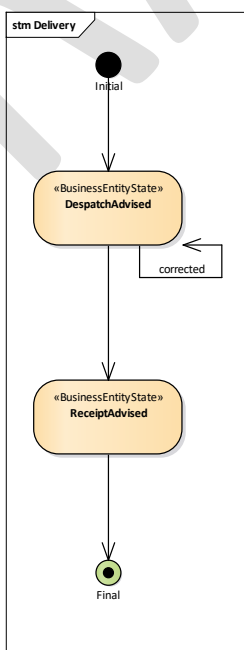
178 The activities involved in the Despatch and Advice processes are shown in figure 7-3 together
179 with the states of the “Delivery” Business Entity that are changed by the processes.



180
181
182
183
184

Figure 6-3 Business Process Activity Diagram

The states that the Delivery Business Entity may assume as a result of the Despatch and Receive business process are shown in the Entity Life Cycle diagram figure 7-4.



185
186

Figure 6-4 Entity Life Cycle diagram

6.1.2 Business Collaboration

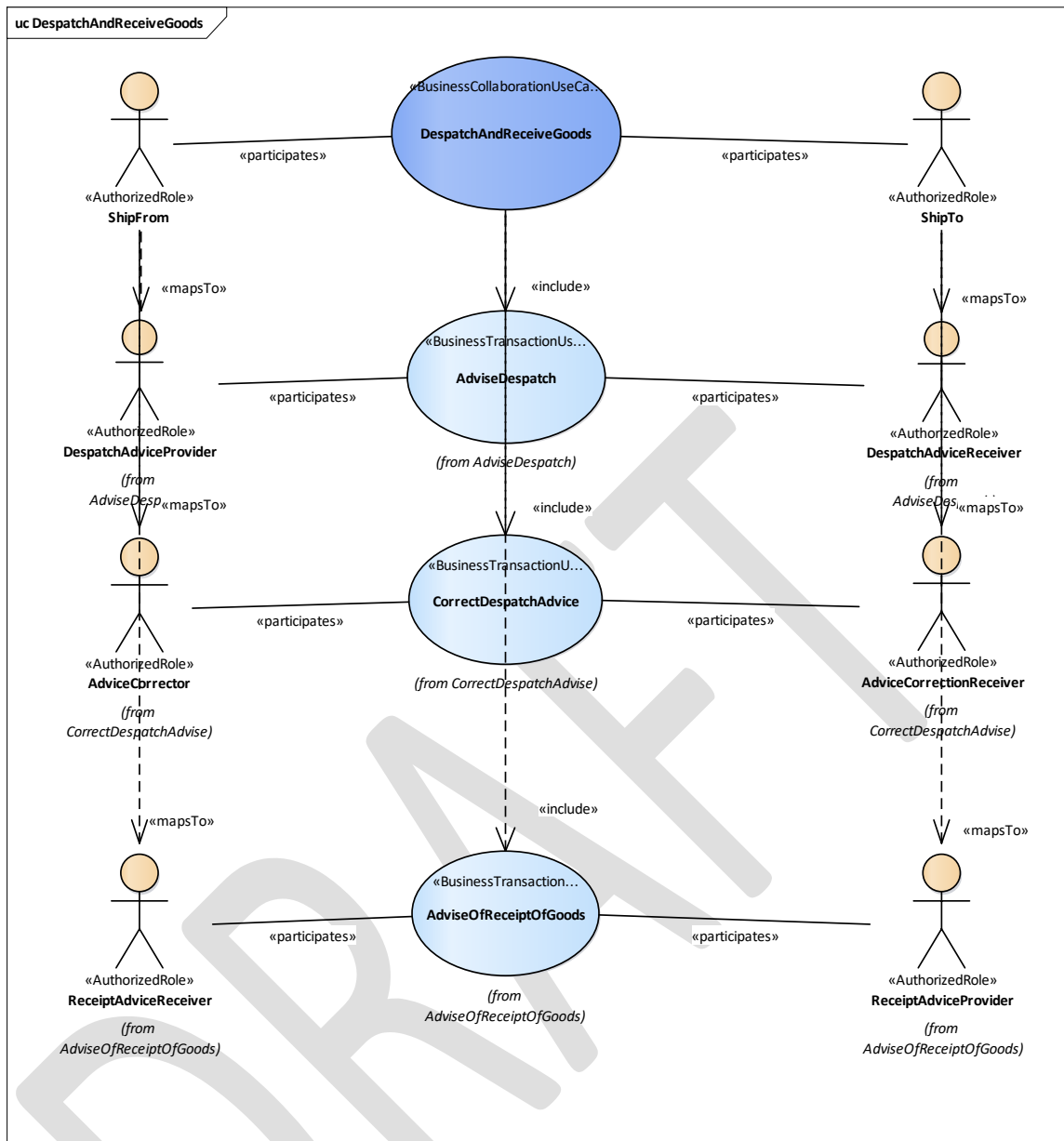


Figure 6-5 The Business Collaboration diagram

The Business Collaboration diagram figure 6-5 (above) shows the three transactions that make up the Despatch and Receive process. It also links the authorised roles from each transaction to the Business Partner Types (Ship From and Ship To). The logical order in which these transactions may occur is shown in the Business Collaboration Protocol diagram figure 6-6 (below). The Use Case Diagrams and description of the three business transactions are shown in section 5.

In order to provide a reliable validation path for invoicing, certain references in the business transactions are necessary:

Despatch Advice message or Delivery Note:

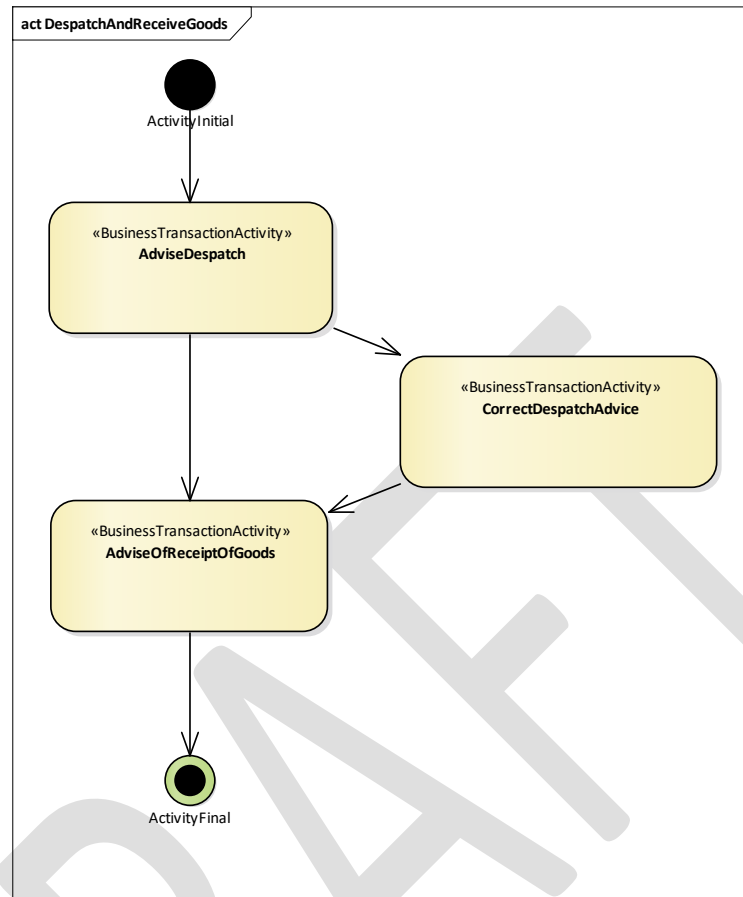
- Order Reference

Receiving Advice message or Goods Receipt Note:

- Despatch Advice/Delivery Note Reference
- Order Reference (optional)

206 Other references may be included according to specific business requirements.

207
208 In case of a replaced Despatch Advice message, a reference to the preceding message may be
209 included. The same may apply for a replaced Receiving Advice message.



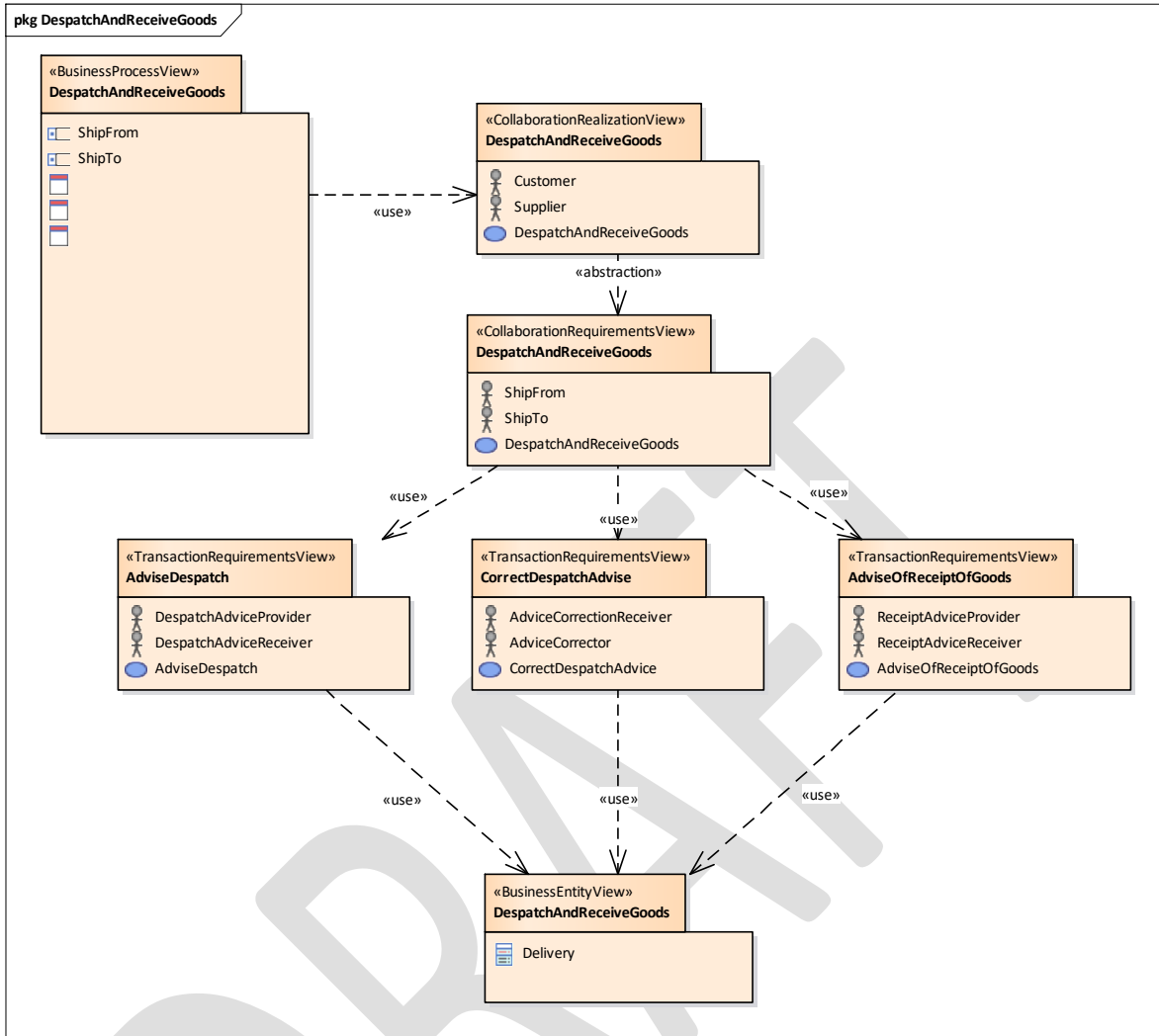
210

211

Figure 6-6 Business Collaboration Protocol - Activity Diagram

212 **7 Business Requirements**

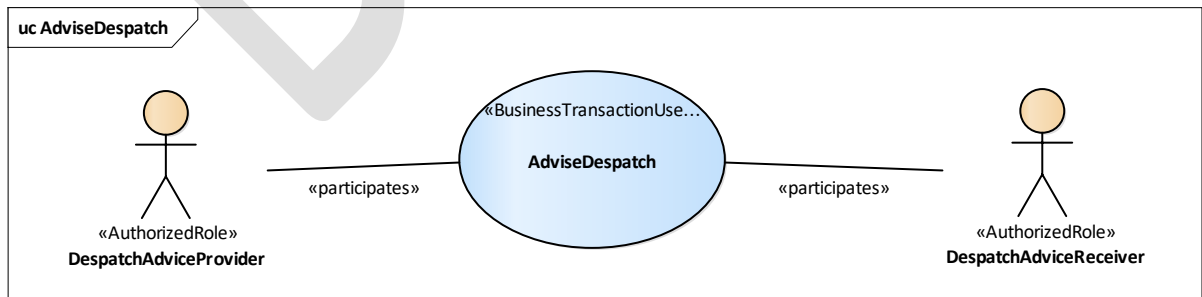
213 **7.1 Business Information View**



214
215 **Figure 7-1 Business Information View Despatch And Receipt Of Goods**

216 **7.2 Information flow definition**

217 **7.2.1 Advise Despatch (Business Transaction)**



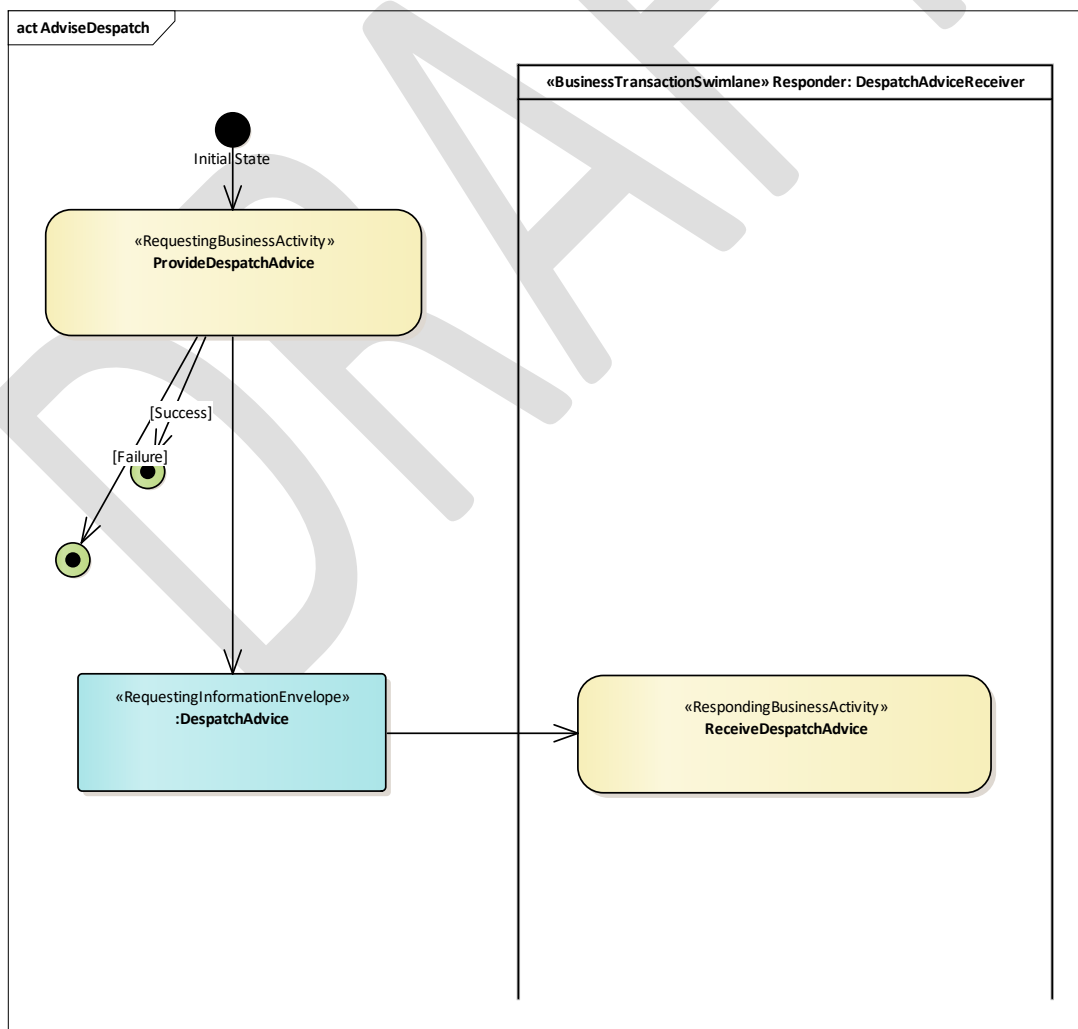
218
219 **Figure 7-2 Business Transaction Use Case Diagram Advise Despatch**

220

Table 7-1 Business Transaction Use Case Description Advise Despatch

Identifier	Advise Despatch
Business Message Type	Despatch Advice
Description	Once the goods are ready to leave (or have just left) the ship from location the Ship From sends a despatch advice to the Ship To to inform him about the despatch. Once the Ship To has received the despatch advice, the process ends.
Partner Types	Ship From, Ship To
Authorized Roles	Despatch Advice Provider, Despatch Advice Receiver.
Legal Implications	
Initial/Terminal Events	<ul style="list-style-type: none"> • Initial: the goods are ready to leave (or have just left) the ship from location. • Terminal: the Ship To has received the despatch advice (and can prepare for reception of the goods)
Scope	Information exchange between Ship From and Ship To concerning the despatch of goods.
Boundary	
Constraints	

221



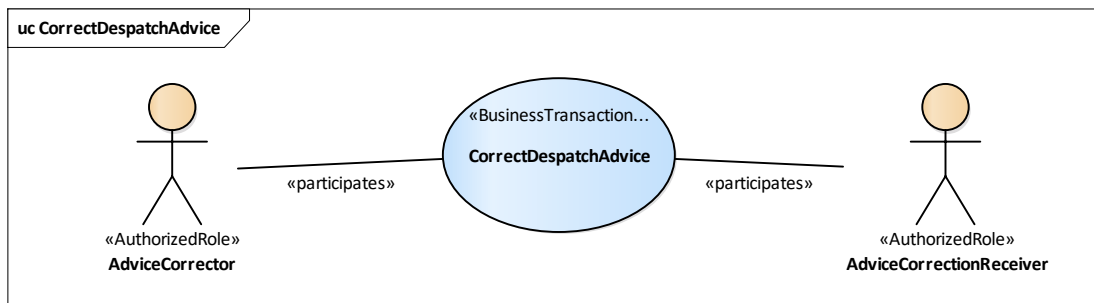
222

223

Figure 7-3 Activity Diagram Advise Despatch

224

7.2.2 Correct Despatch Advice (Business Transaction)



225

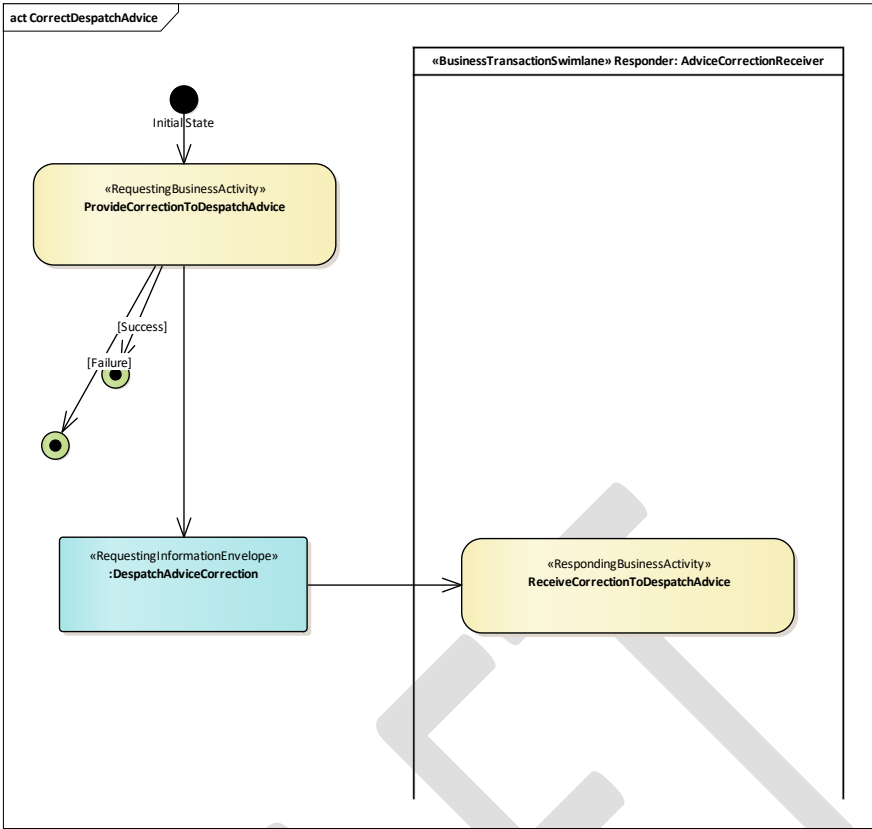
226

227

Figure 7-4 Business Transaction Use Case Diagram Correct Despatch Advice

Table 7-2 Business Transaction Use Case Description Correct Despatch Advice

uc CorrectDespatchAdvice	
Identifier	Correct Despatch Advice
Business Message Type	Despatch Advice
Description	Once the goods have left the ship from location and a change occurs in the delivery or the delivery is cancelled, the Ship To is informed.
Partner Types	Ship From, Ship To
Authorized Roles	Advice Corrector, Advice Correction Receiver
Legal Implications	
Initial/Terminal Events	<ul style="list-style-type: none"> Initial: the shipment details are changed or the shipment is cancelled. Terminal: the ShipTo has received the corrected despatch advice.
Scope	Information exchange between Ship From and Ship To concerning the despatch of goods.
Boundary	
Constraints	



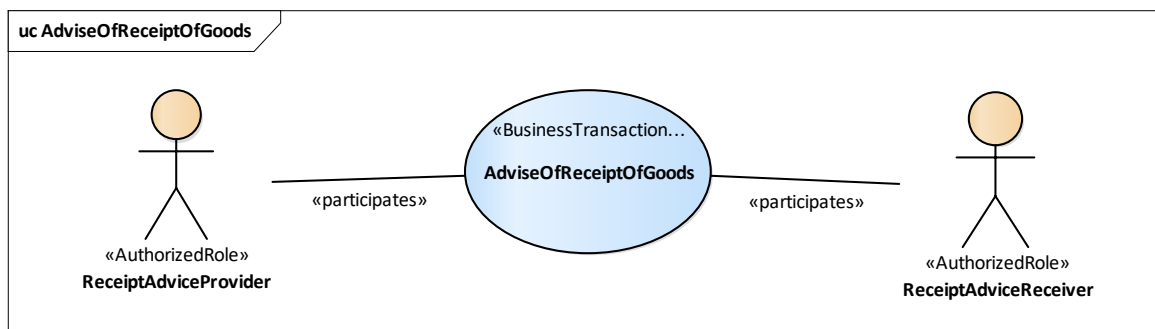
228
229

Figure 7-5 Activity Diagram Correct Despatch Advice

DRAFT

230

7.2.3 Advise Receipt (Business Transaction)



231

232

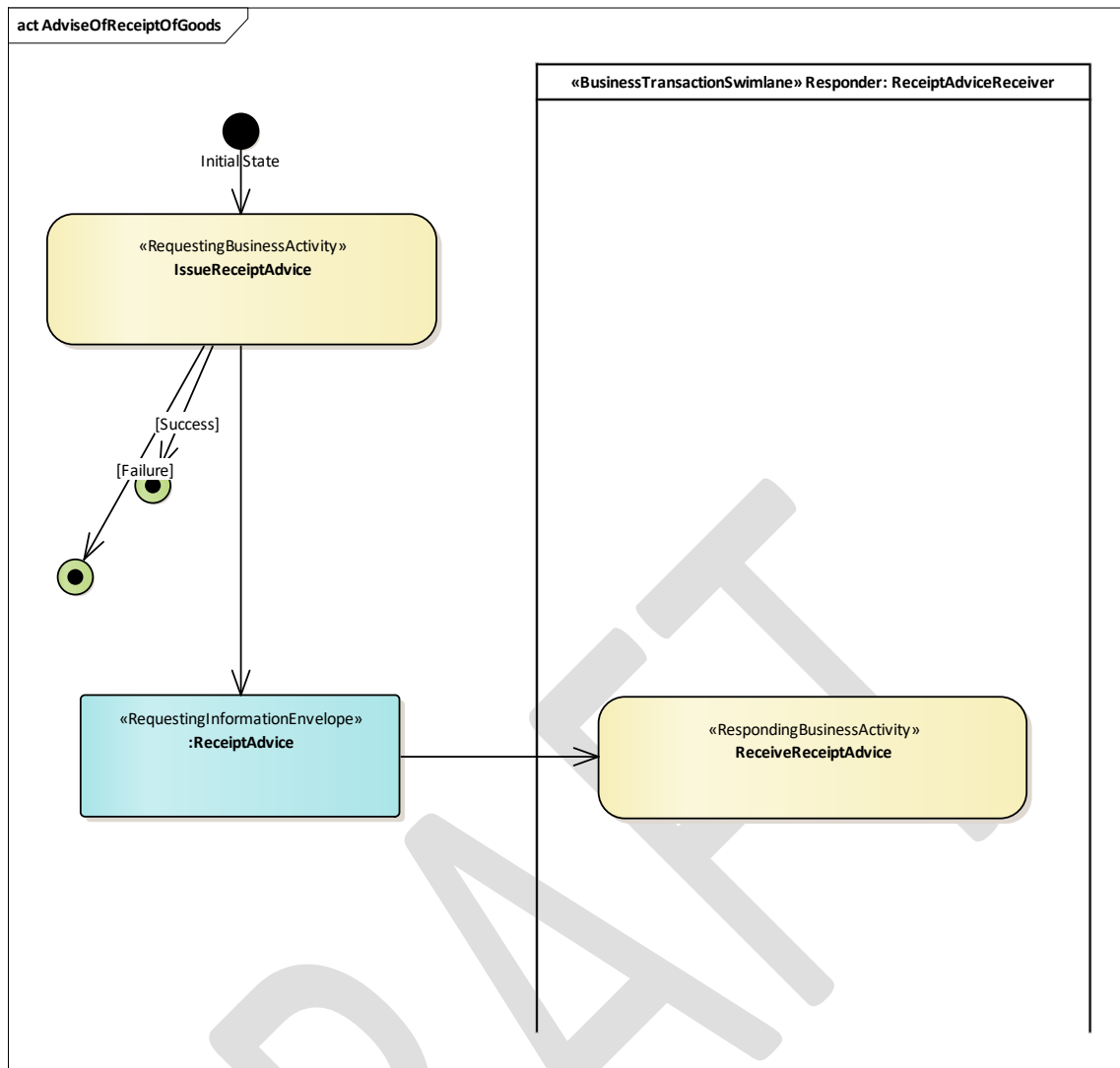
Figure 7-6 Business Transaction Use Case Diagram Advise Receipt

233

234

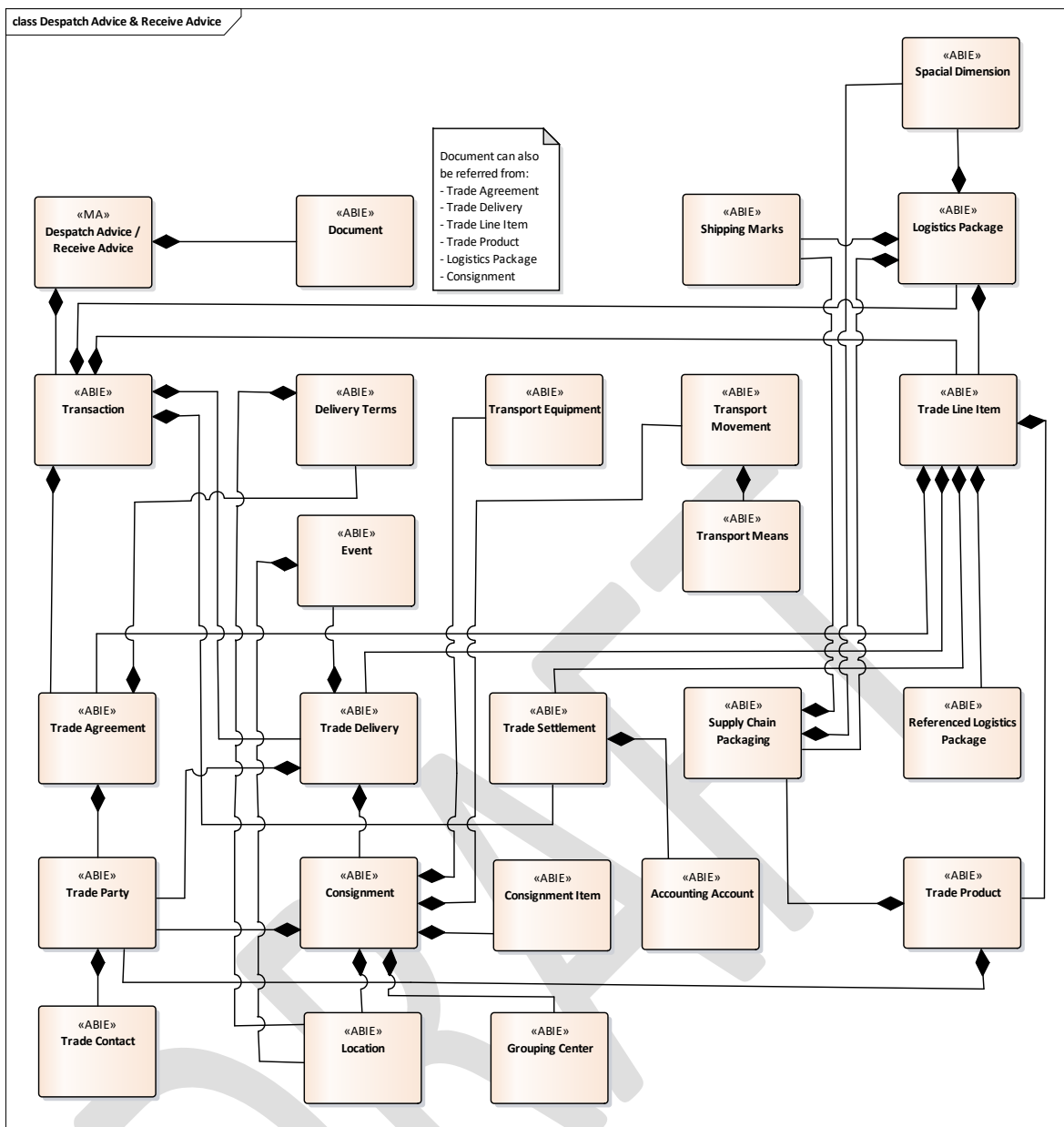
Table 7-3 Business Transaction Use Case Description Advise Receipt

Table 7-3 Business Transaction Use Case Description Advise Receipt	
Identifier	Advise Receipt
Business Message Type	Receiving Advice
Description	The Ship To prepares and sends a receiving advice to the Ship From to confirm reception of the goods and, if applicable, notify any discrepancies between the goods received and those announced in the despatch advice. Once the Ship From has received the receiving advice, the process ends.
Partner Types	Ship From, Ship To
Authorized Roles	Receipt Adviser, Receipt Receiver
Legal Implications	Ship To has taken responsibility for the custody of the goods. This may have effects on ownership or payment. The receiving advice document has an important legal value in the commercial process.
Initial/Terminal Events	<ul style="list-style-type: none"> • Initial: the goods have arrived at the Ship To. • Terminal: the Ship From has received the receiving advice.
Scope	To report on the goods received by the Ship To.
Boundary	
Constraints	



235
236

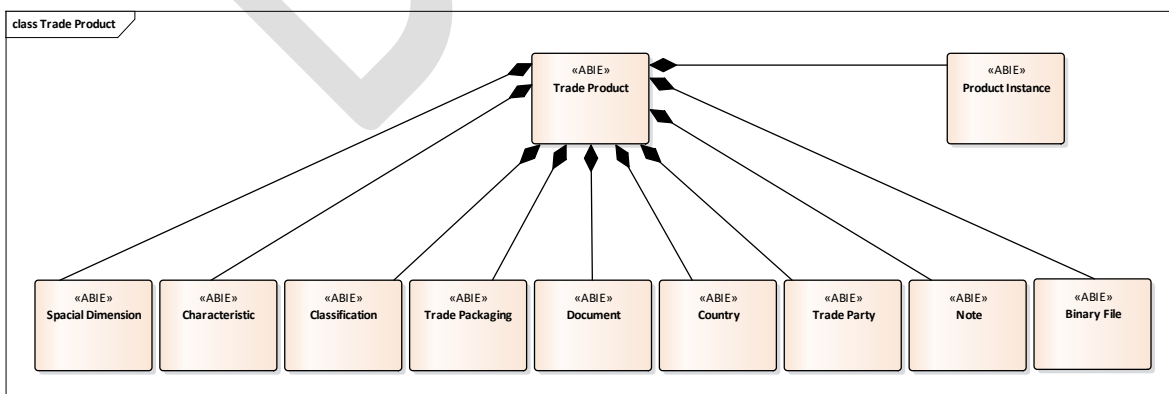
Figure 7-7 Activity Diagram Advise of Receipt of Goods



237
238
239
240

Figure 7-8 Business Entity Class Diagram – Despatch Advice & Receiving Advice

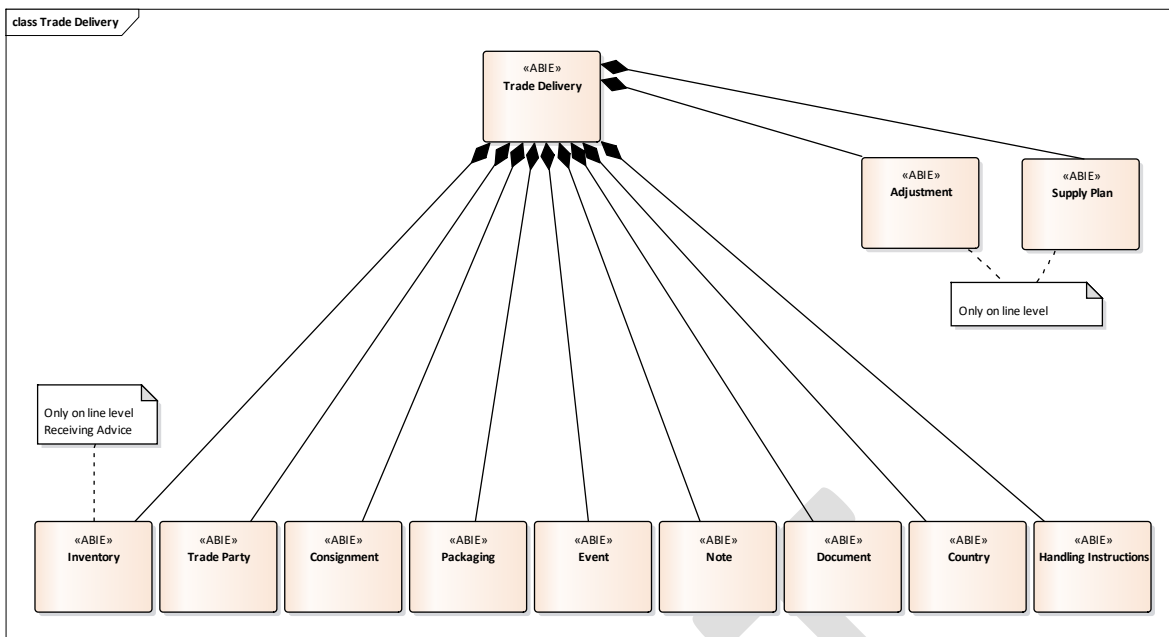
Note: For readability reasons, not all details of associated business information entities (ASBIEs) are listed. Details on ASBIEs can be found in the published CCL and messages.



241
242
243
244

Figure 7-9 Business Entity Class Diagram – Trade Product

Note: For readability reasons, not all details of associated business information entities (ASBIEs) are listed. Details on ASBIEs can be found in the published CCL and messages.



245
246

Figure 7-10 Business Entity Class Diagram – Trade Delivery

247 **Note:** For readability reasons, not all details of associated business information entities (ASBIEs)
248 are listed (such as Transport Dangerous Goods located within Consignment and Location within
249 Event. Details on ASBIEs can be found in the published CCL and messages.

DRAFT

250 **7.3 Business Documents**251 **7.3.1 Despatch Advice**

252 **Note:** For readability reasons, not all details of associated business information entities (ASBIEs)
 253 are listed. Details on ASBIEs can be found in the published CCL and messages.

Despatch Advice				
Header level				
Entity	Min	Max	Exchanged Document Context	
Att	0	1	Transaction ID	The transaction identifier.
Att	0	1	Process Transaction Date Time	The date time when the transaction was processed.
Att	0	1	Test Indicator	The indication of whether or not this exchanged document context is a test.
Assoc	0	unbounded	Scenario parameter	A scenario context parameter specified for the document context.
Assoc	0	unbounded	Business Process parameter	A BIM context parameter specified for the document context.
Assoc	0	unbounded	BIM parameter	A BIM context parameter specified for the document context.
Assoc	0	unbounded	Application parameter	An application context parameter specified for the document context.
Assoc	0	unbounded	Guideline parameter	A guideline context parameter specified for the document context.
Assoc	0	unbounded	Subset parameter	A subset context parameter specified for the document context.
Assoc	0	unbounded	Message standard parameter	A message context parameter specified for the document context.
Assoc	0	unbounded	User parameter	A user context parameter specified for the document context.
Entity	Min	Max	Exchanged Document	Data exchanged for a receiving advice between two or more parties in written, printed or electronic form.
Att	1	1	ID	The identifier.
Att	0	1	Version ID	The version identifier.
Att	1	1	Issue Date Time	The issuance date time.
Att	0	1	Submission Date Time	The formal submission date time.
Att	0	1	Revision Date Time	The revision date time.
Att	0	1	Type Code	The type code.
Att	0	1	Status Code	The status code.
Att	0	unbounded	Response Request Type Code	A response requested type code.
Att	0	unbounded	Purpose Code	A purpose code.
Att	0	1	Purpose Text	The purpose, expressed as text.
Att	0	1	Control Requirement Indicator	The indication that the document has control requirements.
Att	0	1	Copy Indicator	The indication that this document is a copy.
Att	0	unbounded	Name	A name for this document.
Assoc	0	1	Issuer	The party that issues this document.
Assoc	0	1	Sender	The party that sends this document.
Assoc	0	unbounded	Recipient	A party that receives this document.
Assoc	0	unbounded	Note	A note included.
Assoc	0	unbounded	Attached File	A binary file attached to this document.
Entity			Trade Transaction	Trade line items, trade agreement and trade delivery details included, at header level, in a Receiving Advice trade transaction.
Att	0	unbounded	ID	An identifier.
Att	0	unbounded	Shipment ID	A shipment identifier.
Att	0	1	Type Code	The transaction type code.
Att	0	1	Information	Information, expressed as text, for this supply chain trade transaction.

Despatch Advice				
Att	0	1	Issue Date Time	The date, time, date time or other date time value for the issuance of this exchanged document.
Assoc	1	1	Trade Agreement	The applicable trade agreement.
Assoc	1	1	Trade Settlement	The applicable trade settlement.
Assoc	1	1	Trade Delivery	The applicable trade delivery.
Assoc	0	unbounded	Included logistics packages.	Included logistics packages.
Entity			Trade Agreement (header level)	Contractual terms of a trade agreement for a receiving advice.
Assoc	0	1	Buyer	The buyer.
Assoc	0	1	Seller	The seller.
Assoc	0	1	Carrier	The carrier.
Assoc	0	1	Delivery Terms	The delivery terms.
Assoc	0	unbounded	Additional Document	An additional referenced document.
Assoc	0	1	Buyer Order Document	The referenced buyer order.
Assoc	0	1	Seller Order Document	The referenced seller order.
Assoc	0	unbounded	Contract Document	A referenced contract.
Assoc	0	1	Specified Procuring Project	The specified procuring project.
Assoc	0	unbounded	Relevant Party	A relevant party for this header trade agreement.
Entity			Trade Delivery (header level)	Shipping arrangements and movement of goods and or services including despatch and delivery pertaining to a receiving advice.
Att	0	1	ID	The identifier, at header level, for this trade delivery.
Att	0	1	Status Code	The status code.
Att	0	1	Final Delivery Indicator	The indication that the delivery is the final delivery.
Att	0	1	Over Delivery Allowed Indicator	The indication that over delivery is allowed.
Att	0	1	Partial Delivery Allowed Indicator	The indication that partial delivery is allowed.
Att	0	1	Fully Delivered Indicator	The indication that this delivery is fully delivered.
Att	0	1	Pick-Up Availability Date Time	The date when this delivery is available for pick-up.
Att	0	1	Ultimate Ship To Delivery Date Time	The date time when the delivery is delivered to the ultimate ship to party.
Att	0	1	Buyer Order Date Time	The date, time, date time, or other date time value, at header level, of the buyer order for this trade delivery.
Assoc	1	1	Ship From Party	The ship from party.
Assoc	1	1	Ship To Party	The ship to party.
Assoc	0	1	Ultimate Ship To Party	The ultimate ship to party.
Assoc	0	1	Final Destination Country	The country of final destination.
Assoc	0	unbounded	Additional Document	An additional referenced document.
Assoc	0	1	Delivery Note Document	The referenced delivery note.
Assoc	0	1	Despatch Advice Document	The referenced despatch advice.
Assoc	0	1	Packing List Document	The referenced packing list.
Assoc	0	1	Shipment Schedule Document	The referenced shipment schedule document.
Assoc	0	unbounded	Delivery Instructions	Delivery instructions.
Assoc	0	1	Actual Despatch Event	The actual despatch event.
Assoc	0	1	Actual Loading Event	The actual loading event.
Assoc	0	1	Handling Instructions	Handling Instructions
Assoc	0	1	Requested Delivery Event	The requested delivery event.
Assoc	0	1	Confirmed Release Event	The confirmed release event.
Assoc	0	1	Confirmed Despatch Event	The confirmed despatch event.
Assoc	0	1	Confirmed Pick-Up Event	The confirmed pick-up event.
Assoc	0	1	Planned Delivery Event	The planned delivery event.
Assoc	0	unbounded	Related Consignment	A related consignment.

Despatch Advice				
Assoc	0	unbounded	Included Supply Chain Packaging	Included Supply Chain Packaging
Assoc	0	unbounded	Information Note	An included information note.
Assoc	0	1	Planned Ship To Delivery Event	The planned ship to delivery event, at header level, for this trade delivery.
Assoc	0	1	Planned Pick-Up Event	The pick-up event, at header level, planned for this trade delivery.
Assoc	0	1	Requested Despatch Event	A despatch event, at header level, requested for this trade delivery.
Assoc	0	1	Estimated Delivery Event	An estimated delivery event for this header trade delivery.
Assoc	0	1	Delivery Party	A trade party acting as the delivery party for this header trade delivery.
Assoc	0	1	Freight Forwarder Party	A trade party acting as the freight forwarder party for this header trade delivery.
Entity			Trade Settlement (header level)	The trade settlement applicable to the trade transaction.
Att	0	1	Price Currency	The price currency.
Assoc	0	unbounded	Purchase Accounting Account	A purchase accounting account.
Assoc	0	unbounded	Sales Accounting Account	A sales accounting account.
Assoc	0	1	Applicable Tax	The applicable tax.
Assoc	0	1	Monetary Summation	The monetary summation.
Assoc	0	1	Payment Terms	The payment terms.
			Line level	
Entity			Trade Line Item	Information specific to a trade line item.
Att	0	unbounded	General Description	A textual description providing general information for this trade line item.
Assoc	1	1	Associated Document Line	The associated document line.
Assoc	0	1	Trade Agreement	The specified trade agreement.
Assoc	0	1	Trade Delivery	The specified trade delivery.
Assoc	0	1	Trade Settlement	The specified trade settlement.
Assoc	0	unbounded	Trade Product	A specified trade product.
Assoc	0	unbounded	Substituted Product	A referenced product substituted for this supply chain trade line item.
Assoc	0	unbounded	Referenced Logistics Package	A referenced logistics package.
Assoc	0	unbounded	Invoice Referenced Document	An invoice document associated to this supply chain trade line item.
Entity			Trade Agreement (line level)	Contractual terms of a supply chain trade agreement for a receiving advice line.
Assoc	0	1	Product End User	The party acting as the end user for the products.
Assoc	0	unbounded	Additional Document	An additional referenced document.
Assoc	0	1	Buyer Order Document	The referenced buyer order.
Assoc	0	1	Seller Order Document	The referenced seller order.
Assoc	0	unbounded	Contract Document	A referenced contract.
Assoc	0	unbounded	Promotional Deal Document	A referenced promotional deal.
Assoc	0	1	Net Price	The net price for the product.
Assoc	0	1	Program Mission Project	The program mission project.
Assoc	0	1	Manufacturer Party	A manufacturer party for this line trade agreement.
Assoc	0	unbounded	Relevant Party	A party relevant for this line trade agreement.
Entity			Trade Delivery (line level)	Shipping arrangements and movement of goods and or services including despatch and delivery pertaining to a receiving advice.
Att	0	1	Status Code	The status code.
Att	0	1	Final Delivery Indicator	The indication that this delivery is the final delivery.
Att	0	1	Over Delivery Allowed Indicator	The indication that over delivery is allowed.

Despatch Advice				
Att	0	1	Partial Delivery Allowed Indicator	The indication that partial delivery is allowed.
Att	0	1	Fully Delivered Indicator	The indication that this delivery is fully delivered.
Att	0	1	Quantity Variance Reason Code	To specify the coded reason of variances, such as item not ordered.
Att	0	unbounded	Quantity Variance Reason Text	To specify the reason, expressed as text, of variances.
Att	0	1	Ordered Quantity	The quantity ordered.
Att	0	1	Billed Quantity	The quantity billed.
Att	0	1	Despatched Quantity	The quantity despatched.
Att	0	1	Charge Free Quantity	The charge free quantity.
Att	0	1	Package Quantity	The number of packages.
Att	0	1	Requested Quantity	The requested quantity.
Att	0	1	Per Package Unit Quantity	The number of units per package.
Att	0	1	Product Unit Quantity	The number of product units.
Att	0	1	Remaining Requested Quantity	The remaining requested quantity.
Att	0	1	Individual Package Quantity	The quantity within the individual package.
Att	0	1	Chargeable Weight	The chargeable weight.
Att	0	1	Theoretical Weight	The theoretical weight.
Att	0	1	Gross Weight	The gross weight (mass).
Att	0	1	Net Weight	The net weight (mass).
Att	0	1	Gross Volume	The gross volume.
Att	0	1	Net Volume	The net volume.
Att	0	1	Pick-Up Availability Date Time	The date time for pick-up availability for this delivery.
Att	0	1	Ultimate Ship To Delivery Date Time	The date time for this delivery to the ultimate ship to party.
Att	0	1	Buyer Order Date Time	The date time when this delivery was ordered by the buyer.
Att	0	1	Rejected Quantity	The quantity, at line level, rejected for this trade delivery.
Att	0	1	Quantity Variation Type Code	The code specifying the type of quantity variation, at line level, for this trade delivery.
Assoc	0	1	Ship From Party	The ship from party.
Assoc	0	1	Ship To Party	The ship to party.
Assoc	0	1	Ultimate Ship To Party	The ultimate ship to party.
Assoc	0	1	Final Destination Country	The country of the final destination.
Assoc	0	1	Delivery Adjustment	The delivery adjustment.
Assoc	0	unbounded	Handling Instructions	Handling instructions.
Assoc	0	unbounded	Supply Plan	A supply plan.
Assoc	0	unbounded	Additional Document	An additional referenced document.
Assoc	0	1	Delivery Note Document	The referenced goods receipt note.
Assoc	0	1	Despatch Advice Document	The referenced despatch advice.
Assoc	0	1	Packing List Document	The referenced packing list.
Assoc	0	1	Shipment Schedule Document	The referenced shipment schedule document.
Assoc	0	1	Actual Despatch Event	The actual despatch event.
Assoc	0	1	Actual Pick-Up Event	The actual pick-up event.
Assoc	0	1	Actual Loading Event	The actual loading event.
Assoc	0	1	Requested Delivery Event	The requested delivery event.
Assoc	0	1	Confirmed Release Event	The release event, at line level, confirmed for this trade delivery.
Assoc	0	1	Confirmed Despatch Event	The confirmed despatch event.
Assoc	0	1	Confirmed Pick-up Event	The confirmed pick-up event.
Assoc	0	1	Planned Delivery Event	The planned delivery event.
Assoc	0	1	Planned Pick-Up Event	The pick-up event, at line level, planned for this trade delivery.

Despatch Advice				
Assoc	0	unbounded	Related Consignment	A related consignment.
Assoc	0	unbounded	Included Packaging	Included Packaging
Assoc	0	unbounded	Information Note	A note included.
Entity			Trade Settlement (line level)	The trade settlement applicable to the trade transaction.
Att	0	1	Price Currency	The price currency.
Att	0	unbounded	Payment Amount	A monetary value of a payment for this line trade settlement.
Att	0	1	Purchase Accounting Account	A purchase accounting account.
Assoc	0	unbounded	Sales Accounting Account	A sales accounting account.
Assoc	0	1	Applicable Tax	The applicable tax.
Assoc	0	1	Monetary Summation	The monetary summation.
Assoc	0	1	Payment Terms	The payment terms.
End				

DRAFT

254

7.3.2 Receiving Advice

255

Note: For readability reasons, not all details of associated business information entities (ASBIEs) are listed. Details on ASBIEs can be found in the published CCL and messages.

256

Receiving Advice				
Header level				
Entity	Min	Max	Exchanged Document Context	
Att	0	1	Transaction ID	The transaction identifier.
Att	0	1	Process Transaction Date Time	The date time when the transaction was processed.
Att	0	1	Test Indicator	The indication of whether or not this exchanged document context is a test.
Assoc	0	unbounded	Scenario parameter	A scenario context parameter specified for the document context.
Assoc	0	unbounded	Business Process parameter	A BIM context parameter specified for the document context.
Assoc	0	unbounded	BIM parameter	A BIM context parameter specified for the document context.
Assoc	0	unbounded	Application parameter	An application context parameter specified for the document context.
Assoc	0	unbounded	Guideline parameter	A guideline context parameter specified for the document context.
Assoc	0	unbounded	Subset parameter	A subset context parameter specified for the document context.
Assoc	0	unbounded	Message standard parameter	A message context parameter specified for the document context.
Assoc	0	unbounded	User parameter	A user context parameter specified for the document context.
Entity	Min	Max	Exchanged Document	Data exchanged for a receiving advice between two or more parties in written, printed or electronic form.
Att	1	1	ID	The identifier.
Att	0	1	Version ID	The version identifier.
Att	1	1	Issue Date Time	The issuance date time.
Att	0	1	Submission Date Time	The formal submission date time.
Att	0	1	Revision Date Time	The revision date time.
Att	0	1	Type Code	The type code.
Att	0	1	Status Code	The status code.
Att	0	unbounded	Response Request Type Code	A response requested type code.
Att	0	unbounded	Purpose Code	A purpose code.
Att	0	1	Purpose Text	The purpose, expressed as text.
Att	0	1	Control Requirement Indicator	The indication that the document has control requirements.
Att	0	1	Copy Indicator	The indication that this document is a copy.
Att	0	unbounded	Name	A name for this document.
Assoc	0	1	Issuer	The party that issues this document.
Assoc	0	1	Sender	The party that sends this document.
Assoc	0	unbounded	Recipient	A party that receives this document.
Assoc	0	unbounded	Note	A note included.
Assoc	0	unbounded	Attached File	A binary file attached to this document.
Entity			Trade Transaction	Trade line items, trade agreement and trade delivery details included, at header level, in a Receiving Advice trade transaction.
Att	0	unbounded	ID	An identifier.
Att	0	unbounded	Shipment ID	A shipment identifier.
Att	0	1	Type Code	The transaction type code.
Assoc	1	1	Trade Agreement	The applicable trade agreement.
Assoc	1	1	Trade Settlement	The applicable trade settlement.
Assoc	1	1	Trade Delivery	The applicable trade delivery.
Assoc	0	unbounded	Included logistics packages.	Included logistics packages.

Receiving Advice				
Assoc	0	unbounded	Included Trade Line Item	A trade line item included in this supply chain trade transaction.
Assoc	0	unbounded	Logistics Package	A logistics package specified for this supply chain trade transaction.
Entity			Trade Agreement (header level)	Contractual terms of a trade agreement for a receiving advice.
Assoc	0	1	Buyer	The buyer.
Assoc	0	1	Seller	The seller.
Assoc	0	1	Carrier	The carrier.
Assoc	0	1	Delivery Terms	The delivery terms.
Assoc	0	unbounded	Additional Document	An additional referenced document.
Assoc	0	1	Buyer Order Document	The referenced buyer order.
Assoc	0	1	Seller Order Document	The referenced seller order.
Assoc	0	unbounded	Contract Document	A referenced contract.
Assoc	0	1	Specified Procuring Project	The specified procuring project.
Assoc	0	unbounded	Relevant Party	A relevant party for this header trade agreement.
Entity			Trade Delivery (header level)	Shipping arrangements and movement of goods and or services including despatch and delivery pertaining to a receiving advice.
Att	0	1	ID	The identifier, at header level, for this trade delivery.
Att	0	1	Status Code	The status code.
Att	0	1	Physical State Type Code	The code specifying the type of physical state of the delivery, such as for products, package, equipment.
Att	0	unbounded	Physical State Type Text	A description specifying the type of physical state of the delivery.
Att	0	1	Physical Description Code	The code specifying the physical state of the delivery.
Att	0	unbounded	Physical State Text	A description specifying the physical state of the delivery.
Att	0	1	Final Delivery Indicator	The indication that the delivery is the final delivery.
Att	0	1	Over Delivery Allowed Indicator	The indication that over delivery is allowed.
Att	0	1	Partial Delivery Allowed Indicator	The indication that partial delivery is allowed.
Att	0	1	Fully Delivered Indicator	The indication that this delivery is fully delivered.
Att	0	1	Pick-Up Availability Date Time	The date when this delivery is available for pick-up.
Att	0	1	Ultimate Ship To Delivery Date Time	The date time when the delivery is delivered to the ultimate ship to party.
Att	0	1	Goods Ownership Change. Date Time	The date time when the goods of this trade delivery changed from ownership.
Assoc	1	1	Ship From Party	The ship from party.
Assoc	1	1	Ship To Party	The ship to party.
Assoc	0	1	Ultimate Ship To Party	The ultimate ship to party.
Assoc	0	unbounded	Disposal Party	A disposal party.
Assoc	0	unbounded	Inventory Manager	An inventory manager party.
Assoc	0	1	Final Destination Country	The country of final destination.
Assoc	0	unbounded	Additional Document	An additional referenced document.
Assoc	0	1	Delivery Note Document	The referenced delivery note.
Assoc	0	1	Despatch Advice Document	The referenced despatch advice.
Assoc	0	1	Packing List Document	The referenced packing list.
Assoc	0	1	Receiving Advice Document	The referenced receiving advice.
Assoc	0	1	Shipment Schedule Document	The referenced shipment schedule document.
Assoc	0	unbounded	Delivery Instructions	Delivery instructions.
Assoc	0	1	Actual Despatch Event	The actual despatch event.

Receiving Advice				
Assoc	0	1	Actual Receipt Event	The actual receipt event.
Assoc	0	1	Actual Unloading Event	The actual unloading event.
Assoc	0	1	Actual Pick-Up Event	The actual Pick-Up event.
Assoc	0	1	Handling Instructions	Handling Instructions
Assoc	0	1	Requested Delivery Event	The requested delivery event.
Assoc	0	1	Confirmed Release Event	The confirmed release event.
Assoc	0	1	Confirmed Despatch Event	The confirmed despatch event.
Assoc	0	1	Confirmed Pick-Up Event	The confirmed pick-up event.
Assoc	0	1	Planned Delivery Event	The planned delivery event.
Assoc	0	unbounded	Related Consignment	A related consignment.
Assoc	0	unbounded	Included Supply Chain Packaging	Included Supply Chain Packaging
Assoc	0	unbounded	Information Note	An included information note.
Entity			Trade Settlement (header level)	The trade settlement applicable to the trade transaction.
Att	0	1	Price Currency	The price currency.
Assoc	0	unbounded	Purchase Accounting Account	A purchase accounting account.
Assoc	0	unbounded	Sales Accounting Account	A sales accounting account.
Assoc	0	1	Applicable Tax	The applicable tax.
Assoc	0	1	Monetary Summation	The monetary summation.
Assoc	0	1	Payment Terms	The payment terms.
Entity			Logistics Package	A logistics package specified for this supply chain trade transaction.
Att	0	1	Level Code	The code specifying the level of this logistics package.
Assoc	0	unbounded	Trade Line Item	A supply chain trade line item included in this logistics package.
Entity			Trade Line Item	A supply chain trade line item included in this logistics package.
Assoc	0	1	Line Trade Delivery	The line trade delivery specified for this supply chain trade line item.
Assoc	0	unbounded	Included Trade Line Item	A trade line item included in this supply chain trade transaction.
Assoc	0	1	Trade Product	A product specified for this supply chain trade line item.
Att	0	1	Buyer Assigned ID	The unique buyer assigned identifier for this trade product.
Att	0	unbounded	Description	A textual description for this trade product.
Att	0	1	Product Group ID	A unique identifier for a product group for this trade product.
Att	0	1	Customer Assigned ID	A unique customer assigned identifier for this trade product.
Att	0	1	Colour Code	The code specifying the colour for this trade product.
Assoc	0	unbounded	Characteristic	A characteristic applicable to this trade product.
Assoc	0	1	Manufacturer	A manufacturer party for this trade product.
Assoc	0	unbounded	Additional Document	An additional referenced document for this trade product, such as a manual or a certificate.
Assoc	0	unbounded	Applicable Logistics Packaging	Packaging applicable for use with this product.
Entity			Trade Agreement (line level)	Contractual terms of a supply chain trade agreement for a receiving advice line.
Assoc	0	1	Product End User	The party acting as the end user for the products.
Assoc	0	unbounded	Additional Document	An additional referenced document.
Assoc	0	1	Buyer Order Document	The referenced buyer order.

Receiving Advice				
Assoc	0	1	Seller Order Document	The referenced seller order.
Assoc	0	unbounded	Contract Document	A referenced contract.
Assoc	0	unbounded	Promotional Deal Document	A referenced promotional deal.
Assoc	0	1	Net Price	The net price for the product.
Assoc	0	1	Program Mission Project	The program mission project.
Assoc	0	1	Manufacturer Party	A manufacturer party for this line trade agreement.
Entity			Trade Delivery (line level)	Shipping arrangements and movement of goods and or services including despatch and delivery pertaining to a receiving advice.
Att	0	1	Status Code	The status code.
Att	0	1	Physical State Type Code	The code specifying the type of physical state, such as for products, package, equipment.
Att	0	unbounded	Physical State Type Text	A description specifying the type of physical state.
Att	0	1	Physical Description Code	The code specifying the physical state.
Att	0	unbounded	Physical State Text	A description specifying the physical state.
Att	0	1	Final Delivery Indicator	The indication that this delivery is the final delivery.
Att	0	1	Over Delivery Allowed Indicator	The indication that over delivery is allowed.
Att	0	1	Partial Delivery Allowed Indicator	The indication that partial delivery is allowed.
Att	0	1	Fully Delivered Indicator	The indication that this delivery is fully delivered.
Att	0	1	Quantity Variance Reason Code	To specify the coded reason of variances, such as item not ordered.
Att	0	1	Quantity Variation Type Code	The code specifying the type of quantity variation, at line level, for this line trade delivery.
Att	0	unbounded	Quantity Variance Reason Text	To specify the reason, expressed as text, of variances.
Att	0	1	Quantity Discrepancy Nature Code	The code specifying the quantity discrepancy nature, such as goods delivered damaged.
Att	0	1	Ordered Quantity	The quantity ordered.
Att	0	1	Billed Quantity	The quantity billed.
Att	0	1	Despatched Quantity	The quantity despatched.
Att	0	1	Charge Free Quantity	The charge free quantity.
Att	0	1	Package Quantity	The number of packages.
Att	0	1	Requested Quantity	The requested quantity.
Att	0	1	Per Package Unit Quantity	The number of units per package.
Att	0	1	Product Unit Quantity	The number of product units.
Att	0	1	Remaining Requested Quantity	The remaining requested quantity.
Att	0	1	Received Quantity	The received quantity.
Att	0	1	Agreed Quantity	The quantity agreed.
Att	0	1	Rejected Quantity	The quantity rejected.
Att	0	1	Returned Quantity	The quantity returned.
Att	0	1	Destroyed Quantity	The quantity destroyed.
Att	0	1	Individual Package Quantity	The quantity within the individual package.
Att	0	1	Chargeable Weight	The chargeable weight.
Att	0	1	Theoretical Weight	The theoretical weight.
Att	0	1	Gross Weight	The gross weight (mass).
Att	0	1	Net Weight	The net weight (mass).
Att	0	1	Gross Volume	The gross volume.
Att	0	1	Net Volume	The net volume.

Receiving Advice				
Att	0	1	Ultimate Ship To Delivery Date Time	The date time for this delivery to the ultimate ship to party.
Att	0	1	Pick-Up Availability Date Time	The date time for pick-up availability for this delivery.
Att	0	1	Buyer Order Date Time	The date time when this delivery was ordered by the buyer.
Att	0	1	Goods Ownership Change. Date Time	The date time when the goods of this trade delivery changed from ownership.
Assoc	0	1	Ship From Party	The ship from party.
Assoc	0	1	Ship To Party	The ship to party.
Assoc	0	1	Ultimate Ship To Party	The ultimate ship to party.
Assoc	0	unbounded	Disposal Party	A disposal party.
Assoc	0	unbounded	Inventory Manager	An inventory manager party.
Assoc	0	1	Final Destination Country	The country of the final destination.
Assoc	0	1	Delivery Adjustment	The delivery adjustment.
Assoc	0	unbounded	Handling Instructions	Handling instructions.
Assoc	0	unbounded	Supply Plan	A supply plan.
Assoc	0	unbounded	Additional Document	An additional referenced document.
Assoc	0	1	Delivery Note Document	The referenced goods receipt note.
Assoc	0	1	Goods Receipt Note Document	The referenced delivery note.
Assoc	0	1	Despatch Advice Document	The referenced despatch advice.
Assoc	0	1	Packing List Document	The referenced packing list.
Assoc	0	unbounded	Receiving Advice Document	A referenced receiving advice.
Assoc	0	1	Shipment Schedule Document	The referenced shipment schedule document.
Assoc	0	1	Actual Despatch Event	The actual despatch event.
Assoc	0	1	Actual Pick-Up Event	The actual pick-up event.
Assoc	0	1	Actual Receipt Event	The actual receipt event.
Assoc	0	1	Actual Unloading Event	The actual unloading event.
Assoc	0	1	Requested Delivery Event	The requested delivery event.
Assoc	0	1	Confirmed Despatch Event	The confirmed despatch event.
Assoc	0	1	Confirmed Pick-up Event	The confirmed pick-up event.
Assoc	0	1	Planned Delivery Event	The planned delivery event.
Assoc	0	unbounded	Available Inventory	Available Inventory.
Assoc	0	unbounded	Customer Inventory	Supply chain customer inventory.
Assoc	0	unbounded	Related Consignment	A related consignment.
Assoc	0	unbounded	Included Packaging	Included Packaging
Assoc	0	unbounded	Information Note	A note included.
End				

257

258 **7.3.3 Business Rules**

259 Not applicable

260 **7.3.4 Definition of Terms**261 Regarding the Definition of Terms refer to TBG1 Common Supply Chain BRS and published
262 CCL.

263