



ASYCUDA
Automated System for Customs Data



@CITES
POWERED BY ASYCUDA



Mr José Luis Ardila Giraldo, October 2022

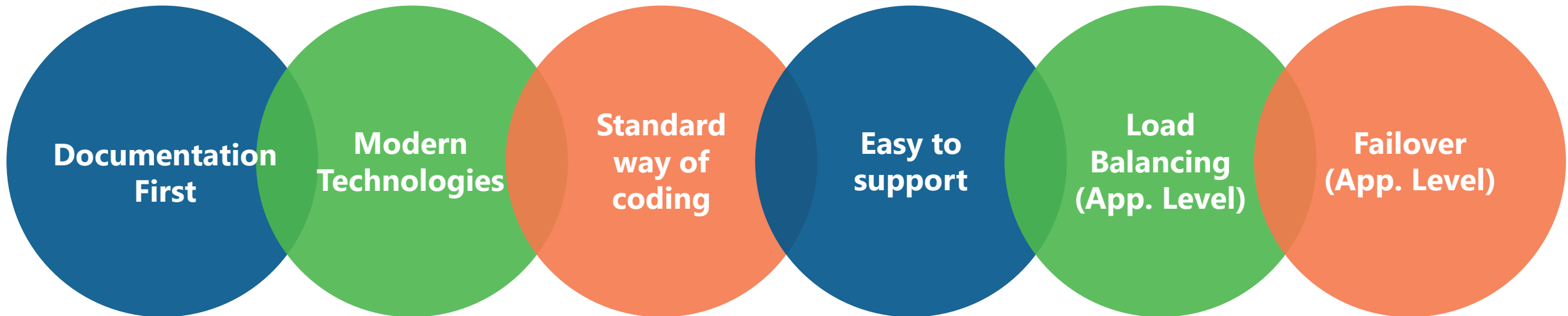
EPIX Integration

eCITES – Base Solution

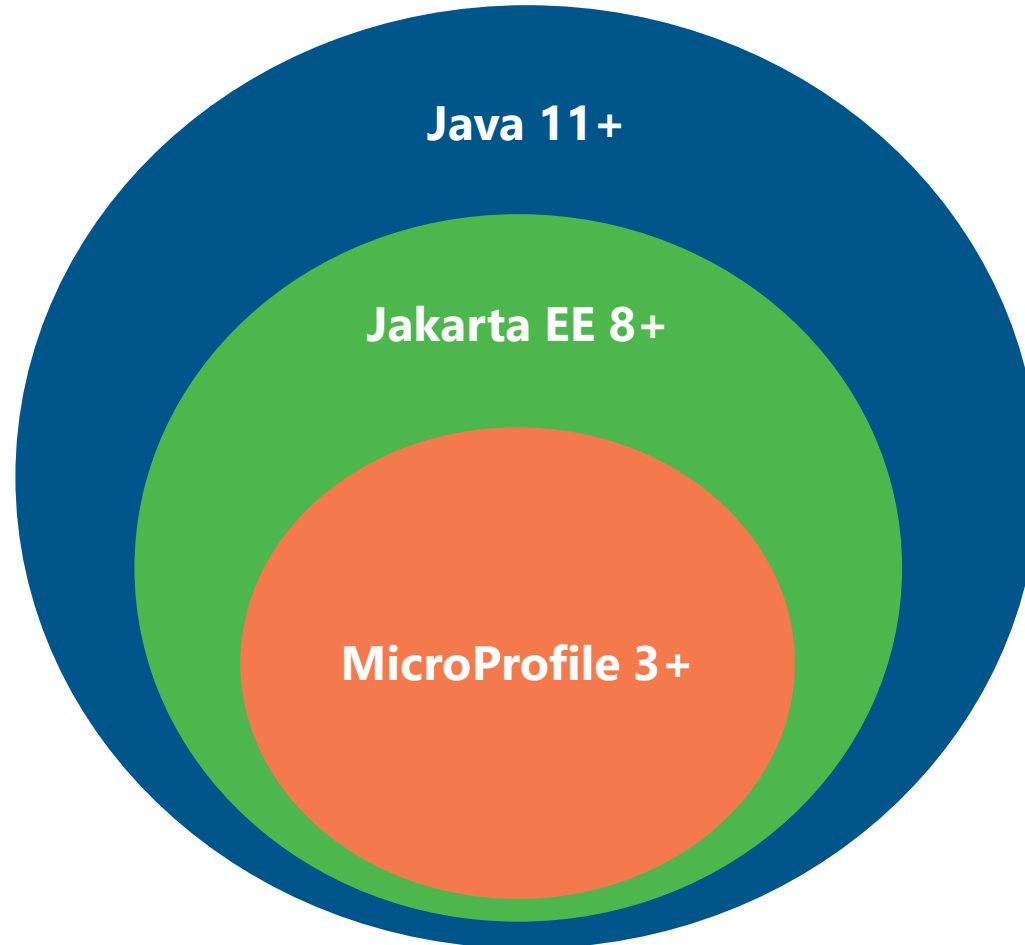
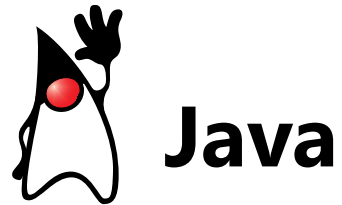
@CITES

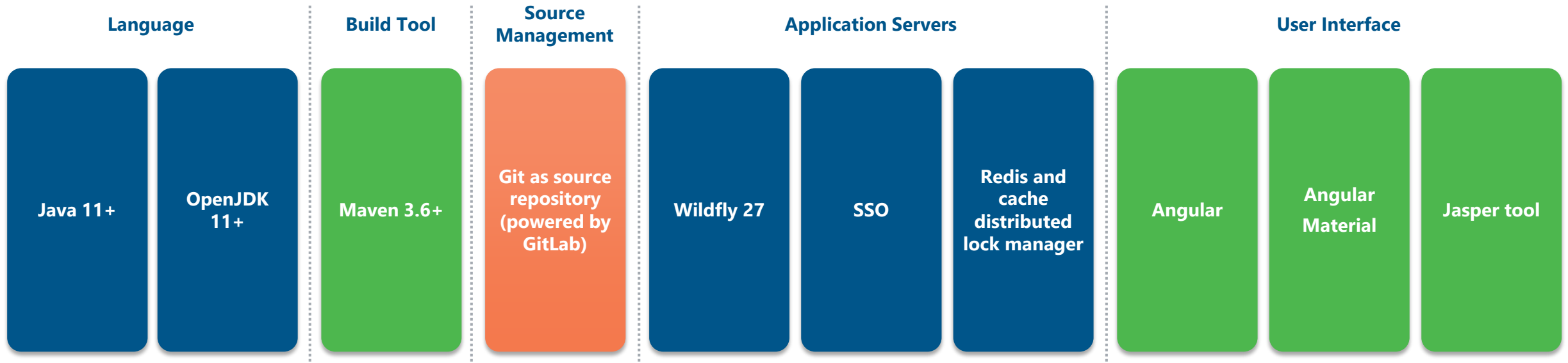
- 1 Features
- 2 Technologies
- 3 eCITES base solution
- 4 EPIX
- 5 Technical documentation
- 6 How it works
- 7 Current status and next steps
- 8 System demonstration





Mainly based on:







Database
Server

PostgreSQL



Database
Access

JPA
(e.g. Hibernate)



Application
Server

WildFly 27+

Java EE 8

OpenJDK 11

JWT

Auth0

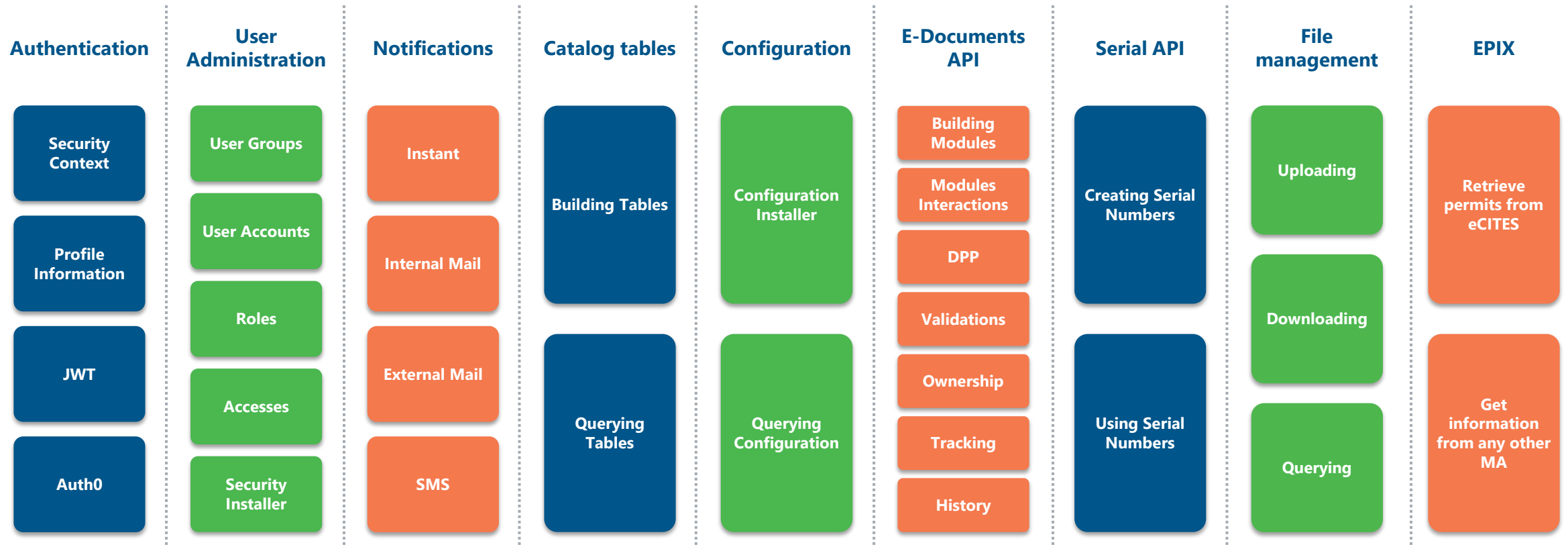


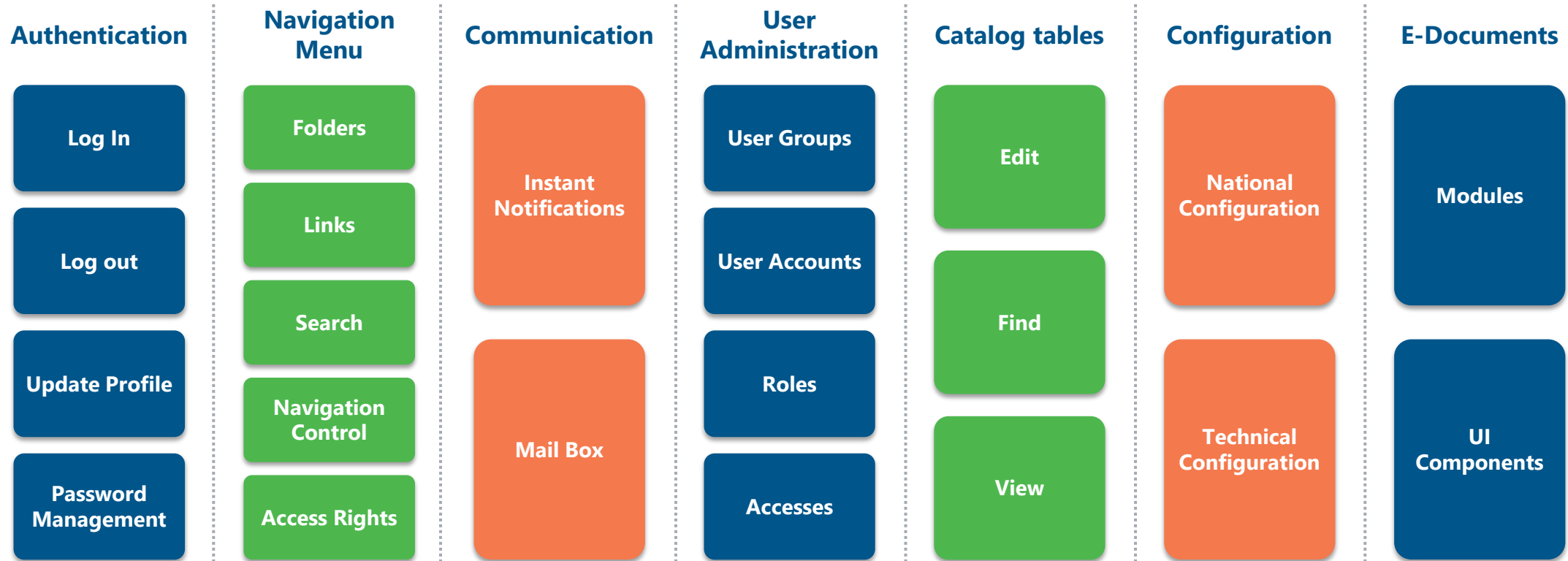
Front-end

Angular 8

HTML 5

SCSS





Back-end

SSO (WAR)

Core Framework (WAR)

Admin Framework (WAR)

Cites module (WAR)

Accounting module (WAR)

Module # (WAR)

Front-end

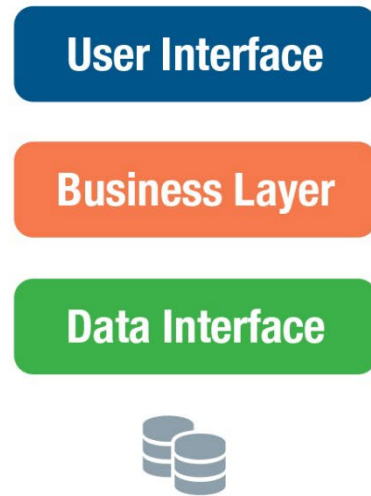
SSO

Web Client

- Core Framework
 - Module #1
 - Module #2
 - Module #3
 - Module #4

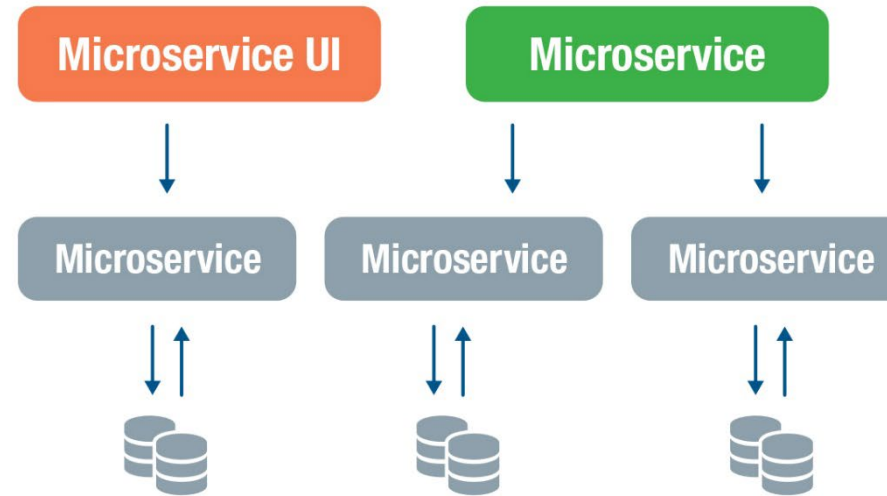


Monolith Architecture



Monolith: Single database

Microservice Architecture



Microservice: Application database

“The microservice architectural style is an approach to developing a single application as a suite of small services, each running in its own process and communicating with lightweight mechanisms, often an HTTP resource API.”

Martin Fowler



MicroProfile 3.3



- Updated
- No change from last release (MicroProfile 3.2)

Eclipse MicroProfile aims to deliver a growing set of APIs for Java applications composed of multiple microservices. The project has been gaining a lot of attention recently, with a growing list of corporate supporters that also includes Oracle and IBM. There are many servers and frameworks providing the API and that means you can choose the best tool to run your microservices while keeping the same familiar API and behavior.



- ▶ This module is responsible for User Administration, Authentication, and Authorization
- ▶ It is deployed as a war file



- ▶ Refers to the management of catalog's table (reference table)
- ▶ It handles services to query and modify catalog's table and guarantee time constraints between records
- ▶ Developers will define the domain model of the table and the module will provide the API expected functionality
- ▶ It is deployed as a war file



- ▶ Manage eDocuments' life cycle and their specifications
- ▶ Defines status, operations and workflow
- ▶ Manage internal notifications as part of eDocs interactions
- ▶ It is deployed as a war file



- ▶ This module is the core of the eCITES permitting system
- ▶ It controls the workflow of any permit and/or certificate created by a trader, notify users about pending tasks, change the status of a document depending on operations performed on the system, and present information based on user roles
- ▶ It is deployed as a war file



- ▶ This module handle the payment process defined by the MA. It supports both types: manual (over the counter), and online (payment gateway)
- ▶ Also includes a prepayment account functionality
- ▶ Allows payment of multiple permits/certificates at once
- ▶ It is deployed as a war file



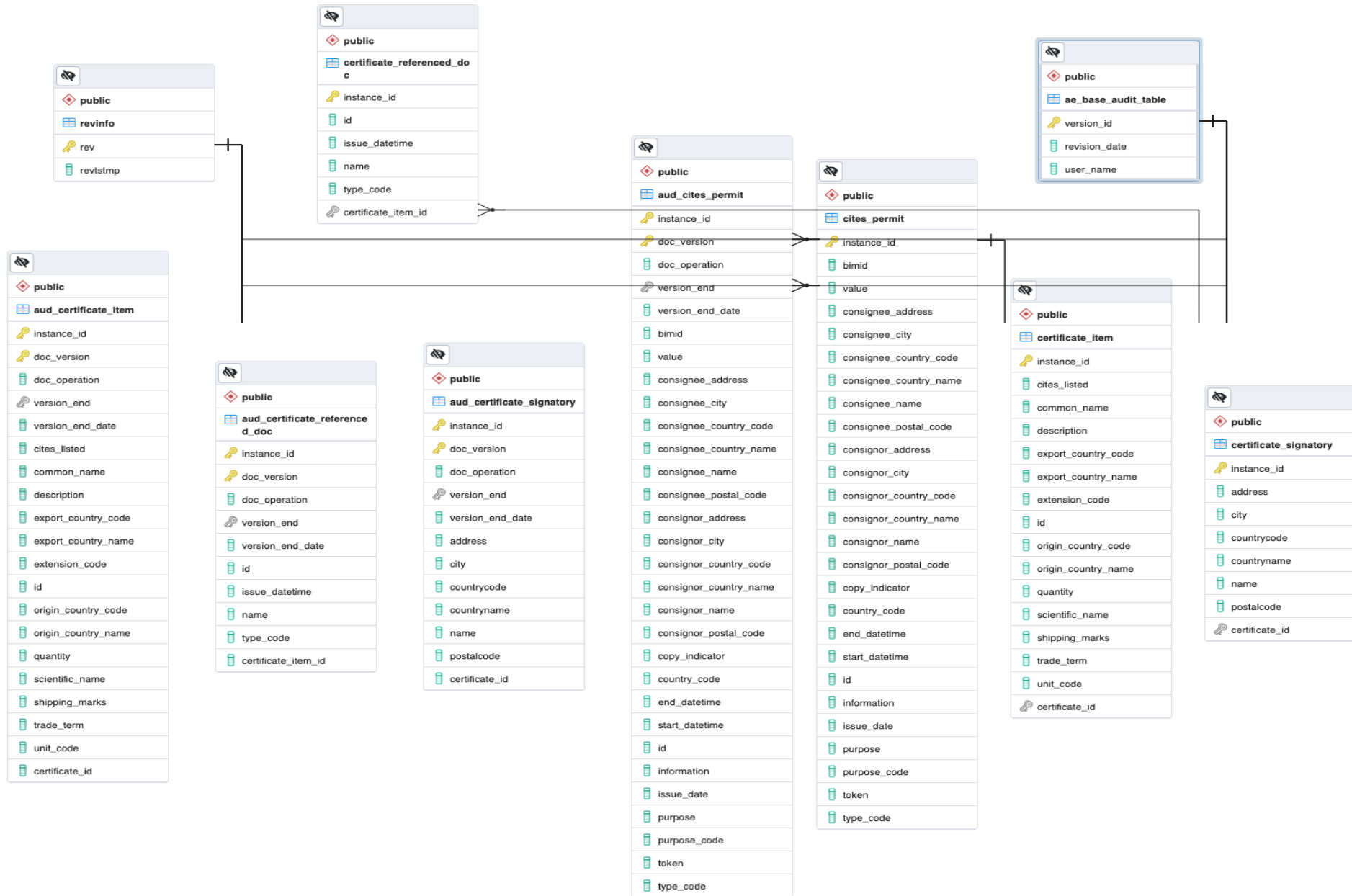
- ▶ Set of commons libraries that is used by the kernel such as: logging, validation, search definitions, etc.
- ▶ It is deployed as a jar file

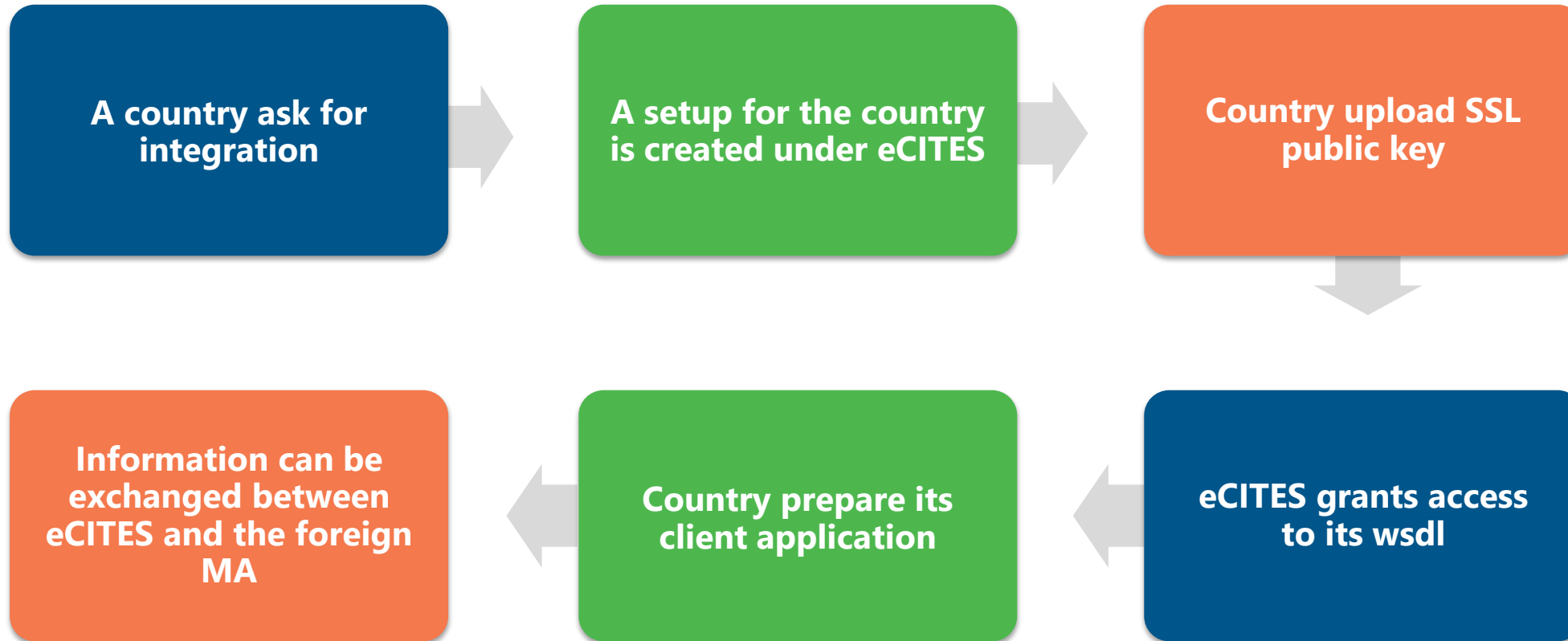


- ▶ Based on SOAP protocol
- ▶ XML Schema based on the ePermit Core Component Data Model V2.0 of UN/CEFACT
- ▶ It is built on top of Jakarta EE specification
- ▶ It is an independent module that can be plugged in any Java compatible AS
- ▶ An extension for RESTful web services is available in case this technology would be adopted in the future
- ▶ The configuration is based on microprofile specification



EPIX integration – ERD





- ▶ The backend is fully operational and integrated with eCITES permitting management module
- ▶ Technical documentation is in progress. It will be released in web-based format as well
- ▶ Client integration is in progress
- ▶ Dashboard with usability and historical data
- ▶ Unitary tests (performance and security) are being conducted by the UNCTAD team



- ▶ The EPIX client component will be ready for testing before the CoP19
- ▶ Integration tests with Swiss Management Authority would start in November, according to the team availability







THANK YOU!

QUESTIONS & ANSWERS



📍 CITES Secretariat, Palais des Nations CH-1211, Geneva 10, Switzerland

🐦 @cites

✉ info@cites.org

🌐 cites.org



UNITED NATIONS
UNCTAD

ASYCUDA
Automated System for Customs Data

📍 Palais des Nations CH-1211 Geneva 10, Switzerland

🐦 @asycudaprogram

✉ ecites@asycuda.org

🌐 asycuda.org