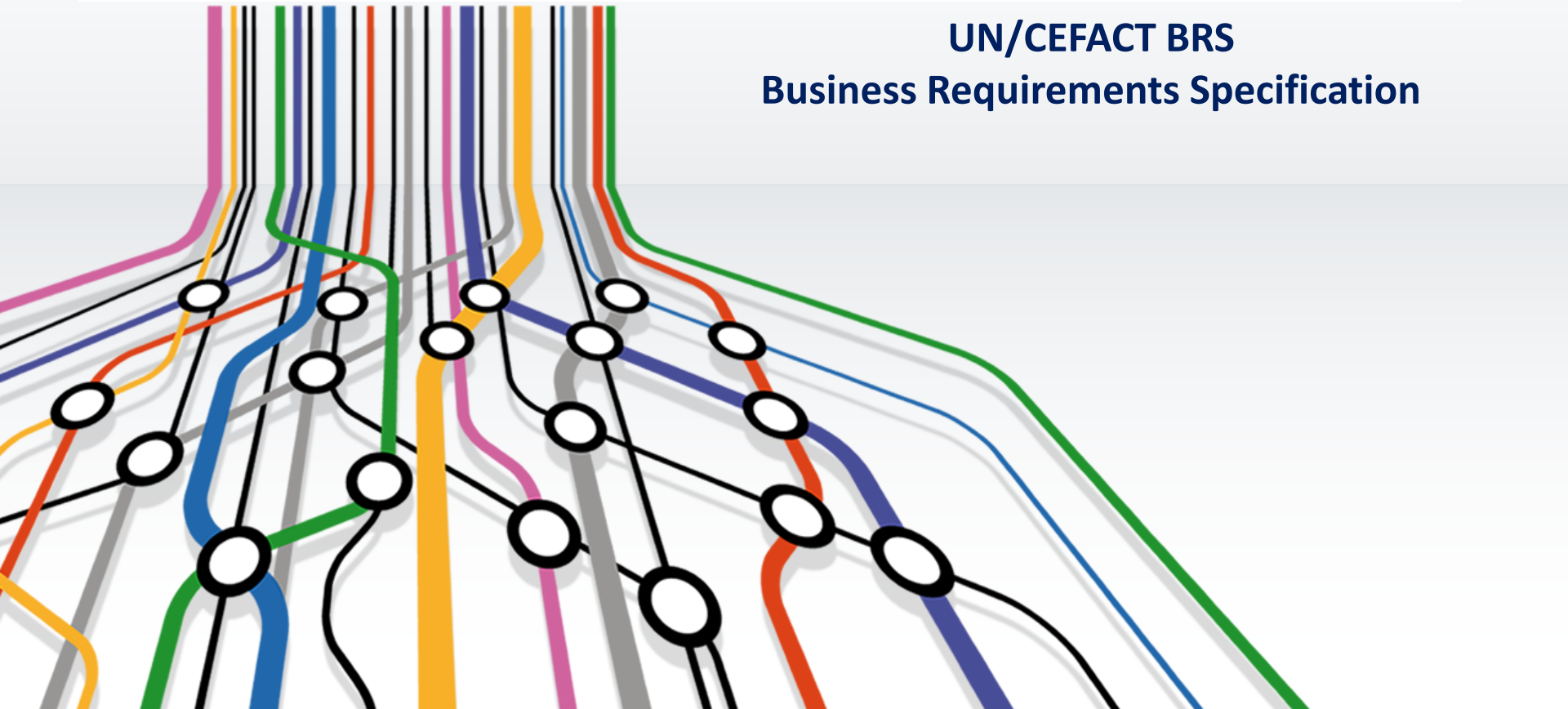


Gerhard Heemsker, Data Modeller, UN/CEFACT project expert

28 | 04 | 2020, WebEx-teleconference

UN/CEFACT Standards

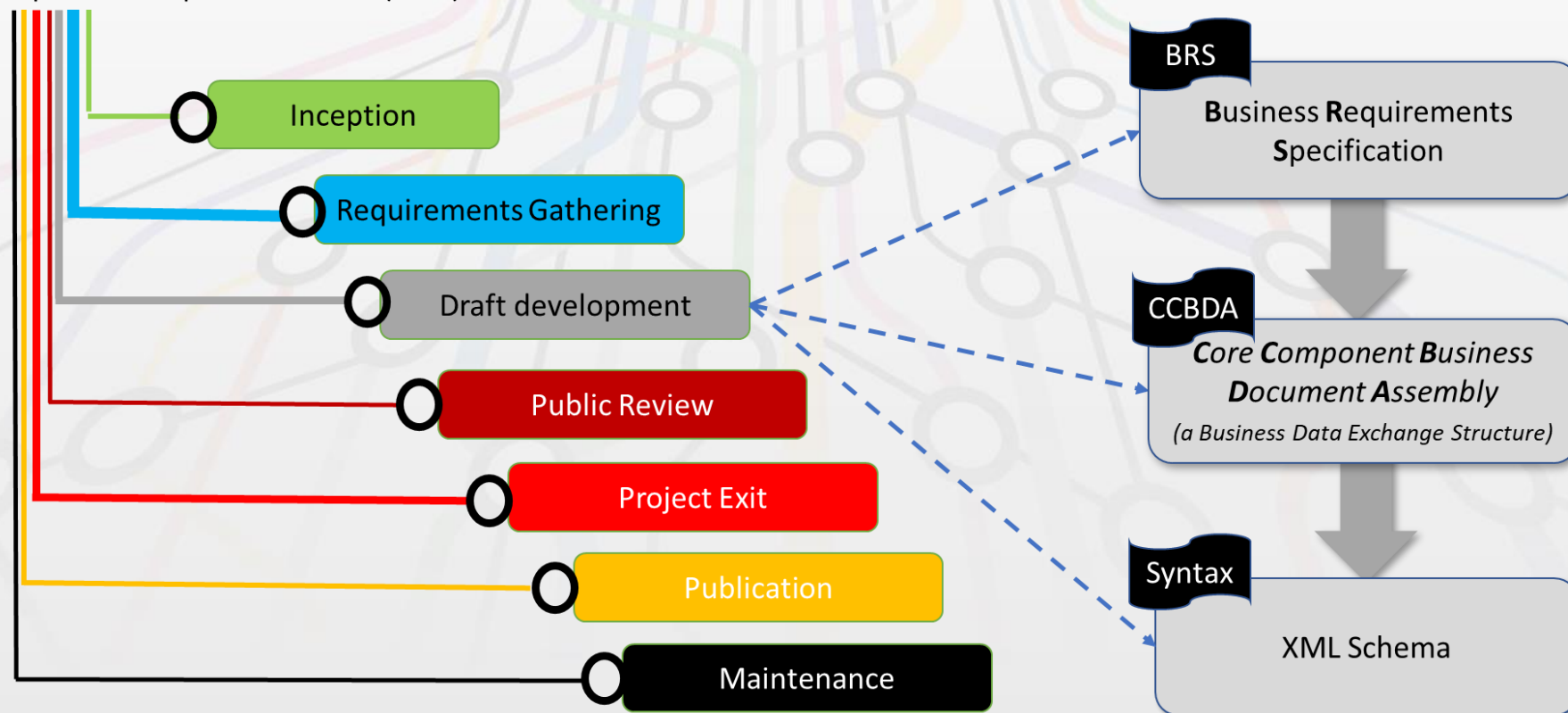
UN/CEFACT BRS
Business Requirements Specification



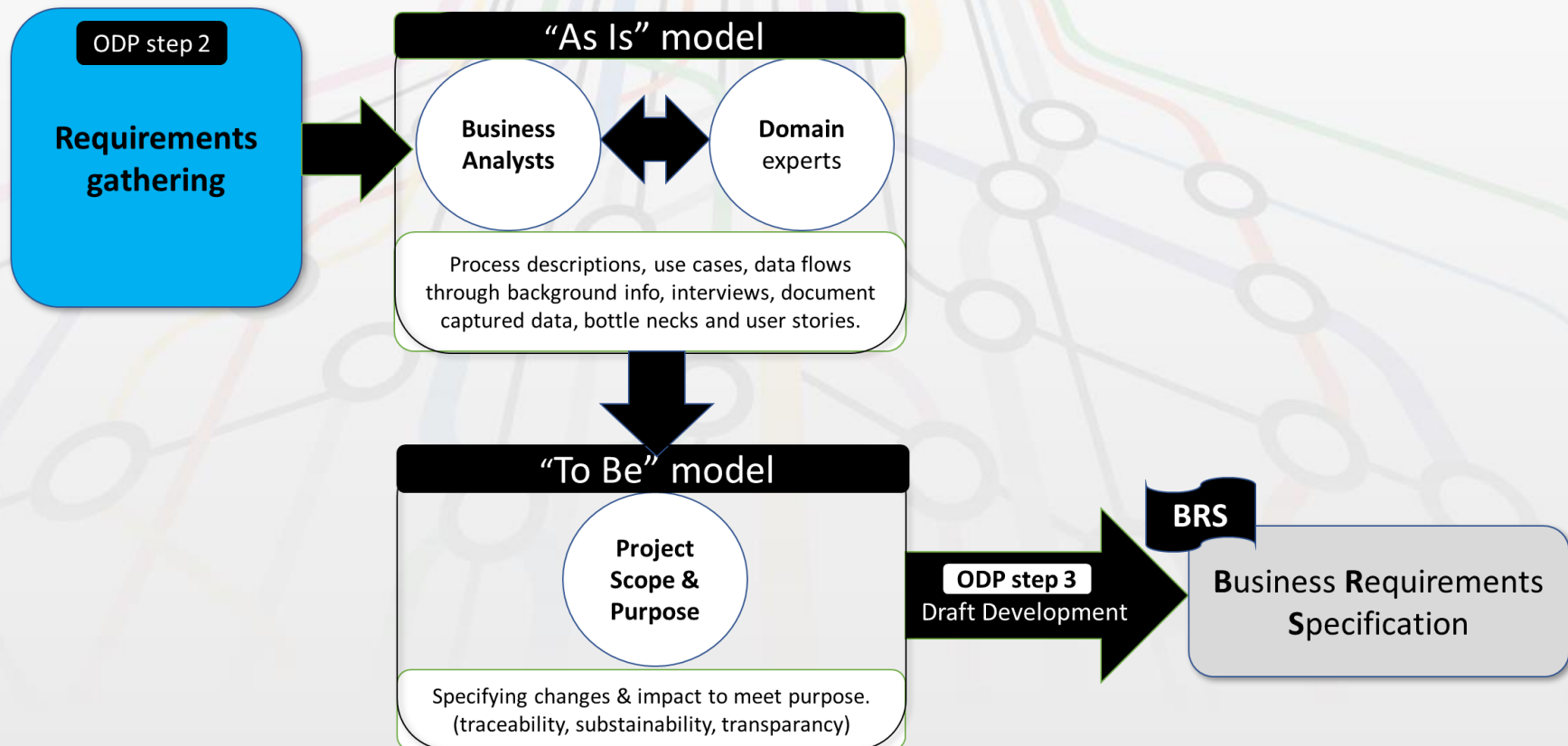
UN/CEFACT Open Development Process

UN/CEFACT Standards

Open Development Process (ODP)



From Requirements Gathering to BRS



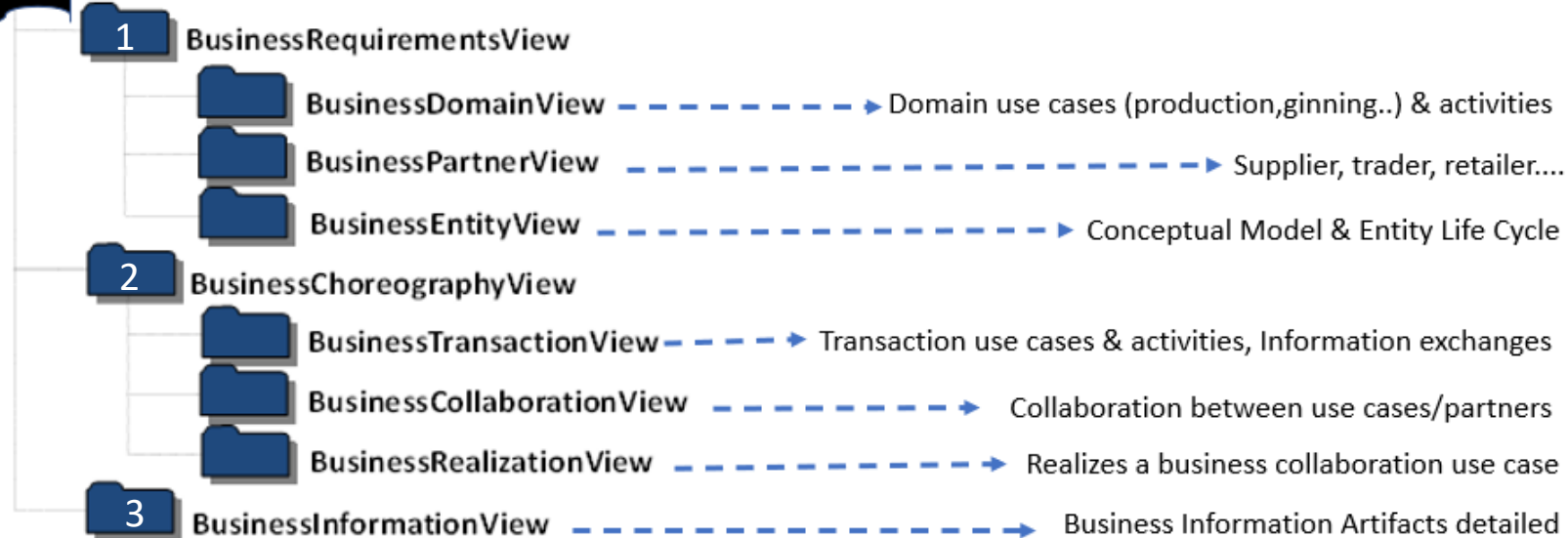
UN/CEFACT Modelling Methodology

BRSU
S
E
S

The BRS specifies user requirements in business terms and in a more formalised way as **UML** (Unified Modelling Language) artifacts. **UMM** (UN/CEFACT **M**odelling **M**ethodology) is a UML approach used for designing business services in order to collaborate.

UMM

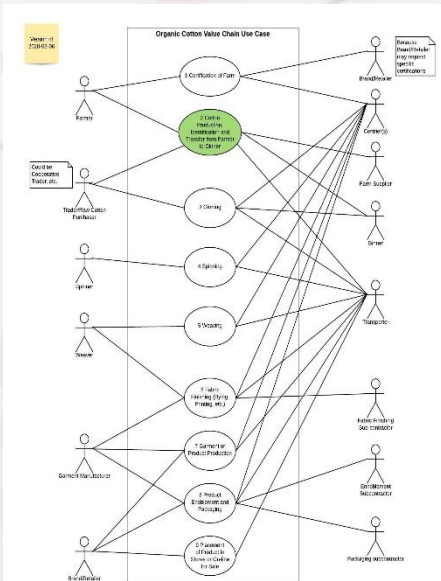
Foundation



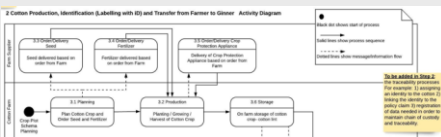
Business Requirements View

The business requirements and key business information will be presented in a numbered list (text) and UML diagrams.

Business Domain View

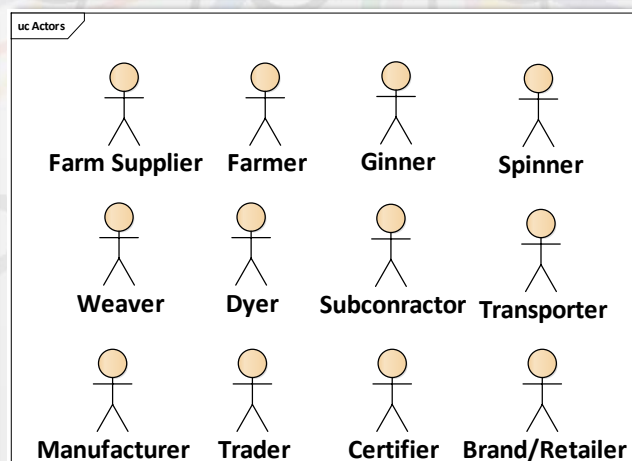


1 Use Case Value Chain



2 Use Case Activity Diagram

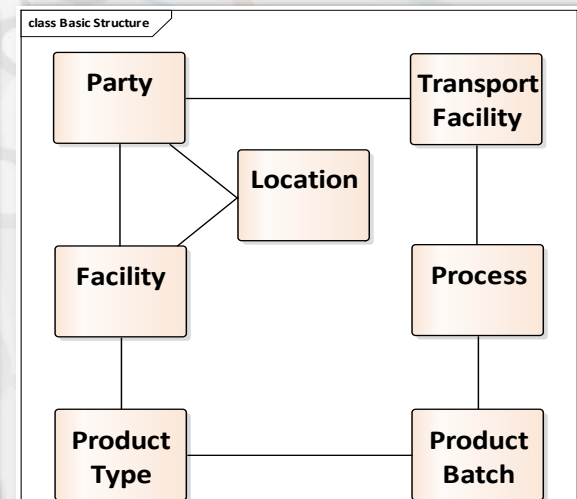
Business Partner View



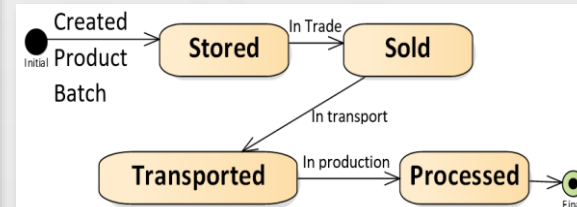
| Partner | Definition |
|---------|--|
| Farmer | A farmer (also called an agriculturer) is a person engaged in agriculture, raising living organisms for food or raw materials. |
| Ginner | A ginner is a person or company that operates machines that quickly and easily separates cotton fibers from their seeds. |

3 Actors

Business Entity View



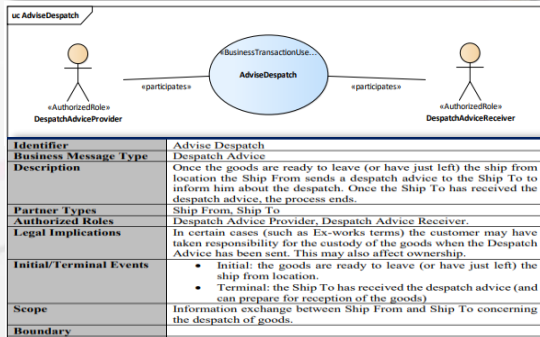
4 Key Entities



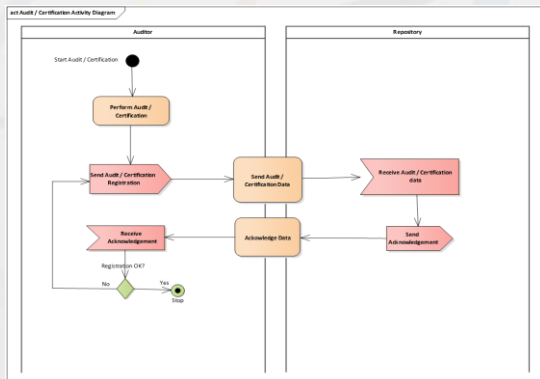
5 Entity Life Cycle

Business Choreography View

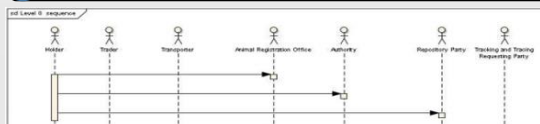
Business Transaction View



1 Transaction Use Case Diagram & Desc

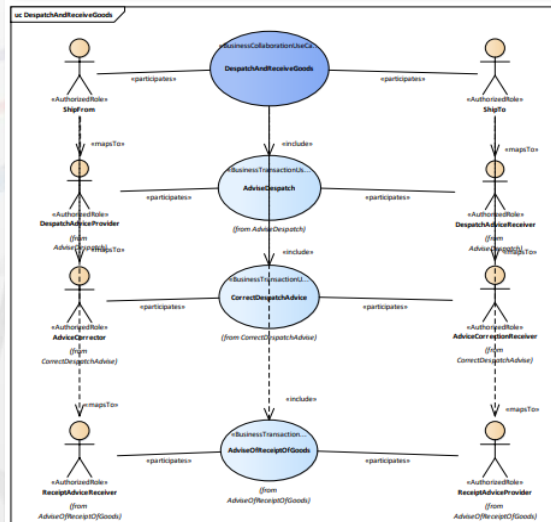


2 Transaction Activity Diagram

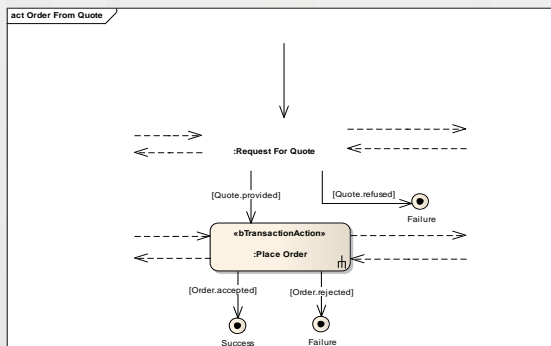


3 Transaction Sequence Diagram

Business Collaboration View

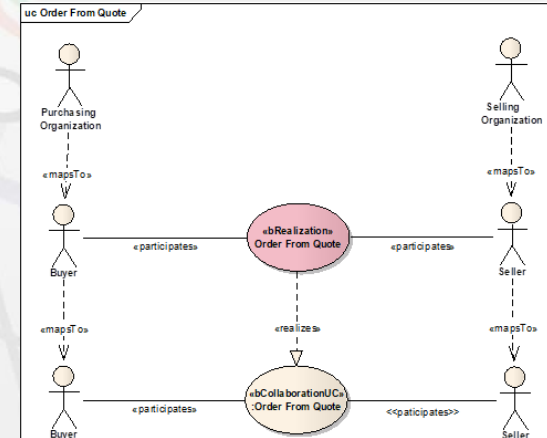


4 Use Case Collaboration Diagram



5 Collaboration Activity Diagram

Business Realization View



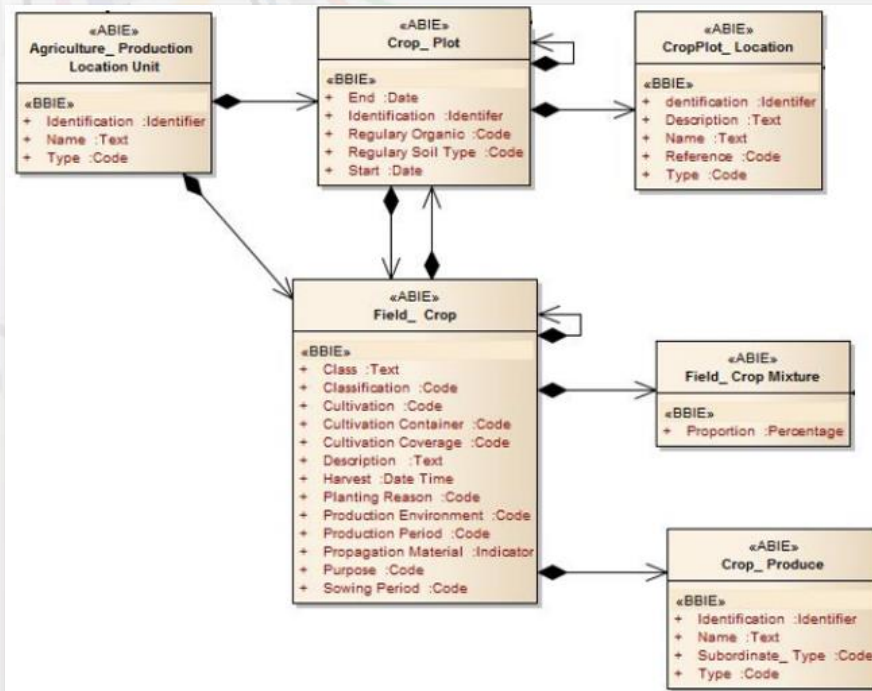
6 Use Case Realization Diagram

Business Information View

Business information using tabular form

| Crop Produce | | | |
|--------------|---------------------------|------------|--|
| Cardinality | Business term | Type | Definition |
| 0 1 | Identification | Identifier | An identifier for this crop produce. |
| 0 1 | Type | Code | The code specifying the type of crop produce. |
| 0 1 | Name | Text | The name, expressed as text, for this crop produce. |
| 0 * | Input Crop Produce Batch | | An input, such as seed or fertilizer, for this crop produce. |
| 1 * | Output Crop Produce Batch | | An output, such as cotton, for this crop produce. |

Business information using UML Classes



Note: All business requirements and business information entities will be mapped to existing and/or new technical artefacts of the UN/CEFACT Core Component Library (CCL). Business Data Exchange Structures will be derived from the data model by applying the UN/CEFACT CCBDA Methodology (“Core Component Business Document Assembly”).



UN / CEFACT



Thank you for your attention!

Gerhard Heemskerk
gerhard.heemskerk@kpnmail.nl