

Draft

November 2025

CEFACT/___/___



UNITED NATIONS ECONOMIC COMMISSION FOR EUROPE

UNITED NATIONS CENTRE FOR TRADE FACILITATION
AND ELECTRONIC BUSINESS (UN/CEFACT)

**BUSINESS REQUIREMENTS SPECIFICATION
(BRS)**

**Business processes and data interchange of electronic bill of lading based on distributed ledger
technology (DLT)**

Approved: UN/CEFACT Bureau _____

Version: 1.0

Release: 0.1

TABLE OF CONTENTS

INTRODUCTION	3
1 THE INDUSTRY PRACTICE FOR PAPER-BASED B/L BUSINESS PROCESS	4
1.1 B/L CLASSIFICATION.....	4
1.2 PAPER-BASED B/L BUSINESS PROCESS	4
2 THE ROLE OF A DIGITAL PLATFORM AND THE PROCESS OF EBL ON IT	5
3 DATA ELEMENTS AND STRUCTURES	7
3.1 GENERAL OVERVIEW OF THE DATA STRUCTURE.....	7
3.2 OVERVIEW OF B/L BODY DATA ELEMENTS AND STRUCTURE.....	7
3.3 B/L BODY DATA ELEMENTS SPECIFICATION AND ALIGNMENT WITH UN/CEFACT EBL AND UNTDED/ISO 7372, AND THE STRUCTURE	9
3.4 GENERIC EBL PROCESSING CONTROL AND RECORD ON DIGITAL PLATFORM.....	60
ANNEX 1. DEFINITIONS	69
ABBREVIATED TERMS	70
ANNEX 2. UML FOR B/L DATA EXCHANGING	72

TABLE OF FIGURES

Figure 1 — Straight B/L process	5
Figure 2 — To order B/L process	5
Figure 3 — Generic process of eBL title transfer on a digital platform	6
Figure 4 — Straight eBL transfer process and the record on a digital platform	6
Figure 5 — To order eBL endorsement and the record on a digital platform	7
Figure 6 — Overview of the data structure	7
Figure 7 — Overview of B/L body data elements and structure	9
Figure 8 — UML for B/L data exchanging	77

Introduction

This document has been developed through an open development process that involved experts from both the public and private sectors within ISO and UN/CEFACT. This joint effort ensures the document is comprehensive, inclusive, and aligned with international best practices.

The bill of lading (B/L) is the core document in relation to the carriage of goods by sea, and it has three main functions:

- the goods receipt;
- the document of title;
- the evidence of the contract of carriage.

With the rapid advancement of computer technology, the Internet, and information and communication technologies (ICT), the electronic bill of lading (eBL) has emerged as a key method of electronic data interchange (EDI) in the global economy. In recent years, industry stakeholders have placed growing emphasis on the need for tamper resistance and distributed verifiability in eBL systems. In response, eBL solutions based on distributed ledger technology (DLT) have gained traction due to their inherent features such as immutability, traceability, and reliability. DLT-based eBLs (DLT eBLs) are well-aligned with traditional B/L processes and comply with relevant international regulations. By enabling secure and efficient electronic data exchange in maritime shipping, DLT eBLs represent a transformative step forward for the industry. Compared to conventional paper-based B/L, they offer numerous advantages, including enhanced data accuracy, improved security, greater operational efficiency, and increased environmental sustainability.

Traditionally, the issuance, transfer, and verification of B/L have been resource-intensive and time-consuming processes, often involving multiple intermediaries and manual handling. However, the adoption of DLT offers a transformative alternative. By enabling peer-to-peer transactions, DLT eBLs can significantly streamline these operations while maintaining robust information security and preventing document forgery. This decentralized and tamper-resistant approach not only enhances trust and transparency across the B/L lifecycle but also promises substantial time and cost savings for all stakeholders involved in the supply chain.

The B/L process involves a wide range of participants, including carriers, shippers [large companies and small and medium-sized enterprises (SMEs)], endorsers, endorsees, consignees [large companies and small and medium-sized enterprises (SMEs)], banks, freight forwarders, underwriters, terminal operators, customs authorities, maritime regulators, and other relevant stakeholders.

This framework promotes collaboration among key stakeholders to support the development, adoption, and integration of DLT eBL and its associated applications. By addressing existing inefficiencies and compatibility challenges, this approach delivers substantial value across the entire B/L ecosystem.

a) Standardized business process for DLT eBL

This document defines a standardized business process for implementing eBL using a digital platform, replacing traditional paper-based methods. It covers typical maritime B/L processes, including both straight B/L and to order B/L.

The digital platform enables the electronic transfer and endorsement of B/Ls in a controlled, and traceable manner. While the DLT eBL process follows the conventional B/L workflow, it enhances operational control and provides end-to-end traceability throughout the distribution chain. This improvement supports secure custody and seamless transfer among shippers, resellers, banks, and consignees.

b) Data requirements and interoperability framework

This document specifies the data requirements for transitioning from paper-based to digital B/L processes, in alignment with established industry standards. It also addresses the need for compatibility across different eBL platforms by standardizing data structures, elements, and semantics.

In the context of DLT eBL, customized or proprietary access models are discouraged, as eBLs are exchanged across diverse stakeholders and systems. Therefore, establishing consensus on data elements and their codification is essential. This document presents data requirements from two perspectives (see [Figure 6](#)):

- Document structure view: defines nine segments designated (B1-B9) based on the layout of traditional B/L (see [Figure 7](#)).
- Operational and functional views: includes the business operational view (BOV), which captures foundational B/L information, and the functional service view (FSV), which defines data elements required for platform-level services.

The semantic structure aligns with the UN/CEFACT "Buy-Ship-Pay" model and supports compliance with the UNCITRAL Model Law on Electronic Transferable Records (MLETR). It is also harmonized with the UN/CEFACT Global Bill of Lading (Waybill) subset within the Multi-Modal Transport Reference Data Model (MMT-RDM). Any additional data elements identified will be fully integrated into the MMT-RDM to ensure consistency and interoperability.

Data element mapping (refer to [Clause 7](#)) follows the terminology of the United Nations Trade Data Elements Directory (UNTD/ISO 7372) and the UN/CEFACT "Buy-Ship-Pay" framework, supporting cross-platform eBL interoperability and providing a foundation for initiating eBL process on any compliant platform.

c) Trust framework and security mechanism

This document also outlines a trust framework for secure eBL exchange, leveraging DLT to ensure that access and control are governed by the title owner. By utilizing DLT's inherent capabilities, the system protects sensitive information, such as customer data, cargo details, and logistics flows, from tampering during eBL transfers.

Each eBL issued by a carrier is uniquely identifiable and fully traceable throughout its lifecycle. Blockchain, as a DLT implementation, supports this by using unique data fields to broadcast and record routing information across distributed ledgers during eBL processing. This ensures that the entire transaction remains under the control of the sender, with access restricted to authorized participants within the eBL ecosystem.

See [Annex A](#) for UML for B/L data exchange.

1 The industry practice for paper-based B/L business process

1.1 B/L classification

In general, there are two typical types of B/L issued by ocean carrier, one is a straight B/L on which the consignee is printed as a specific, and the other is a to order B/L on which the consignee is printed as "to order" or "to order of xxx".

1.2 Paper-based B/L business process

The process of handling a straight B/L is relatively simple, as illustrated in [Figure 1](#). In traditional maritime shipping, once the goods have been loaded on board, the carrier issues the B/L at the request of the shipper. The shipper then receives the original B/L and transfers it to the consignee. After the consignee obtains the original B/L and completes the payment, they present and surrender the original B/L to the carrier. In return, the carrier issues a delivery order, allowing the consignee to take delivery of the goods.

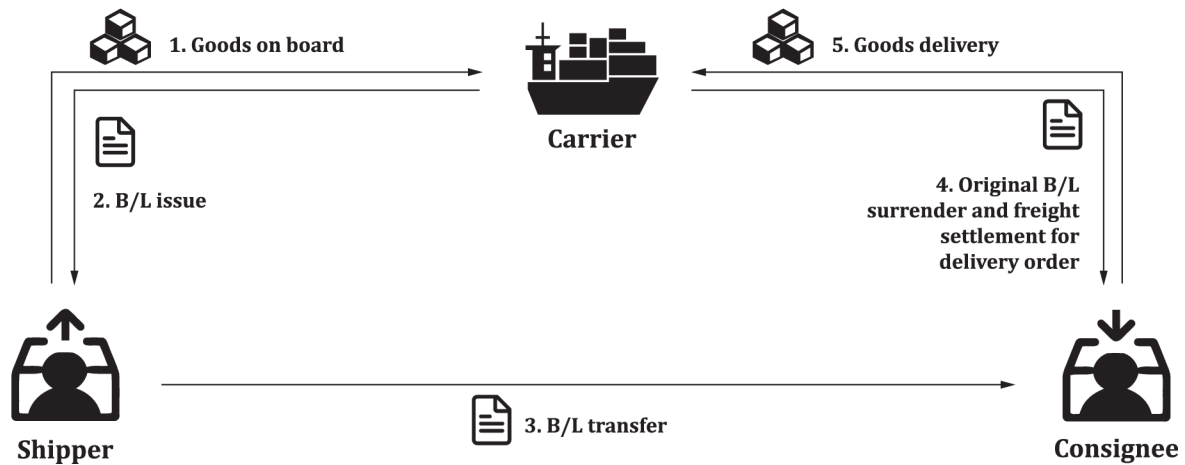


Figure 1 — Straight B/L process

The process for a to order B/L differs from that of the straight B/L after the shipper receives it from the carrier, as illustrated in [Figure 2](#). In this case, the shipper can endorse the B/L to an endorsee—typically a bank or a reseller of the goods. This endorsement transfers the title owner of the goods to the endorsee. The endorsee may then further endorse the B/L to another party, continuing the chain of title transfer. This process can be repeated multiple times until the final endorsee chooses not to endorse the B/L further. At that point, the final endorsee becomes the rightful recipient of the goods. The process of claiming the goods from the carrier against the B/L remains the same as in the straight B/L process.

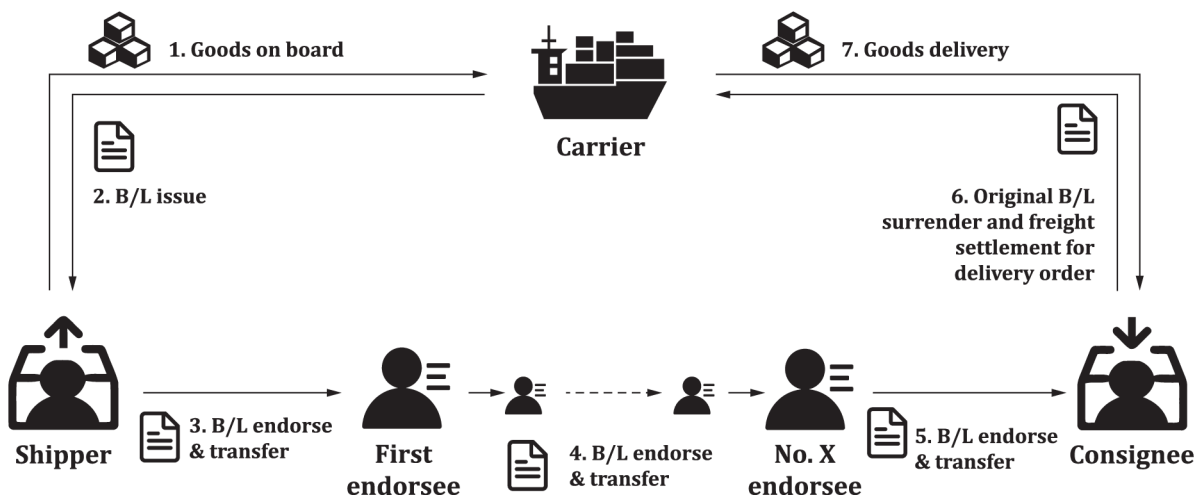


Figure 2 — To order B/L process

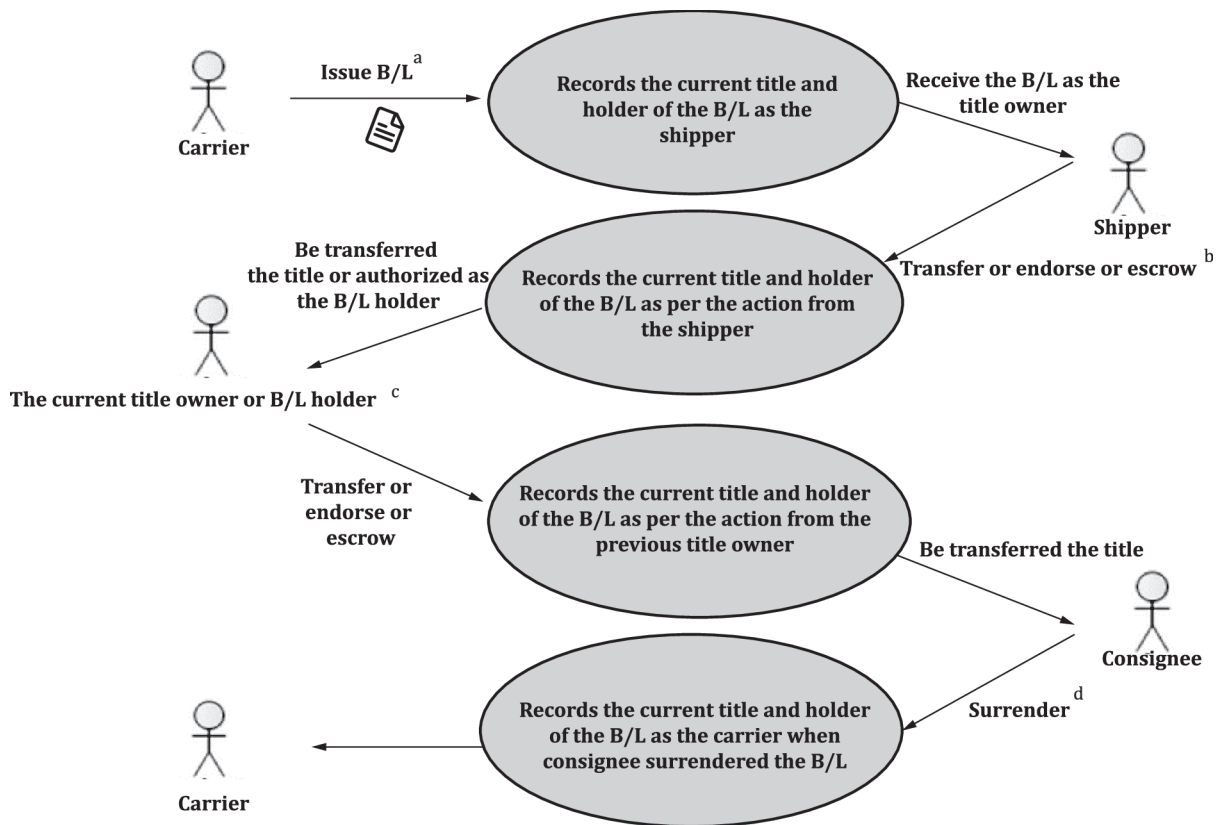
2 The role of a digital platform and the process of eBL on it

The life cycle of an eBL begins when the carrier issues the eBL to the shipper and ends when it is surrendered back to the carrier. Throughout this process, three core actions replace traditional paper-based methods, as illustrated in [Figure 3](#): transfer, endorsement, and escrow.

To support these actions, the platform should ensure the authenticity and uniqueness of eBL at every stage. It should also maintain a clear record of both the title owner and holder of the eBL during each transaction, as shown in [Figure 4](#) and [Figure 5](#).

An equally critical function of the platform is to guarantee traceability of all records while upholding data privacy and security. This includes protection against counterfeiting, tampering, data leakage, and repudiation.

Given these requirements, a DLT platform, built on trusted and secure infrastructure, is particularly well-suited for managing the complete eBL process and ensuring the integrity of all associated records.



Key

- ^a The carrier typically uses standard formats like EDIFACT, ANSI, or other industry protocols to input the data onto the platform.
- ^b Types of eBL processing:
 - 1) In the process of transfer, the shipper can transfer the title to the named consignee if the B/L is a named B/L.
 - 2) In the process of endorsement, for a to order B/L, the title can be continuously transferred via continuous endorsement.
 - 3) Escrow authorizes a party such as a bank as the B/L holder for the custodian of the B/L, and further processes the eBL according to the escrow instruction, but does not transfer the title to the B/L holder.
- ^c The title owner is always the B/L holder. However, the B/L holder can act only as a custodian rather than the title owner itself.
- ^d When the eBL is surrendered to the carrier, the title transfer is deemed terminated, and the carrier is requested to deliver the goods against the B/L.

Figure 3 — Generic process of eBL title transfer on a digital platform

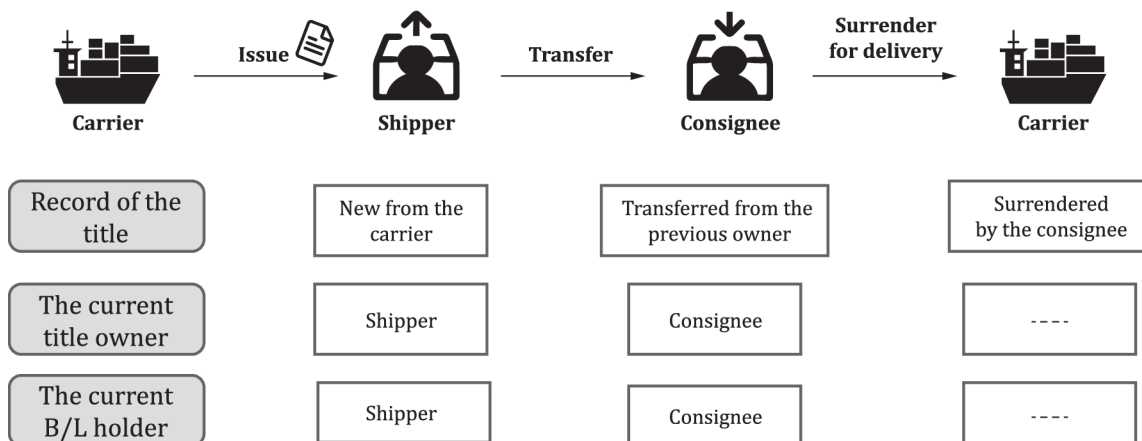


Figure 4 — Straight eBL transfer process and the record on a digital platform

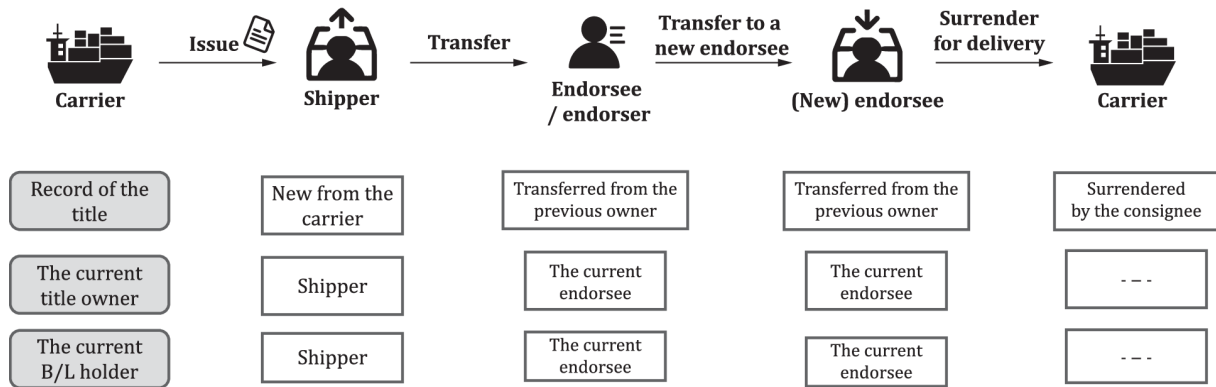
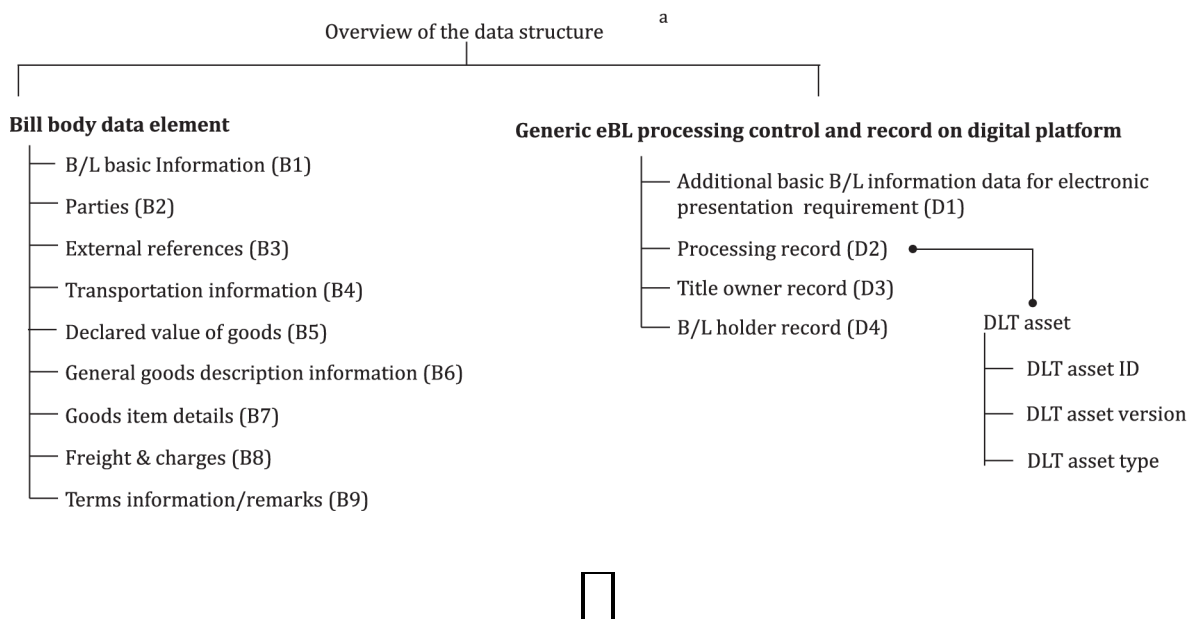


Figure 5 — To order eBL endorsement and the record on a digital platform

3 Data elements and structures

3.1 General overview of the data structure

This document specifies the data elements from two perspectives (see [Figure 6](#)). The first perspective specifies the data elements of the B/L body, which include nine segments from B1 to B9 based on the B/L document layout (see [Figure 7](#)). The second perspective focuses on eBL processing requirements, including basic B/L information (BOV) and additional data elements required by platform service functions (FSV). For DLT platform implementation, only the additional digital asset data elements (FSV) are required.



Key

^a For semantics and detailed structure, see [Table 1](#) to [Table 10](#).

NOTE 1 There are several standard formats (syntax) for B/L issuance. Thus, this document focuses on the semantics of eBL data and the FSV component for standardizing the elements and structure related to eBL processing.

NOTE 2 The DLT asset ID is unique when implementing eBL on a DLT platform, as compared to asset IDs on other digital platforms.

Figure 6 — Overview of the data structure

3.2 Overview of B/L body data elements and structure

The B/L document layout is widely aligned with UNLK in the industry. Thus, the data elements and structure are also standardized. However, the maritime industry has developed into various segments, which cause barriers to semantic consistency across different sea transportation modes, such as bulk, tank and container shipping. Moreover, container as the transportation equipment supports ocean shipping based multimodal transportation, new data elements are required for its B/L in compared to other ocean

shipping segments. This standard is compatible with all types of ocean transportation and is aligned with UN/CEFACT and MMT-RDM standard, which means it applies to intermodal transportation as well.

PARTICULARS FURNISHED BY SHIPPER					
CNTR. NOS. WISEAL NOS. MARKS & NUMBERS	QUANTITY PACKAGES	M	DESCRIPTION OF PACKAGES AND GOODS	GROSS WEIGHT	MEASUREMENT
	18 Pieces			599.940KGS	3.2910CBM
	268 Pieces			11835.520KGS	32.8080CBM
	63 Pieces			2451.690KGS	6.6550CBM
	240			2061.970KGS	6.7130CBM
** TO BE CONTINUED ON ATTACHED LIST **					
Declared Cargo Value: B5					
Total Number of Container and/or Packages (in words) Subject to Clause 8 Limitation of Liability SAY ONE CONTAINER TOTAL <i>General goods description information (B6)</i>					
FREIGHT & CHARGES	REV/TON	RATE	PER	AMOUNT	PPD COL PAYABLE AT/BY
Ocean Freight 1			1140HQ	USD	PPD Singapore
BUNKER CHARGE			1140HQ	USD	PPD Singapore
TOTAL				USD	PPD
Received the described goods or packages of containers said to contain goods, in apparent good order and condition, unless otherwise indicated, to be transported and delivered as herein provided. The receipt, custody, carriage and delivery of the goods are subject to the terms, conditions, clauses and back thereof and to the Carrier's applicable tariff. In witness whereof 1 original bills of lading have been signed, one of which being accomplished, the other(s) to be void. B1					
Cargo Recv Date					
Marks & Nos. Container / Seal No.	No. of Container or Packages	Description of Goods (if Dangerous Goods, See Clause 20)		Gross Weight	Measurement
RESPONSIBILITY OF THE CARRIER IN RESPECT OF ALL AND ANY DAMAGE OR LOSS OF THE CARGO DURING INLAND TRANSPORTATION OF THE CARGO IN MEXICAN TERRITORY IS DEEMED TO BE STRICTLY IN COMPLIANCE WITH THE STIPULATIONS OF THE MEXICAN ROAD, BRIDGES AND INLAND TRANSPORTATION LAW. ON CY-DOOR TERM B9					

- Key**
- B1 B/L basic information
 - B2 parties
 - B3 external references
 - B4 transportation information
 - B5 declared value of goods
 - B6 general goods description information
 - B7 goods item details
 - B8 freight & charges
 - B9 terms information/Remarks

NOTE 1 In practice, the endorsee and endorsement information are on the back of the B/L when the paper-based B/L is endorsed.

NOTE 2 The elaboration on B/L body data elements is based on the B/L layout in practice which is widely used and aligned with UNLK in the industry.

NOTE 3 A sea waybill can also be issued by the sea carrier to the shipper. Its layout is the same as B/L, but the document type “sea waybill” is clearly printed on the body. Additionally, since it is not a negotiable document, there is neither endorsement on the back nor an “original” mark on the face.

NOTE 4 UNTDED 1001 document name code is as follows

705 Bill of Lading

Negotiable document/message which evidences a contract of carriage by sea and the taking over or loading of goods by carrier, and by which carrier undertakes to deliver goods against surrender of the document. A provision in the document that goods are to be delivered to the order of a named person, or to order, or to bearer, constitutes such an undertaking.

706 Bill of Lading Original

The original of the B/L issued by a transport company. When issued by the maritime industry it could signify ownership of the cargo.

710 Sea Waybill

Non-negotiable document which evidences a contract for the carriage of goods by sea and the taking over of the goods by the carrier, and by which the carrier undertakes to deliver the goods to the consignee named in the document.

Figure 7 — Overview of B/L body data elements and structure

3.3 *B/L body data elements specification and alignment with UN/CEFACT eBL and UNTDED/ISO 7372, and the structure*

In this subclause, eBL data elements and structures are defined, elaborated and mapped to standardized directories, namely UNTDED/ISO 7372 and UNID UN/CCL (see [Table 1](#) to [Table 9](#)).

The mapping process ensures that each eBL data element is referenced using a unique identifier from UN/CCL and UNTDED. The code lists used are the same as those in UN/EDIFACT. The underlined UNIDs and UNTDED/ISO 7372 references in the following table indicate that data alignment has been verified.

By mapping to UNTDED and UN/CCL identifiers, the alignment of eBL data elements and structure across different standards developed by various organizations or systems is ensured through these critical directory IDs.

Table 1 — B/L basic information (B1)

Object name	Field name	Type	M/O	Occurrence	Description	UNID	UNTDDED / ISO 7372
B/L basic information		Object	M	1..1			
B/L basic information	Document type	String	M	1..1	<p>The type of the document being exchanged, for eBL, the relevant code could be selected from UNTDED 1001, here below are some of the examples:</p> <p>704 Master Bill of Lading A bill of lading issued by the master of a vessel (in actuality the owner or charterer of the vessel). It could cover a number of house bills.</p> <p>705 Bill of Lading Document which evidences a contract of carriage by sea and the taking over or loading of goods by the carrier, and by which the carrier undertakes to deliver the goods against surrender of the document.</p> <p>707 Bill of Lading copy A copy of the bill of lading issued by a transport company.</p> <p>710 Sea Waybill Non-negotiable document which evidences a contract for the carriage of goods by sea and the taking over of the goods by the carrier, and by which the carrier undertakes to deliver the goods to the consignee named in the document.</p>	<u>UN010024</u> <u>91</u>	<u>1001</u>
B/L basic information	B/L number	String	M	1..1	B/L number, the unique identifier assigned by the carrier to the shipment when making the B/L. Its meaning is totally different from the booking reference number assigned when cargo space is reserved. However, from an	<u>UN010041</u> <u>64</u>	<u>1065</u>

Object name	Field name	Type	M/O	Occurrence	Description	UNID	UNTDDED / ISO 7372
					operation perspective, it may be same as the booking reference number or totally different, depending on operation requirements. This is the “carrier assigned ID” in UN/CCL.		
B/L basic information	Document version	String	M	1..1	Original B/L version, provided by the carrier triggered from issuing the final original B/L in their in-house system.	<u>UN010035</u> <u>73</u>	<u>1057</u>
B/L basic information	B/L set	Integer	M	1..1	Total number, in figures, of the originals of B/L issued.	<u>UN010035</u> <u>59</u>	<u>1067</u>
B/L basic information	B/L total pages	Integer	M	1..1	Total number of pages in a document.	<u>UN010035</u> <u>77</u>	<u>1046</u>
B/L basic information	Carrier booking numbers	Array of string	O	0..n	Reference number assigned by a carrier or its agent to identify a specific consignment such as a booking reference number when cargo space is reserved prior to loading.	<u>UN010015</u> <u>77 +</u> <u>UN010039</u> <u>91</u>	<u>1016</u>
B/L basic information	Transport service contract number	String	O	0..1	Reference number identifying a transport service contract that this shipment is additional to.	<u>UN010150</u> <u>88</u>	<u>1296</u>
B/L basic information	Place of issue	Object	M	1..1	Office location where the original B/L was issued, recommend using location structure at UN/EDIFACT.	<u>UN010040</u> <u>18</u>	<u>3410</u>
Place of issue	Location code	String	O	0..1	Location identifier of terminal in port, or smaller location, such as terminal depot, rail ramp, e.g., SMDG Recommend to use UNECE Recommendation 16: UNLOCODE.	<u>UN010036</u> <u>80</u>	<u>3225</u>
Place of issue	Location name	String	M	1..1	Name of the location. e.g., Shanghai.	<u>UN010036</u> <u>81</u>	<u>3224</u>

Object name	Field name	Type	M/O	Occurrence	Description	UNID	UNTDDED / ISO 7372
B/L basic information	Date of issue	String	M	1..1	B/L issue date. Reference to ISO 8601-1.	<u>UN010024</u> <u>93</u>	<u>2007</u>
B/L basic information	Date laden on board	String	M	1..1	Date laden on board the main carriage vessel (sea going vessel or ocean vessel). Reference to ISO 8601-1.	<u>UN010150</u> <u>89</u>	<u>2347</u>
B/L basic information	Endorsement	Object	O	0..n	The endorsement on the B/L. In paper it's endorsed on the back of the bill of lading and can be zero when the B/L is named B/L, or it can be one to multiple when the B/L is to order, depending on the trade requirement.		
Endorsement	Endorsee	Object	M	1..1	See 3.6 Party in whose favour a negotiable <i>B/L</i> is endorsed.		
Endorsee	Party ID	String	O	0..1	A unique identifier of this trade party. Usually, it's a unique registration code or global identifiable code assigned in an ID scheme.	<u>UN010045</u> <u>95</u>	<u>3039</u>
Endorsee	Party name text	String	M	1..1	Name of a party.	<u>UN010045</u> <u>98</u>	<u>3036</u>
Endorsee	Party platform identifier	String	M	1..1	The unique ID specifying the identity of a party in the eBL platform.		
Endorsee	Contact	Object	O	0..n	Party contact including contact ID, name, and department name.	<u>UN010046</u> <u>02</u>	
Contact	Contact ID	String	O	0..1	The unique identifier for this contact. The unique ID in the system or B/L to identify the contact, like the state ID, or other global identifiable ID assigned in an ID scheme.	<u>UN010016</u> <u>41</u>	<u>3413</u>
Contact	Contact name	String	O	0..1	The name, expressed as text, of this contact person.	<u>UN010016</u> <u>42</u>	<u>3412</u>
Contact	Department name	String	O	0..1	The name, expressed as text, of the department to which this contact belongs within an organization.	<u>UN010016</u> <u>43</u>	<u>3412</u>

Object name	Field name	Type	M/O	Occurrence	Description	UNID	UNTDDED / ISO 7372
Contact	Contact platform identifier	String	O	0..1	To identify a department or employee ID in the context of the party where has belonged to. The unique ID assigned in the eBL platform.		
Contact	Communication	Object	O	0..1	Including phone, fax, e-mail, postal address and/or reference of the contact.		
Communication	Contact phone	String	O	0..1	A telephone communication for this party. Telephone number, including country and/or city code as required, for voice or data transmission by telephone beyond the border of a country.	<u>UN010045</u> <u>64</u>	<u>3155+314</u> <u>8</u>
Communication	Contact fax	String	O	0..1	Fax communication information for this location party. Communication service involving teletypewriter machines connected by wire or electronic transmission media. Teletypewriter machines are the devices used to send and receive signals and produce hardcopy from them.	<u>UN010045</u> <u>67</u>	<u>3155+314</u> <u>8</u>
Communication	Contact email address	String	O	0..1	The Uniform Resource Identifier (URI), such as a web or an email address, for this universal communication.	<u>UN010045</u> <u>69</u>	<u>3155+314</u> <u>8</u>
Endorsee	Postal address	Object	O	0..1	The postal address for this trade party.		
Postal address	Address description	Array of string	O	0..1	To specify the name/address and their related function.	<u>UN010046</u> <u>03</u>	
Postal address	Postcode	String	O	0..1	Code specifying a postal zone or address.	<u>UN010045</u> <u>35</u>	<u>3251</u>
Postal address	Street name	String	O	0..1	Specification of the postal delivery point such as street and number or post office box.	<u>UN010045</u> <u>43</u>	<u>3042</u>
Postal address	City name	String	O	0..1	Name of a city.	<u>UN010045</u> <u>44</u>	<u>3164</u>

Object name	Field name	Type	M/O	Occurrence	Description	UNID	UNTDED / ISO 7372
Postal address	Country subdivision name	String	O	0..1	Name of a country subdivision.	<u>UN010045</u> <u>49</u>	<u>3228</u>
Postal address	Country code	String	O	0..1	Identification of the name of the country or other geographical entity. Reference to ISO 3166-1.	<u>UN010045</u> <u>46</u>	<u>3207</u>
Postal address	Country name	String	O	0..1	Name of the country or other geographical entity	<u>UN010045</u> <u>47</u>	<u>3206</u>
Endorsee	Party external references	Object	O	0..n	Reference of that party, e.g., USCI and EORI. Consider using the repeatable UN/CCL party identifier structure (ID, identification scheme, identification scheme agency)		
Party external references	Tax authority ID	String	O	0..1	Party identifier for tax authority.	<u>UN010044</u> <u>87</u>	<u>3446</u>
Party external references	Customs ID	String	O	0..1	Party identifier for customs.	<u>UN010045</u> <u>95</u>	
Party external references	Reference type	String	O	0..1	Reference type, it is recommended to use the UNECE code list. The reference may not be a document, for example, a bulk carrier can use this field to identify the B/L related to a voyage charter party. (For UNTDED for associated documents shall be made here) 1153 Reference code qualifier, code qualifying a reference. e.g., RF Export reference number, reference number given to an export shipment.	<u>UN010060</u> <u>36</u>	<u>1153</u>
Party external references	Reference number	String	O	0..1	Identifies a reference.	<u>UN010039</u> <u>91</u>	<u>1154</u>

Object name	Field name	Type	M/O	Occurrence	Description	UNID	UNTDDED / ISO 7372
					Under the circumstance that the voyage charter party needs to be incorporated into the B/L, the date to identify the voyage charter party under which the B/L is issued.		
Endorsement	Endorsement date	String	M	1..1	The date in which endorsing has occurred to the party from the previous holder.		

Table 2 — Parties (B2)

Object name	Field name	Type	M / O	Occurrence	Description	UNID	UNTDDED / ISO 7372
Parties	Carrier	Object	M	1..1	See 3.3	<u>UN010042</u> <u>14</u>	<u>3126</u>
Carrier	Party ID	String	O	0..1	A unique identifier of this trade party. Usually, it's a unique registration code or global identifiable code assigned in an ID scheme.	<u>UN010045</u> <u>95</u>	<u>3039</u>
Carrier	Party name text	String	M	1..1	Name of a party.	<u>UN010045</u> <u>98</u>	<u>3036</u>
Carrier	Party platform identifier	String	M	1..1	Code specifying the identity of a party. The unique ID in the eBL platform.		
Carrier	Contact	Object	O	0..n	Party contact including contact ID, name, and department name.	<u>UN010046</u> <u>02</u>	
Contact	Contact ID	String	O	0..1	The unique identifier for this contact. The unique ID in the system or B/L to identify the contact, like the state ID, or other global identifiable ID assigned in an ID scheme.	<u>UN010016</u> <u>41</u>	<u>3413</u>
Contact	Contact name	String	O	0..1	The name, expressed as text, of this contact person.	<u>UN010016</u> <u>42</u>	<u>3412</u>
Contact	Department name	String	O	0..1	The name, expressed as text, of the department to which this contact belongs within an organization.	<u>UN010016</u> <u>43</u>	<u>3412</u>
Contact	Contact platform identifier	String	O	0..1	To identify a department or employee ID in the context of the party where has belonged to. The unique ID assigned in the eBL platform.		
Contact	Communication	Object	O	0..1	Including phone, fax, e-mail, postal address and/or reference of the contact.		

Object name	Field name	Type	M / O	Occurrence	Description	UNID	UNTDDED / ISO 7372
Communication	Contact phone	String	O	0..1	A telephone communication for this party. Telephone number, including country and/or city code as required, for voice or data transmission by telephone beyond the border of a country.	<u>UN010045</u> <u>64</u>	<u>3155+314</u> <u>8</u>
Communication	Contact fax	String	O	0..1	Fax communication information for this location party. Communication service involving teletypewriter machines connected by wire or electronic transmission media. Teletypewriter machines are the devices used to send and receive signals and produce hardcopy from them.	<u>UN010045</u> <u>67</u>	<u>3155+314</u> <u>8</u>
Communication	Contact email address	String	O	0..1	The Uniform Resource Identifier (URI), such as a web or an email address, for this universal communication.	<u>UN010045</u> <u>69</u>	<u>3155+314</u> <u>8</u>
Carrier	Postal address	Object	M	1..1	The postal address for this trade party.		
Postal address	Address description	Array of string	M	0..1	To specify the name/address and their related function.	<u>UN010046</u> <u>03</u>	
Postal address	Postcode	String	O	0..1	Code specifying a postal zone or address.	<u>UN010045</u> <u>35</u>	<u>3251</u>
Postal address	Street name	String	O	0..1	Specification of the postal delivery point such as street and number or post office box.	<u>UN010045</u> <u>43</u>	<u>3042</u>
Postal address	City name	String	O	0..1	Name of a city.	<u>UN010045</u> <u>44</u>	<u>3164</u>
Postal address	Country subdivision name	String	O	0..1	Name of a country subdivision.	<u>UN010045</u> <u>49</u>	<u>3228</u>
Postal address	Country code	String	O	0..1	Identification of the name of the country or other geographical entity. Reference to ISO 3166-1.	<u>UN010045</u> <u>46</u>	<u>3207</u>
Postal address	Country name	String	O	0..1	Name of the country or other geographical entity.	<u>UN010045</u> <u>47</u>	<u>3206</u>

Object name	Field name	Type	M / O	Occurrence	Description	UNID	UNTDDED / ISO 7372
Carrier	Party external references	Object	O	0..n	Reference of that party, e.g., USCI and EORI. Consider using the repeatable UN/CCL party identifier structure (ID, identification scheme, identification scheme agency).		
Party external references	Tax authority ID	String	O	0..1	Party identifier for tax authority.	<u>UN010044</u> <u>87</u>	<u>3446</u>
Party external references	Customs ID	String	O	0..1	Party identifier for customs.	<u>UN010045</u> <u>95</u>	
Party external references	Reference type	String	O	0..1	Reference type, it is recommended to use the UNECE code list. The reference may not be a document, for example, a bulk carrier can use this field to identify the B/L related to a voyage charter party. (For UNTDED for associated documents shall be made here) 1153 Reference code, qualifier code qualifying a reference. e.g., RF Export reference number, reference number given to an export shipment.	<u>UN010060</u> <u>36</u>	<u>1153</u>
Party external references	Reference number	String	O	0..1	Identifies a reference. Under the circumstance that the voyage charter party needs to be incorporated into the B/L, the date to identify the voyage charter party under which the B/L is issued.	<u>UN010039</u> <u>91</u>	<u>1154</u>
Parties	Shipper	Object	M	1..1	see 3.8 . Party which, according to the booking instructions stated on the <i>B/L</i> , by contract with a <i>carrier</i> , consigns or sends goods with the carrier, or has them conveyed by the carrier, and has the right to require the carrier to issue the B/L and undertake corresponding obligations.	<u>UN010042</u> <u>12</u>	3336

Object name	Field name	Type	M / O	Occurrence	Description	UNID	UNTDDED / ISO 7372
Shipper	Party ID	String	O	0..1	A unique identifier of this trade party. Usually, it's a unique registration code or global identifiable code assigned in an ID scheme.	<u>UN010045</u> <u>95</u>	<u>3039</u>
Shipper	Party name text	String	M	1..1	Name of a party.	<u>UN010045</u> <u>98</u>	<u>3036</u>
Shipper	Party platform identifier	String	M	1..1	Code specifying the identity of a party. The unique ID in the eBL platform.		
Shipper	Contact	Object	O	0..n	Party contact including contact ID, name, and department name.	<u>UN010046</u> <u>02</u>	
Contact	Contact ID	String	O	0..1	The unique identifier for this contact. The unique ID in the system or B/L to identify the contact, like the state ID, or other global identifiable ID assigned in an ID scheme.	<u>UN010016</u> <u>41</u>	<u>3413</u>
Contact	Contact name	String	O	0..1	The name, expressed as text, of this contact person.	<u>UN010016</u> <u>42</u>	<u>3412</u>
Contact	Department name	String	O	0..1	The name, expressed as text, of the department to which this contact belongs within an organization.	<u>UN010016</u> <u>43</u>	<u>3412</u>
Contact	Contact platform identifier	String	O	0..1	To identify a department or employee ID in the context of the party where has belonged to. The unique ID assigned in the eBL platform.		
Contact	Communication	Object	O	0..1	Including phone, fax, e-mail, postal address and/or reference of the contact.		
Communication	Contact phone	String	O	0..1	A telephone communication for this party. Telephone number, including country and/or city code as required, for voice or data transmission by telephone beyond the border of a country.	<u>UN010045</u> <u>64</u>	<u>3155+314</u> <u>8</u>

Object name	Field name	Type	M / O	Occurrence	Description	UNID	UNTDDED / ISO 7372
Communication	Contact fax	String	O	0..1	Fax communication information for this location party. Communication service involving teletypewriter machines connected by wire or electronic transmission media. Teletypewriter machines are the devices used to send and receive signals and produce hardcopy from them.	<u>UN010045</u> <u>67</u>	<u>3155+314</u> <u>8</u>
Communication	Contact email address	String	O	0..1	The Uniform Resource Identifier (URI), such as a web or an email address, for this universal communication.	<u>UN010045</u> <u>69</u>	<u>3155+314</u> <u>8</u>
Shipper	Postal address	Object	M	1..1	The postal address for this trade party.		
Postal address	Address description	Array of string	M	0..1	To specify the name/address and their related function.	<u>UN010046</u> <u>03</u>	
Postal address	Postcode	String	O	0..1	Code specifying a postal zone or address.	<u>UN010045</u> <u>35</u>	<u>3251</u>
Postal address	Street name	String	O	0..1	Specification of the postal delivery point such as street and number or post office box.	<u>UN010045</u> <u>43</u>	<u>3042</u>
Postal address	City name	String	O	0..1	Name of a city.	<u>UN010045</u> <u>44</u>	<u>3164</u>
Postal address	Country subdivision name	String	O	0..1	Name of a country subdivision.	<u>UN010045</u> <u>49</u>	<u>3228</u>
Postal address	Country code	String	O	0..1	Identification of the name of the country or other geographical entity. Reference to ISO 3166-1.	<u>UN010045</u> <u>46</u>	<u>3207</u>
Postal address	Country name	String	O	0..1	Name of the country or other geographical entity.	<u>UN010045</u> <u>47</u>	<u>3206</u>
Shipper	Party external references	Object	O	0..n	Reference of the party, e.g., USCI and EORI. Consider using the repeatable UN/CCL party identifier structure (ID, identification scheme, identification scheme agency).		

Object name	Field name	Type	M / O	Occurrence	Description	UNID	UNTDDED / ISO 7372
Party external references	Tax authority ID	String	O	0..1	Party identifier for tax authority.	<u>UN010044</u> <u>87</u>	<u>3446</u>
Party external references	Customs ID	String	O	0..1	Party identifier for customs.	<u>UN010045</u> <u>95</u>	
Party external references	Reference type	String	O	0..1	Reference type, it is recommended to use the UNECE code list. The reference may not be a document, for example, a bulk carrier can use this field to identify the B/L related to a voyage charter party. (For UNTDED for associated documents shall be made here) 1153 Reference code qualifier, code qualifying a reference. e.g., RF Export reference number, reference number given to an export shipment.	<u>UN010060</u> <u>36</u>	<u>1153</u>
Party external references	Reference number	String	O	0..1	Identifies a reference. Under the circumstance that the voyage charter party needs to be incorporated into the B/L, the date to identify the voyage charter party under which the B/L is issued.	<u>UN010039</u> <u>91</u>	<u>1154</u>
Parties	Consignee	Object	M	1..1	See 3.4 Party to whom goods are shipped.	<u>UN010042</u> <u>13</u>	
Consignee	Party ID	String	O	0..1	A unique identifier of this trade party. Usually, it's a unique registration code or global identifiable code assigned in an ID scheme.	<u>UN010045</u> <u>95</u>	<u>3039</u>
Consignee	Party name text	String	M	1..1	Name of a party.	<u>UN010045</u> <u>98</u>	<u>3036</u>
Consignee	Party platform identifier	String	M	1..1	Code specifying the identity of a party. The unique ID in the eBL platform.		

Object name	Field name	Type	M / O	Occurrence	Description	UNID	UNTDDED / ISO 7372
Consignee	Contact	Object	O	0..n	Party contact including contact ID, name, and department name.	<u>UN010046</u> <u>02</u>	
Contact	Contact ID	String	O	0..1	The unique identifier for this contact. The unique ID in the system or B/L to identify the contact, like the State ID, or other global identifiable ID assigned in an ID scheme.	<u>UN010016</u> <u>41</u>	<u>3413</u>
Contact	Contact name	String	O	0..1	The name, expressed as text, of this contact person.	<u>UN010016</u> <u>42</u>	<u>3412</u>
Contact	Department name	String	O	0..1	The name, expressed as text, of the department to which this contact belongs within an organization.	<u>UN010016</u> <u>43</u>	<u>3412</u>
Contact	Contact platform identifier	String	O	0..1	To identify a department or employee ID in the context of the party where has belonged to. The unique ID assigned in the eBL platform.		
Contact	Communication	Object	O	0..1	Including phone, fax, e-mail, postal address and/or reference of the contact.		
Communication	Contact phone	String	O	0..1	A telephone communication for this party. Telephone number, including country and/or city code as required, for voice or data transmission by telephone beyond the border of a country.	<u>UN010045</u> <u>64</u>	<u>3155+314</u> <u>8</u>
Communication	Contact fax	String	O	0..1	Fax communication information for this location party. Communication service involving teletypewriter machines connected by wire or electronic transmission media. Teletypewriter machines are the devices used to send and receive signals and produce hardcopy from them.	<u>UN010045</u> <u>67</u>	<u>3155+314</u> <u>8</u>
Communication	Contact email address	String	O	0..1	The Uniform Resource Identifier (URI), such as a web or an email address, for this universal communication.	<u>UN010045</u> <u>69</u>	<u>3155+314</u> <u>8</u>
Consignee	Postal address	Object	O	0..1	The postal address for this trade party.		

Object name	Field name	Type	M / O	Occurrence	Description	UNID	UNTDDED / ISO 7372
Postal address	Address description	Array of string	O	0..1	To specify the name/address and their related function.	<u>UN010046</u> <u>03</u>	
Postal address	Postcode	String	O	0..1	Code specifying a postal zone or address.	<u>UN010045</u> <u>35</u>	<u>3251</u>
Postal address	Street name	String	O	0..1	Specification of the postal delivery point such as street and number or post office box.	<u>UN010045</u> <u>43</u>	<u>3042</u>
Postal address	City name	String	O	0..1	Name of a city.	<u>UN010045</u> <u>44</u>	<u>3164</u>
Postal address	Country subdivision name	String	O	0..1	Name of a country subdivision.	<u>UN010045</u> <u>49</u>	<u>3228</u>
Postal address	Country code	String	O	0..1	Identification of the name of the country or other geographical entity. Reference to ISO 3166-1.	<u>UN010045</u> <u>46</u>	<u>3207</u>
Postal address	Country name	String	O	0..1	Name of the country or other geographical entity.	<u>UN010045</u> <u>47</u>	<u>3206</u>
Consignee	Party external references	Object	O	0..n	Reference of that party, e.g., USCI and EORI. Consider using the repeatable UN/CCL party identifier structure (ID, identification scheme, identification scheme agency).		
Party external references	Tax authority ID	String	O	0..1	Party identifier for tax authority.	<u>UN010044</u> <u>87</u>	<u>3446</u>
Party external references	Customs ID	String	O	0..1	Party identifier for customs.	<u>UN010045</u> <u>95</u>	
Party external references	Reference type	String	O	0..1	Reference type, it is recommended to use the UNECE code list. The reference may not be a document, for example, a bulk carrier can use this field to identify the B/L related to a voyage charter party. For UNTDED, associated documents shall be made here.	<u>UN010060</u> <u>36</u>	<u>1153</u>

Object name	Field name	Type	M / O	Occurrence	Description	UNID	UNTDED / ISO 7372
					1153 Reference code qualifier, code qualifying a reference. e.g., RF Export reference number, reference number given to an export shipment.		
Party external references	Reference number	String	O	0..1	Identifies a reference. Under the circumstance that the voyage charter party needs to be incorporated into the B/L, the date to identify the voyage charter party under which the B/L is issued.	<u>UN010039</u> <u>91</u>	<u>1154</u>
Parties	Freight forwarder	Object	O	0..1	The party arranging the carriage of goods, including connected services and/or associated formalities, on behalf of a shipper or consignee. There is party code specified for freight forwarder at UNTDED 3035, the code is FW, and definition is "Freight forwarder, party arranging forwarding of goods."	<u>UN010042</u> <u>16</u>	<u>3035</u>
Freight forwarder	Party ID	String	O	0..1	A unique identifier of this trade party. Usually, it's a unique registration code or global identifiable code assigned in an ID scheme.	<u>UN010045</u> <u>95</u>	<u>3039</u>
Freight forwarder	Party name text	String	M	1..1	Name of a party.	<u>UN010045</u> <u>98</u>	<u>3036</u>
Freight forwarder	Party platform identifier	String	M	1..1	Code specifying the identity of a party. The unique ID in the eBL platform.		
Freight forwarder	Contact	Object	O	0..n	Party contact including contact ID, name, and department name.	<u>UN010046</u> <u>02</u>	
Contact	Contact ID	String	O	0..1	The unique identifier for this contact. The unique ID in the system or B/L to identify the contact, like the state ID, or other global identifiable ID assigned in an ID scheme.	<u>UN010016</u> <u>41</u>	<u>3413</u>
Contact	Contact name	String	O	0..1	The name, expressed as text, of this contact person.	<u>UN010016</u> <u>42</u>	<u>3412</u>

Object name	Field name	Type	M / O	Occurrence	Description	UNID	UNTDED / ISO 7372
Contact	Department name	String	O	0..1	The name, expressed as text, of the department to which this contact belongs within an organization.	<u>UN010016</u> <u>43</u>	<u>3412</u>
Contact	Contact platform identifier	String	O	0..1	To identify a department or employee ID in the context of the party where has belonged to. The unique ID assigned in the eBL platform.		
Contact	Communication	Object	O	0..1	Including phone, fax, e-mail, postal address and/or reference of the contact.		
Communication	Contact phone	String	O	0..1	A telephone communication for this party. Telephone number, including country and/or city code as required, for voice or data transmission by telephone beyond the border of a country.	<u>UN010045</u> <u>64</u>	<u>3155+314</u> <u>8</u>
Communication	Contact fax	String	O	0..1	Fax communication information for this location party. Communication service involving teletypewriter machines connected by wire or electronic transmission media. Teletypewriter machines are the devices used to send and receive signals and produce hardcopy from them.	<u>UN010045</u> <u>67</u>	<u>3155+314</u> <u>8</u>
Communication	Contact email address	String	O	0..1	The Uniform Resource Identifier (URI), such as a web or an email address, for this universal communication.	<u>UN010045</u> <u>69</u>	<u>3155+314</u> <u>8</u>
Freight forwarder	Postal address	Object	O	0..1	The postal address for this trade party.		
Postal address	Address description	Array of string	O	0..1	To specify the name/address and their related function.	<u>UN010046</u> <u>03</u>	
Postal address	Postcode	String	O	0..1	Code specifying a postal zone or address.	<u>UN010045</u> <u>35</u>	<u>3251</u>
Postal address	Street name	String	O	0..1	Specification of the postal delivery point such as street and number or post office box.	<u>UN010045</u> <u>43</u>	<u>3042</u>

Object name	Field name	Type	M / O	Occurrence	Description	UNID	UNTDDED / ISO 7372
Postal address	City name	String	O	0..1	Name of a city.	<u>UN010045</u> <u>44</u>	<u>3164</u>
Postal address	Country subdivision name	String	O	0..1	Name of a country subdivision.	<u>UN010045</u> <u>49</u>	<u>3228</u>
Postal address	Country code	String	O	0..1	Identification of the name of the country or other geographical entity. Reference to ISO 3166-1.	<u>UN010045</u> <u>46</u>	<u>3207</u>
Postal address	Country name	String	O	0..1	Name of the country or other geographical entity.	<u>UN010045</u> <u>47</u>	<u>3206</u>
Freight forwarder	Party external references	Object	O	0..n	Reference of that party, e.g., USCI and EORI. Consider using the repeatable UN/CCL party identifier structure (ID, identification scheme, identification scheme agency).		
Party external references	Tax authority ID	String	O	0..1	Party identifier for tax authority.	<u>UN010044</u> <u>87</u>	<u>3446</u>
Party external references	Customs ID	String	O	0..1	Party identifier for customs.	<u>UN010045</u> <u>95</u>	
Party external references	Reference type	String	O	0..1	Reference type, it is recommended to use the UNECE code list. The reference may not be a document, for example, a bulk carrier can use this field to identify the B/L related to a voyage charter party. (For UNTDED for associated documents will be made here). 1153 Reference code qualifier, code qualifying a reference. e.g., RF Export reference number, reference number given to an export shipment.	<u>UN010060</u> <u>36</u>	<u>1153</u>
Party external references	Reference number	String	O	0..1	Identifies a reference. Under the circumstance that the voyage charter party needs to be incorporated into the B/L, the date to identify the voyage charter party under which the B/L is issued.	<u>UN010039</u> <u>91</u>	<u>1154</u>

Object name	Field name	Type	M / O	Occurrence	Description	UNID	UNTDED / ISO 7372
Parties	Notify party	Object	O	0..n	The party to be advised by the carrier upon arrival of the goods at the destination port. 3035 Party function code qualifier Code giving specific meaning to a party. NI Notify party (3180) Party to be notified of arrival of goods.	<u>UN010042</u> <u>23</u>	
Notify party	Party ID	String	O	0..1	A unique identifier of this trade party. Usually, it's a unique registration code or global identifiable code assigned in an ID scheme.	<u>UN010045</u> <u>95</u>	<u>3039</u>
Notify party	Party name text	String	M	1..1	Name of a party.	<u>UN010045</u> <u>98</u>	<u>3036</u>
Notify party	Party platform identifier	String	M	1..1	Code specifying the identity of a party. The unique ID in the eBL platform.		
Notify party	Contact	Object	O	0..n	Party contact including contact ID, name, and department name.	<u>UN010046</u> <u>02</u>	
Contact	Contact ID	String	O	0..1	The unique identifier for this contact. The unique ID in the system or B/L to identify the contact, like the state ID, or other global identifiable ID assigned in an ID scheme.	<u>UN010016</u> <u>41</u>	<u>3413</u>
Contact	Contact name	String	O	0..1	The name, expressed as text, of this contact person.	<u>UN010016</u> <u>42</u>	<u>3412</u>
Contact	Department name	String	O	0..1	The name, expressed as text, of the department to which this contact belongs within an organization.	<u>UN010016</u> <u>43</u>	<u>3412</u>
Contact	Contact platform identifier	String	O	0..1	To identify a department or employee ID in the context of the party where has belonged to. The unique ID assigned in the eBL platform.		

Object name	Field name	Type	M / O	Occurrence	Description	UNID	UNTDDED / ISO 7372
Contact	Communication	Object	O	0..1	Including phone, fax, e-mail, postal address and/or reference of the contact.		
Communication	Contact phone	String	O	0..1	A telephone communication for this party. Telephone number, including country and/or city code as required, for voice or data transmission by telephone beyond the border of a country.	<u>UN010045</u> <u>64</u>	<u>3155+314</u> <u>8</u>
Communication	Contact fax	String	O	0..1	Fax communication information for this location party. Communication service involving teletypewriter machines connected by wire or electronic transmission media. Teletypewriter machines are the devices used to send and receive signals and produce hardcopy from them.	<u>UN010045</u> <u>67</u>	<u>3155+314</u> <u>8</u>
Communication	Contact email address	String	O	0..1	The Uniform Resource Identifier (URI), such as a web or an email address, for this universal communication.	<u>UN010045</u> <u>69</u>	<u>3155+314</u> <u>8</u>
Notify party	Postal address	Object	O	0..1	The postal address for this trade party.		
Postal address	Address description	Array of string	O	0..1	To specify the name/address and their related function.	<u>UN010046</u> <u>03</u>	
Postal address	Postcode	String	O	0..1	Code specifying a postal zone or address.	<u>UN010045</u> <u>35</u>	<u>3251</u>
Postal address	Street name	String	O	0..1	Specification of the postal delivery point such as street and number or post office box.	<u>UN010045</u> <u>43</u>	<u>3042</u>
Postal address	City name	String	O	0..1	Name of a city.	<u>UN010045</u> <u>44</u>	<u>3164</u>
Postal address	Country subdivision name	String	O	0..1	Name of a country subdivision.	<u>UN010045</u> <u>49</u>	<u>3228</u>
Postal address	Country code	String	O	0..1	Identification of the name of the country or other geographical entity. Reference to ISO 3166-1.	<u>UN010045</u> <u>46</u>	<u>3207</u>

Object name	Field name	Type	M / O	Occurrence	Description	UNID	UNTDDED / ISO 7372
Postal address	Country name	String	O	0..1	Name of the country or other geographical entity.	<u>UN010045</u> <u>47</u>	<u>3206</u>
Notify party	Party external references	Object	O	0..n	Reference of that party, e.g., USCI and EORI. Consider using the repeatable UN/CCL party identifier structure (ID, identification scheme, identification scheme agency).		
Party external references	Tax authority ID	String	O	0..1	Party identifier for tax authority.	<u>UN010044</u> <u>87</u>	<u>3446</u>
Party external references	Customs ID	String	O	0..1	Party identifier for customs.	<u>UN010045</u> <u>95</u>	
Party external references	Reference type	String	O	0..1	Reference type, it is recommended to use the UNECE code list. The reference may not be a document, for example, a bulk carrier can use this field to identify the B/L related to a voyage charter party. (For UNTDED, associated documents are made here) 1153 Reference code qualifier, code qualifying a reference. e.g., RF Export reference number, reference number given to an export shipment.	<u>UN010060</u> <u>36</u>	<u>1153</u>
Party external references	Reference number	String	O	0..1	Identifies a reference. Under the circumstance that the voyage charter party needs to be incorporated into the B/L, the date to identify the voyage charter party under which the B/L is issued.	<u>UN010039</u> <u>91</u>	<u>1154</u>
Parties	Signed by	Object	M	1..1	The party that issues this B/L which means the first signatory and document authentication, in another word, the first or primary signature that authenticates this exchanged document.	<u>UN010035</u> <u>83</u>	

Object name	Field name	Type	M / O	Occurrence	Description	UNID	UNTDDED / ISO 7372
Signed by	Party ID	String	O	0..1	A unique identifier of this trade party. Usually, it's a unique registration code or global identifiable code assigned in an ID scheme.	<u>UN010045</u> <u>95</u>	<u>3039</u>
Signed by	Party name text	String	M	1..1	Name of a party.	<u>UN010045</u> <u>98</u>	<u>3036</u>
Signed by	Party platform identifier	String	M	1..1	Code specifying the identity of a party. The unique ID in the eBL platform.		
Signed by	Signatory image binary object	Binary	O	0..1	The signatory image expressed as a binary object for this document authentication.	<u>UN010126</u> <u>87</u>	
Signed by	Contact	Object	O	0..n	Party contact including contact ID, name, and department name.	<u>UN010046</u> <u>02</u>	
Contact	Contact ID	String	O	0..1	The unique identifier for this contact. The unique ID in the system or B/L to identify the contact, like the state ID, or other global identifiable ID assigned in an ID scheme.	<u>UN010016</u> <u>41</u>	<u>3413</u>
Contact	Contact name	String	O	0..1	The name, expressed as text, of this contact person.	<u>UN010016</u> <u>42</u>	<u>3412</u>
Contact	Department name	String	O	0..1	The name, expressed as text, of the department to which this contact belongs within an organization.	<u>UN010016</u> <u>43</u>	<u>3412</u>
Contact	Contact platform identifier	String	O	0..1	To identify a department or employee ID in the context of the party where has belonged to. The unique ID assigned in the eBL platform.		
Contact	Communication	Object	O	0..1	Including phone, fax, e-mail, postal address and/or reference of the contact.		
Communication	Contact phone	String	O	0..1	A telephone communication for this party. Telephone number, including country and/or city code as required,	<u>UN010045</u> <u>64</u>	<u>3155+314</u> <u>8</u>

Object name	Field name	Type	M / O	Occurrence	Description	UNID	UNTDDED / ISO 7372
					for voice or data transmission by telephone beyond the border of a country.		
Communication	Contact fax	String	O	0..1	Fax communication information for this location party. Communication service involving teletypewriter machines connected by wire or electronic transmission media. Teletypewriter machines are the devices used to send and receive signals and produce hardcopy from them.	<u>UN010045</u> <u>67</u>	<u>3155+314</u> <u>8</u>
Communication	Contact email address	String	O	0..1	The uniform resource identifier (URI), such as a web or an email address, for this universal communication.	<u>UN010045</u> <u>69</u>	<u>3155+314</u> <u>8</u>
Signed by	Postal address	Object	O	0..1	The postal address for this trade party.		
Postal address	Address description	Array of string	O	0..1	To specify the name/address and their related function.	<u>UN010046</u> <u>03</u>	
Postal address	Postcode	String	O	0..1	Code specifying a postal zone or address.	<u>UN010045</u> <u>35</u>	<u>3251</u>
Postal address	Street name	String	O	0..1	Specification of the postal delivery point such as street and number or post office box.	<u>UN010045</u> <u>43</u>	<u>3042</u>
Postal address	City name	String	O	0..1	Name of a city.	<u>UN010045</u> <u>44</u>	<u>3164</u>
Postal address	Country subdivision name	String	O	0..1	Name of a country subdivision.	<u>UN010045</u> <u>49</u>	<u>3228</u>
Postal address	Country code	String	O	0..1	Identification of the name of the country or other geographical entity. Reference to ISO 3166-1.	<u>UN010045</u> <u>46</u>	<u>3207</u>
Postal address	Country name	String	O	0..1	Name of the country or other geographical entity.	<u>UN010045</u> <u>47</u>	<u>3206</u>

Object name	Field name	Type	M / O	Occurrence	Description	UNID	UNTDDED / ISO 7372
Signed by	Party external references	Object	O	0..n	Reference of the party, e.g., USCI and EORI. Consider using the repeatable UN/CCL party identifier structure (ID, identification scheme, identification scheme agency).		
Party external references	Tax authority ID	String	O	0..1	Party identifier for tax authority.	<u>UN010044</u> <u>87</u>	<u>3446</u>
Party external references	Customs ID	String	O	0..1	Party identifier for customs.	<u>UN010045</u> <u>95</u>	
Party external references	Reference type	String	O	0..1	Reference type, it is recommended to use the UNECE code list. The reference may not be a document, for example, a bulk carrier can use this field to identify the B/L related to a voyage charter party. (For UNTDED for associated documents shall be made here). 1153 Reference code qualifier, code qualifying a reference. e.g., RF Export reference number, reference number given to an export shipment.	<u>UN010060</u> <u>36</u>	<u>1153</u>
Party external references	Reference number	String	O	0..1	Identifies a reference. Under the circumstance that the voyage charter party needs to be incorporated into the B/L, the date to identify the voyage charter party under which the B/L is issued.	<u>UN010039</u> <u>91</u>	<u>1154</u>

Table 3 — External references (B3)

Object name	Field name	Type	M / O	Occurrence	Description	UNID	UNTDDED / ISO 7372
External references		Object	O	0..n	External reference numbers are used to record the reference numbers which are put on the B/L.	-	-
External references	Reference type	String	O	0..1	Reference type, it is recommended to use UNECE code list. The reference may not be a document, for example, a bulk carrier can use this field to identify the B/L related to a voyage charter party. (For UNTDED, associated documents shall be made here) 1153 Reference code qualifier, code qualifying a reference. e.g., RF Export reference number, reference number given to an export shipment.	<u>UN010060</u> <u>36</u>	<u>1153</u>
External references	Reference number	String	O	0..1	Identifies a reference. Under the circumstance that the voyage charter party needs to be incorporated into the B/L, the date to identify the voyage charter party under which the B/L is issued.	<u>UN010039</u> <u>91</u>	<u>1154</u>

Table 4 — Transportation information (B4)

Object name	Field name	Type	M/O	Occurrence	Description	UNID	UNTDDED / ISO 7372
Transportation information		Object	M	1..1	Transportation mode (MMT or not) + voyage information including transportation stage, means of the transportation stage, vessel and voyage of the main carriage + route (locations) + transportation requirement including traffic term, contract movement type and the special handling requirement to fulfil the service by the carrier.		
Transportation information	Whether multimodal transport	Boolean	O	0..1	<p>Specifying the mode of transport. Indicate if the transportation mode is combined or not, or in another word whether it's MMT. If it's MMT, at least one of place of receipt (POR) and place of delivery should be mandatory which also means that there is transportation before or after the main sea carriage at least; if not an MMT, both place of receipt (POR) and place of delivery should be optional.</p> <p>User can also choose to use code from UNECE Recommendation 19 or 8067 to describe it, below are some examples:</p> <p>1 Maritime transport, transport of goods and/or persons is by sea.</p> <p>6 Multimodal transport, method to convey goods and/or persons is by multimodal transport.</p>	<u>UN000020</u> <u>38</u>	<u>8067</u>
Transportation information	Voyage	Object	M	1..1	B/L voyage. Current UN/CEFACT voyage class.	<u>UN010042</u> <u>61</u>	

Object name	Field name	Type	M/O	Occurrence	Description	UNID	UNTDED / ISO 7372
Voyage	Transport stage	String	M	1..1	<p>8051 qualifying a specific stage of transport. If it's main carriage, the VVD is mandatory. Below are some of the examples from 8051 code list.</p> <p>10 Pre-carriage transport: Transport by which the goods are moved prior to their main carriage transport.</p> <p>20 Main-carriage transport: The primary stage in the movement of cargo from the point of origin to the intended destination.</p> <p>30 On-carriage transport: Transport by which the goods are moved after the main carriage transport.</p>	<u>UN000020</u> <u>37</u>	<u>8051</u>
Voyage	Transport mode code	String	O	0..1	A code specifying a type of transport mode.	<u>UN000013</u> <u>28</u>	
Voyage	Transport means	String	M	1..1	<p>The means used for this transport stage, such as main carriage might be bulk ship, tanker ship, Ro-Ro ship, or container ship, etc. User can choose a code to specify the transport means from UNTDED 8179 or UNECE Recommendation 28. Below are some examples.</p> <p>52 Bulk carrier, vessel designed to carry bulk cargo.</p> <p>51-1 Full container ship/cellular vessel, vessel designed to carry containers only.</p> <p>53 Tanker, vessel solely equipped with tanks to carry cargo.</p> <p>3-7 Truck container, automotive vehicle designed for carrying containers.</p>	<u>UN000013</u> <u>24</u>	<u>8179</u>
Voyage	Vessel voyage details	Object	O	1..n	To specify the vessel and voyage information including Vessel identifier, name, IMO number, call sign, vessel nationality, voyage number, and for container liners, there are usually direction added to the voyage number.		

Object name	Field name	Type	M/O	Occurrence	Description	UNID	UNTDDED / ISO 7372
Vessel voyage details	Vessel	Object	M	1..1	To specify the vessel information including vessel identifier, name, IMO number, call sign, vessel nationality.	UN010038 61	
Vessel	Vessel name	String	M	1..1	Carrier defined vessel name.	<u>UN010038</u> <u>23</u>	<u>8212</u>
Vessel	Vessel IMO number	String	O	0..1	Vessel IMO number.	<u>UN010155</u> <u>89,</u> <u>UN010038</u> <u>22</u>	<u>8213</u>
Vessel	Call sign	String	O	0..1	A call sign identifier for the transport means.	<u>UN010155</u> <u>67,</u> <u>UN010038</u> <u>22</u>	<u>8213</u>
Vessel	Vessel nationality	String	O	0..1	Registration country. The flag state of a merchant vessel is the jurisdiction under whose laws the vessel is registered or licensed, and is deemed the nationality of the vessel. Use ISO 3166-1 alpha two country code, also can refer to UNECE Recommendation 3, an2.	<u>UN010025</u> <u>53</u>	<u>8453</u>
Vessel voyage details	Voyage information	Object	M	1..1	Information for the voyage, like voyage number, and for container liners, there are usually direction added to the voyage number.		
Voyage information	Voyage number	String	M	1..1	Carrier voyage number, unique reference given by the carrier to a certain journey or departure of a means of transport.	<u>UN010038</u> <u>41</u>	<u>8028</u>
Voyage information	Voyage direction	String	O	0..1	Voyage direction, specifying the direction of transport, — EB: East bound	<u>UN010038</u> <u>48</u>	<u>8101</u>

Object name	Field name	Type	M/O	Occurrence	Description	UNID	UNTDDED / ISO 7372
					<ul style="list-style-type: none"> — NB: North bound — SB: South bound — WB: West bound 		
Transportation information	Locations	Object	M	1..1			
Locations	Place of receipt (POR)	Object	M	1..1	3302 Name of the carrier acceptance location at which goods are to be or have been taken over for carriage.	<u>UN010042</u> <u>35</u>	<u>3302</u>
Place of receipt (POR)	Location code	String	O	0..1	Location identifier of terminal in port, or smaller location, such as terminal depot, rail ramp, e.g., SMDG Recommend to use UNECE Recommendation 16: UNLOCODE.	<u>UN010036</u> <u>80</u>	<u>3225</u>
Place of receipt (POR)	Location name	String	M	1..1	Name of the location. e.g., Shanghai.	<u>UN010036</u> <u>81</u>	<u>3224</u>
Locations	Port of loading (POL)	Object	M	1..1	3334 (3230) First port of loading where the goods are loaded onto the ocean vessel for main carriage.	<u>UN010042</u> <u>38</u>	<u>3334</u> <u>(3230)</u>
Port of loading (POL)	Location code	String	O	0..1	Location identifier of terminal in port, or smaller location, such as terminal depot, rail ramp, e.g., SMDG Recommend to use UNECE Recommendation 16: UNLOCODE.	<u>UN010036</u> <u>80</u>	<u>3225</u>
Port of loading (POL)	Location name	String	M	1..1	Name of the location. e.g., Shanghai.	<u>UN010036</u> <u>81</u>	<u>3224</u>

Object name	Field name	Type	M/O	Occurrence	Description	UNID	UNTDDED / ISO 7372
Locations	Port of discharge (POD)	Object	M	1..1	Last port of discharge where the goods are discharged from the ocean vessel and which is also the last port of the main carriage.	<u>UN010042</u> <u>39</u>	<u>3392</u>
Port of discharge (POD)	Location code	String	O	0..1	Location identifier of terminal in port, or smaller location, such as terminal depot, rail ramp, e.g., SMDG Recommend to use UNECE Recommendation 16: UNLOCODE.	<u>UN010036</u> <u>80</u>	<u>3225</u>
Port of discharge (POD)	Location name	String	M	1..1	Name of the location. e.g., Shanghai.	<u>UN010036</u> <u>81</u>	<u>3224</u>
Locations	Place of delivery	Object	M	1..1	Name of consignee receipt location at which goods are to be or have been delivered to consignee	<u>UN010042</u> <u>51</u> (event), <u>UN010048</u> <u>03</u> (location)	<u>3246</u>
Place of delivery	Location code	String	O	0..1	Location identifier of terminal in port, or smaller location, such as terminal depot, rail ramp, e.g., SMDG Recommend to use UNECE Recommendation 16: UNLOCODE.	<u>UN010036</u> <u>80</u>	<u>3225</u>
Place of delivery	Location name	String	M	1..1	Name of the location. e.g., Shanghai.	<u>UN010036</u> <u>81</u>	<u>3224</u>
Transportation information	Transportation service requirement	Object	M	1..1	To specify the traffic term required by the shipper, a contract movement type of this transport service and the special handling requirement such as on deck or ventilation requirement for a reefer container.		

Object name	Field name	Type	M/O	Occurrence	Description	UNID	UNTDED / ISO 7372
Transportation service requirement	Traffic term	String	M	1..1	<p>Haulage instruction for this shipment, like CY-CY, DR-DR or CY-DR which means the responsibility scope of the carrier to fulfil this transportation service. User can select the relevant code from UNTDED 4065, below are some of the examples.</p> <p>27 Door-to-door The carrier is responsible for the intermodal carriage of cargo including both the pre-carriage and the on-carriage.</p> <p>28 Door-to-pier The carrier is responsible for the intermodal carriage of cargo including the pre-carriage, but excluding the on-carriage.</p> <p>29 Pier-to-door The carrier is responsible for the intermodal carriage of cargo including the on-carriage, but excluding the pre-carriage.</p> <p>30 Pier-to-pier The carrier of intermodal cargo is only responsible for the main carriage.</p>	<u>UN010048</u> <u>42</u>	<u>4065</u>
Transportation service requirement	Contract movement type	String	O	0..1	<p>Specifying a contract movement type of this transport service. For example, LCL or FCL defines the movement of cargo packed in and unpacked from containers by the carrier on behalf of the shipper/consignee. 'LCL' means less than container load. User can choose code from UNTDED 8335, some of codes listed as the example.</p>	<u>UN010151</u> <u>03</u>	<u>8335</u>

Object name	Field name	Type	M/O	Occurrence	Description	UNID	UNTDDED / ISO 7372
					<p>1 Breakbulk Defines the movement of general cargo not carried in ISO standard containers.</p> <p>2 LCL/LCL Defines the movement of cargo packed in and unpacked from containers by the carrier on behalf of the shipper/consignee. 'LCL' means less than container load.</p> <p>3 FCL/FCL Defines the movement of cargo packed by the shipper or shipper's agent and unpacked by the consignee or consignee's agent. 'FCL' means full container load.</p> <p>4 FCL/LCL Defines the movement of cargo packed by the shipper or shipper's agent and unpacked by the carrier. 'FCL' means full container load. 'LCL' means less than container load.</p> <p>5 LCL/FCL Defines the movement of cargo packed by the carrier and unpacked by the consignee or consignee's agent. 'LCL' means less than container load. 'FCL' means full load.</p> <p>6 Consolidation a movement of multiple shipments to a single destination.</p>		
Transportation service requirement	Handling requirement	String	O	0..1	Identify instructions on where or how specified packages or containers are to be loaded on a means of transport, like on deck, or the ventilation requirement of a reefer container or other special operation request to the cargo.	<u>UN010042</u> <u>04</u>	<u>4080</u>

Table 5 — Declared value of goods (B5)

Object name	Field name	Type	M / O	Occurrence	Description	UNID	UNTDDED / ISO 7372
Declared value of goods		Object	O	0..1	Value of goods declared by the shipper or his agent solely for the purpose of varying the carrier's level of liability from that provided in the contract of carriage, in case of loss or damage to goods or delayed delivery.	<u>UN010041</u> <u>14</u>	<u>5036</u>
Declared value of goods	Declared value of goods	String	O	0..1	Value of goods declared by the shipper or his agent solely for the purpose of varying the carrier's level of liability from that provided in the contract of carriage, in case of loss or damage to goods or delayed delivery.	<u>UN010041</u> <u>14</u>	<u>5036</u>

Table 6 — General goods description information (B6)

Object name	Field name	Type	M / O	Occurrence	Description	UNID	UNTDDED / ISO 7372
General goods description information		Object	M	1..1	To specify the general total gross weight, net weight, volume information, and summary description, origin for goods at the B/L level.		
General goods description information	Origin of goods	Object	O	0..1	Name of the country in which the goods have been produced or manufactured. If there are different multiple origins under same B/L, user can choose goods details column to specify it for each goods item and then leave this B/L level origin of goods column as blank because the space of this column at the B/L body is very limited.	<u>UN010042</u> <u>68</u>	<u>3238+323</u> <u>9</u>
Origin of goods	Location code	String	O	0..1	Location identifier of terminal in port, or smaller location, such as terminal depot, rail ramp, e.g., SMDG Recommend to use UNECE Recommendation 16: UNLOCODE.	<u>UN010036</u> <u>80</u>	<u>3225</u>
Origin of goods	Location name	String	M	1..1	Name of the location. e.g., Shanghai.	<u>UN010036</u> <u>81</u>	<u>3224</u>
General goods description information	Summary goods description	String	O	0..1	Summary of goods description.	<u>UN010042</u> <u>01</u>	<u>7004</u>
General goods description information	Containerization indicator	String	O	0..1	The indication of whether or not this supply chain consignment is to be transported in a container or containers.	<u>UN010041</u> <u>95</u>	<u>4140</u>

Object name	Field name	Type	M / O	Occurrence	Description	UNID	UNTDDED / ISO 7372
General goods description information	Total gross weight	Object	M	1..1	Total gross weight indicated in B/L.	<u>UN010041</u> <u>73</u>	<u>6012</u>
Total gross weight	Measurement number	Number	M	1..1	Value of the measured unit.		<u>6314</u>
Total gross weight	Measurement unit	String	M	1..1	Provides three character alphabetic and alphanumeric codes for representing units of measurement for length, area, volume/capacity, mass (weight), temperature, and other quantities. See UNECE Recommendation 20, common code (KGM, TNE for weight; FTQ, LTR, MMQ, MTQ for volume).		<u>6411</u>
General goods description information	Total net weight	Object	M	1..1	Total net weight indicated in B/L.	<u>UN010041</u> <u>74</u>	<u>6014</u>
Total net weight	Measurement number	Number	M	1..1	Value of the measured unit.		<u>6314</u>
Total net weight	Measurement unit	String	M	1..1	Provides three character alphabetic and alphanumeric codes for representing units of measurement for length, area, volume/capacity, mass (weight), temperature, and other quantities. See UNECE Recommendation 20, common code (KGM, TNE for weight; FTQ, LTR, MMQ, MTQ for volume).		<u>6411</u>
General goods	Total volume measure	Object	M	1..1	Total volume measure indicated in B/L, count total of the volume of goods item, normally is arrived at by multiplying the width, height, and length of the packed	<u>UN010041</u> <u>75</u>	<u>6422</u>

Object name	Field name	Type	M / O	Occurrence	Description	UNID	UNTDED / ISO 7372
description information					cargo, can be expressed in cubic meter or cubic feet, as provided by the shipper.		
Total volume measure	Measurement number	Number	M	1..1	Value of the measured unit.		<u>6314</u>
Total volume measure	Measurement unit	String	M	1..1	Provides three character alphabetic and alphanumeric codes for representing units of measurement for length, area, volume/capacity, mass (weight), temperature, and other quantities. See UNECE Recommendation 20, common code. (KGM, TNE for weight; FTQ, LTR, MMQ, MTQ for volume)		<u>6411</u>
General goods description information	Total number of containers	String	O	0..1	The total transport equipment quantity under the B/L.	<u>UN010041</u> <u>98</u>	<u>8046</u>
General goods description information	Total number of packages	Object	O	0..1	Count of total number of packages in B/L.	<u>UN000018</u> <u>00</u>	<u>7370</u>
Total number of packages	Number of packages	Number	M	1..1	Number of individual parts of a shipment either unpacked, or packed in such a way that they cannot be divided without first undoing the packing.	<u>UN010036</u> <u>90</u>	<u>7224</u>
Total number of packages	Package type code	Number	M	1..1	Code specifying the type of package. See UNECE Recommendation 21 (See Vol. II of UNTDED).	<u>UN010036</u> <u>97</u>	<u>7065</u>

Table 7 — Goods item details (B7)

Object name	Field name	Type	M /O	Occurrence	Description	UNID	UNTDDED / ISO 7372
Goods item details		Object	M	1..n	To specify the marks and numbers, gross weight, net weight, volume, description, origin, temperature and/or other special information as well as loading equipment (container) for each goods item.		
Goods item details	Goods type	String	M	1..1	<p>Cargo nature identification of the whole shipment, user can select the code for cargo type definition from 7085 Cargo type classification code. Note that in 7085 Nature of cargo, the user can not find awkward cargo type, while in 7085 Cargo type classification, more can be found)</p> <p>Quoted some codes from 7085 as the examples.</p> <p>9 Containerized cargo stowed or to be stowed in a container.</p> <p>10 Breakbulk Non-containerized cargo stowed in vessels' holds.</p> <p>11 Hazardous cargo (Also naming dangerous cargo, for this type, there should be more information provided at the description of goods column) cargo with dangerous properties, according to appropriate dangerous goods regulations.</p> <p>12 General cargo, cargo of a general nature, not otherwise specified.</p> <p>14 Temperature controlled cargo (for this kind of cargo, the user should use temperature to specify the requirements), cargo transported under specified temperature conditions.</p>	<u>UN000017</u> <u>09</u>	<u>7085</u>

Object name	Field name	Type	M/O	Occurrence	Description	UNID	UNTDDED / ISO 7372
					20 Out of gauge (when there is such a type of cargo, it means there should be a special measurement description for the cargo in the goods description column, the data structure could refer to measurement). This refers to cargo with at least one non-standard dimension.		
Goods item details	Marks & Nos.	Array of string	M	1..n	Marks and numbers identifying individual packages, namely shipping marks.	<u>UN000019</u> <u>23</u>	<u>7102</u>
Goods item details	Gross weight	Object	M	1..1	Total gross goods weight indicated in B/L includes packaging but excludes any transport equipment.	<u>UN010041</u> <u>21</u>	<u>6292</u>
Gross weight	Measurement number	Number	M	1..1	Value of the measured unit.		<u>6314</u>
Gross weight	Measurement unit	String	M	1..1	Provides three character alphabetic and alphanumeric codes for representing units of measurement for length, area, volume/capacity, mass (weight), temperature, and other quantities. Note: See UNECE Recommendation 20, common code. (KGM, TNE for weight; FTQ, LTR, MMQ, MTQ for volume)		<u>6411</u>
Goods item details	Net weight	Object	M	1..1	Total net weight of the goods indicated in B/L excludes all packages.	<u>UN010041</u> <u>22</u>	<u>6016</u>
Net weight	Measurement number	Number	M	1..1	Value of the measured unit.		<u>6314</u>
Net weight	Measurement unit	String	M	1..1	Provides three character alphabetic and alphanumeric codes for representing units of measurement for length, area, volume/capacity, mass (weight), temperature, and other quantities.		<u>6411</u>

Object name	Field name	Type	M/O	Occurrence	Description	UNID	UNTDED / ISO 7372
					Note: See UNECE Recommendation 20, common code. (KGM, TNE for weight; FTQ, LTR, MMQ, MTQ for volume)		
Goods item details	Volume measure	Object	M	1..1	Volume normally is arrived at by multiplying the width, height, and length of the packed cargo, can be expressed in cubic meter or cubic feet, as provided by the shipper.	<u>UN010041</u> <u>24</u>	<u>6322</u>
Volume measure	Measurement number	Number	M	1..1	Value of the measured unit.		<u>6314</u>
Volume measure	Measurement unit	String	M	1..1	Provides three character alphabetic and alphanumeric codes for representing units of measurement for length, area, volume/capacity, mass (weight), temperature, and other quantities. See UNECE Recommendation 20, common code. (KGM, TNE for weight; FTQ, LTR, MMQ, MTQ for volume)		<u>6411</u>
Goods item details	Number and type of package	Object	M	1..3	Indicator number of individual packages package type UNECE Recommendation 21.	<u>UN010036</u> <u>90</u>	<u>7224</u>
Number and type of package	Number of packages	Number	M	1..1	Number of individual parts of a shipment either unpacked, or packed in such a way that they cannot be divided without first undoing the packing.	<u>UN010036</u> <u>90</u>	<u>7224</u>
Number and type of package	Package type code	Number	M	1..1	Code specifying the type of package. See UNECE Recommendation 21 (See Vol. II of UNTDED).	<u>UN010036</u> <u>97</u>	<u>7065</u>
Number and type of package	Level code	String	O	0..1	A code specifying the level of this package.	<u>UN000020</u> <u>74</u>	<u>7075</u>

Object name	Field name	Type	M/O	Occurrence	Description	UNID	UNTDDED / ISO 7372
Goods item details	HS code	String	O	0..1	UN Harmonized Commodity Description and Code Systems (HS). 7357 Commodity/rate identification:Code identifying goods for Customs, transport or statistical purposes (generic term). User or association defined code. Can be used in combination with 1131/3055. [six digits usually]	<u>UN010041</u> <u>06</u>	<u>7357</u>
Goods item details	Origin of goods	Object	O	0..1	Name of the country in which the goods have been produced or manufactured.	<u>UN010041</u> <u>39</u>	<u>3208</u>
Origin of goods	Location code	String	O	0..1	Location identifier of terminal in port, or smaller location, such as terminal depot, rail ramp, e.g., SMDG Recommend to use UNECE Recommendation 16: UNLOCODE.	<u>UN010036</u> <u>80</u>	<u>3225</u>
Origin of goods	Location name	String	M	1..1	Name of the location. e.g., Shanghai.	<u>UN010036</u> <u>81</u>	<u>3224</u>
Goods item details	Description of goods	String	M	1..1	Plain language description of the nature of a goods item sufficient to identify it for customs, statistical or transport purposes. If Goods type = 11 Hazardous cargo) Proper shipping name, supplemented as necessary with the correct technical name, is one by which a dangerous substance or article may be correctly identified or which is sufficiently informative to permit identification by reference to generally available literature. Usually, IMO class, UN number and emergency contact are also required besides the general goods specification. If a	<u>UN010047</u> <u>59</u>	<u>7002</u>

Object name	Field name	Type	M /O	Occurrence	Description	UNID	UNTDDED / ISO 7372
					flashing point needs to be specified for the cargo, users can refer to the structure of temperature.		
Goods item details	Containerized goods details	Object	0	0..n	To specify container information when goods is transported in a container, the above data elements should be specified for each container in the user's system. This ensures clear and sorted goods details for each container. While B/L layout requirements typically mandate that package numbers, total packages and FCL/LCL indicators are shown alongside the container / seal number, other details are printed in individual columns on the B/L body, such as Marks & Nos, number of packages, gross weight and volume measurement.		
Containerized goods details	Container number	String	M	1..1	To identify a piece of transport equipment e.g., container or unit load device. For semantic, user can refer to 8260. The container number is registered with the Bureau International des Containers et du Transport Intermodal (BIC) – Container Identification Number (2019).	<u>UN010037</u> <u>58</u>	<u>8260</u>
Containerized goods details	Container size type	String	M	1..1	8155 Equipment size and type description code, specifying the size and type of equipment. See ISO 6346 for seagoing containers.	<u>UN010037</u> <u>68</u>	<u>8155</u>
Containerized goods details	Container supplier	String	M	1..1	Define the party that supplied the container to the shipper 8077 Equipment supplier, coded: to indicate the party that is the supplier of the equipment. 1 Shipper supplied The transport equipment is supplied by the shipper. 2 Carrier supplied The transport equipment is supplied by the carrier.	<u>UN010037</u> <u>70</u>	<u>8077</u>

Object name	Field name	Type	M /O	Occurrence	Description	UNID	UNTDDED / ISO 7372
					<p>3 Consolidator supplied The equipment is supplied by the consolidator.</p> <p>4 Deconsolidator supplied The equipment is supplied by the deconsolidator.</p> <p>5 Third party supplied The equipment is supplied by a third party.</p>		
Containerized goods details	Is partial	Boolean	O	0..1	An identifier for when a container has more than one B/L, namely transport equipment split goods indicator.		
Containerized goods details	Seals	Object	O	0..n	9308 Transport equipment, seals of container, seal identifier, the identification number of a seal affixed to a piece of transport equipment. Users usually need to select the seal issuing party code from 9303 to store it together with the seal number, if the container is sealed by the shipper; meanwhile, a relevant declaration about the shipper's seal will be printed in the column of terms on the B/L.		
Seals	Seal number	String	M	1..1	An identifier for the seal.	<u>UN000019</u> <u>16</u>	<u>9308</u>
Seals	Sealing party	String	O	0..1	<p>Party who supplied the seal 9303 Sealing party, coded, for example, CA Carrier</p> <p>Party undertaking or arranging transport of goods between named points. CU Customs Self-explanatory. SH Shipper</p>	<u>UN010037</u> <u>18</u>	<u>9303</u>

Object name	Field name	Type	M/O	Occurrence	Description	UNID	UNTDDED / ISO 7372
					Party which, by contract with a carrier, consigns or sends goods with the carrier, or has them conveyed by him.		
Containerized goods details	Tare weight	Object	O	0..1	Weight (mass) of transport means including permanent equipment but excluding goods and loose accessories. For example, the container tare weight.	<u>UN010037</u> <u>61</u>	<u>6156</u>
Tare weight	Measurement number	Number	M	1..1	Value of the measured unit.		<u>6314</u>
Tare weight	Measurement unit	String	M	1..1	Provides three character alphabetic and alphanumeric codes for representing units of measurement for length, area, volume/capacity, mass (weight), temperature, and other quantities. Note: See UNECE Recommendation 20, common code. (KGM, TNE for weight; FTQ, LTR, MMQ, MTQ for volume)		<u>6411</u>
Containerized goods details	Gross weight	Object	M	1..1	Total gross goods weight indicated in B/L includes packaging but excludes any transport equipment.	<u>UN010041</u> <u>21</u>	<u>6292</u>
Gross weight	Measurement number	Number	M	1..1	Value of the measured unit.		<u>6314</u>
Gross weight	Measurement unit	String	M	1..1	Provides three character alphabetic and alphanumeric codes for representing units of measurement for length, area, volume/capacity, mass (weight), temperature, and other quantities. Note: See UNECE Recommendation 20, common code. (KGM, TNE for weight; FTQ, LTR, MMQ, MTQ for volume)		<u>6411</u>

Object name	Field name	Type	M/O	Occurrence	Description	UNID	UNTDDED / ISO 7372
Goods item details	Hazardous goods details	Object	O	0..n			
Hazardous goods details	UN number	String	M	1..1	UN number - a four-digit number that identifies dangerous goods, hazardous substances and article (IMDG code required, e.g., UN3171) 7124 UNDG number Unique serial number assigned within the United Nations to substances and articles contained in a list of the dangerous goods most commonly carried.	<u>UN010047</u> <u>63</u>	<u>7124</u>
Hazardous goods details	IMO class	String	M	1..1	IMO class (IMDG code required, e.g., 9) 8078 Hazard substance/item/page number Number giving additional hazard code classification of a goods item within the applicable dangerous goods regulation.	<u>UN010047</u> <u>80</u>	<u>8351</u>
Hazardous goods details	Proper shipping name	String	M	1..1	Proper shipping goods name (IMDG code required, e.g., Battery-powered vehicle) 4451 Text subject code qualifier: Code specifying the subject of the text. AAD Dangerous goods, technical name Proper shipping name, supplemented as necessary with the correct technical name, by which a dangerous substance or article may be correctly identified or which is sufficiently informative to permit identification by reference to generally available literature.	<u>UN010062</u> <u>07</u>	
Hazardous goods details	Technical name	String	O	0..1		<u>UN010047</u> <u>67</u>	<u>7254</u>

Object name	Field name	Type	M/O	Occurrence	Description	UNID	UNTDED / ISO 7372
Hazardous goods details	Flash point	String	O	0..1	Flash point temperature of the goods (IMDG code required) 7088 Dangerous goods flashpoint Lowest temperature, in the case of dangerous goods, at which vapour from an inflammable liquid forms an ignitable mixture with air.	<u>UN010038</u> <u>92</u>	<u>7088</u>
Hazardous goods details	Packing group	String	O	0..1	IMDG Segregation group code.	<u>UN010047</u> <u>74</u>	<u>8339</u>
Hazardous goods details	Emergency contacts	String	M	0..1	Emergency contacts for transport 3139 Contact function code: Code specifying the function of a contact (e.g., department or person). HE Emergency dangerous goods contact Party who is to be contacted to intervene in case of emergency.	<u>UN010016</u> <u>42</u>	<u>3058</u>
Goods item details	Temperature controlled goods details	Object	O	0..1	Temperature information to specify the temperature setting, refer to the structure of measurement to specify the setting requirement.	<u>UN010047</u> <u>47</u>	<u>6246</u>
Temperature controlled goods details	Temperature	Object	O	0..1			
Temperature	Temperature qualifier	Number	O	0..1	Temperature qualifier, to specify the temperature requirement, below are some examples. 2 Transport temperature The temperature at which cargo is to be kept while it is under transport.	UN000008 32.	6245

Object name	Field name	Type	M/O	Occurrence	Description	UNID	UNTDDED / ISO 7372
					5 Transport control temperature The maximum temperature at which certain products can be safely transported.		
Temperature	Temperature number	Number	M	1..1	Temperature setting temperature value in degrees Celsius (e.g., 008, 020).	UN00000741	6246
Temperature	Temperature unit	String	M	1..1	Measurement unit code, Measurement unit code like degree celsius, degree fahrenheit See UNECE Recommendation 20, common code. (CEL, FAH)		6411
Temperature controlled goods details	Humidity	String	O	0..1	The measurement of the moisture in the air, measured as a percentage.	UN01008431	6004
Temperature controlled goods details	Ventilation	String	O	0..1	Ventilation handling, expressed as text, namely air flow measure.	UN01002471	
Goods item details	Out of gauge goods details	Object	O	0..n	Dimensions.		
Out of gauge goods details	Height	Object	O	0..1			
Height	Height value	Number	M	1..1	To specify the value of a height dimension.	UN00000515	6008
Height	Height unit	String	M	1..1	Code qualifying the type of the dimension.		6145

Object name	Field name	Type	M /O	Occurrence	Description	UNID	UNTDDED /ISO 7372
Out of gauge goods details	Length	Object	O	0..1			
Length	Length value	Number	M	1..1	To specify the value of a length dimension.	UN000005 14	6168
Length	Length unit	String	M	1..1	Code qualifying the type of the dimension.		6145
Out of gauge goods details	Width	Object	O	0..1			
Width	Width value	Number	M	1..1	To specify the value of a width dimension.	UN000005 13	6140
Width	Width unit	String	M	1..1	Code qualifying the type of the dimension.		6145

Table 8 — Freight & charges (B8)

Object name	Field name	Type	M / O	Occurrence	Description	UNID	UNTDDED / ISO 7372
Freight & charges		Object	O	0..1	5290 as the reference of the semantic, costs incurred by the shipper in moving goods, by whatever means, from one place to another under the terms of the contract of carriage. In addition to transport costs, this may include such elements as packing, documentation, loading, unloading, and insurance (to the extent that they relate to the freight cost).		
Freight & charges	Total amount	Object	O	0..1	5290 as the reference of the semantic, costs incurred by the shipper in moving goods, by whatever means, from one place to another under the terms of the contract of carriage. In addition to transport costs, this may include such elements as packing, documentation, loading, unloading, and insurance (to the extent that they relate to the freight cost).	<u>UN010041</u> <u>82</u>	<u>5290</u>
Total amount	Currency code	String	O	0..1	Payment currency, recommend to use 6345 currency identification code specifying a monetary unit.		<u>6345</u>
Total amount	Currency name	String	M	1..1	Payment currency name.		
Total amount	Value	Number	M	1..1	To specify the value of a monetary amount.		<u>5004</u>
Total amount	Exchange rate	Number	O	0..1	5402 Rate of exchange: The rate at which one specified currency is expressed in another specified currency, namely conversion rate.		<u>5402</u>
Freight & charges	Freight & charges item details	Object	O	0..n			

Object name	Field name	Type	M / O	Occurrence	Description	UNID	UNTDDED / ISO 7372
Freight & charges item details	Charge item description	String	O	0..1	8022 Charge text, namely applicable service charge. It is plain language statement describing freight and other charges, usually defined by the carrier, some are industry-standard, such as GRI (abbreviation of General Rate of Increase) and DND (abbreviation of Demurrage and Detention). Users can also choose to select the charge item code from UNECE Recommendation 23.	<u>UN010037</u> <u>23 +</u> <u>UN010037</u> <u>22</u>	<u>8022 +</u> <u>8023</u>
Freight & charges item details	Payment arrangement type	String	M	1..1	4237 specifying the arrangements for a payment, prepaid/collect indicator, coded Code indicating whether freight item amount is prepaid or to be collected. Below are code examples. C Collect, charges are (to be) collected from the consignee at the destination. P Prepaid, charges are (to be) prepaid before the transport actually leaves.	<u>UN000005</u> <u>45</u>	<u>4237</u>
Freight & charges item details	Rate (Unit price)	Number	O	0..1	To specify the rate per unit specified in the unit price basis.	<u>UN000016</u> <u>74</u>	<u>5420</u>
Freight & charges item details	Unit price basis	Number	O	0..1	Unit price basis: Basis quantity on which the unit price/rate applies.	<u>UN000004</u> <u>26</u>	<u>5284</u>
Freight & charges item details	Calculation unit	String	O	0..1	Calculate method/unit for the payment amount, e.g., TEU or FEU for container transportation.	<u>UN010155</u> <u>07</u>	<u>5310</u>
Freight & charges item details	Amount for the charge item	Object	O	0..1	Amount and currency for the charge item. For semantic, user can refer to 5432 5432 Freight charge for that part of consignment which is liable under the same rate class.	<u>UN010037</u> <u>30</u>	<u>5432</u>

Object name	Field name	Type	M / O	Occurrence	Description	UNID	UNTDDED / ISO 7372
Amount for the charge item	Currency code	String	O	0..1	Payment currency, recommend to use 6345 Currency identification code specifying a monetary unit.		<u>6345</u>
Amount for the charge item	Currency name	String	M	1..1	Payment currency name.		
Amount for the charge item	Value	Number	M	1..1	Monetary amount value. To specify the value of a monetary amount.		<u>5004</u>
Amount for the charge item	Exchange rate	Number	O	0..1	Rate of exchange: The rate at which one specified currency is expressed in another specified currency.		<u>5402</u>
Freight & charges item details	Payment place	Object	O	0..1	Payment place, name of the place where the payment has been, or should be made. 3109 is the payment place identifier.	<u>UN010037</u> <u>36</u>	<u>3108 +</u> <u>3109</u>
Payment place	Location code	String	O	0..1	Location identifier of terminal in port, or smaller location, such as terminal depot, rail ramp, e.g., SMDG Recommend to use UNECE Recommendation 16: UNLOCODE.	<u>UN010036</u> <u>80</u>	<u>3225</u>
Payment place	Location name	String	M	1..1	Name of the location. e.g., Shanghai.	<u>UN010036</u> <u>81</u>	<u>3224</u>

Table 9 — Terms information/Remarks (B9)

Object name	Field name	Type	M / O	Occurrence	Description	UNID	UNTDDED / ISO 7372
Terms information /Remarks		Object	M	1..1			
Terms information /Remarks	Carrier's standard terms and conditions	String	M	1..1	Contractual clause	<u>UN010026</u> <u>48</u>	<u>4068</u>
Terms information /Remarks	B/L remarks	String	O	0..n	The remarks of the status of receipt of the goods as stated in B/L 4451 Text subject code qualifier: Code specifying the subject of the text. AAS B/L remarks The remarks printed or to be printed on a B/L.	<u>UN010035</u> <u>53</u>	<u>4451</u>
Terms information /Remarks	Shipper special terms	String	O	0..n	Additional information provided by shipper/consignor in shipping instruction.	<u>UN010136</u> <u>07</u>	<u>4184</u>
Terms information /Remarks	Carrier special terms	String	O	0..n	Additional information provided by carrier in shipping information.	<u>UN010042</u> <u>04</u>	<u>7160</u>

3.4 Generic eBL processing control and record on digital platform

Table 10 — Data element and structure specification for generic eBL processing control and record on digital platform

Object name	Field name	Type	M / O	Occurrence	Description	UNID	UNTDDED / ISO 7372
Generic eBL processing control and record on digital platform		Object					
Generic eBL processing control and record on digital platform	Additional Basic B/L information data for electronic Presentation requirement	Object	M	1..1	Data required to be added to the B/L when the B/L is issued by the carrier to a digital platform.		
Additional basic B/L information data for electronic presentation requirement	Electronic presentation indicator	Boolean	M	1..1	The indication of whether this referenced B/L is presented in an electronic format. If yes, then no paper-based B/L should be issued unless the electronic B/L is surrendered by electronic means.	<u>UN010035</u> <u>65</u>	
Additional basic B/L information data for electronic presentation requirement	eBL platform provider	Object	M	1..1	The party who provides eBL service.	<u>UN010035</u> <u>83</u>	
eBL platform provider	Party ID	String	O	0..1	A unique identifier of this party. Usually, it's a unique registration code or global identifiable code assigned in an ID scheme.	<u>UN010045</u> <u>95</u>	3039
eBL platform provider	Party name text	String	M	1..1	Name of a party.	<u>UN010045</u> <u>98</u>	3036
eBL platform provider	Party platform identifier	String	M	1..1	Code specifying the identity of a party. The unique ID in the eBL platform.		

Object name	Field name	Type	M / O	Occurrence	Description	UNID	UNTDDED / ISO 7372
eBL platform provider	Contact	Object	O	0..n	Party contact including contact ID, name, and department name.	<u>UN010046</u> <u>02</u>	
Contact	Contact ID	String	O	0..1	The unique identifier for this contact. The unique ID in the system or B/L to identify the contact, like the State ID, or other global identifiable ID assigned in an ID scheme.	<u>UN010016</u> <u>41</u>	3413
Contact	Contact name	String	O	0..1	The name, expressed as text, of this contact person.	<u>UN010016</u> <u>42</u>	3412
Contact	Department name	String	O	0..1	The name, expressed as text, of the department to which this contact belongs within an organization.	<u>UN010016</u> <u>43</u>	3412
Contact	Contact platform identifier	String	O	0..1	To identify a department or employee ID in the context of the party where has belonged to. The unique ID assigned in the eBL platform.		
Contact	Communication	Object	O	0..1	Including phone, fax, e-mail, postal address and/or reference of the contact.		
Communication	Contact phone	String	O	0..1	A telephone communication for this party. Telephone number, including country and/or city code as required, for voice or data transmission by telephone beyond the border of a country.	<u>UN010045</u> <u>64</u>	3155+314 8
Communication	Contact fax	String	O	0..1	Fax communication information for this location party. Communication service involving teletypewriter machines connected by wire or electronic transmission media. Teletypewriter machines are the devices used to send and receive signals and produce hardcopy from them.	<u>UN010045</u> <u>67</u>	3155+314 8
Communication	Contact email address	String	O	0..1	The uniform resource identifier (URI), such as a web or an email address, for this universal communication.	<u>UN010045</u> <u>69</u>	3155+314 8

Object name	Field name	Type	M / O	Occurrence	Description	UNID	UNTDDED / ISO 7372
eBL platform provider	Postal address	Object	O	0..1	The postal address for this trade party.		
Postal address	Address description	Array of string	O	0.1	To specify the name/address and their related function.	<u>UN010046</u> <u>03</u>	
Postal address	Postcode	String	O	0..1	Code specifying a postal zone or address.	<u>UN010045</u> <u>35</u>	3251
Postal address	Street name	String	O	0..1	Specification of the postal delivery point such as street and number or post office box.	<u>UN010045</u> <u>43</u>	3042
Postal address	City name	String	O	0..1	Name of a city.	<u>UN010045</u> <u>44</u>	3164
Postal address	Country subdivision name	String	O	0..1	Name of a country subdivision.	<u>UN010045</u> <u>49</u>	3228
Postal address	Country code	String	O	0..1	Identification of the name of the country or other geographical entity. Reference to ISO 3166-1.	<u>UN010045</u> <u>46</u>	3207
Postal address	Country name	String	O	0..1	Name of the country or other geographical entity.	<u>UN010045</u> <u>47</u>	3206
eBL platform provider	Party external references	Object	O	0..n	Reference of the party, e.g., USCI and EORI. Consider using the repeatable UN/CCL party identifier structure (ID, identification scheme, identification scheme agency).		
Party external references	Tax authority ID	String	O	0..1	Party identifier for tax authority.	<u>UN010044</u> <u>87</u>	3446
Party external references	Customs ID	String	O	0..1	Party identifier for customs.	<u>UN010045</u> <u>95</u>	

Object name	Field name	Type	M / O	Occurrence	Description	UNID	UNTDDED / ISO 7372
Party external references	Reference type	String	O	0..1	Reference type, it is recommended to use the UNECE code list. The reference may not be a document, for example, a bulk carrier can use this field to identify the B/L related to a voyage charter party. (For UNTDED for associated documents shall be made here) 1153 Reference code qualifier, code qualifying a reference. e.g., RF Export reference number Reference number given to an export shipment.	<u>UN010060</u> <u>36</u>	1153
Party external references	Reference number	String	O	0..1	Identifies a reference. Under the circumstance that the voyage charter party needs to be incorporated into the B/L, the date to identify the voyage charter party under which the B/L is issued.	<u>UN010039</u> <u>91</u>	1154
Additional basic B/L information data for electronic presentation requirement	Original B/L indicator	Boolean	M	1..1	The indication of whether or not this B/L is an authenticated original. If yes, it means that this B/L has the title function; if there is no such indicator, it means this document is not the document of title, like sea waybill.	<u>UN010024</u> <u>94</u>	<u>4366</u>
Additional basic B/L information data for electronic presentation requirement	To order indicator	Boolean	O	0..1	Indicator for to order B/L, mandatory for negotiable B/L, e.g., true or false Means whether it is negotiable.		
Generic eBL processing control and record on digital platform	Processing record	Object	M	1..1	Data required to a digital platform when the e B/L is processed on it.		

Object name	Field name	Type	M / O	Occurrence	Description	UNID	UNTDDED / ISO 7372
Processing record	B/L number	String	M	1..1	The B/L that the action party has done action on.	<u>UN010041</u> <u>64</u>	<u>1065</u>
Processing record	Document version	Integer	M	1..1		UN010035 73	1057
Processing record	Title processing action	Object	M	1..1			
Title processing action	Title processing action code	String	M	1..1	Request of eBL process. For processing an eBL to replace the paper way, there are five kinds of action listed as below, the issue should always be taken by the carrier, then the shipper as the first title owner and holder can choose the next action from transfer/endorse/escrow, surrender should always be taken by the consignee to surrender the B/L to the carrier for cargo delivery. — Issue — Transfer — Endorse — Escrow/Escrow release — Surrender		
Title processing action	Transaction ID and time stamp	Object	M	1..1	1154 Reference identifier, identifies a reference. AIM Individual transaction reference number, reference number applying to one specific transaction.		<u>1154</u>
Transaction ID and time stamp	Transaction ID	String	M	1..1	Reference number of the transaction 1154 Reference identifier, identifies a reference. AIM Individual transaction reference number Reference number applying to one specific transaction.		1154

Object name	Field name	Type	M / O	Occurrence	Description	UNID	UNTDED / ISO 7372
Transaction ID and time stamp	Time stamp	String	M	1..1	On platform date & time, reference to 8601 standards, (Example: 2019-07-10T06:11:01.263+08:00)		2003
Title processing action	Action by	String	M	1..1	The parties on the platform take the actions: the title owner can do transfer, endorse, escrow, and surrender, while the B/L holder can only do escrow and release. When the action is successful, the acting party should be recorded as the previous one in the title owner record and/or B/L holder record.		
Title processing action	Signatory text	String	O	0..1	The signatory, expressed as text, for this document authentication.	<u>UN010061</u> <u>91</u>	
Title processing action	Signatory image	Binary	O	0..1	The signatory image, expressed as a binary object, for this document authentication.	<u>UN010126</u> <u>87</u>	
Title processing action	Action to	String	M	1..1	When the action is transfer or endorse, this action to party will be authorized the title owner and B/L holder role on the platform and should be recorded into the title owner record as the current title owner and recorded into B/L holder records as the current B/L holder. When the action is escrow, this action to party will be authorized as the B/L holder role and be updated into the B/L holder record as the current B/L holder.		
Processing record	DLT asset	Object	M if on DLT	1..1	The DLT Asset is a record on the DLT platform. And for e B/L, the DLT asset contains the structured data pertaining to the B/L. During the lifecycle of an eBL, every record (including the processing record, title owner record and B/L holder record) should be linked to its corresponding DLT asset using its unique and immutable DLT asset ID.		

Object name	Field name	Type	M / O	Occurrence	Description	UNID	UNTDED / ISO 7372
DLT asset	DLT asset ID	String	M	1..1	Asset ID is generated by the DLT based platform when the message/documentation has been successfully stored, like an index to locate the message/documentation. For eBL, every eBL has its own unique and immutable asset ID on the DLT based platform.		
DLT asset	DLT asset version	Integer	M	1..1	To identify the asset version. 1057 To identify a version.		<u>1057</u>
DLT asset	DLT asset type	String	M	1..1	Asset type code such as eBL. 1001 Code specifying the name of a document.		<u>1001</u>
Processing record	eBL traceability log ID	String	M	1..1	The log ID to trace the processing chain of the eBL. When there is any new record or action done to the eBL, the log of this eBL should also be updated while the log ID is never changed, it is generated once upon the eBL is issued onto the platform.		
Generic eBL processing control and record on digital platform	Title owner record	Object	M	1..1	Record the current title owner on the platform.		
Title owner record	The historical title owner	Array of string	M	1..n	All historical title owners should be recorded into the log.		
Title owner record	The previous title owner	String	M	1..1	The party who has taken the action to process the eBL successfully.		<u>3036</u>
Title owner record	The current title owner	String	M	1..1	The party who has been authorized as eBL title owner.		<u>3039</u>

Object name	Field name	Type	M / O	Occurrence	Description	UNID	UNTDED / ISO 7372
Generic eBL processing control and record on digital platform	B/L holder record	Object	M	1..1	Record the current B/L holder on platform.		
B/L holder record	The historical B/L holder	Array of string	M	1..n	All historical B/L holder should be recorded into the log.		
B/L holder record	The previous B/L holder	String	M	1..1	The party who has taken the action to process the eBL successfully which is escrow or escrow release.		<u>3036</u>
B/L holder record	The current B/L holder	String	M	1..1	The party who is currently honoured as eBL holder.		<u>3039</u>

Annex 1. Definitions

For the purposes of this document, the following terms and definitions apply.

ISO and IEC maintain terminology databases for use in standardization at the following addresses:

- ISO Online browsing platform: available at <https://www.iso.org/obp>
- IEC Electropedia: available at <https://www.electropedia.org/>

bill of lading

B/L

document which evidences a contract of carriage by sea and the taking over or loading of goods by the *carrier* (3.3), and by which the carrier undertakes to deliver the goods against surrender of the document

Note 1 to entry: A provision in the document that the goods are to be delivered to the order of a named person, or to order, or to bearer, constitutes such an undertaking (United Nations Conference of the Carriage of Goods by Sea).

Note 2 to entry: In certain countries, e.g., Canada and the United States of America, the term “bill of lading” is used to represent a “negotiable bill of lading”.

[SOURCE: United Nations Convention on the Carriage of Goods by Sea (Hamburg, 31 March 1978); UNECE/TRADE/377/Rev.3, 2019, 59]

holder

party for the time being in possession of the *B/L* (3.1)

Note 1 to entry: A holder can be:

- a) A person that is in possession of a negotiable transport document; and
 - 1) if the document is an order document, is identified in it as the *shipper* (3.8) or the *consignee* (3.4), or is the person to which the document is duly endorsed; or
 - 2) if the document is a blank endorsed order document or bearer document, is the bearer thereof; or
- b) the person to which a negotiable electronic transport record has been issued or transferred in accordance with the procedures (Rotterdam rules).

[SOURCE: United Nations Convention on Contracts for the International Carriage of Goods Wholly or Partly by Sea (New York, 11 December 2008); UNECE/TRADE/377/Rev.3, 2019, 539]

carrier

party by whom or in whose name a contract of carriage of goods by sea has been concluded with a shipper

[SOURCE: United Nations Convention on the Carriage of Goods by Sea (Hamburg, 31 March 1978), modified — "any person " has been replaced by "party"]

consignee

party to whom goods are shipped

[SOURCE: ISO 24533-2:2022, 3.15, modified — "person or organization" has been replaced by "party".]

electronic bill of lading

eBL

electronic document that transmits *B/L* (3.1) information by electronic data interchange and represents the legal and functional equivalent of the paper B/L

Note 1 to entry: to entry: eBL is one type of electronic transferable records (ETR), and it complies with the UNCITRAL Model Law on Electronic Transferable Records (MLETR), if applicable.

endorsee

party in whose favour a negotiable *B/L* (3.1) is endorsed

freight forwarder

party arranging the carriage of goods, including connected services and/or associated formalities, on behalf of a *shipper* (3.8) or *consignee* (3.4)

[SOURCE: ISO 24533-2:2022, 3.23, modified — "consignor" has been replaced by "shipper".]

shipper

party which, according to the booking instructions stated on the *B/L* (3.1), by contract with a *carrier* (3.3), consigns or sends goods with the carrier, or has them conveyed by the carrier, and has the right to require the carrier to issue the B/L and undertake corresponding obligations

[SOURCE: ISO 24533-2:2022, 3.17, modified — The preferred term "consignor" has been removed; "according to the booking instructions stated on the B/L" and "and has the right to require the carrier to issue the B/L and undertake corresponding obligations" have been added.]

title owner

party who holds the title of goods under the *B/L* (3.1)

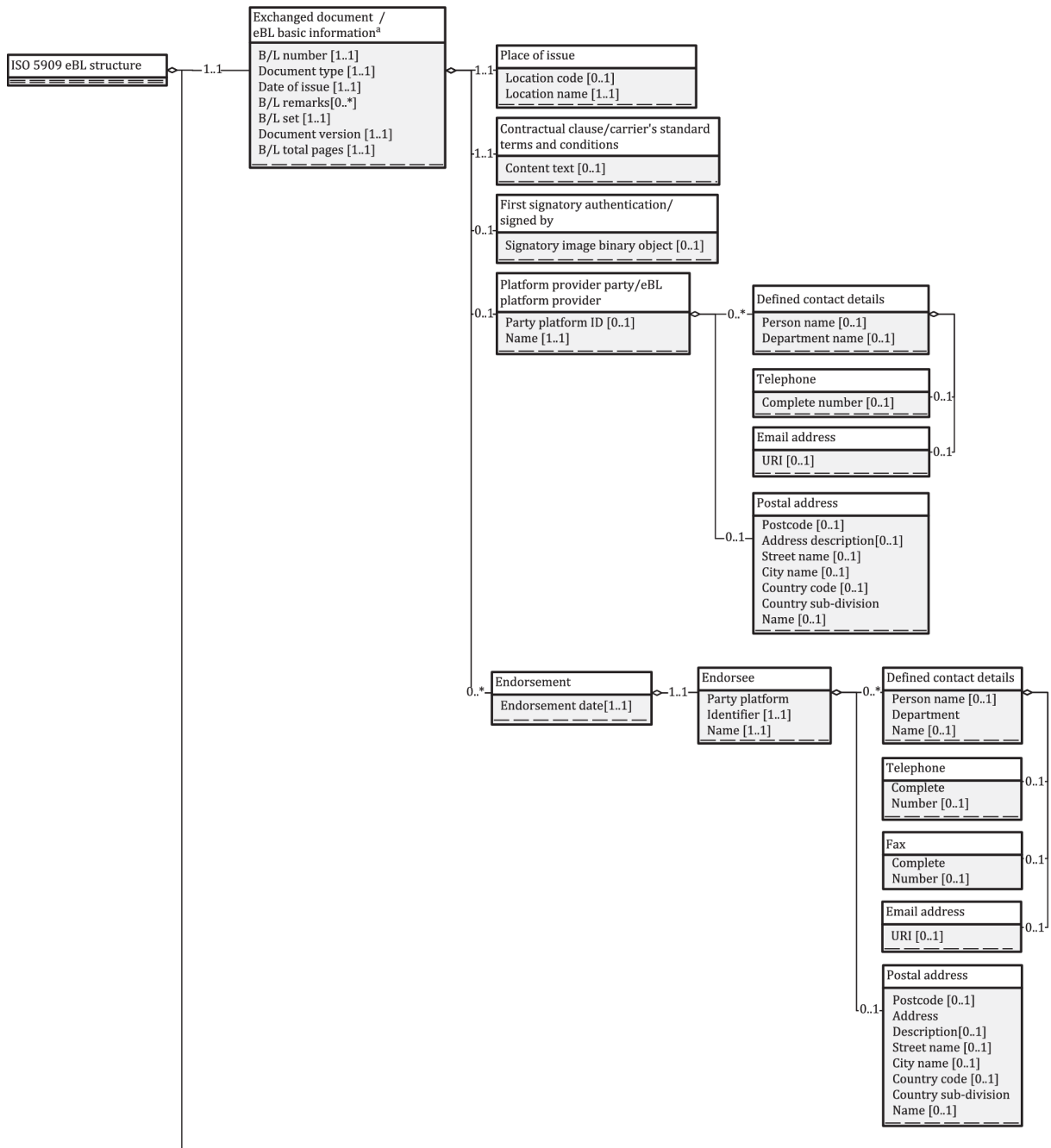
Abbreviated terms

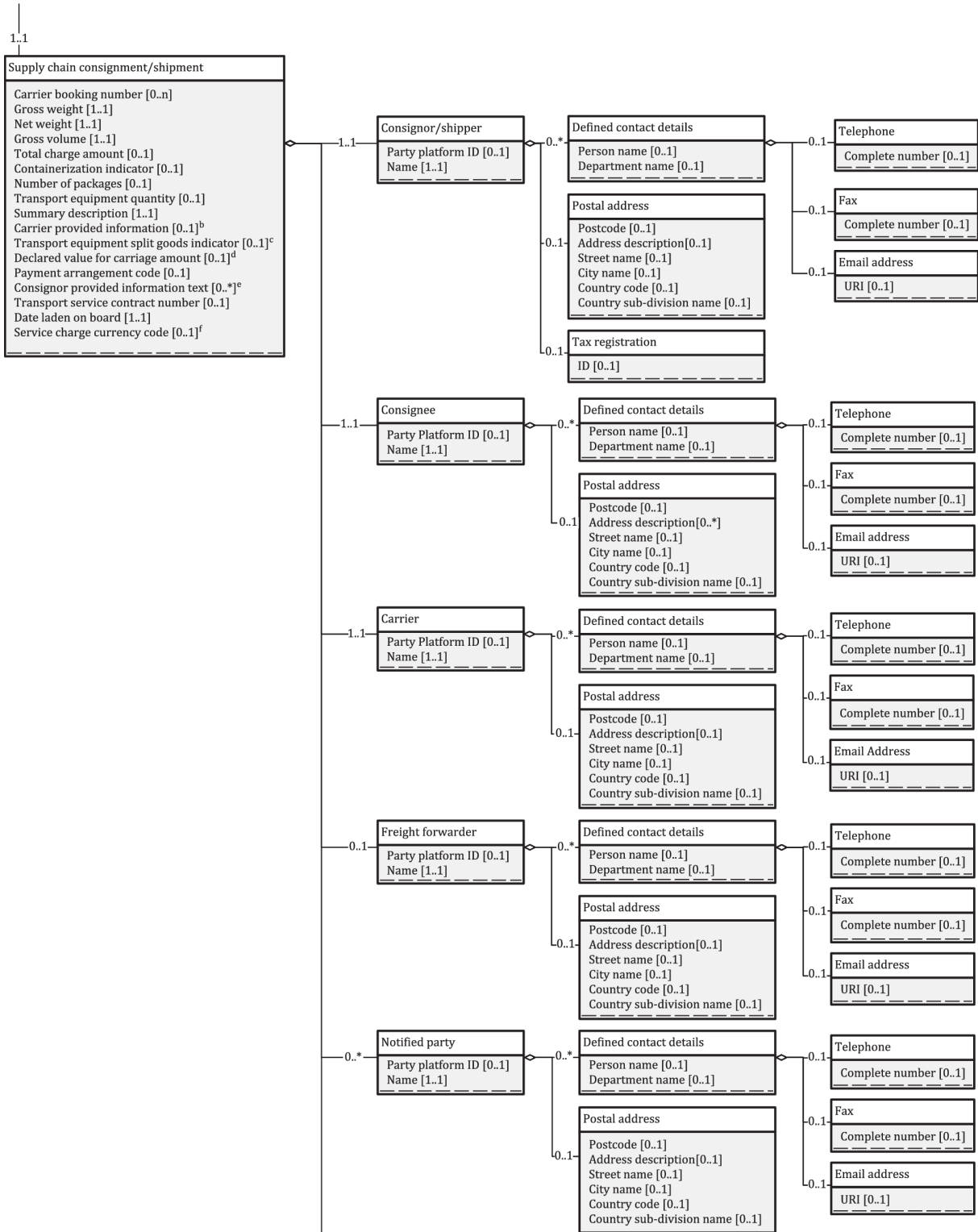
BOV	business operation view
DLT	distributed ledger technology

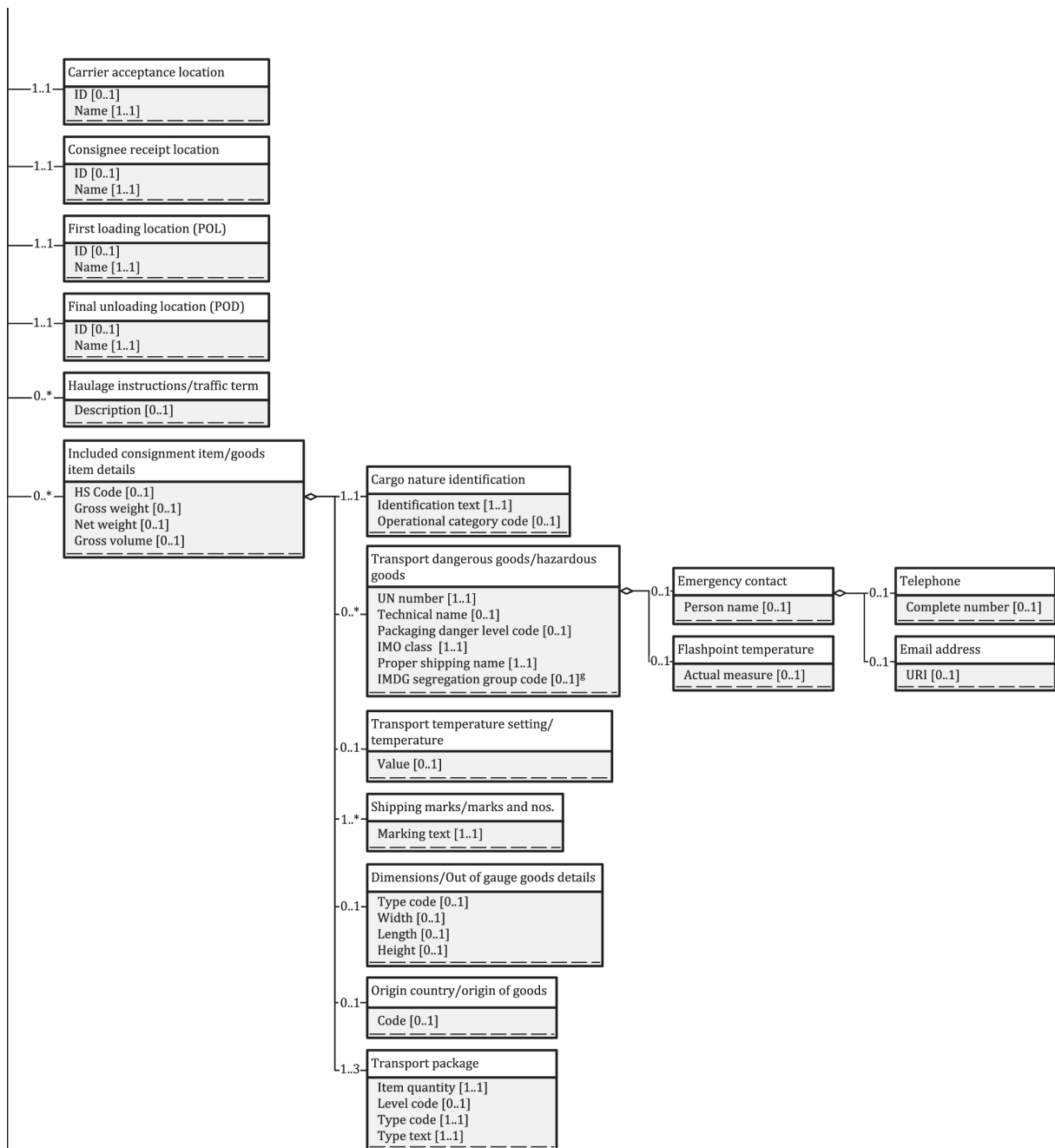
DLT eBL	electronic bill of lading based on distributed ledger technology
eBL	electronic bill of lading
EORI	economic operators registration and identification number
FSV	functional service view
MLETR	Model Law on Electronic Transferable Records
MMT	Multi Modal Transport
MMT-RDM	Multi Modal Transport Reference Data Model (of UN/CEFACT)
SMDG	Ship Message Design Group
SMEs	small and medium-sized enterprises
UN/CCL	United Nations Core Components Library
UN/CEFACT	United Nations Centre for Trade Facilitation and Electronic Business
UNCITRAL	United Nations Commission on International Trade Law
UNECE	United Nations Economic Commission for Europe
UN/EDIFACT	United Nations/Electronic Data Interchange for Administration, Commerce and Transport
UNID	Unique UN Assigned ID
UNLK	United Nations Layout Key
UNLOCODE	United Nations Code for Trade and Transport Locations
UNTDED	United Nations Trade Data Elements Directory
USCI	Unified Social Credit Identification

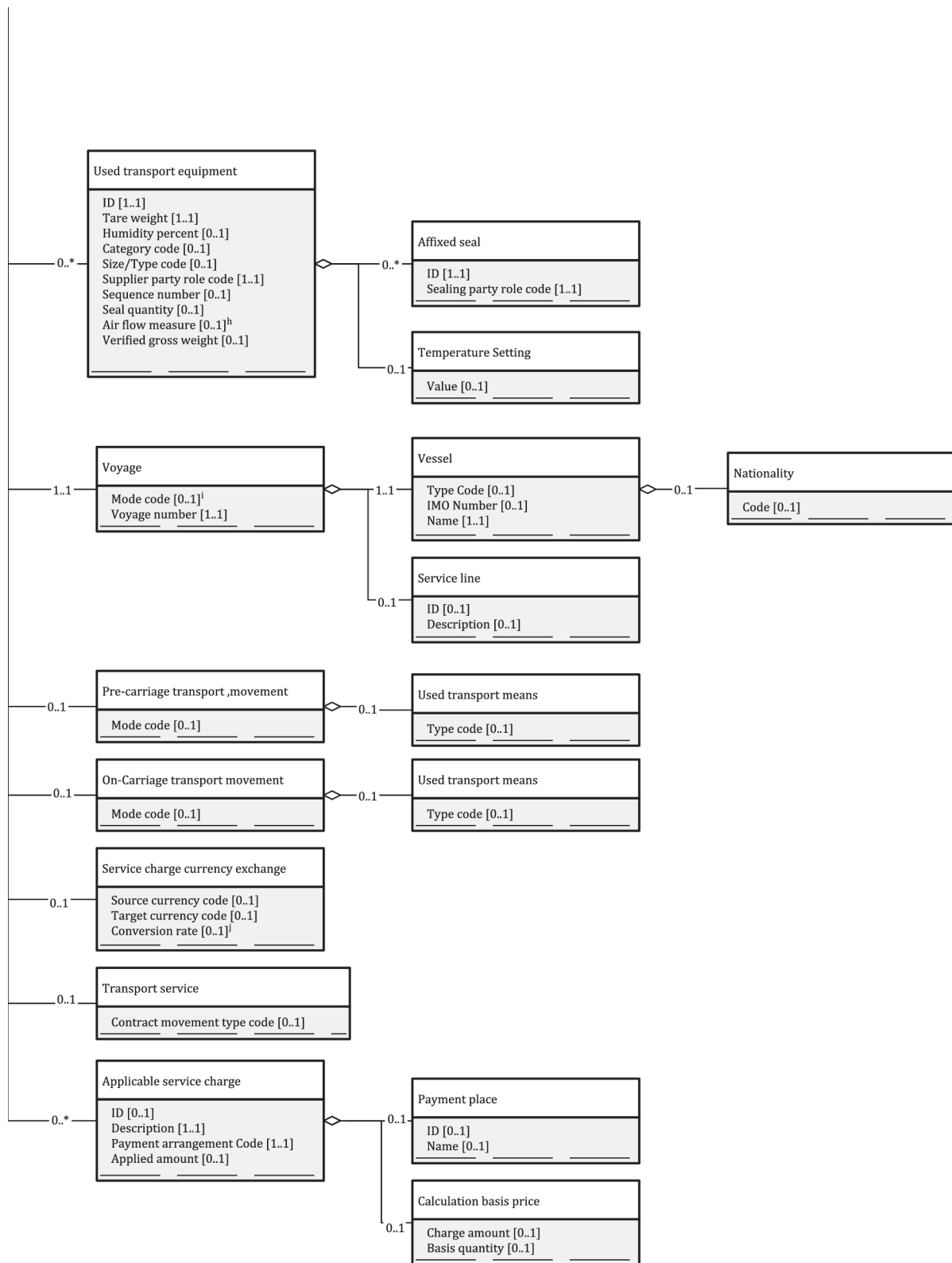
Annex 2. UML for B/L data exchanging

A PDF version of [Figure A.1](#) can be found at: <https://standards.iso.org/iso/5909/ed-1/en>.









NOTE The UML is to provide the guidance for B/L data exchanging and thus is exported from UNCEFACT MML. The following definition are the mapping for some data elements between the UML and the tables in this document.

- a Most of the data elements at this section are listed in [Table 1](#) B/L basic information.
- b Refer to [Table 9](#) Terms information/Remarks.Carrier special terms

- c Refer to [Table 7](#) Containerized goods details.Is partial.
- d Refer to [Table 5](#) Declared value of goods.
- e Refer to [Table 9](#) Terms information/Remarks.Shipper special terms.
- f The definition of service charge can be Referred to Freight & charge.
- g Refer to [Table 7](#) Hazardous goods details.Packing group.
- h Refer to [Table 7](#) Temperature controlled goods details.Ventilation.
- i Refer to [Table 4](#) Voyage.Transport mode code
- j Refer to [Table 8](#) Total amount.Exchange rate

Figure 8 — UML for B/L data exchanging