

1
2
3
4
5
6
7
8
9
10
11
12
13
14
15
16
17
18
19
20
21
22
23
24
25
26
27
28
29
30

Draft
January 2019
CEFACT/___/___



UNITED NATIONS ECONOMIC COMMISSION FOR EUROPE
UNITED NATIONS CENTRE FOR TRADE FACILITATION
AND ELECTRONIC BUSINESS (UN/CEFACT)

**BUSINESS REQUIREMENTS SPECIFICATION
(BRS)**

Cross Industry Despatch and Receive Process

Approved: UN/CEFACT Bureau _____

Version: 3.0
Release: 1.0

31
32
33
34
35
36
37
38
39
40
41
42
43
44
45
46
47
48
49

TABLE OF CONTENTS

2 INTRODUCTION 4

3 OBJECTIVE 4

4 AUDIENCE..... 4

5 REFERENCE DOCUMENTS..... 4

6 CHANGE LOG..... 4

7 SCOPE..... 5

7.1 BUSINESS PROCESS ELABORATION 5

7.1.1 Business Process Flow 7

7.1.2 Business Collaboration..... 9

8 BUSINESS REQUIREMENTS..... 11

8.1 BUSINESS INFORMATION VIEW 11

8.2 INFORMATION FLOW DEFINITION..... 11

8.2.1 Advise Despatch (Business Transaction) 11

8.2.2 Correct Despatch Advice (Business Transaction)..... 13

8.2.3 Advise Receipt (Business Transaction)..... 14

8.3 BUSINESS DOCUMENTS..... 18

8.3.1 Despatch Advice 18

8.3.2 Receiving Advice..... 29

8.3.3 Business Rules 49

8.3.4 Definition of Terms..... 49

TABLE OF FIGURES and TABLES

Figure 7-1 Positioning Cross Industry Despatch & Receive within BUY-SHIP-PAY Process Model.....5

Figure 7-2 Scope of the despatch and receive process.....6

Figure 7-3 Business Process Activity Diagram8

Figure 7-4 Entity Life Cycle diagram.....8

Figure 7-5 The Business Collaboration diagram.....9

Figure 7-6 Business Collaboration Protocol - Activity Diagram.....10

Figure 8-1 Business Information View Despatch And Receive Of Goods11

Figure 8-2 Business Transaction Use Case Diagram Advise Despatch.....11

Figure 8-3 Activity Diagram Advise Despatch12

Figure 8-4 Business Transaction Use Case Diagram Correct Despatch Advise13

Figure 8-5 Activity Diagram Correct Despatch Advice14

Figure 8-6 Business Transaction Use Case Diagram Advise Receipt14

Figure 8-7 Activity Diagram Advise of Receipt of Goods.....15

Figure 8-8 Business Entity Class Diagram – Despatch Advice.....16

Figure 8-9 Business Entity Class Diagram – Receiving Advice.....17

Figure 8-10 Business Entity Class Diagram – Trade Product.....17

Figure 8-11 Business Entity Class Diagram – Trade Delivery18

68

| | | |
|----|--|----|
| 69 | Table 7-1 BUY-SHIP-PAY context categories | 5 |
| 70 | Table 8-1 Business Transaction Use Case Description Advise Despatch | 12 |
| 71 | Table 8-2 Business Transaction Use Case Description Correct Despatch Advise | 13 |
| 72 | Table 8-3 Business Transaction Use Case Description Advise Receipt | 15 |
| 73 | | |
| 74 | | |

Initial update

75 2 Introduction

76 The current practice of the exchange of business documents by means of telecommunications – usually
77 defined as e-Business presents a major opportunity to improve the competitiveness of companies,
78 especially for Small and Medium Enterprises (SME). Started as an initiative by CEN/ISSS Work shop
79 eBES, the European Expert Group 1 (EEG1) – Supply Chain & e-Procurement developed the Cross
80 Industry Despatch and Receive process in 2006. The Cross Industry Despatch and Receive process has
81 been compiled using the EUROFER ESIDEL version 1.0 and the Boost Aero version 1.0 as a base, with
82 contributions and submissions from: EUROFER, ODETTE, GS1, EDIFrance, EDIBUILD and Boost
83 Aero.

84 After the UN/CEFACT Forum meeting in Dublin in March 2007, the BRS was further developed with
85 requirements contributed from TBG1 members such as GS1, UBL, EDIFrance, US Department of
86 Defense, JAIF and others. Also requirements were implemented from Construction (TBG 6). The
87 structure was reworked according to the Buy-Ship-Pay process model developed by TBG 14. The high
88 level entity model was based on the Buy-Ship-Pay information model jointly developed by TBG1,
89 TBG2, TBG3, TBG5 and TBG18.

90 3 Objective

91 The objective of this document is to standardize the Business processes, the Business transactions and
92 the Information entities of the despatch and receive process used by the industries in the supply chain.
93 The business process is the detailed description of the way trading partners intend to play their
94 respective roles, establish business relations and share responsibilities to interact efficiently with the
95 support of their respective information systems. Each Business transaction is realized by an exchange
96 of Business documents (also called messages). The sequences in which these documents are used,
97 composes a particular instance of a scenario and are presented as activity diagrams in the document.

98 4 Audience

99 The audience of this document is all users who are interested in the delivery process and information
100 data.

101 5 Reference Documents

102 Knowledge and application of the following standards is crucial to the development of quality
103 business requirements specifications. Other key references are shown in the appropriate part of the
104 document.

- 105 • UN/CEFACT TBG1 Common Supply Chain BRS, Release 1
- 106 • UN/CEFACT TBG2 Buy-Ship-Pay (Including UNeDocs) BRS, version 1.0
- 107 • UN/CEFACT Modeling Methodology (CEFACT/TMG/N090R10, November 2001)
- 108 • UN/EDIFACT – Despatch advice message, Receiving advice message
- 109 • UN/CEFACT Modeling Methodology (CEFACT/TMG/N090R10, November 2001).
- 110 • UN/CEFACT Business Requirement Specification – Template v2.0.1 (May 2012)
- 111 • UN/CEFACT BRS_CrossIndustryDeliveryProcess_v1.013.1 (Sep 2008).

112 6 Change log

| Date of Change | Version | Changed | Summary of Changes |
|----------------|---------|--|---|
| 20-feb-2009 | 1.00.13 | - | Version sent for approval to TBG Steering |
| 17-jan-2019 | 3.0 | Added: fig. 8.1, §8.3.2 Changed: fig 8.8 till 8.11, §8.3.1 | Initial update |

7 Scope

This section describes the extent and limits of the business process within the supply chain being described in this document.

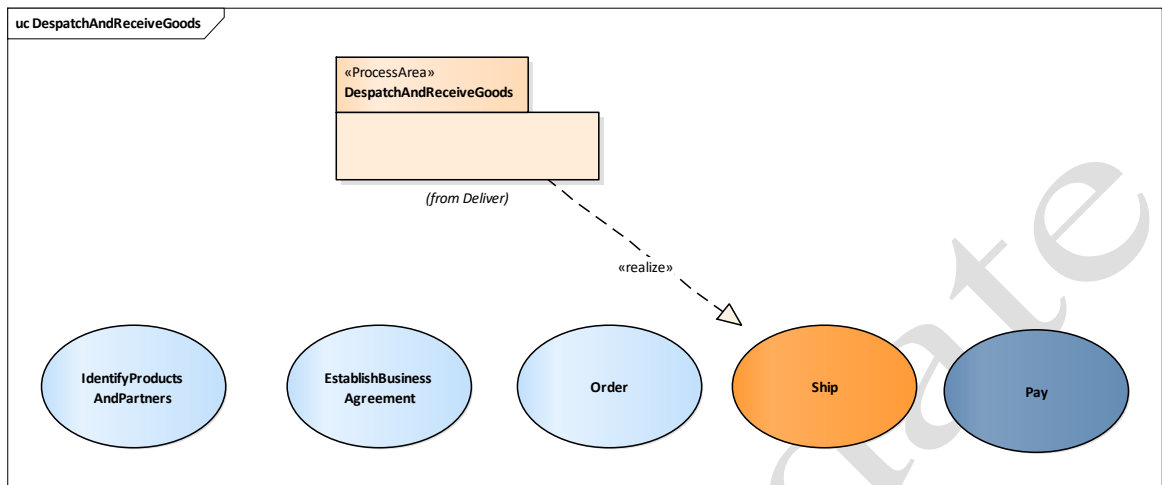


Figure 7-1 Positioning Cross Industry Despatch & Receive within BUY-SHIP-PAY Process Model

Table 7-1 BUY-SHIP-PAY context categories

| Categories | Description and Values |
|--------------------------------|--|
| Business Process | Despatch and Receive process in the supply chain BUY-SHIP-PAY/Procurement&Sales/Delivery |
| Product Classification | All |
| Industry Classification | All |
| Geopolitical | Global |
| Official Constraint | None |
| Business Process Role | ShipFrom, ShipTo |
| Supporting Role | Carrier |
| System Capabilities | No limitations |

Note:

The processes defined apply only to the collaboration between Ship From (sender of goods) and Ship To (receiver of goods). Internal processes and communication with third parties (such as Transporters, Warehouses, etc.) are outside the scope of this BRS. However the Carrier (Transporter) is in a supporting role in the process as some of the generated documents/data will be carried by them for Proof-of-Delivery Process (POD) and also may re-use information such as locations, weight and Transport packaging

7.1 Business Process Elaboration

The processes contained in the Despatch and Receive process are shown in the following Use Case Diagram.

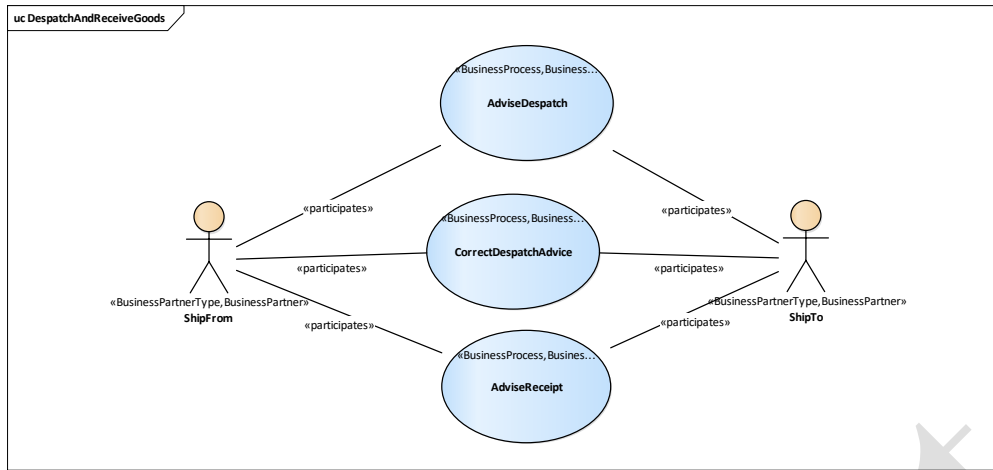


Figure 7-2 Scope of the despatch and receive process

The despatch and receive process covers the physical delivery of goods from one physical site to another according to agreements between the supplier and customer in order to fulfill a delivery contract.

The process requires an existing commercial contract between a customer buyer and a supplier seller. This contract can be established in several ways, as spot order, call off order, if necessary, further detailed in a delivery instruction etc. Prior to the delivery, the customer and the supplier must also agree upon the delivery conditions and the way the transportation of goods is to be organized.

Note:

Ship From may be the supplier (or one of supplier's subsidiaries) but not necessarily. Neither has the Ship To to be the Customer of the Goods. Therefore, neither the term Supplier nor Customer is applicable to describe this partner. An analogous situation applies to Ship To. For instance, as part of a shipping process, the Goods may be sent to a Logistics Service Provider (LSP) e.g. Packing or Consolidation company. In this case the Ship To Party is the LSP. When the Goods have been Re-packed then the Ship From Party will be the LSP.

In the Despatch and Receive process it is foreseen to transmit information between the Ship From and the Ship To concerning:

- The shipment and the consigned goods despatched by the Ship From.
- If necessary, corrected details of a shipment and/or the consigned goods despatched by the Ship From.
- The receipt of the shipment and the consigned goods by the Ship To.

The Despatch and Receive process covers the way in which information is provided on the despatch of goods and on the receipt of goods.

Providing information to the Ship To of the despatch of goods at (or near to) the moment of departure, allows the Ship To to prepare for the reception of the goods. Providing information about the reception of the goods allows the Ship From to check the correct arrival of the despatched goods and the information can be used as a trigger to send an invoice to the customer.

Note:

The structure of the Despatch Advice should be very similar to the Invoice because in integrated systems the workflow will create an Invoice from this data or both documents will be derived from the same source. The focus of this document is on logistics data and so will provide information for packaging and stock control. Of course an Invoice may also be sufficient, as in the case of Point-Of-Sale systems, however a Despatch Advice is more explicit and indicates the actual movement and may also be required where the pricing information is either not available or is sensitive.

Information exchanged to inform the Ship To about the goods despatched may be structured as described below:

- Item based, giving the details of a consignment from the point of view of the goods despatched
- Package based, giving the details of a consignment from the point of view of the package used for the transportation, i.e. the handling units and the package units within which the goods are despatched.
- A combination of both approaches is possible.

In certain circumstances, e.g. because of transportation incidents, the Ship From may need to correct or cancel the despatch and inform the Ship To accordingly.

Once the Ship To has received the goods (or units), he will check them against the goods (or units) advised in the despatch information. The Ship To may then send to the Ship From, a confirmation of the reception of the goods (or units) and, if applicable, a notification of any discrepancies.

7.1.1 Business Process Flow

Ship From prepares shipment according to previously received instructions or in agreement with terms of delivery as specified in an order. Parallel to the preparation of the physical shipment all necessary data for an electronic Despatch Advice message is collected and compiled. The message is being sent from Ship From to Ship To.

In the event of changes in the shipment after the transmission of the despatch advice the Ship From compiles a Despatch Advice correction message and sends it to Ship To.

After receiving and – if necessary – inspection of the goods the Ship To creates an electronic Receiving Advice message. This message confirms the received goods and their quantity. It may contain statements concerning the conditions of received goods and their compliance with the order or otherwise agreed quality standards.

The Activities involved in the Despatch and Advice processes are shown in figure 4-3 together with the states of the “Delivery” Business Entity that are changed by the processes.

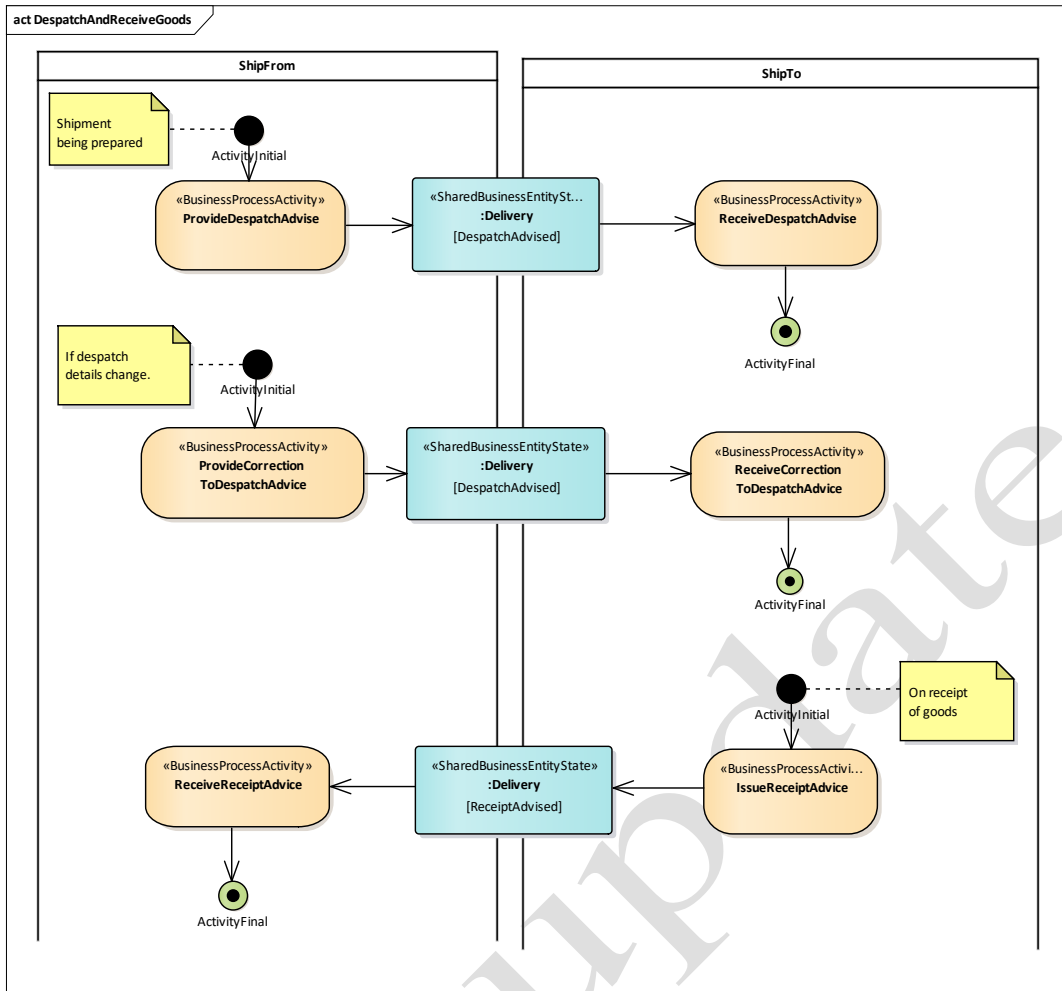


Figure 7-3 Business Process Activity Diagram

The states that the Delivery Business Entity may assume as a result of the Despatch and Receive business process are shown in the Entity Life Cycle diagram figure 4-4.

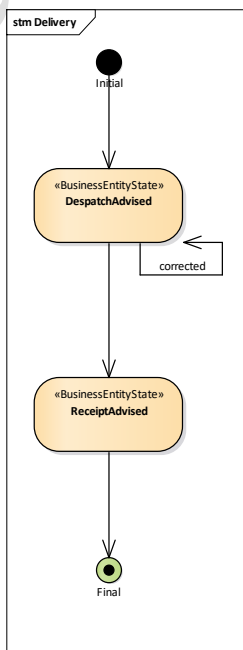


Figure 7-4 Entity Life Cycle diagram

7.1.2 Business Collaboration

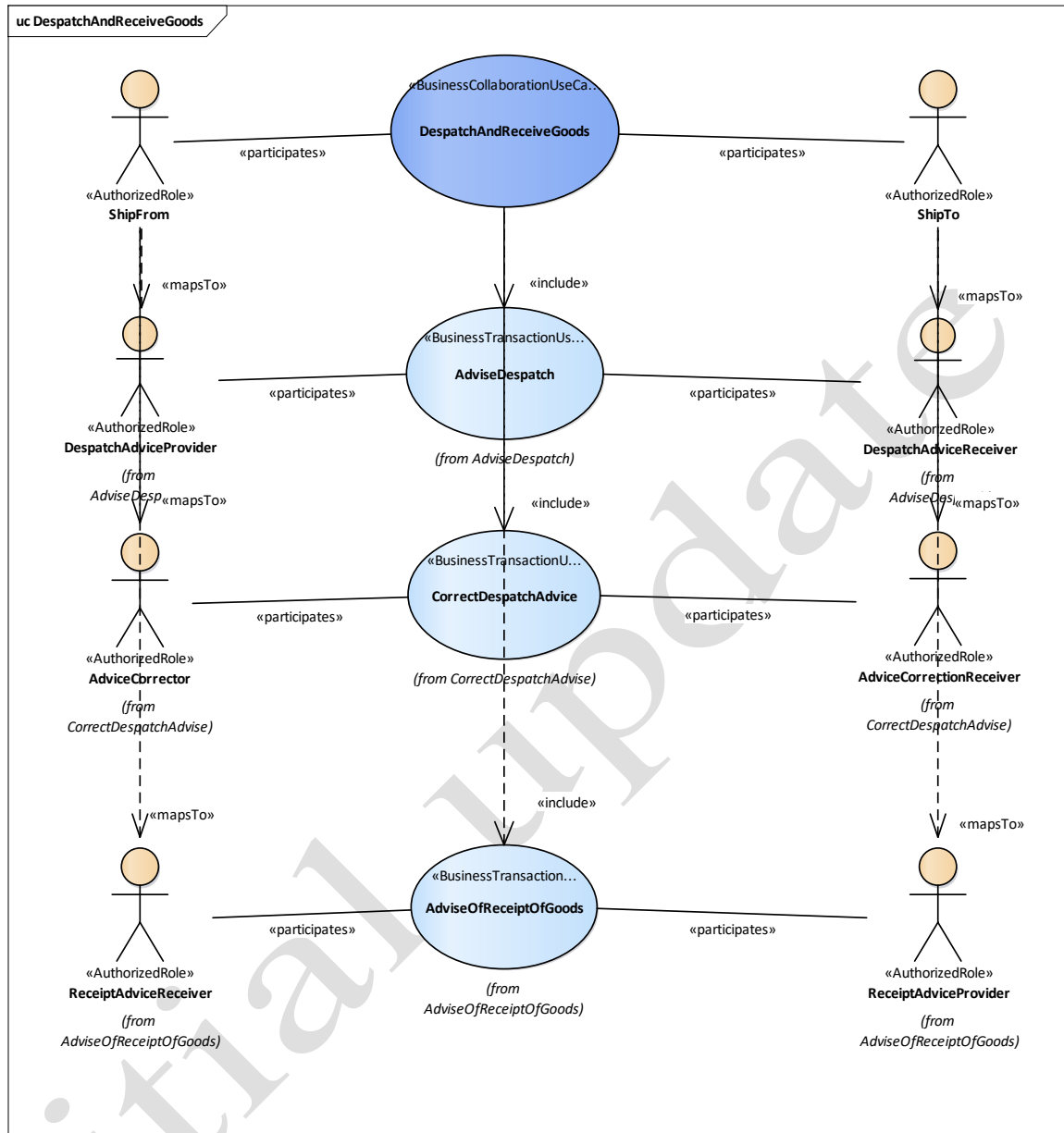


Figure 7-5 The Business Collaboration diagram

The Business Collaboration diagram figure 4-5 (above) shows the three transactions that make up the Despatch and Receive process. It also links the authorised roles from each transaction to the Business Partner Types (Ship From and Ship To). The logical order in which these transactions may occur is shown in the Business Collaboration Protocol diagram figure 4-6 (below). The Use Case Diagrams and description of the three business transactions are shown in Section 4-3

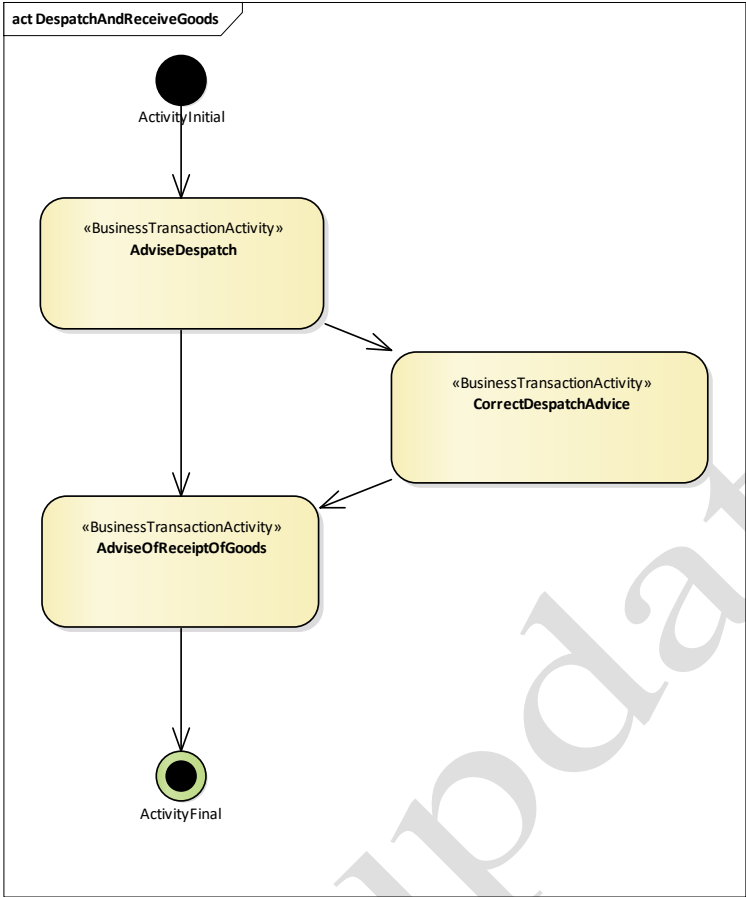


Figure 7-6 Business Collaboration Protocol - Activity Diagram

8 Business Requirements

8.1 Business Information View

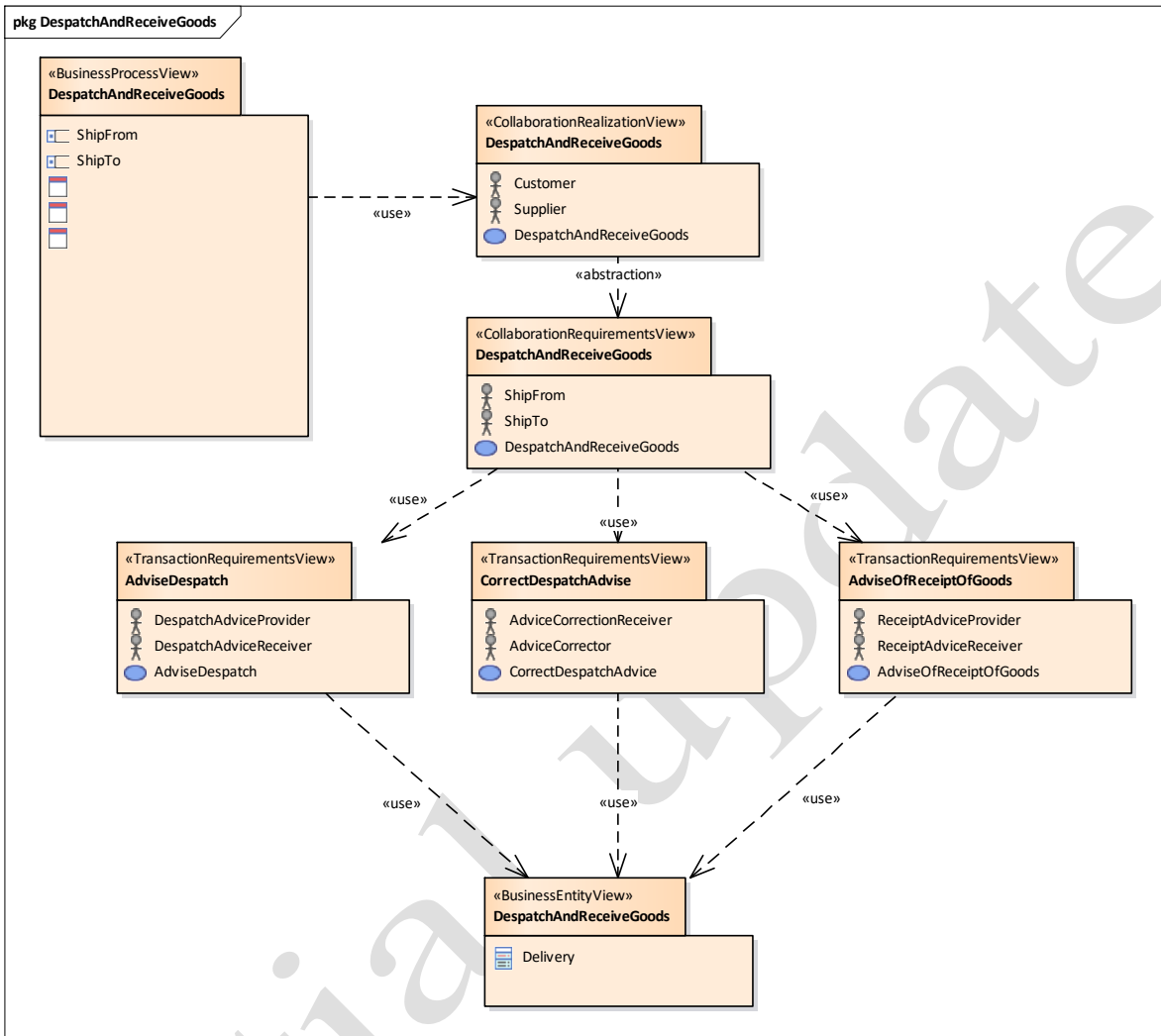


Figure 8-1 Business Information View Despatch And Receive Of Goods

8.2 Information flow definition

8.2.1 Advise Despatch (Business Transaction)

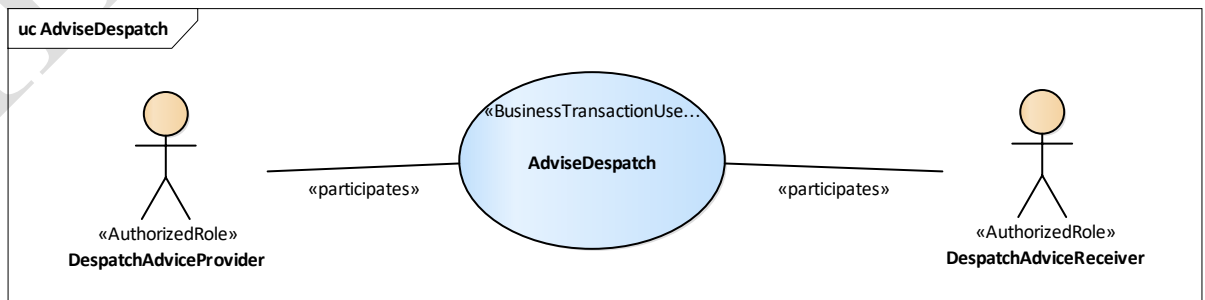


Figure 8-2 Business Transaction Use Case Diagram Advise Despatch

Table 8-1 Business Transaction Use Case Description Advise Despatch

| | |
|--------------------------------|--|
| Identifier | Advise Despatch |
| Business Message Type | Despatch Advice |
| Description | Once the goods are ready to leave (or have just left) the ship from location the Ship From sends a despatch advice to the Ship To to inform him about the despatch. Once the Ship To has received the despatch advice, the process ends. |
| Partner Types | Ship From, Ship To |
| Authorized Roles | Despatch Advice Provider, Despatch Advice Receiver. |
| Legal Implications | In certain cases (such as Ex-works terms) the customer may have taken responsibility for the custody of the goods when the Despatch Advice has been sent. This may also effect ownership. |
| Initial/Terminal Events | <ul style="list-style-type: none"> • Initial: the goods are ready to leave (or have just left) the ship from location. • Terminal: the Ship To has received the despatch advice (and can prepare for reception of the goods) |
| Scope | Information exchange between Ship From and Ship To concerning the despatch of goods. |
| Boundary | |
| Constraints | |

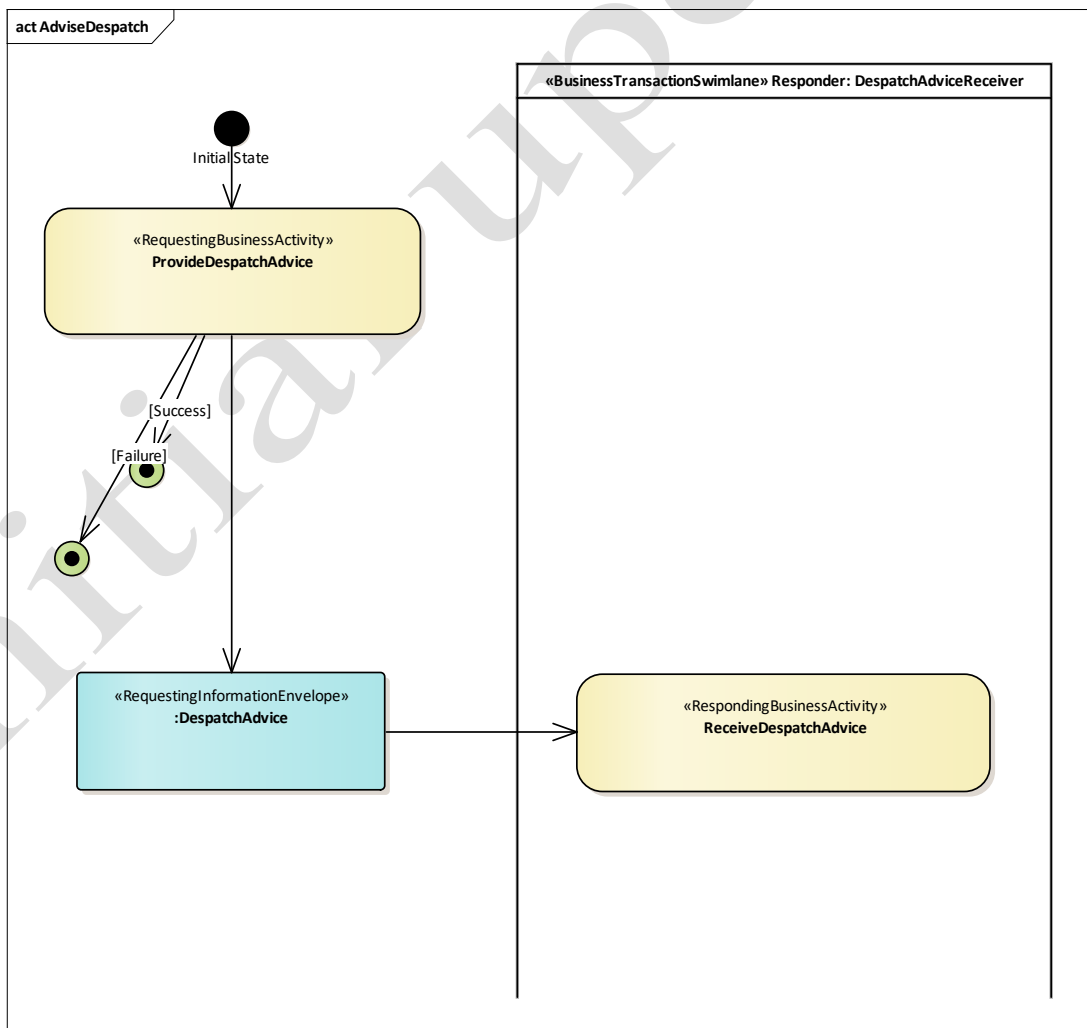


Figure 8-3 Activity Diagram Advise Despatch

8.2.2 Correct Despatch Advice (Business Transaction)

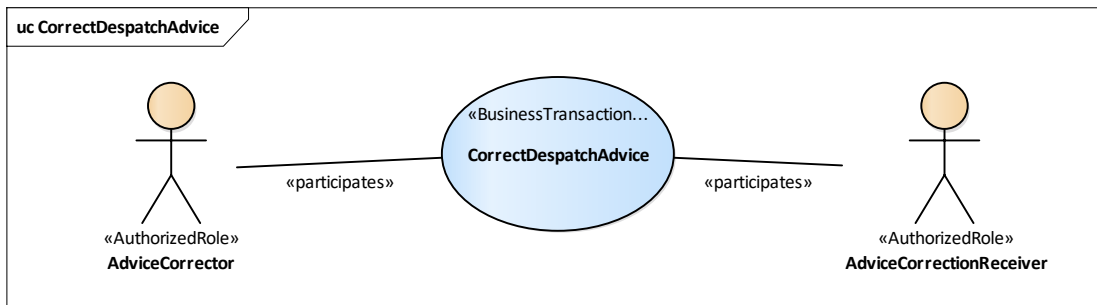


Figure 8-4 Business Transaction Use Case Diagram Correct Despatch Advice

Table 8-2 Business Transaction Use Case Description Correct Despatch Advice

| Identifier | Correct Despatch Advice |
|-------------------------|---|
| Business Message Type | Despatch Advice |
| Description | Once the goods have left the ship from location and a change occurs in the delivery or the delivery is cancelled, the Ship To is informed. |
| Partner Types | Ship From, Ship To |
| Authorized Roles | Advice Corrector, Advice Correction Receiver |
| Legal Implications | In certain cases (such as Ex-works terms) the Ship To may have taken responsibility for the custody of the goods when the Despatch Advice was sent. |
| Initial/Terminal Events | <ul style="list-style-type: none"> Initial: the shipment details are changed or the shipment is cancelled. Terminal: the ShipTo has received the corrected despatch advice. |
| Scope | Information exchange between Ship From and Ship To concerning the despatch of goods. |
| Boundary | |
| Constraints | |
| | |

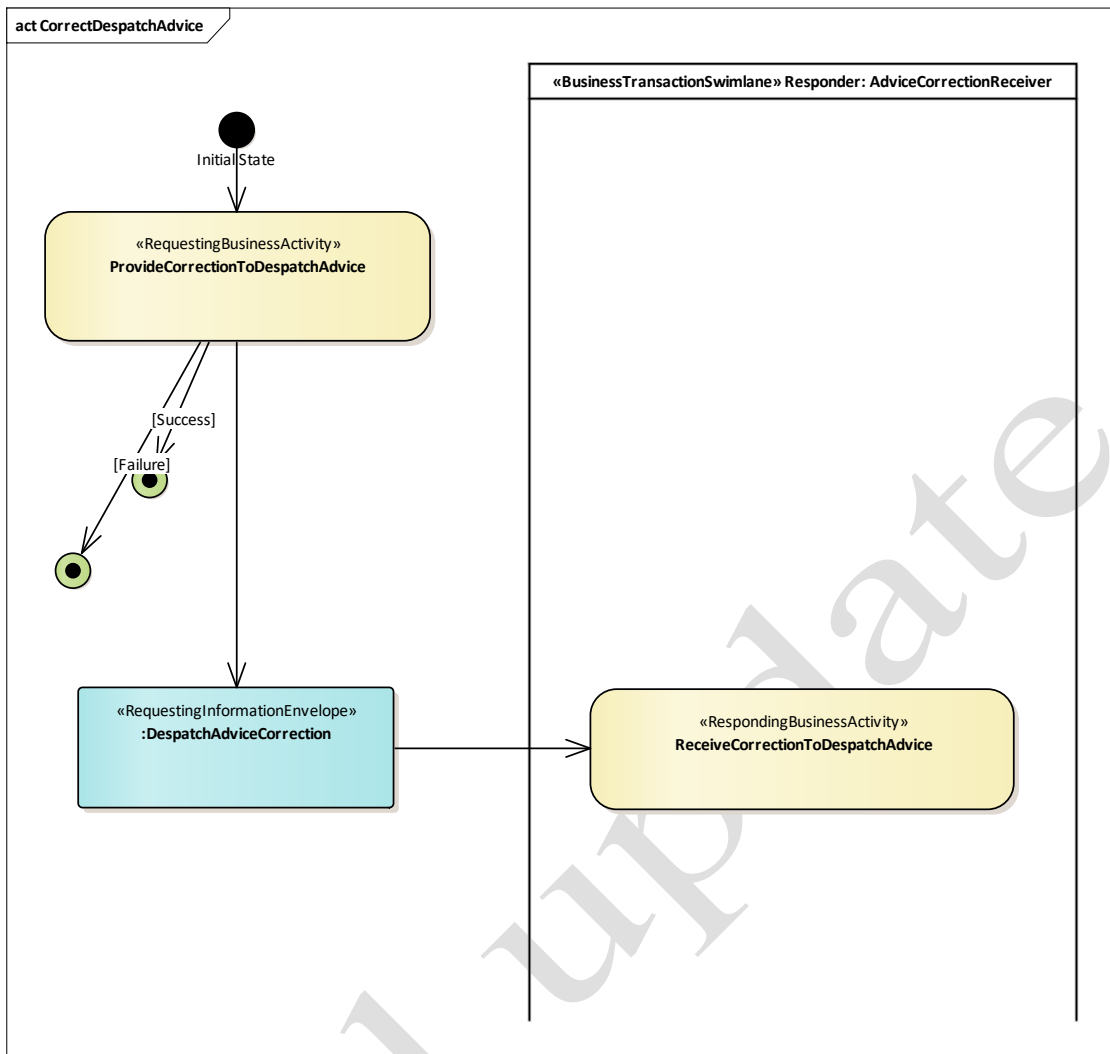


Figure 8-5 Activity Diagram Correct Despatch Advice

8.2.3 Advise Receipt (Business Transaction)

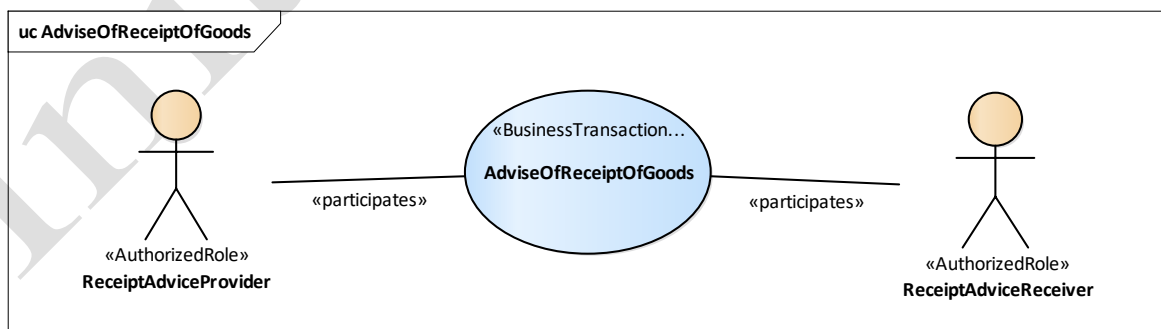


Figure 8-6 Business Transaction Use Case Diagram Advise Receipt

Table 8-3 Business Transaction Use Case Description Advise Receipt

| | |
|--------------------------------|--|
| Identifier | Advise Receipt |
| Business Message Type | Receiving Advice |
| Description | The Ship To prepares and sends a receiving advice to the Ship From to confirm reception of the goods and, if applicable, notify any discrepancies between the goods received and those announced in the despatch advice. Once the Ship From has received the receiving advice, the process ends. |
| Partner Types | Ship From, Ship To |
| Authorized Roles | Receipt Adviser, Receipt Receiver |
| Legal Implications | Ship To has taken responsibility for the custody of the goods. This may have effects on ownership or payment. The receiving advice document has an important legal value in the commercial process. |
| Initial/Terminal Events | <ul style="list-style-type: none"> • Initial: the shipment details are changed or the shipment is cancelled. • Terminal: the ShipTo has received the corrected despatch advice. |
| Scope | To report on the goods received by the Ship To. |
| Boundary | |
| Constraints | |

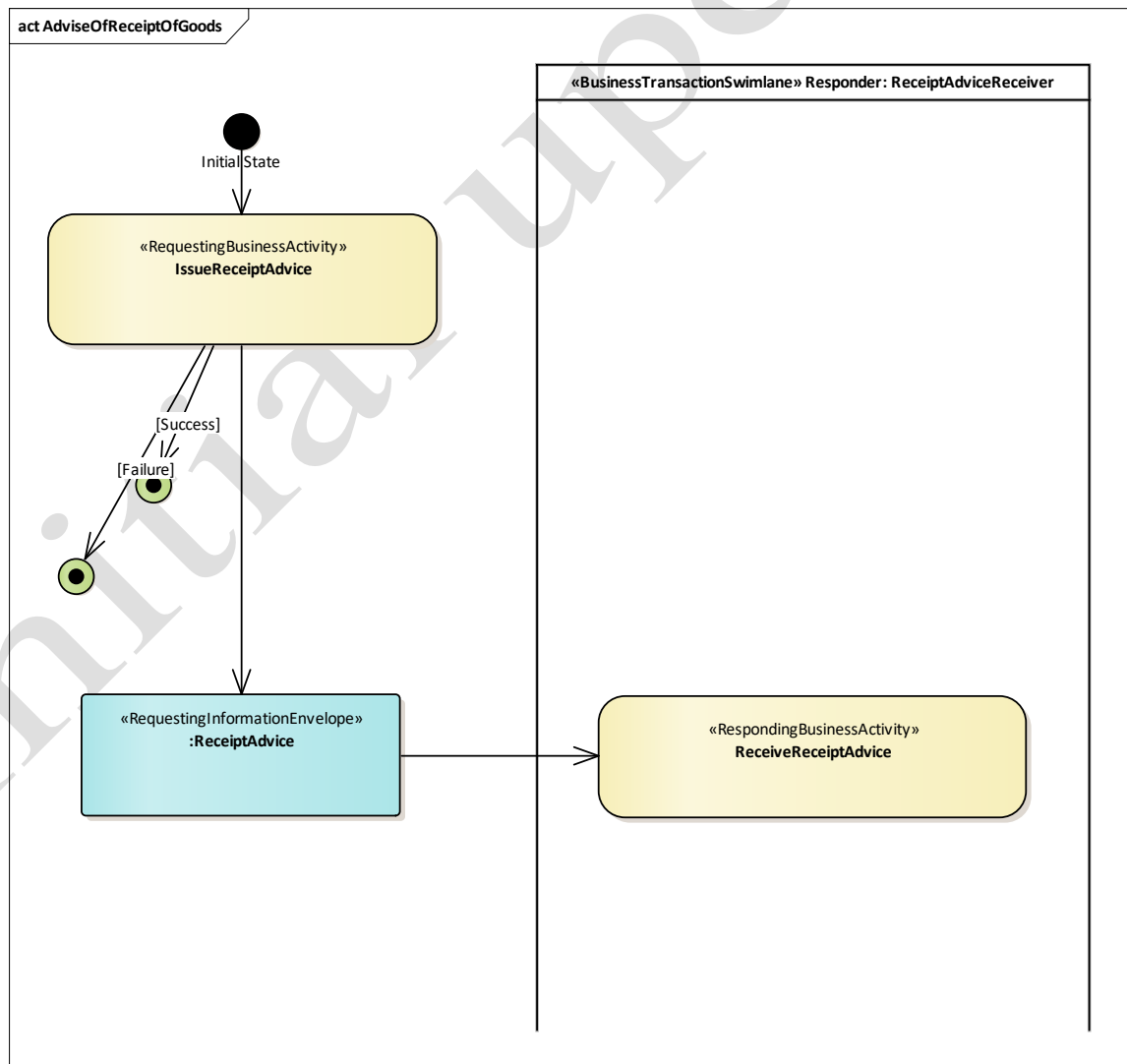


Figure 8-7 Activity Diagram Advise of Receipt of Goods

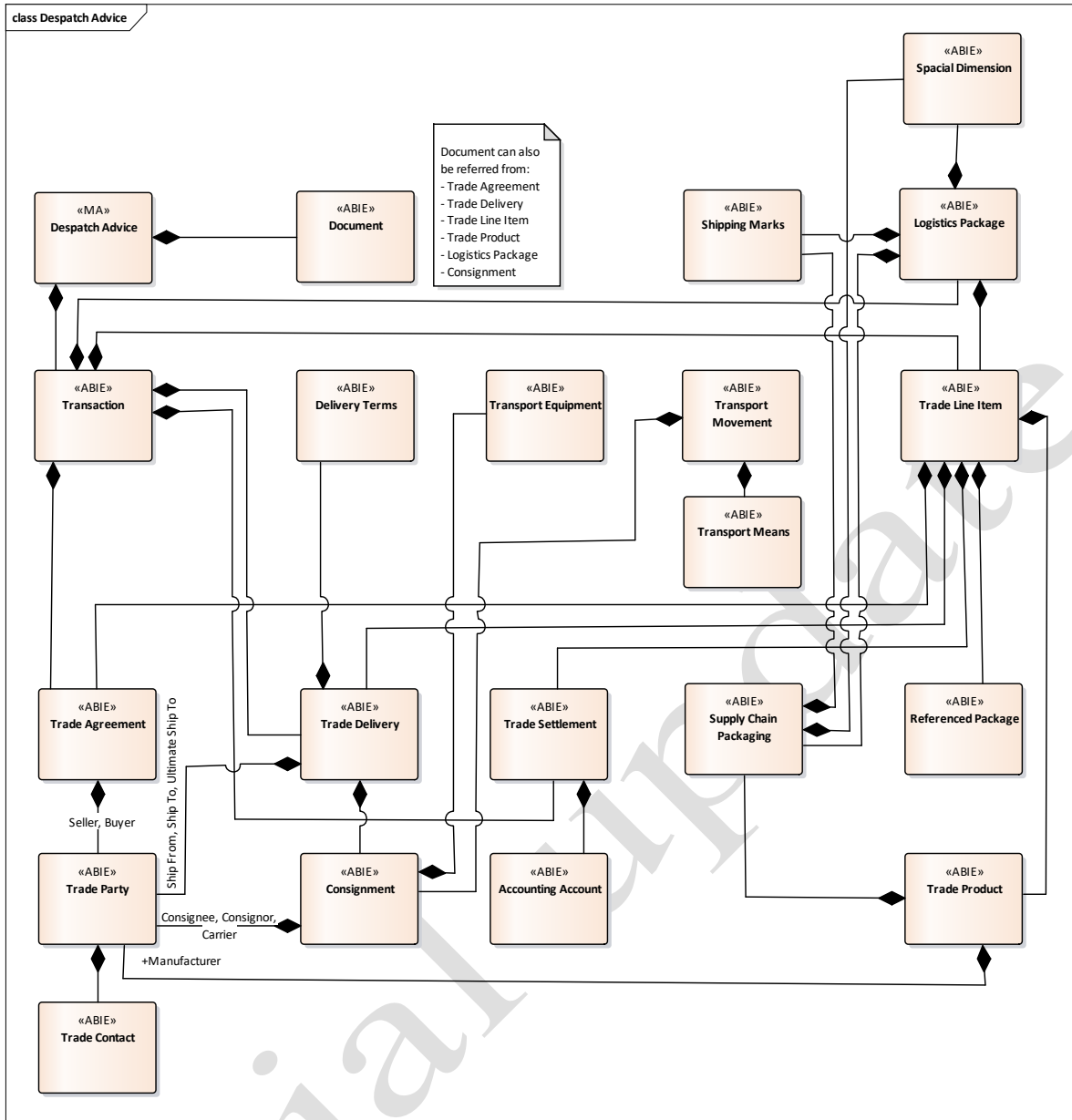


Figure 8-8 Business Entity Class Diagram – Despatch Advice

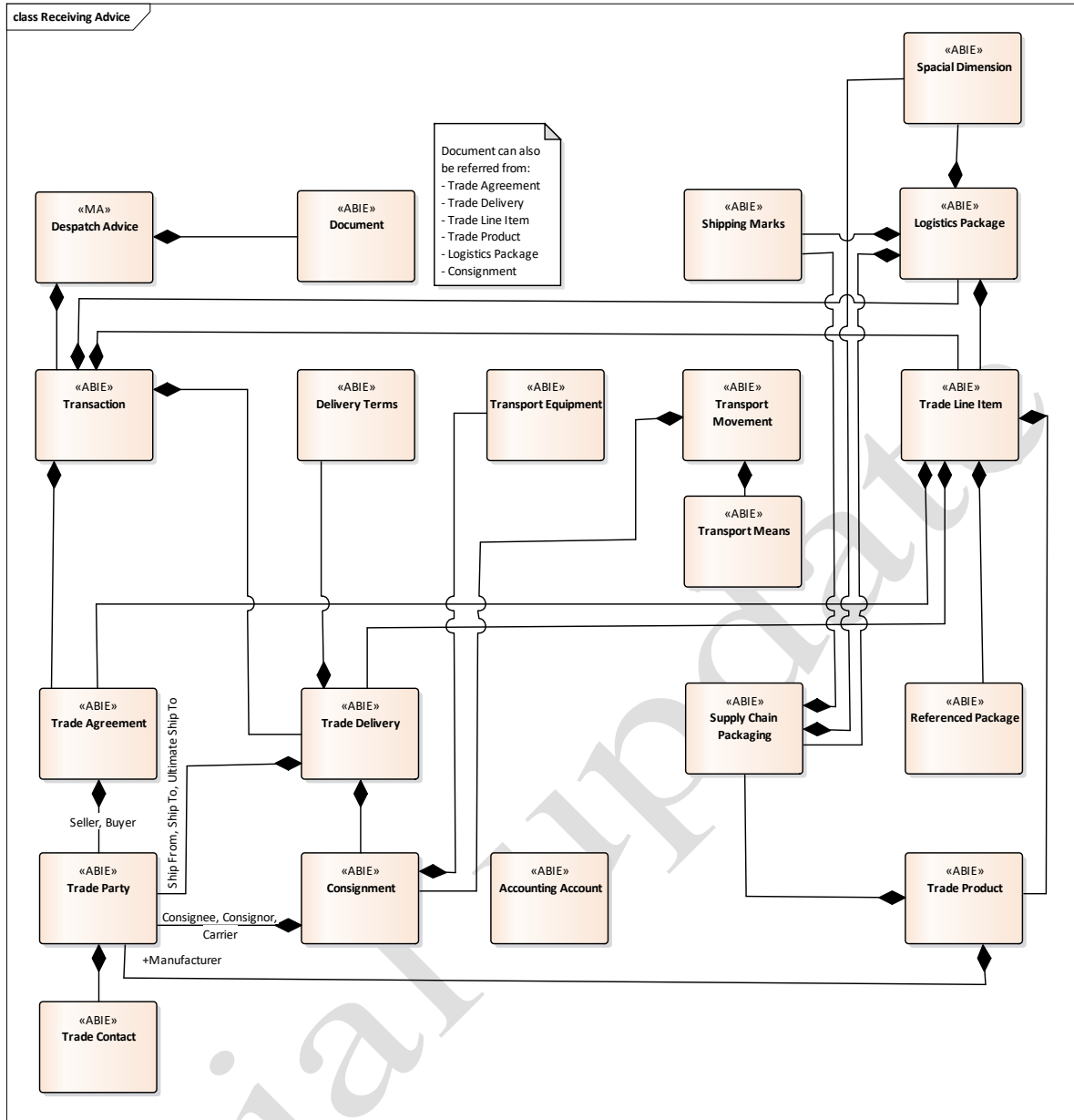


Figure 8-9 Business Entity Class Diagram – Receiving Advice

Note:

Compared to the Despatch Advice message, the Receiving Advice message does not contain the class “Trade Settlement”.

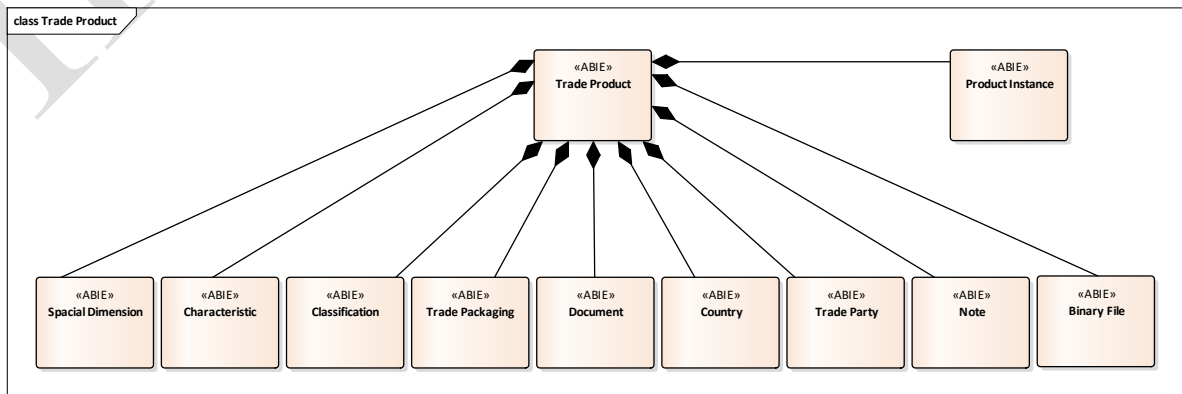


Figure 8-10 Business Entity Class Diagram – Trade Product

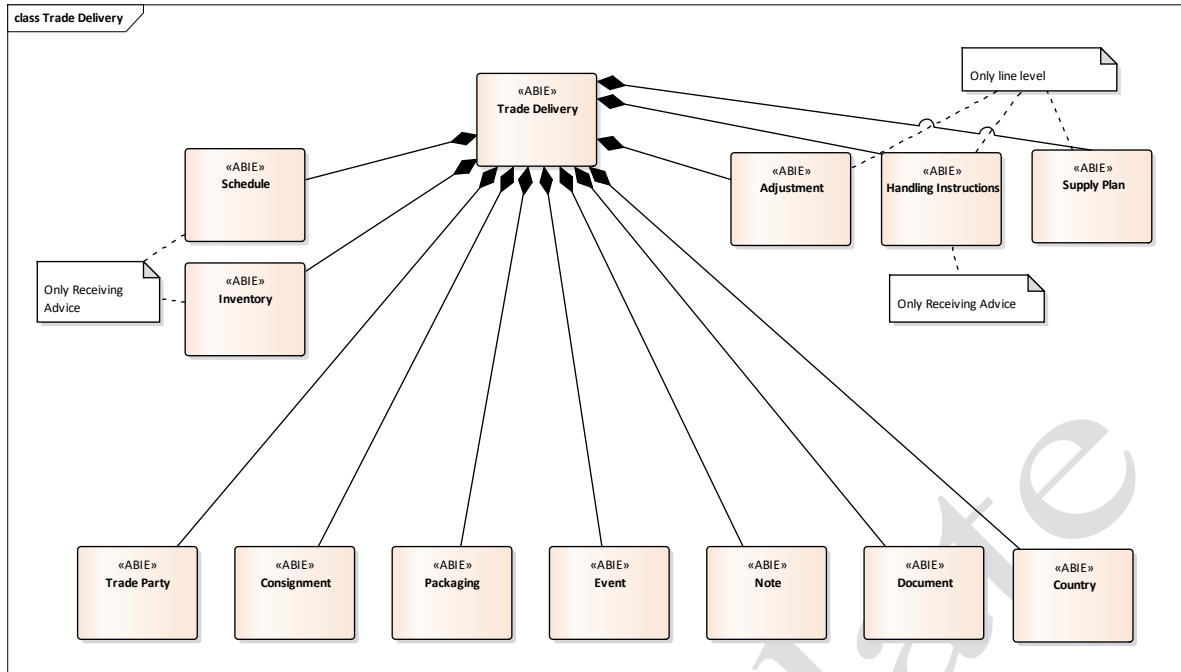


Figure 8-11 Business Entity Class Diagram – Trade Delivery

8.3 Business Documents

8.3.1 Despatch Advice

Note:

Only details of most important associations (assoc) are listed, Details of entities used in the associations can be found in the published CCL.

| Despatch Advice | | | | |
|-----------------|-----|-----------|-------------------------------|---|
| HEADER level | | | | |
| Entity | Min | Max | Exchanged Document Context | |
| Att | 0 | 1 | Transaction ID | The transaction identifier. |
| Att | 0 | 1 | Process Transaction Date Time | The date time when the transaction was processed. |
| Assoc | 0 | unbounded | Scenario parameter | A scenario context parameter specified for the document context. |
| Assoc | 0 | unbounded | Business Process parameter | A BIM context parameter specified for the document context. |
| Assoc | 0 | unbounded | BIM parameter | A BIM context parameter specified for the document context. |
| Assoc | 0 | unbounded | Application parameter | A application context parameter specified for the document context. |
| Assoc | 0 | unbounded | Guideline parameter | A guideline context parameter specified for the document context. |

| Despatch Advice | | | | |
|-----------------|-----|-----------|-------------------------------|--|
| Assoc | 0 | unbounded | Subset parameter | A subset context parameter specified for the document context. |
| Assoc | 0 | unbounded | Message standard parameter | A message context parameter specified for the document context. |
| Assoc | 0 | unbounded | User parameter | A user context parameter specified for the document context. |
| Entity | Min | Max | Exchanged Document | Data exchanged for a receiving advice between two or more parties in written, printed or electronic form. |
| Att | 1 | 1 | ID | The identifier. |
| Att | 0 | 1 | Version ID | The version identifier. |
| Att | 1 | 1 | Issue Date Time | The issuance date. |
| Att | 0 | 1 | Type Code | The type code. |
| Att | 0 | 1 | Status Code | The status code. |
| Att | 0 | unbounded | Response Request Type Code | A response requested type code. |
| Att | 0 | unbounded | Purpose Code | A purpose code. |
| Att | 0 | 1 | Purpose Text | The purpose (in text). |
| Att | 0 | 1 | Control Requirement Indicator | The indication that the document has control requirements. |
| Att | 0 | 1 | Copy Indicator | The indication that this document is a copy. |
| Att | 0 | unbounded | Name | A name. |
| Assoc | 0 | 1 | Issuer | The party that issues this document. |
| Assoc | 0 | unbounded | Note | A note included. |
| Entity | | | Trade Transaction | Trade line items, trade agreement and trade delivery details included, at header level, in a Receiving Advice trade transaction. |
| Att | 0 | unbounded | Shipment ID | A shipment identifier. |
| Assoc | 1 | 1 | Trade Agreement | The applicable trade agreement. |
| Assoc | 1 | 1 | Trade Settlement | The applicable trade settlement. |
| Assoc | 1 | 1 | Trade Delivery | The applicable trade delivery. |
| Assoc | 0 | unbounded | Logistics Package | Included logistics packages. |
| Entity | | | Trade Agreement | Contractual terms of a trade agreement for a receiving advice. |
| Att | 0 | unbounded | Seller Reference | A seller reference. |
| Att | 0 | 1 | Impact Code | The impact code. |

| Despatch Advice | | | | |
|-----------------|---|-----------|--|---|
| Att | 0 | 1 | Priority Code | The priority code. |
| Assoc | 0 | 1 | Buyer | The buyer. |
| Assoc | 0 | 1 | Seller | The seller. |
| Assoc | 0 | 1 | Delivery Terms | The delivery terms. |
| Assoc | 0 | unbounded | Additional Document | An additional referenced document. |
| Assoc | 0 | 1 | Buyer Order Document | The referenced buyer order. |
| Assoc | 0 | 1 | Seller Order Document | The referenced seller order. |
| Assoc | 0 | unbounded | Contract Document | A referenced contract. |
| Entity | | | Trade Delivery | Shipping arrangements and movement of goods and or services including despatch and delivery pertaining to a receiving advice. |
| Att | 0 | 1 | Status Code | The status code. |
| Att | 0 | unbounded | Goods Receipt Physical State Description | A description specifying the physical state of the goods. |
| Att | 0 | 1 | Goods Receipt Physical State Code | A code specifying the physical state of the goods. |
| Att | 0 | 1 | Final Delivery Indicator | The indication that the delivery is the final delivery. |
| Att | 0 | 1 | Pick-Up Availability Date Time | The date when this delivery is available for pick-up. |
| Assoc | 1 | 1 | Ship From Party | The ship from party. |
| Assoc | 1 | 1 | Ship To Party | The ship to party. |
| Assoc | 0 | 1 | Ultimate Ship To Party | The ultimate ship to party. |
| Assoc | 0 | unbounded | Additional Document | An additional referenced document. |
| Assoc | 0 | 1 | Shipment Schedule Document | The referenced shipment schedule document. |
| Assoc | 0 | 1 | Actual Despatch Event | The actual despatch event. |
| Assoc | 0 | 1 | Actual Loading Event | The actual loading event. |
| Assoc | 0 | 1 | Requested Delivery Event | The requested delivery event. |
| Assoc | 0 | 1 | Confirmed Release Event | The confirmed release event. |
| Assoc | 0 | 1 | Planned Delivery Event | The planned delivery event. |
| Assoc | 0 | unbounded | Consignment | A related consignment. |
| Assoc | 0 | unbounded | Included Supply Chain Packaging | Included supply chain packaging. |
| Assoc | 0 | unbounded | Note | An included note. |
| Entity | | | Trade Settlement | The trade settlement applicable to the trade transaction. |
| Att | 0 | 1 | Price Currency | The price currency. |
| Assoc | 0 | unbounded | Purchase Accounting Account | A purchase accounting account. |
| Assoc | 0 | unbounded | Sales Accounting Account | A sales accounting account. |
| Assoc | 0 | 1 | Applicable Tax | The applicable tax. |
| Assoc | 0 | 1 | Monetary Summation | The monetary summation. |

| Despatch Advice | | | | |
|-----------------|---|-----------|--|---|
| Assoc | 0 | 1 | Payment Terms | The payment terms. |
| Line level | | | | |
| Entity | | | Trade Line Item | Information specific to a trade line item. |
| Assoc | 1 | 1 | Associated Document Line | The associated document line. |
| Assoc | 0 | 1 | Trade Agreement | The specified trade agreement. |
| Assoc | 0 | 1 | Trade Delivery | The specified trade delivery. |
| Assoc | 0 | 1 | Trade Settlement | The specified trade settlement. |
| Assoc | 0 | unbounded | Trade Product | A trade product. |
| Assoc | 0 | unbounded | Referenced Package | A referenced logistics package. |
| Entity | | | Trade Agreement | Contractual terms of a supply chain trade agreement for a receiving advice line. |
| Att | 0 | unbounded | Seller Reference | A seller reference. |
| Att | 0 | unbounded | Buyer Reference | A buyer reference. |
| Att | 0 | unbounded | Reference | A reference. |
| Att | 0 | 1 | Impact Code | The impact code. |
| Att | 0 | 1 | Priority Code | The priority code. |
| Assoc | 0 | unbounded | Additional Document | An additional referenced document. |
| Assoc | 0 | 1 | Buyer Order Document | The referenced buyer order. |
| Assoc | 0 | 1 | Seller Order Document | The referenced seller order. |
| Assoc | 0 | unbounded | Contract Document | A referenced contract. |
| Assoc | 0 | unbounded | Promotional Deal Document | A referenced promotional deal. |
| Assoc | 0 | 1 | Product Net Price | The net price for the product. |
| Entity | | | Trade Delivery | Shipping arrangements and movement of goods and or services including despatch and delivery pertaining to a receiving advice. |
| Att | 0 | 1 | Status Code | The status code. |
| Att | 0 | 1 | Billed Quantity | The quantity billed. |
| Att | 0 | unbounded | Goods Receipt Physical State Description | A description specifying the physical state of the goods. |
| Att | 0 | 1 | Goods Receipt Physical State Code | A code specifying the physical state of the goods. |
| Att | 0 | 1 | Charge Free Quantity | The charge free quantity. |
| Att | 0 | 1 | Despatched Quantity | The quantity despatched. |
| Att | 0 | 1 | Package Quantity | The number of packages. |
| Att | 0 | 1 | Requested Quantity | The requested quantity. |
| Att | 0 | 1 | Per Package Unit Quantity | The number of units per package. |
| Att | 0 | 1 | Product Unit Quantity | The number of product units. |

| Despatch Advice | | | | |
|---|---|-----------|-------------------------------------|--|
| Att | 0 | 1 | Remaining Requested Quantity | The remaining requested quantity. |
| Att | 0 | 1 | Theoretical Weight Measure | The theoretical weight. |
| Att | 0 | 1 | Gross Weight Measure | The gross weight (mass). |
| Att | 0 | 1 | Net Weight Measure | The net weight (mass). |
| Att | 0 | 1 | Ultimate Ship To Delivery Date Time | The date for this delivery to the ultimate ship to party. |
| Assoc | 0 | 1 | Ship From Party | The ship from party. |
| Assoc | 0 | 1 | Ship To Party | The ship to party. |
| Assoc | 0 | 1 | Ultimate Ship To Party | The ultimate ship to party. |
| Assoc | 0 | 1 | Delivery Adjustment | The delivery adjustment. |
| Assoc | 0 | unbounded | Handling Instructions | Handling instructions. |
| Assoc | 0 | unbounded | Supply Plan | A supply plan. |
| Assoc | 0 | 1 | Actual Despatch Event | The actual despatch event. |
| Assoc | 0 | 1 | Actual Pickup Event | The actual pickup event. |
| Assoc | 0 | 1 | Requested Delivery Event | The requested delivery event. |
| Assoc | 0 | unbounded | Consignment | A related consignment. |
| Assoc | 0 | unbounded | Included Referenced Package | Included Referenced Package |
| Entity | | | Trade Settlement | The trade settlement applicable to the trade transaction. |
| Assoc | 0 | unbounded | Purchase Accounting Account | A purchase accounting account. |
| Assoc | 0 | unbounded | Sales Accounting Account | A sales accounting account. |
| Assoc | 0 | 1 | Applicable Tax | The applicable tax. |
| Assoc | 0 | 1 | Monetary Summation | The monetary summation. |
| Details of most important associated entities | | | | |
| Entity | | | Consignment | A separately identifiable collection of goods items to be transported or available to be transported from one consignor to one consignee in a Cross Industry (CI) supply chain via one or more modes of transport under a single transport contract. |
| Att | 0 | unbounded | Associated Invoice Amount | An associated monetary value of an invoice. |
| Att | 0 | 1 | Declared Value For Customs Amount | The monetary value declared for customs purposes. |
| Att | 0 | 1 | Total Charge Amount | The total monetary value of all freight and other service charges. |
| Att | 0 | 1 | Package. Quantity | The number of packages. |

| Despatch Advice | | | | |
|-----------------|---|-----------|--|--|
| Att | 0 | unbounded | Gross Weight | A gross weight (mass) which includes the weight of packaging but which excludes the weight of any transport equipment. |
| Att | 0 | unbounded | Net Weight | A net weight (mass) which excludes the weight of packaging and that of any transport equipment. |
| Att | 0 | unbounded | Gross Volume | A gross volume. |
| Att | 0 | 1 | Net Volume | The net volume which excludes all packaging. |
| Att | 0 | unbounded | Chargeable Weight | A chargeable weight. |
| Assoc | 0 | 1 | Consignor | The consignor party. |
| Assoc | 0 | 1 | Consignee | The consignee party. |
| Assoc | 0 | unbounded | Logistics Transport Movement | A logistics transport movement |
| Assoc | 0 | 1 | Customs Import Agent | The party acting as an agent with respect to the customs or other regulatory import procedures. |
| Assoc | 0 | 1 | Customs Export Agent | The party acting as an agent with respect to the customs or other regulatory export procedures. |
| Assoc | 0 | 1 | Carrier | The carrier party. |
| Assoc | 0 | 1 | Transport Contract | The referenced transport contract document, such as an air waybill or a sea waybill. |
| Assoc | 0 | unbounded | Utilized Transport Equipment | A piece of utilized transport equipment. |
| Assoc | 0 | 1 | Freight Forwarder | The freight forwarder party. |
| Assoc | 0 | unbounded | Grouping Centre | A grouping centre party. |
| Assoc | 0 | unbounded | Consignment Item | An included consignment item. |
| Assoc | 0 | unbounded | Associated Referenced Document | An associated referenced document, such as the certificate of origin or phyto certificate. |
| Assoc | 0 | 1 | Applicable Transport Cargo Insurance | The applicable transport cargo insurance. |
| Assoc | 0 | 1 | Applicable Cross-Border Customs Valuation | The applicable cross-border customs valuation. |
| Assoc | 0 | unbounded | Applicable Cross-Border Regulatory Procedure | A applicable cross-border regulatory procedure. |
| Assoc | 0 | 1 | Transit Location | The transit location. |
| Entity | | | Document Line | A document line for a receiving advice line. |
| Att | 1 | 1 | ID | The identifier. |
| Att | 0 | 1 | Status Code | The status code. |

| Despatch Advice | | | | |
|-----------------|---|-----------|-----------------------------------|--|
| Att | 0 | 1 | Status Reason Code | The line status reason code. |
| Assoc | 0 | unbounded | Note | An included note. |
| Entity | | | Logistics Package | A self-contained wrapping or container within which goods are contained, for this receiving advice line. |
| Att | 0 | 1 | ID | The identifier. |
| Att | 0 | 1 | Global ID | The global identifier. |
| Att | 0 | 1 | Parent ID | The parent identifier.. |
| Att | 0 | 1 | Type Code | The type code |
| Att | 0 | 1 | Type Text | The type (in text). |
| Att | 0 | 1 | Level Code | The package level code. |
| Att | 0 | 1 | Description | The description. |
| Att | 0 | 1 | Gross Volume | The gross volume. |
| Att | 0 | 1 | Gross Weight | The gross weight (mass). |
| Att | 0 | unbounded | Information | Information. |
| Att | 0 | 1 | Item Quantity | The number of logistics package at item level. |
| Att | 0 | 1 | Net Weight | The net weight (mass). |
| Att | 0 | 1 | Nominal Gross Volume | The nominal gross volume. |
| Att | 0 | 1 | Nominal Gross Weight | The nominal gross weight (mass). |
| Att | 0 | 1 | Per Package Unit Quantity | The number of units per package. |
| Att | 0 | 1 | Sequence Number | The sequence number. |
| Att | 0 | 1 | Series End ID | The identifier of the end of a series of packages within this logistics package. |
| Att | 0 | 1 | Series Start ID | The identifier of the start of a series of packages within this logistics package. |
| Assoc | 0 | unbounded | Shipping Marks | Physical shipping marks and barcode information. |
| Assoc | 0 | unbounded | Included Trade Line Item | A supply chain trade line item included in this logistics package. |
| Assoc | 0 | 1 | Linear Spatial Dimension | The linear spatial dimensions. |
| Assoc | 0 | unbounded | Used Supply Chain Packaging | Supply chain packaging used for this logistics package. |
| Assoc | 0 | unbounded | Despatch Note Associated Document | A despatch note associated with this logistics package. |
| Assoc | 0 | unbounded | Returnable Asset Instructions | Returnable asset instructions. |
| | | | Logistics Transport Equipment | A piece of equipment used to hold, protect or secure cargo for logistics purposes. |

| Despatch Advice | | | | |
|-----------------|---|-----------|------------------------------|--|
| Att | 0 | 1 | Size/Type Code | The code specifying the characteristic or characteristics of this piece of transport equipment, such as the ISO 6346 transport equipment size and type code. |
| | | | Logistics Transport Means | A piece of equipment used to hold, protect or secure cargo for logistics purposes. |
| Att | 0 | 1 | Type Code | The code specifying the type of logistics means of transport (Reference UNECE Recommendation 28). |
| Entity | | | Logistics Transport Movement | The conveyance (physical carriage) of goods or other objects used for logistics transport purposes. |
| Att | 0 | 1 | Stage Code | The code specifying the stage of this logistics transport movement. |
| Att | 0 | 1 | Mode Code | The code specifying the mode, such as by air, sea, rail, road or inland waterway, for this logistics transport movement. |
| Att | 0 | 1 | Mode Text | The mode, expressed as text, of this logistics transport movement. |
| Att | 0 | 1 | Transit Direction Code | The code specifying the transit direction of this logistics transport movement. |
| Entity | | | Product | Any tangible output or service produced by human or mechanical effort or by a natural process for Cross Industry (CI) trade purposes. |
| Att | 0 | 1 | ID | The identifier. |
| Att | 0 | 1 | Global ID | The global identifier. |
| Att | 0 | 1 | Seller Assigned ID | The seller assigned identifier. |
| Att | 0 | 1 | Buyer Assigned ID | The buyer assigned identifier. |
| Att | 0 | 1 | Manufacturer Assigned ID | The manufacturer assigned identifier. |
| Att | 0 | unbounded | Name | A name. |
| Att | 0 | 1 | Trade Name | The trade name. |
| Att | 0 | unbounded | Description | A description. |
| Att | 0 | 1 | Type Code | The type code. |

| Despatch Advice | | | | |
|-----------------|---|-----------|--|---|
| Att | 0 | 1 | Net Weight | The net weight (mass). |
| Att | 0 | 1 | Gross Weight | The gross weight (mass). |
| Att | 0 | 1 | Drained Net Weight | The drained net weight (mass). |
| Att | 0 | 1 | Brand Name | The brand name. |
| Att | 0 | 1 | Sub-Brand Name | The sub-brand name. |
| Att | 0 | unbounded | Product GroupID | An product group identifier. |
| Att | 0 | 1 | Area Density | The area density, such as paper density in grams per square metre (gsm). |
| Att | 0 | 1 | Colour Code | The colour code. |
| Att | 0 | unbounded | Colour Description | A description of the colour. |
| Att | 0 | unbounded | Use Description | A description of a use. |
| Att | 0 | unbounded | Designation | A designation. |
| Att | 0 | unbounded | End Item Name | An end item name. |
| Att | 0 | 1 | Latest Product Data Change Date Time | The date of the latest change in the product data. |
| Att | 0 | unbounded | End Item Type Code | A code specifying a type of end item. |
| Att | 0 | 1 | Variable Measure Indicator | The indication that instances of the product have a variable measure, such as weight, length or volume. |
| Att | 0 | unbounded | Additional Description | An additional description. |
| Att | 0 | unbounded | Batch ID | A batch identifier. |
| Att | 0 | unbounded | Common Name | A common name. |
| Att | 0 | unbounded | Concise Description | A concise description. |
| Att | 0 | 1 | Configurable Indicator | The indication that the product is configurable. |
| Att | 0 | 1 | Content Unit Quantity | The number of content units. |
| Att | 0 | unbounded | Customer Assigned ID | A customer assigned identifier. |
| Att | 0 | unbounded | Gross Volume | A gross volume. |
| Att | 0 | unbounded | Industry Assigned ID | An industry assigned identifier. |
| Att | 0 | unbounded | Model ID | A model identifier. |
| Att | 0 | unbounded | Net Volume | A net volume. |
| Att | 0 | 1 | Recycling Type Code | The recycling code. |
| Att | 0 | unbounded | Status Code | A status code. |
| Att | 0 | unbounded | Unit Type Code | A unit type code. |
| Assoc | 0 | unbounded | Applicable Product Characteristic | A product characteristic. |
| Assoc | 0 | unbounded | Applicable Material Goods Characteristic | A material goods characteristic. |
| Assoc | 0 | unbounded | Designated Product Classification | A designated product classification. |
| Assoc | 0 | unbounded | Individual Trade Product Instance | An individual instance. |

| Despatch Advice | | | | |
|-----------------|---|-----------|---|--|
| Assoc | 0 | unbounded | Certification Evidence Reference | A referenced certification evidence document. |
| Assoc | 0 | unbounded | Inspection Reference | A referenced inspection document. |
| Assoc | 0 | 1 | Origin Trade Country | The country of origin. |
| Assoc | 0 | 1 | Linear Spatial Dimension | Linear spatial dimensions. |
| Assoc | 0 | 1 | Minimum Linear Spatial Dimension | Minimum linear spatial dimensions. |
| Assoc | 0 | 1 | Maximum Linear Spatial Dimension | Maximum linear spatial dimensions. |
| Assoc | 0 | 1 | Manufacturer Party | The party who is the manufacturer. |
| Assoc | 0 | 1 | MSDS Reference | The referenced Material Safety Data Sheet (MSDS) document. |
| Assoc | 0 | unbounded | Additional Reference | An additional referenced document. |
| Assoc | 0 | unbounded | Information | An information note. |
| Assoc | 0 | 1 | Brand Owner Party | The party that owns the brand. |
| Assoc | 0 | 1 | Legal Rights Owner Party | The party that owns the legal rights. |
| Assoc | 0 | unbounded | Presentation Specified Binary File | A binary presentation file. |
| Assoc | 0 | unbounded | Buyer Supplied Parts Reference Document | A buyer referenced supplied parts document. |
| Entity | | | Referenced Package | A self-contained wrapping or container within which goods are contained, for this receiving advice line. |
| Att | 0 | 1 | ID | The identifier. |
| Att | 0 | 1 | Global ID | The global identifier. |
| Att | 0 | 1 | Parent ID | The parent identifier.. |
| Att | 0 | 1 | Type Code | The type code |
| Att | 0 | 1 | Type Text | The type (in text). |
| Att | 0 | 1 | Level Code | The package level code. |
| Att | 0 | 1 | Description | The description. |
| Att | 0 | 1 | Gross Volume | The gross volume. |
| Att | 0 | 1 | Gross Weight | The gross weight (mass). |
| Att | 0 | unbounded | Information | Information. |
| Att | 0 | 1 | Item Quantity | The number of logistics package at item level. |
| Att | 0 | 1 | Net Weight | The net weight (mass). |
| Att | 0 | 1 | Nominal Gross Volume | The nominal gross volume. |
| Att | 0 | 1 | Nominal Gross Weight | The nominal gross weight (mass). |
| Att | 0 | 1 | Per Package Unit Quantity | The number of units per package. |
| Att | 0 | 1 | Sequence Number | The sequence number. |

| Despatch Advice | | | | |
|-----------------|---|-----------|-------------------------------------|--|
| Att | 0 | 1 | Series End ID | The identifier of the end of a series of packages within this logistics package. |
| Att | 0 | 1 | Series Start ID | The identifier of the start of a series of packages within this logistics package. |
| Entity | | | Supply Chain Packaging | Any material with which supply chain goods are packaged, such as a box or bubble wrap. |
| Att | 0 | 1 | Type Code | The code specifying the type of packaging. |
| Att | 0 | 1 | Type Text | The type of packaging. |
| Att | 0 | unbounded | Description | A description. |
| Att | 0 | unbounded | Condition Code | A code specifying the condition . |
| Att | 0 | unbounded | Disposal Method Code | A code specifying the disposal method . |
| Att | 0 | 1 | Capacity Measure | The measure of the capacity . |
| Att | 0 | unbounded | Weight | A measure of the weight . |
| Att | 0 | unbounded | Instruction Code | A code specifying an instruction. |
| Att | 0 | 1 | Level Code | The code specifying a level of packaging. |
| Att | 0 | 1 | Sequence Number | The number of a sequence of the packaging. |
| Att | 0 | 1 | Maximum Stackability Quantity | The number of packaging units which can be stacked on top of each other. |
| Att | 0 | 1 | Maximum Stackability Weight | The measure of the maximum stackability weight. |
| Att | 0 | 1 | Returnable Indicator | The indication that the packaging is returnable. |
| Att | 0 | 1 | Customer Facing Total Unit Quantity | The number of units facing the customer, such as placed on a retail shelf. |
| Att | 0 | unbounded | Total Unit Quantity | A number of units contained in this packaging. |
| Att | 0 | 1 | Layer Total Unit Quantity | The number of units in a layer. |
| Att | 0 | 1 | Content Layer Quantity | The number of content layers that are or may be packaged with this packaging, such as the number of layers of product on a pallet. |
| Att | 0 | unbounded | Additional Instruction Code | A code specifying an additional instruction. |
| Att | 0 | 1 | Additional Instruction Indicator | The indication that there is an additional instruction. |

| Despatch Advice | | | | |
|-----------------|---|-----------|-------------------------------|--|
| Assoc | 0 | 1 | Dimensions | The linear spatial dimensions . |
| Assoc | 0 | 1 | Minimum Dimensions | The minimum linear spatial dimensions. |
| Assoc | 0 | 1 | Maximum Dimensions | The maximum linear spatial dimensions. |
| Assoc | 0 | unbounded | Marking | A marking specified for this packaging, such as an inscription, stamp or label to indicate date etc. |
| Assoc | 0 | unbounded | Goods Characteristic | Material goods characteristic applicable to this packaging. |
| Assoc | 0 | unbounded | Disposal Instructions | Disposal instructions. |
| Assoc | 0 | unbounded | Returnable Asset Instructions | Returnable asset instructions. |

8.3.2 Receiving Advice

Note:

Only details of most important associations (assoc) are listed, Details of entities used in the associations can be found in the published CCL.

| Receiving Advice | | | | |
|------------------|-----|-----------|-------------------------------|---|
| HEADER level | | | | |
| Entity | Min | Max | Exchanged Document Context | |
| Att | 0 | 1 | Transaction ID | The transaction identifier. |
| Att | 0 | 1 | Process Transaction Date Time | The date time when the transaction was processed. |
| Assoc | 0 | unbounded | Scenario parameter | A scenario context parameter specified for the document context. |
| Assoc | 0 | unbounded | Business Process parameter | A BIM context parameter specified for the document context. |
| Assoc | 0 | unbounded | BIM parameter | A BIM context parameter specified for the document context. |
| Assoc | 0 | unbounded | Application parameter | A application context parameter specified for the document context. |
| Assoc | 0 | unbounded | Guideline parameter | A guideline context parameter specified for the document context. |
| Assoc | 0 | unbounded | Subset parameter | A subset context parameter specified for the document context. |
| Assoc | 0 | unbounded | Message standard parameter | A message context parameter specified for the document context. |

| Receiving Advice | | | | |
|------------------|-----|-----------|-------------------------------|---|
| Assoc | 0 | unbounded | User parameter | A user context parameter specified for the document context. |
| Entity | Min | Max | Exchanged Document | Data exchanged for a receiving advice between two or more parties in written, printed or electronic form. |
| Att | 1 | 1 | ID | The identifier. |
| Att | 0 | 1 | Global ID | The global identifier. |
| Att | 0 | unbounded | Customs ID | An identifier for customs purposes. |
| Att | 0 | 1 | Revision ID | The identifier of the revision. |
| Att | 0 | 1 | Previous Revision ID | The identifier of the previous revision of this document. |
| Att | 0 | unbounded | Sender Assigned ID | A sender assigned identifier. |
| Att | 0 | unbounded | Recipient Assigned ID | A recipient assigned identifier. |
| Att | 0 | unbounded | Trader Assigned ID | A trader assigned identifier. |
| Att | 0 | unbounded | Suffix ID | A suffix identifier. |
| Att | 0 | 1 | Version ID | The version identifier. |
| Att | 0 | 1 | Item ID | The identifier of an item in this document. |
| Att | 0 | 1 | Page ID | The identifier of a specific page in this document. |
| Att | 1 | 1 | Issue Date Time | The issuance date. |
| Att | 0 | 1 | Acceptance Date Time | The acceptance date. |
| Att | 0 | 1 | Cancellation Date Time | The cancellation date. |
| Att | 0 | unbounded | Rejection Response Date Time | A rejection response date. |
| Att | 0 | 1 | Submission Date Time | The formal submission date. |
| Att | 0 | 1 | Revision Date Time | The revision date. |
| Att | 0 | unbounded | Response Date Time | A response date. |
| Att | 0 | 1 | Type Code | The type code. |
| Att | 0 | 1 | Urgency Code | The urgency code. |
| Att | 0 | 1 | Status Code | The status code. |
| Att | 0 | unbounded | Amendment Purpose Code | An amendment purpose code. |
| Att | 0 | unbounded | Language Code | An identifier for a language used. |
| Att | 0 | 1 | Category Code | The category code. |
| Att | 0 | unbounded | Response Request Type Code | A response requested type code. |
| Att | 0 | unbounded | Response Reason Code | A response reason code. |
| Att | 0 | unbounded | Purpose Code | A purpose code. |
| Att | 0 | 1 | Purpose Text | The purpose (in text). |
| Att | 0 | 1 | Control Requirement Indicator | The indication that the document has control requirements. |

| Receiving Advice | | | | |
|------------------|---|-----------|-----------------------------------|--|
| Att | 0 | 1 | Copy Indicator | The indication that this document is a copy. |
| Att | 0 | 1 | Electronic Presentation Indicator | The indication that this document is presented in an electronic format. |
| Att | 0 | 1 | Copy Issued Quantity | The number of copies issued. |
| Att | 0 | 1 | Copy Required Quantity | The number of copies required. |
| Att | 0 | 1 | Original Issued Quantity | The number of originals issued. |
| Att | 0 | 1 | Original Required Quantity | The number of originals required. |
| Att | 0 | 1 | Total Page Quantity | The total number of pages. |
| Att | 0 | 1 | Item Quantity | The number of line items in this document. |
| Att | 0 | 1 | Line Count | The count of the number of lines in this document. |
| Att | 0 | unbounded | Description | A description. |
| Att | 0 | unbounded | Disposition Text | A disposition. |
| Att | 0 | unbounded | Information | Information about this document. |
| Att | 0 | unbounded | Remark | A remark. |
| Att | 0 | unbounded | Summary Information | Summary information. |
| Att | 0 | unbounded | Header Information | Information at header level of this document. |
| Att | 0 | unbounded | Name | A name. |
| Att | 0 | unbounded | Attached Binary Object | A binary object that is attached or otherwise appended to this document. |
| Assoc | 0 | 1 | Issuer | The party that issues this document. |
| Assoc | 0 | 1 | Sender | The party that sends this document. |
| Assoc | 0 | unbounded | Recipient | A party that receives this document. |
| Assoc | 0 | 1 | Owner | The party that owns this document. |
| Assoc | 0 | unbounded | Agent | A party representing another party. |
| Assoc | 0 | 1 | First Signatory Authentication | The first or primary signature that authenticates this document. |
| Assoc | 0 | unbounded | Referenced Document | Other referenced documents. |
| Assoc | 0 | unbounded | Note | A note included. |
| Assoc | 0 | unbounded | Attached File | A binary file attached to this document. |
| Assoc | 0 | 1 | Effective Period | The effective period. |

| Receiving Advice | | | | |
|------------------|---|-----------|--|--|
| Entity | | | Trade Transaction | Trade line items, trade agreement and trade delivery details included, at header level, in a Receiving Advice trade transaction. |
| Att | 0 | unbounded | ID | An identifier. |
| Att | 0 | unbounded | Shipment ID | A shipment identifier. |
| Att | 0 | 1 | Type Code | The type code. |
| Att | 0 | unbounded | Information | Information. |
| Att | 0 | 1 | Line Item Quantity | The number of line items. |
| Att | 0 | 1 | Sales Agent Assigned ID | The identifier assigned by the sales agent. |
| Assoc | 1 | 1 | Trade Agreement | The applicable trade agreement. |
| Assoc | 1 | 1 | Trade Delivery | The applicable trade delivery. |
| Assoc | 0 | unbounded | Logistics Package | Included logistics packages. |
| Entity | | | Trade Agreement | Contractual terms of a trade agreement for a receiving advice. |
| Att | 0 | unbounded | Seller Reference | A seller reference. |
| Att | 0 | unbounded | Buyer Reference | A buyer reference. |
| Att | 0 | unbounded | Reference | A reference. |
| Att | 0 | 1 | Impact Code | The impact code. |
| Att | 0 | 1 | Priority Code | The priority code. |
| Att | 0 | 1 | Incremental Product Orderable Quantity | The incremental product orderable quantity. |
| Att | 0 | 1 | Information Use Restriction Indicator | The indication that the use of the information provided is restricted. |
| Att | 0 | 1 | Product Free of Charge Indicator | The indication that the product is free of charge. |
| Att | 0 | 1 | Product Made To Order Indicator | The indication that the product is manufactured, built or customized only after receipt of order. |
| Att | 0 | 1 | Product Orderable Indicator | The indication that the product can be ordered. |
| Att | 0 | 1 | Product Reorderable Indicator | The indication that the product can be reordered. |
| Assoc | 0 | 1 | Buyer | The buyer. |
| Assoc | 0 | 1 | Seller | The seller. |
| Assoc | | unbounded | Carrier | A carrier. |
| Assoc | 0 | 1 | Delivery Terms | The delivery terms. |
| Assoc | 0 | 1 | Commercial Terms | The commercial terms. |

| Receiving Advice | | | | |
|------------------|---|-----------|---------------------------------|---|
| Assoc | 0 | unbounded | Additional Document | An additional referenced document. |
| Assoc | 0 | 1 | Buyer Order Document | The referenced buyer order. |
| Assoc | 0 | 1 | Seller Order Document | The referenced seller order. |
| Assoc | 0 | 1 | Promotional Deal Document | The referenced promotional deal document. |
| Assoc | 0 | unbounded | Contract Document | A referenced contract. |
| Assoc | 0 | unbounded | Customer Order Document | A referenced customer order document. |
| Assoc | 0 | unbounded | Customer Reference Document | A customer reference document. |
| Assoc | 0 | unbounded | Demand Forecast Document | A referenced demand forecast document. |
| Assoc | 0 | unbounded | Material Returns Document | A referenced material returns document. |
| Assoc | 0 | unbounded | Sales Conditions Document | A referenced sales conditions document. |
| Assoc | 0 | unbounded | Supply Instruction Document | A referenced supply instruction. |
| Assoc | 0 | 1 | Ordering Period | The ordering period. |
| Assoc | 0 | 1 | Shipping Period | The shipping period. |
| Assoc | 0 | unbounded | Applicable Location | A logistics location or place. |
| Assoc | 0 | unbounded | Target Market Country | A target market country. |
| Entity | | | Trade Delivery | Shipping arrangements and movement of goods and or services including despatch and delivery pertaining to a receiving advice. |
| Att | 0 | 1 | Status Code | The status code. |
| Att | 0 | 1 | Final Delivery Indicator | The indication that the delivery is the final delivery. |
| Att | 0 | 1 | Over Delivery Allowed Indicator | The indication that over delivery is allowed. |
| Att | 0 | 1 | Despatched Quantity | The quantity despatched. |
| Att | 0 | 1 | Individual Package Quantity | The quantity within an individual package. |
| Att | 0 | 1 | Per Package Unit Quantity | The number of units per package. |
| Att | 0 | 1 | Package Quantity | The number of packages. |
| Att | 0 | 1 | Product Unit Quantity | The number of product units. |
| Att | 0 | 1 | Requested Quantity | The quantity requested. |
| Att | 0 | 1 | Chargeable Weight | The chargeable weight. |
| Att | 0 | 1 | Theoretical Weight | The theoretical weight. |
| Att | 0 | 1 | Gross Weight | The gross weight (mass). |
| Att | 0 | 1 | Net Weight | The net weight (mass). |
| Att | 0 | 1 | Gross Volume | The gross volume. |
| Att | 0 | 1 | Net Volume | The net volume. |
| Att | 0 | 1 | Pick-Up Availability Date Time | The date when this delivery is available for pick-up. |

| Receiving Advice | | | | |
|------------------|---|-----------|-------------------------------------|--|
| Att | 0 | 1 | Ultimate Ship To Delivery Date Time | The date when the delivery is delivered to the ultimate ship to party. |
| Att | 0 | 1 | Goods Ownership Change. Date Time | The date when the goods of this trade delivery changed from ownership. |
| Assoc | 1 | 1 | Ship From Party | The ship from party. |
| Assoc | 1 | 1 | Ship To Party | The ship to party. |
| Assoc | 0 | 1 | Ultimate Ship To Party | The ultimate ship to party. |
| Assoc | 0 | unbounded | Disposal Party | A disposal party. |
| Assoc | 0 | unbounded | Logistics Service Provider | A logistics service provider party. |
| Assoc | 0 | unbounded | Inventory Manager | An inventory manager party. |
| Assoc | 0 | 1 | Final Destination Country | The country of final destination. |
| Assoc | 0 | unbounded | Additional Document | An additional referenced document. |
| Assoc | 0 | 1 | Delivery Note Document | The referenced delivery note. |
| Assoc | 0 | 1 | Despatch Advice Document | The referenced despatch advice. |
| Assoc | 0 | 1 | Packing List Document | The referenced packing list. |
| Assoc | 0 | unbounded | Receiving Advice Document | A referenced receiving advice. |
| Assoc | 0 | 1 | Shipment Schedule Document | The referenced shipment schedule document. |
| Assoc | 0 | 1 | Order Response Document | The order response document. |
| Assoc | 0 | 1 | Order Change Document | The order change document. |
| Assoc | 0 | unbounded | Delivery Instructions | Delivery instructions. |
| Assoc | 0 | 1 | Actual Despatch Event | The actual despatch event. |
| Assoc | 0 | 1 | Actual Receipt Event | The actual receipt event. |
| Assoc | 0 | 1 | Actual Loading Event | The actual loading event. |
| Assoc | 0 | 1 | Actual Unloading Event | The actual unloading event. |
| Assoc | 0 | 1 | Handling Event | The handling event. |
| Assoc | 0 | 1 | Requested Despatch Event | The requested despatch event. |
| Assoc | 0 | 1 | Requested Delivery Event | The requested delivery event. |
| Assoc | 0 | 1 | Confirmed Release Event | The confirmed release event. |
| Assoc | 0 | 1 | Confirmed Delivery Event | The confirmed delivery event. |
| Assoc | 0 | 1 | Confirmed Despatch Event | The confirmed despatch event. |
| Assoc | 0 | 1 | Confirmed Pick-Up Event | The confirmed pick-up event. |
| Assoc | 0 | 1 | Planned Delivery Event | The planned delivery event. |
| Assoc | 0 | 1 | Planned Despatch Event | The planned despatch event. |
| Assoc | 0 | 1 | Planned Pick-Up Event | The planned pick-up event. |
| Assoc | 0 | unbounded | Consignment | A related consignment. |

| Receiving Advice | | | | |
|-------------------------|---|-----------|---|---|
| Assoc | 0 | unbounded | Included Supply Chain Packaging | Included Supply Chain Packaging |
| Assoc | 0 | unbounded | Note | An included note. |
| Line level | | | | |
| Entity | | | Trade Line Item | Information specific to a trade line item. |
| Att | 0 | 1 | ID | The identifier. |
| Att | 0 | unbounded | Additional ID | An additional identifier. |
| Att | 0 | unbounded | Barcode ID | A barcode identifier. |
| Att | 0 | 1 | Type Code | The type code. |
| Att | 0 | 1 | Type Extension Code | The type extension code. |
| Att | 0 | 1 | Description Code | The code specifying a description of this supply chain trade line item. |
| Assoc | 1 | 1 | Associated Document Line | The associated document line. |
| Assoc | 0 | 1 | Trade Agreement | The specified trade agreement. |
| Assoc | 0 | 1 | Trade Delivery | The specified trade delivery. |
| Assoc | 0 | unbounded | Trade Product | A trade product. |
| Assoc | 0 | unbounded | Referenced Package | A referenced logistics package. |
| Entity | | | Trade Agreement | Contractual terms of a supply chain trade agreement for a receiving advice line. |
| Att | 0 | unbounded | Seller Reference | A seller reference. |
| Att | 0 | unbounded | Buyer Reference | A buyer reference. |
| Att | 0 | unbounded | Reference | A reference. |
| Att | 0 | 1 | Impact Code | The impact code. |
| Att | 0 | 1 | Priority Code | The priority code. |
| Att | 0 | 1 | Product Availability Code | The product availability code. |
| Att | 0 | 1 | Contractual Lead Time Measure | The expected time interval between the receipt of an order and its pick-up fulfilment. |
| Att | 0 | 1 | Delivery Order Fulfilment Lead Time Measure | The expected time interval between the receipt of an order and its delivery fulfilment. |
| Att | 0 | 1 | Pick-Up Order Fulfilment Lead Time Measure | The expected time interval between the receipt of an order and its pick-up fulfilment. |

| Receiving Advice | | | | |
|------------------|---|-----------|--|--|
| Att | 0 | 1 | Seller Proposal Lead Time Measure | The expected time interval between the receipt of an order and its pick-up fulfilment, proposed by the seller. |
| Att | 0 | 1 | Incremental Product Orderable Quantity | The incremental product orderable quantity. |
| Att | 0 | 1 | Information Use Restriction Indicator | The indication that the use of the information provided is restricted. |
| Att | 0 | 1 | Minimum Product Orderable Quantity | The minimum product orderable quantity. |
| Att | 0 | 1 | Maximum Product Orderable Quantity | The maximum product orderable quantity. |
| Att | 0 | 1 | Seller Proposal Minimum Product Orderable Quantity | The minimum product orderable quantity proposed by the seller. |
| Att | 0 | 1 | Order Product Unit Of Measure | The order product unit code, such as kilogram or litre. |
| Att | 0 | 1 | Resale Product Unit Of Measure | The resale product unit code, such as kilogram or litre. |
| Att | 0 | 1 | Product Free of Charge Indicator | The indication that the product is free of charge. |
| Att | 0 | 1 | Product Made To Order Indicator | The indication that the product is manufactured, built or customized only after receipt of order. |
| Att | 0 | 1 | Product Reorderable Indicator | The indication that the product can be reordered. |
| Att | 0 | 1 | Product Orderable Indicator | The indication that the product can be ordered. |
| Assoc | 0 | 1 | Seller | The seller. |
| Assoc | 0 | 1 | Buyer | The buyer. |
| Assoc | 0 | unbounded | Carrier | A carrier. |
| Assoc | 0 | 1 | Product End User | The party acting as the end user for the products. |
| Assoc | 0 | unbounded | Additional Document | An additional referenced document. |
| Assoc | 0 | 1 | Buyer Order Document | The referenced buyer order. |
| Assoc | 0 | 1 | Seller Order Document | The referenced seller order. |
| Assoc | 0 | unbounded | Contract Document | A referenced contract. |
| Assoc | 0 | unbounded | Promotional Deal Document | A referenced promotional deal. |
| Assoc | 0 | unbounded | Customer Order Document | A referenced customer order. |
| Assoc | 0 | unbounded | Customer Reference Document | A customer reference document. |
| Assoc | 0 | unbounded | Demand Forecast Document | A referenced demand forecast document. |
| Assoc | 0 | unbounded | Material Returns Document | A referenced material returns document. |

| Receiving Advice | | | | |
|------------------|---|-----------|------------------------------------|---|
| Assoc | 0 | unbounded | Supply Instruction Document | A referenced supply instruction. |
| Assoc | 0 | 1 | Ordering Period | The ordering period. |
| Assoc | 0 | 1 | Shipping Period | The shipping period. |
| Assoc | 0 | 1 | Product Agreed Price | The agreed price for the product. |
| Assoc | 0 | 1 | Product Actual Price | The actual price for the product. |
| Assoc | 0 | 1 | Product Gross Price | A gross price for the product. |
| Assoc | 0 | 1 | Product Net Price | The net price for the product. |
| Assoc | 0 | 1 | Product Warranty | The applicable warranty for the product. |
| Assoc | 0 | unbounded | Applicable Location | An applicable logistics location or place. |
| Assoc | 0 | unbounded | Target Market Country | A target market country. |
| Assoc | 0 | unbounded | Program Mission Project | A program mission project. |
| Assoc | 0 | 1 | Mission Project | The mission project. |
| Assoc | 0 | unbounded | Business Flag | A business flag. |
| Entity | | | Trade Delivery | Shipping arrangements and movement of goods and or services including despatch and delivery pertaining to a receiving advice. |
| Att | 0 | 1 | Status Code | The status code. |
| Att | 0 | 1 | Final Delivery Indicator | The indication that this delivery is the final delivery. |
| Att | 0 | 1 | Over Delivery Allowed Indicator | The indication that over delivery is allowed. |
| Att | 0 | 1 | Partial Delivery Allowed Indicator | The indication that partial delivery is allowed. |
| Att | 0 | 1 | Fully Delivered Indicator | The indication that this delivery is fully delivered. |
| Att | 0 | 1 | Agreed Quantity | The quantity agreed. |
| Att | 0 | 1 | Billed Quantity | The quantity billed. |
| Att | 0 | 1 | Charge Free Quantity | The charge free quantity. |
| Att | 0 | 1 | Despatched Quantity | The quantity despatched. |
| Att | 0 | 1 | Rejected Quantity | The quantity rejected. |
| Att | 0 | 1 | Order Quantity | The quantity ordered. |
| Att | 0 | 1 | Returned Quantity | The quantity returned. |
| Att | 0 | 1 | Destroyed Quantity | The quantity destroyed. |
| Att | 0 | 1 | Deliverable Quantity | The quantity deliverable. |
| Att | 0 | 1 | Due In Available Quantity | The due in available quantity. |
| Att | 0 | 1 | Due In Forecasted Quantity | The due in forecasted quantity. |
| Att | 0 | 1 | Due In Requested Quantity | The due in requested quantity. |
| Att | 0 | 1 | Due In Returned Quantity | The due in returned quantity. |

| Receiving Advice | | | | |
|------------------|---|-----------|-------------------------------------|--|
| Att | 0 | 1 | Economic Order Quantity | The economic order quantity. |
| Att | 0 | 1 | GFM Transfer Rejected Quantity | The Government Furnished Material (GFM) transfer rejected quantity. |
| Att | 0 | 1 | Individual Package Quantity | The quantity within the individual package. |
| Att | 0 | 1 | Package Quantity | The number of packages. |
| Att | 0 | 1 | Modification Forecasted Quantity | The modification of the forecasted quantity. |
| Att | 0 | 1 | Requested Quantity | The requested quantity. |
| Att | 0 | 1 | Per Package Unit Quantity | The number of units per package. |
| Att | 0 | 1 | Product Unit Quantity | The number of product units. |
| Att | 0 | 1 | Received Quantity | The received quantity. |
| Att | 0 | 1 | Remaining Requested Quantity | The remaining requested quantity. |
| Att | 0 | 1 | Reverse Billed Quantity | The reverse billed quantity. |
| Att | 0 | 1 | Turn In Received Quantity | The turn in quantity received. |
| Att | 0 | 1 | Quantity Variation Reason Code | The code specifying the quantity variation reason. |
| Att | 0 | 1 | Quantity Discrepancy Nature Code | The code specifying the quantity discrepancy nature. |
| Att | 0 | 1 | Chargeable Weight Measure | The chargeable weight. |
| Att | 0 | 1 | Theoretical Weight Measure | The theoretical weight. |
| Att | 0 | 1 | Gross Weight Measure | The gross weight (mass). |
| Att | 0 | 1 | Net Weight Measure | The net weight (mass). |
| Att | 0 | 1 | Gross Volume Measure | The gross volume. |
| Att | 0 | 1 | Net Volume Measure | The net volume. |
| Att | 0 | 1 | Ultimate Ship To Delivery Date Time | The date for this delivery to the ultimate ship to party. |
| Att | 0 | 1 | Pick-Up Availability Date Time | The date for pick-up availability for this delivery. |
| Att | 0 | 1 | Buyer Order Date Time | The date when this delivery was ordered by the buyer. |
| Att | 0 | 1 | Goods Ownership Change. Date Time | The date when the goods of this trade delivery changed from ownership. |
| Assoc | 0 | 1 | Ship From Party | The ship from party. |
| Assoc | 0 | 1 | Ship To Party | The ship to party. |
| Assoc | 0 | 1 | Ultimate Ship To Party | The ultimate ship to party. |
| Assoc | 0 | unbounded | Disposal Party | A disposal party. |

| Receiving Advice | | | | |
|------------------|---|-----------|---------------------------------|---------------------------------------|
| Assoc | 0 | unbounded | Logistics Service Provider | A logistics service provider party. |
| Assoc | 0 | unbounded | Inventory Manager | An inventory manager party. |
| Assoc | 0 | 1 | Final Destination Country | The country of the final destination. |
| Assoc | 0 | unbounded | Additional Document | An additional referenced document. |
| Assoc | 0 | 1 | Delivery Note Document | The referenced delivery note. |
| Assoc | 0 | 1 | Despatch Advice Document | The referenced despatch advice. |
| Assoc | 0 | 1 | Packing List Document | The referenced packing list. |
| Assoc | 0 | unbounded | Receiving Advice Document | A referenced receiving advice. |
| Assoc | 0 | 1 | Order Response Document | The order response document. |
| Assoc | 0 | 1 | Order Change Document | The order change document. |
| Assoc | 0 | 1 | Shipment Schedule | The referenced shipment schedule. |
| Assoc | 0 | unbounded | Consumption Schedule | A consumption schedule. |
| Assoc | 0 | unbounded | Delivery Schedule | A delivery schedule. |
| Assoc | 0 | unbounded | Despatch Schedule | A despatch schedule. |
| Assoc | 0 | unbounded | Logistics Schedule | A logistics schedule. |
| Assoc | 0 | unbounded | Order Schedule | An order schedule. |
| Assoc | 0 | unbounded | Receipt Schedule | A receipt schedule. |
| Assoc | 0 | unbounded | Schedule | A schedule. |
| Assoc | 0 | unbounded | Supply (Replenishment) Schedule | A supply (replenishment) schedule. |
| Assoc | 0 | 1 | Actual Despatch Event | The actual despatch event. |
| Assoc | 0 | 1 | Actual Pickup Event | The actual pickup event. |
| Assoc | 0 | 1 | Actual Receipt Event | The actual receipt event. |
| Assoc | 0 | 1 | Actual Loading Event | The actual loading event. |
| Assoc | 0 | 1 | Actual Unloading Event | The actual unloading event. |
| Assoc | 0 | 1 | Requested Despatch Event | The requested despatch event. |
| Assoc | 0 | 1 | Requested Delivery Event | The requested delivery event. |
| Assoc | 0 | 1 | Confirmed Delivery Event | The confirmed delivery event. |
| Assoc | 0 | 1 | Confirmed Despatch Event | The confirmed despatch event. |
| Assoc | 0 | 1 | Confirmed Pick-Up Event | The confirmed pick-up event. |
| Assoc | 0 | 1 | Planned Delivery Event | The planned delivery event. |
| Assoc | 0 | 1 | Planned Despatch Event | The planned despatch event. |
| Assoc | 0 | 1 | Planned Pick-Up Event | The planned pick-up event. |
| Assoc | 0 | 1 | Handling Event | The handling event. |
| Assoc | 0 | unbounded | Available Inventory | Available Inventory. |
| Assoc | 0 | unbounded | Customer Inventory | Supply chain customer inventory. |

| Receiving Advice | | | | |
|--|---|-----------|---------------------------------|---|
| Assoc | 0 | unbounded | Consignment | A related consignment. |
| Assoc | 0 | unbounded | Included Referenced Package | Included Referenced Package |
| Assoc | 0 | unbounded | Note | A note included. |
| Details of most important associated entities | | | | |
| Entity | | | Academic Qualification | An academic achievement that is officially recognized. |
| Att | 0 | unbounded | Name | A name. |
| Att | 0 | 1 | Abbreviated Name | The abbreviated name. |
| Entity | | | Authoritative Signatory Person | A person who is authorized to sign a document, such as a customs officer or other government official. |
| Att | 0 | 1 | Name | The name. |
| Assoc | 0 | unbounded | Attained Academic Qualification | An attained academic qualification. |
| Entity | | | Binary File | A computer file or program stored in a binary format. |
| Att | 0 | unbounded | ID | An identifier. |
| Att | 0 | 1 | Version ID | The version identifier. |
| Att | 0 | unbounded | Access Text | Access information, such as security and download parameters. |
| Att | 0 | unbounded | Author Name | An author name. |
| Att | 0 | 1 | Character Set Code | The character set code. |
| Att | 0 | unbounded | Description | A description. |
| Att | 0 | 1 | Encoding Code | The encoding code. |
| Att | 0 | 1 | Name | The file name. |
| Att | 0 | unbounded | Included Binary Object | A binary object included in this binary file. |
| Att | 0 | 1 | MIME Code | The Multipurpose Internet Mail Extensions (MIME) type code. |
| Att | 0 | 1 | Size | The size. |
| Att | 0 | unbounded | Title | A title. |
| Att | 0 | 1 | URI | The Uniform Resource Identifier (URI). |
| Entity | | | Business Flag | The place, jurisdiction, state or country as a nominal (in name only) home base for one's operations or charter for this business flag. |
| Att | 0 | unbounded | Description | A description. |
| Att | 0 | unbounded | Name | A name. |
| Att | 0 | unbounded | Amount Quantity | A number of units for the amount. |
| Att | 0 | unbounded | Quantity | A number of units for the quantity. |
| Att | 0 | unbounded | Date Time | A date value. |
| Att | 0 | 1 | Type Code | The type code. |

| Receiving Advice | | | | |
|------------------|---|-----------|-----------------------------------|--|
| Att | 1 | 1 | Value Indicator | The indication that this business flag has a value. |
| Entity | | | Commercial Terms | Conditions agreed upon between the parties with regard to the trade commercial terms of goods and or services. |
| Att | 0 | 1 | ID | The identifier. |
| Att | 0 | 1 | Type Code | The type code, such as an Incoterms code. |
| Att | 0 | 1 | Description | The description. |
| Att | 0 | 1 | Incoterms ID | The Incoterms identifier. |
| Att | 0 | 1 | Incoterms | The description of the incoterms. |
| Entity | | | Consignment | A separately identifiable collection of goods items to be transported or available to be transported from one consignor to one consignee in a Cross Industry (CI) supply chain via one or more modes of transport under a single transport contract. |
| Att | 0 | 1 | Associated Invoice Amount | An associated monetary value of an invoice. |
| Att | 0 | 1 | Declared Value For Customs Amount | The monetary value declared for customs purposes. |
| Att | 0 | 1 | Total Charge Amount | The total monetary value of all freight and other service charges. |
| Att | 0 | 1 | Package. Quantity | The number of packages. |
| Att | 0 | unbounded | Gross Weight | A gross weight (mass) which includes the weight of packaging but which excludes the weight of any transport equipment. |
| Att | 0 | unbounded | Net Weight | A net weight (mass) which excludes the weight of packaging and that of any transport equipment. |
| Att | 0 | unbounded | Gross Volume | A gross volume. |
| Att | 0 | 1 | Net Volume | The net volume which excludes all packaging. |
| Att | 0 | unbounded | Chargeable Weight | A chargeable weight. |
| Assoc | 0 | 1 | Consignor | The consignor party. |
| Assoc | 0 | 1 | Consignee | The consignee party. |
| Assoc | 0 | unbounded | Logistics Transport Movement | A logistics transport movement |
| Assoc | 0 | 1 | Customs Import Agent | The party acting as an agent with respect to the customs |

| Receiving Advice | | | | |
|------------------|---|-----------|--|---|
| | | | | or other regulatory import procedures. |
| Assoc | 0 | 1 | Customs Export Agent | The party acting as an agent with respect to the customs or other regulatory export procedures. |
| Assoc | 0 | 1 | Carrier | The carrier party. |
| Assoc | 0 | 1 | Transport Contract | The referenced transport contract document, such as an air waybill or a sea waybill. |
| Assoc | 0 | unbounded | Utilized Transport Equipment | A piece of utilized transport equipment. |
| Assoc | 0 | 1 | Freight Forwarder | The freight forwarder party. |
| Assoc | 0 | unbounded | Grouping Centre | A grouping centre party. |
| Assoc | 0 | unbounded | Consignment Item | An included consignment item. |
| Assoc | 0 | unbounded | Associated Referenced Document | An associated referenced document, such as the certificate of origin or phyto certificate. |
| Assoc | 0 | 1 | Applicable Transport Cargo Insurance | The applicable transport cargo insurance. |
| Assoc | 0 | 1 | Applicable Cross-Border Customs Valuation | The applicable cross-border customs valuation. |
| Assoc | 0 | unbounded | Applicable Cross-Border Regulatory Procedure | A applicable cross-border regulatory procedure. |
| Assoc | 0 | 1 | Transit Location | The transit location. |
| Assoc | 0 | 1 | Consignee Internal Destination Location | The consignee logistics location from which this supply chain consignment internally is destined. |
| Entity | | | Document Authentication | A proof that a document is genuine. |
| Att | 0 | unbounded | ID | An identifier. |
| Att | 0 | 1 | Type Code | The type of document. |
| Att | 0 | 1 | Actual Date Time | The actual date. |
| Att | 0 | unbounded | Information | Information about this document. |
| Att | 0 | 1 | Representation Type Code | The representation type code, such as direct or indirect. |
| Att | 0 | 1 | Statement | The statement (in text). |
| Att | 0 | 1 | Statement Code | The statement code. |
| Att | 0 | 1 | Transport Means ID | The transport means identifier for this document. |
| Assoc | 0 | 1 | Issue Location | The referenced issue location. |
| Assoc | 0 | 1 | Location Provider | The referenced location provider party. |

| Receiving Advice | | | | |
|------------------|---|-----------|-----------------------------------|--|
| Assoc | 0 | 1 | Provider | The referenced provider party. |
| Entity | | | Document Line | A document line for a receiving advice line. |
| Att | 1 | 1 | ID | The identifier. |
| Att | 0 | 1 | Status Code | The status code. |
| Att | 0 | 1 | Status Reason Code | The line status reason code. |
| Assoc | 0 | unbounded | Note | An included note. |
| Entity | | | Logistics Package | A self-contained wrapping or container within which goods are contained, for this receiving advice line. |
| Att | 0 | 1 | ID | The identifier. |
| Att | 0 | 1 | Global ID | The global identifier. |
| Att | 0 | 1 | Parent ID | The parent identifier.. |
| Att | 0 | 1 | Type Code | The type code |
| Att | 0 | 1 | Type Text | The type (in text). |
| Att | 0 | 1 | Level Code | The package level code. |
| Att | 0 | 1 | Description | The description. |
| Att | 0 | 1 | Gross Volume | The gross volume. |
| Att | 0 | 1 | Gross Weight | The gross weight (mass). |
| Att | 0 | unbounded | Information | Information. |
| Att | 0 | 1 | Item Quantity | The number of logistics package at item level. |
| Att | 0 | 1 | Net Weight | The net weight (mass). |
| Att | 0 | 1 | Nominal Gross Volume | The nominal gross volume. |
| Att | 0 | 1 | Nominal Gross Weight | The nominal gross weight (mass). |
| Att | 0 | 1 | Per Package Unit Quantity | The number of units per package. |
| Att | 0 | 1 | Sequence Number | The sequence number. |
| Att | 0 | 1 | Series End ID | The identifier of the end of a series of packages within this logistics package. |
| Att | 0 | 1 | Series Start ID | The identifier of the start of a series of packages within this logistics package. |
| Assoc | 0 | unbounded | Shipping Marks | Physical shipping marks and barcode information. |
| Assoc | 0 | unbounded | Included Trade Line Item | A supply chain trade line item included in this logistics package. |
| Assoc | 0 | 1 | Linear Spatial Dimension | The linear spatial dimensions. |
| Assoc | 0 | unbounded | Used Supply Chain Packaging | Supply chain packaging used for this logistics package. |
| Assoc | 0 | unbounded | Despatch Note Associated Document | A despatch note associated with this logistics package. |

| Receiving Advice | | | | |
|------------------|---|-----------|-------------------------------|--|
| Assoc | 0 | unbounded | Returnable Asset Instructions | Returnable asset instructions. |
| | | | Logistics Transport Equipment | A piece of equipment used to hold, protect or secure cargo for logistics purposes. |
| Att | 0 | 1 | Size/Type Code | The code specifying the characteristic or characteristics of this piece of transport equipment, such as the ISO 6346 transport equipment size and type code. |
| | | | Logistics Transport Means | A piece of equipment used to hold, protect or secure cargo for logistics purposes. |
| Att | 0 | 1 | Type Code | The code specifying the type of logistics means of transport (Reference UNECE Recommendation 28). |
| Entity | | | Logistics Transport Movement | The conveyance (physical carriage) of goods or other objects used for logistics transport purposes. |
| Att | 0 | 1 | Stage Code | The code specifying the stage of this logistics transport movement. |
| Att | 0 | 1 | Mode Code | The code specifying the mode, such as by air, sea, rail, road or inland waterway, for this logistics transport movement. |
| Att | 0 | 1 | Mode Text | The mode, expressed as text, of this logistics transport movement. |
| Att | 0 | 1 | Transit Direction Code | The code specifying the transit direction of this logistics transport movement. |
| Entity | | | Product | Any tangible output or service produced by human or mechanical effort or by a natural process for Cross Industry (CI) trade purposes. |
| Att | 0 | 1 | ID | The identifier. |
| Att | 0 | 1 | Global ID | The global identifier. |
| Att | 0 | 1 | Seller Assigned ID | The seller assigned identifier. |
| Att | 0 | 1 | Buyer Assigned ID | The buyer assigned identifier. |
| Att | 0 | 1 | Manufacturer Assigned ID | The manufacturer assigned identifier. |

| Receiving Advice | | | | |
|------------------|---|-----------|--------------------------------------|---|
| Att | 0 | 1 | Ultimate Customer Assigned ID | The ultimate customer assigned identifier. |
| Att | 0 | unbounded | Additional ID | An additional identifier. |
| Att | 0 | unbounded | Name | A name. |
| Att | 0 | 1 | Trade Name | The trade name. |
| Att | 0 | unbounded | Description | A description. |
| Att | 0 | 1 | Degree Of Product Change | The degree of product change, such as technical change. |
| Att | 0 | 1 | Type Code | The type code. |
| Att | 0 | 1 | Net Weight | The net weight (mass). |
| Att | 0 | 1 | Gross Weight | The gross weight (mass). |
| Att | 0 | 1 | Drained Net Weight | The drained net weight (mass). |
| Att | 0 | 1 | Brand Name | The brand name. |
| Att | 0 | 1 | Sub-Brand Name | The sub-brand name. |
| Att | 0 | unbounded | Product GroupID | An product group identifier. |
| Att | 0 | 1 | Area Density | The area density, such as paper density in grams per square metre (gsm). |
| Att | 0 | 1 | Colour Code | The colour code. |
| Att | 0 | unbounded | Colour Description | A description of the colour. |
| Att | 0 | unbounded | Use Description | A description of a use. |
| Att | 0 | unbounded | Designation | A designation. |
| Att | 0 | unbounded | End Item Name | An end item name. |
| Att | 0 | 1 | Latest Product Data Change Date Time | The date of the latest change in the product data. |
| Att | 0 | unbounded | End Item Type Code | A code specifying a type of end item. |
| Att | 0 | 1 | Variable Measure Indicator | The indication that instances of the product have a variable measure, such as weight, length or volume. |
| Att | 0 | unbounded | Additional Description | An additional description. |
| Att | 0 | unbounded | Batch ID | A batch identifier. |
| Att | 0 | unbounded | Common Name | A common name. |
| Att | 0 | unbounded | Concise Description | A concise description. |
| Att | 0 | 1 | Configurable Indicator | The indication that the product is configurable. |
| Att | 0 | 1 | Content Unit Quantity | The number of content units. |
| Att | 0 | unbounded | Customer Assigned ID | A customer assigned identifier. |
| Att | 0 | unbounded | Gross Volume | A gross volume. |
| Att | 0 | unbounded | Industry Assigned ID | An industry assigned identifier. |
| Att | 0 | unbounded | Model ID | A model identifier. |
| Att | 0 | unbounded | Net Volume | A net volume. |
| Att | 0 | 1 | Recycling Type Code | The recycling code. |
| Att | 0 | unbounded | Status Code | A status code. |

| Receiving Advice | | | | |
|------------------|---|-----------|--|---|
| Att | 0 | unbounded | Unit Type Code | A unit type code. |
| Assoc | 0 | unbounded | Applicable Product Characteristic | A product characteristic. |
| Assoc | 0 | unbounded | Applicable Material Goods Characteristic | A material goods characteristic. |
| Assoc | 0 | unbounded | Designated Product Classification | A designated product classification. |
| Assoc | 0 | unbounded | Individual Trade Product Instance | An individual instance. |
| Assoc | 0 | unbounded | Certification Evidence Reference | A referenced certification evidence document. |
| Assoc | 0 | unbounded | Inspection Reference | A referenced inspection document. |
| Assoc | 0 | 1 | Origin Trade Country | The country of origin. |
| Assoc | 0 | 1 | Linear Spatial Dimension | Linear spatial dimensions. |
| Assoc | 0 | 1 | Minimum Linear Spatial Dimension | Minimum linear spatial dimensions. |
| Assoc | 0 | 1 | Maximum Linear Spatial Dimension | Maximum linear spatial dimensions. |
| Assoc | 0 | 1 | Manufacturer Party | The party who is the manufacturer. |
| Assoc | 0 | 1 | MSDS Reference | The referenced Material Safety Data Sheet (MSDS) document. |
| Assoc | 0 | unbounded | Additional Reference | An additional referenced document. |
| Assoc | 0 | unbounded | Information | An information note. |
| Assoc | 0 | 1 | Brand Owner Party | The party that owns the brand. |
| Assoc | 0 | 1 | Legal Rights Owner Party | The party that owns the legal rights. |
| Assoc | 0 | unbounded | Presentation Specified Binary File | A binary presentation file. |
| Assoc | 0 | unbounded | Buyer Supplied Parts Reference Document | A buyer referenced supplied parts document. |
| Entity | | | Product Warranty | An undertaking as to the quality of a product including responsibility for replacement or repair over a specified period. |
| Att | 0 | unbounded | Description | A description. |
| Assoc | 0 | 1 | Validity Period | The period within which this product warranty is valid. |
| Entity | | | Referenced Location | A reference to a physical location or place. |
| Att | 0 | 1 | ID | The identifier, such as a United Nations Blue Number (UNBN) or GS1 Global Location Number (GLN). |
| Att | 0 | unbounded | Name | A name. |

| Receiving Advice | | | | |
|------------------|---|-----------|--------------------------------|--|
| Entity | | | Referenced Package | A self-contained wrapping or container within which goods are contained, for this receiving advice line. |
| Att | 0 | 1 | ID | The identifier. |
| Att | 0 | 1 | Global ID | The global identifier. |
| Att | 0 | 1 | Parent ID | The parent identifier.. |
| Att | 0 | 1 | Type Code | The type code |
| Att | 0 | 1 | Type Text | The type (in text). |
| Att | 0 | 1 | Level Code | The package level code. |
| Att | 0 | 1 | Description | The description. |
| Att | 0 | 1 | Gross Volume | The gross volume. |
| Att | 0 | 1 | Gross Weight | The gross weight (mass). |
| Att | 0 | unbounded | Information | Information. |
| Att | 0 | 1 | Item Quantity | The number of logistics package at item level. |
| Att | 0 | 1 | Net Weight | The net weight (mass). |
| Att | 0 | 1 | Nominal Gross Volume | The nominal gross volume. |
| Att | 0 | 1 | Nominal Gross Weight | The nominal gross weight (mass). |
| Att | 0 | 1 | Per Package Unit Quantity | The number of units per package. |
| Att | 0 | 1 | Sequence Number | The sequence number. |
| Att | 0 | 1 | Series End ID | The identifier of the end of a series of packages within this logistics package. |
| Att | 0 | 1 | Series Start ID | The identifier of the start of a series of packages within this logistics package. |
| Entity | | | Referenced Party | A reference to an individual, a group, or a body having a role in a business function. |
| Att | 0 | 1 | ID | The identifier. |
| Att | 0 | 1 | Name | The name. |
| Att | 0 | unbounded | Type Code | A type of party that is independent of its role. |
| Att | 0 | 1 | Role Code | The role code. |
| Assoc | 0 | unbounded | Defined Contact | A referenced defined contact. |
| Assoc | 0 | 1 | Authoritative Signatory Person | The authoritative signatory person. |
| Assoc | 0 | 1 | Unstructured Address | The unstructured address for this referenced party. |
| Entity | | | Supply Chain Packaging | Any material with which supply chain goods are packaged, such as a box or bubble wrap. |
| Att | 0 | 1 | Type Code | The code specifying the type of packaging. |
| Att | 0 | 1 | Type Text | The type of packaging. |

| Receiving Advice | | | | |
|------------------|---|-----------|-------------------------------------|--|
| Att | 0 | unbounded | Description | A description. |
| Att | 0 | unbounded | Condition Code | A code specifying the condition . |
| Att | 0 | unbounded | Disposal Method Code | A code specifying the disposal method . |
| Att | 0 | 1 | Capacity Measure | The measure of the capacity . |
| Att | 0 | unbounded | Weight | A measure of the weight . |
| Att | 0 | unbounded | Instruction Code | A code specifying an instruction. |
| Att | 0 | 1 | Level Code | The code specifying a level of packaging. |
| Att | 0 | 1 | Sequence Number | The number of a sequence of the packaging. |
| Att | 0 | 1 | Maximum Stackability Quantity | The number of packaging units which can be stacked on top of each other. |
| Att | 0 | 1 | Maximum Stackability Weight | The measure of the maximum stackability weight. |
| Att | 0 | 1 | Returnable Indicator | The indication that the packaging is returnable. |
| Att | 0 | 1 | Customer Facing Total Unit Quantity | The number of units facing the customer, such as placed on a retail shelf. |
| Att | 0 | unbounded | Total Unit Quantity | A number of units contained in this packaging. |
| Att | 0 | 1 | Layer Total Unit Quantity | The number of units in a layer. |
| Att | 0 | 1 | Content Layer Quantity | The number of content layers that are or may be packaged with this packaging, such as the number of layers of product on a pallet. |
| Att | 0 | unbounded | Additional Instruction Code | A code specifying an additional instruction. |
| Att | 0 | 1 | Additional Instruction Indicator | The indication that there is an additional instruction. |
| Assoc | 0 | 1 | Dimensions | The linear spatial dimensions . |
| Assoc | 0 | 1 | Minimum Dimensions | The minimum linear spatial dimensions. |
| Assoc | 0 | 1 | Maximum Dimensions | The maximum linear spatial dimensions. |
| Assoc | 0 | unbounded | Marking | A marking specified for this packaging, such as an inscription, stamp or label to indicate date etc. |
| Assoc | 0 | unbounded | Goods Characteristic | Material goods characteristic applicable to this packaging. |
| Assoc | 0 | unbounded | Disposal Instructions | Disposal instructions. |

| Receiving Advice | | | | |
|------------------|---|-----------|-------------------------------|---|
| Assoc | 0 | unbounded | Returnable Asset Instructions | Returnable asset instructions. |
| Entity | | | Unstructured Address | The location, using an unstructured address format, at which a particular organization or person may be found or reached. |
| Att | 0 | 1 | ID | The identifier. |
| Att | 0 | 1 | Postcode | The postcode. |
| Att | 0 | 1 | Line One | The first free form line. |
| Att | 0 | 1 | Line Two | The second free form line. |
| Att | 0 | 1 | Line Three | The third free form line. |
| Att | 0 | 1 | Line Four | The fourth free form line. |
| Att | 0 | 1 | Line Five | The fifth free form line. |
| Att | 0 | 1 | City Name | The name of the city, town or village. |
| Att | 0 | 1 | Country Code | The country identifier (Reference ISO 3166 and UN/ECE Rec 3). |
| Att | 0 | 1 | City Sub-Division Text | The city sub-division name. |
| Att | 0 | 1 | Country Name | The country name. |
| Att | 0 | unbounded | Country Sub-Division Name | A country sub-division name. |
| Att | 0 | 1 | Type Code | The type of unstructured address. |
| Att | 0 | 1 | Country Sub-Division Code | The country sub-division identifier. |
| Att | 0 | 1 | City ID | The city identifier, such as a United Nations Location Code (UNLOCODE) or GS1 Global Location Number (GLN). |

8.3.3 Business Rules

Not applicable

8.3.4 Definition of Terms

Regarding the Definition of Terms refer to TBG1 Common Supply Chain BRS and published CCL.