

1
2
3
4
5
6
7
8
9
10
11
12
13
14
15
16
17
18
19
20
21
22
23
24
25
26
27
28
29
30

Draft
January 2019
CEFACT/___/___



UNITED NATIONS ECONOMIC COMMISSION FOR EUROPE
UNITED NATIONS CENTRE FOR TRADE FACILITATION
AND ELECTRONIC BUSINESS (UN/CEFACT)

**BUSINESS REQUIREMENTS SPECIFICATION
(BRS)**

Cross Industry Despatch and Receive Process

Approved: UN/CEFACT Bureau _____

Version: 3.0
Release: 1.0

31
32
33
34
35
36
37
38
39
40
41
42
43
44
45
46
47
48
49

TABLE OF CONTENTS

2 INTRODUCTION 4

3 OBJECTIVE 4

4 AUDIENCE..... 4

5 REFERENCE DOCUMENTS..... 4

6 CHANGE LOG..... 4

7 SCOPE..... 5

7.1 BUSINESS PROCESS ELABORATION 5

7.1.1 Business Process Flow 7

7.1.2 Business Collaboration..... 9

8 BUSINESS REQUIREMENTS..... 11

8.1 BUSINESS INFORMATION VIEW 11

8.2 INFORMATION FLOW DEFINITION..... 11

8.2.1 Advise Despatch (Business Transaction) 11

8.2.2 Correct Despatch Advice (Business Transaction)..... 13

8.2.3 Advise Receipt (Business Transaction)..... 14

8.3 BUSINESS DOCUMENTS..... 18

8.3.1 Despatch Advice 18

8.3.2 Receiving Advice..... 29

8.3.3 Business Rules 49

8.3.4 Definition of Terms..... 49

TABLE OF FIGURES and TABLES

Figure 7-1 Positioning Cross Industry Despatch & Receive within BUY-SHIP-PAY Process Model.....5

Figure 7-2 Scope of the despatch and receive process.....6

Figure 7-3 Business Process Activity Diagram8

Figure 7-4 Entity Life Cycle diagram.....8

Figure 7-5 The Business Collaboration diagram.....9

Figure 7-6 Business Collaboration Protocol - Activity Diagram.....10

Figure 8-1 Business Information View Despatch And Receive Of Goods11

Figure 8-2 Business Transaction Use Case Diagram Advise Despatch.....11

Figure 8-3 Activity Diagram Advise Despatch12

Figure 8-4 Business Transaction Use Case Diagram Correct Despatch Advise13

Figure 8-5 Activity Diagram Correct Despatch Advice14

Figure 8-6 Business Transaction Use Case Diagram Advise Receipt14

Figure 8-7 Activity Diagram Advise of Receipt of Goods.....15

Figure 8-8 Business Entity Class Diagram – Despatch Advice.....16

Figure 8-9 Business Entity Class Diagram – Receiving Advice.....17

Figure 8-10 Business Entity Class Diagram – Trade Product.....17

Figure 8-11 Business Entity Class Diagram – Trade Delivery18

68

69	Table 7-1 BUY-SHIP-PAY context categories	5
70	Table 8-1 Business Transaction Use Case Description Advise Despatch	12
71	Table 8-2 Business Transaction Use Case Description Correct Despatch Advise	13
72	Table 8-3 Business Transaction Use Case Description Advise Receipt	15
73		
74		

Initial update

75 2 Introduction

76 The current practice of the exchange of business documents by means of telecommunications – usually
77 defined as e-Business presents a major opportunity to improve the competitiveness of companies,
78 especially for Small and Medium Enterprises (SME). Started as an initiative by CEN/ISSS Work shop
79 eBES, the European Expert Group 1 (EEG1) – Supply Chain & e-Procurement developed the Cross
80 Industry Despatch and Receive process in 2006. The Cross Industry Despatch and Receive process has
81 been compiled using the EUROFER ESIDEL version 1.0 and the Boost Aero version 1.0 as a base, with
82 contributions and submissions from: EUROFER, ODETTE, GS1, EDIFrance, EDIBUILD and Boost
83 Aero.

84 After the UN/CEFACT Forum meeting in Dublin in March 2007, the BRS was further developed with
85 requirements contributed from TBG1 members such as GS1, UBL, EDIFrance, US Department of
86 Defense, JAIF and others. Also requirements were implemented from Construction (TBG 6). The
87 structure was reworked according to the Buy-Ship-Pay process model developed by TBG 14. The high
88 level entity model was based on the Buy-Ship-Pay information model jointly developed by TBG1,
89 TBG2, TBG3, TBG5 and TBG18.

90 3 Objective

91 The objective of this document is to standardize the Business processes, the Business transactions and
92 the Information entities of the despatch and receive process used by the industries in the supply chain.
93 The business process is the detailed description of the way trading partners intend to play their
94 respective roles, establish business relations and share responsibilities to interact efficiently with the
95 support of their respective information systems. Each Business transaction is realized by an exchange
96 of Business documents (also called messages). The sequences in which these documents are used,
97 composes a particular instance of a scenario and are presented as activity diagrams in the document.

98 4 Audience

99 The audience of this document is all users who are interested in the delivery process and information
100 data.

101 5 Reference Documents

102 Knowledge and application of the following standards is crucial to the development of quality
103 business requirements specifications. Other key references are shown in the appropriate part of the
104 document.

- 105 • UN/CEFACT TBG1 Common Supply Chain BRS, Release 1
- 106 • UN/CEFACT TBG2 Buy-Ship-Pay (Including UNeDocs) BRS, version 1.0
- 107 • UN/CEFACT Modeling Methodology (CEFACT/TMG/N090R10, November 2001)
- 108 • UN/EDIFACT – Despatch advice message, Receiving advice message
- 109 • UN/CEFACT Modeling Methodology (CEFACT/TMG/N090R10, November 2001).
- 110 • UN/CEFACT Business Requirement Specification – Template v2.0.1 (May 2012)
- 111 • UN/CEFACT BRS_CrossIndustryDeliveryProcess_v1.013.1 (Sep 2008).

112 6 Change log

Date of Change	Version	Changed	Summary of Changes
20-feb-2009	1.00.13	-	Version sent for approval to TBG Steering
17-jan-2019	3.0	Added: fig. 8.1, §8.3.2 Changed: fig 8.8 till 8.11, §8.3.1	Initial update

7 Scope

This section describes the extent and limits of the business process within the supply chain being described in this document.

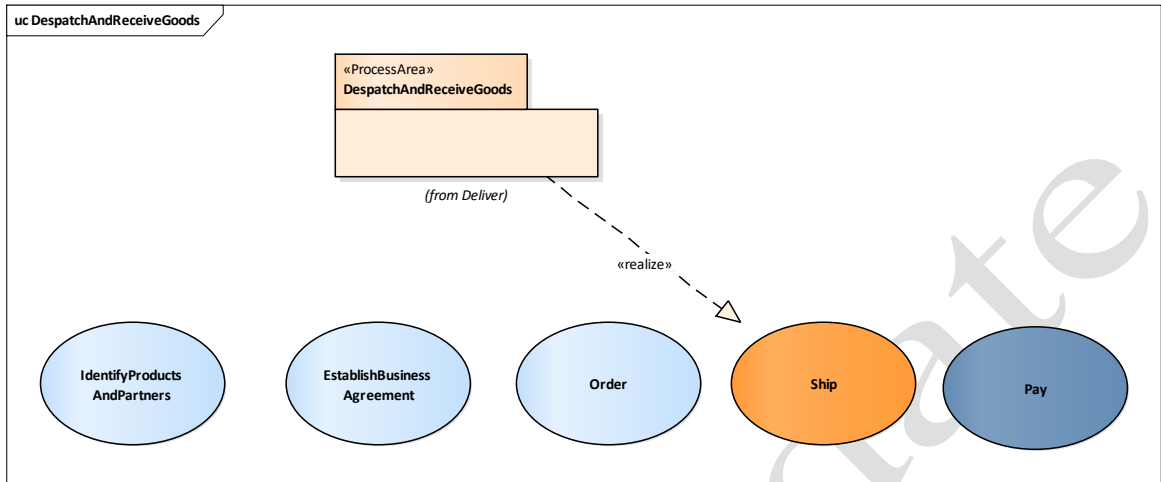


Figure 7-1 Positioning Cross Industry Despatch & Receive within BUY-SHIP-PAY Process Model

Table 7-1 BUY-SHIP-PAY context categories

Categories	Description and Values
Business Process	Despatch and Receive process in the supply chain BUY-SHIP-PAY/Procurement&Sales/Delivery
Product Classification	All
Industry Classification	All
Geopolitical	Global
Official Constraint	None
Business Process Role	ShipFrom, ShipTo
Supporting Role	Carrier
System Capabilities	No limitations

Note:

The processes defined apply only to the collaboration between Ship From (sender of goods) and Ship To (receiver of goods). Internal processes and communication with third parties (such as Transporters, Warehouses, etc.) are outside the scope of this BRS. However the Carrier (Transporter) is in a supporting role in the process as some of the generated documents/data will be carried by them for Proof-of-Delivery Process (POD) and also may re-use information such as locations, weight and Transport packaging

7.1 Business Process Elaboration

The processes contained in the Despatch and Receive process are shown in the following Use Case Diagram.

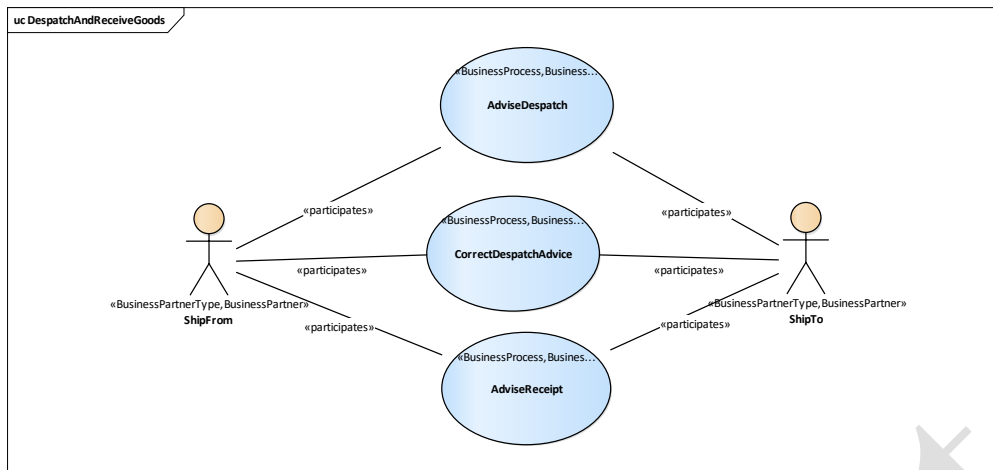


Figure 7-2 Scope of the despatch and receive process

The despatch and receive process covers the physical delivery of goods from one physical site to another according to agreements between the supplier and customer in order to fulfill a delivery contract.

The process requires an existing commercial contract between a customer buyer and a supplier seller. This contract can be established in several ways, as spot order, call off order, if necessary, further detailed in a delivery instruction etc. Prior to the delivery, the customer and the supplier must also agree upon the delivery conditions and the way the transportation of goods is to be organized.

Note:

Ship From may be the supplier (or one of supplier's subsidiaries) but not necessarily. Neither has the Ship To to be the Customer of the Goods. Therefore, neither the term Supplier nor Customer is applicable to describe this partner. An analogous situation applies to Ship To. For instance, as part of a shipping process, the Goods may be sent to a Logistics Service Provider (LSP) e.g. Packing or Consolidation company. In this case the Ship To Party is the LSP. When the Goods have been Re-packed then the Ship From Party will be the LSP.

In the Despatch and Receive process it is foreseen to transmit information between the Ship From and the Ship To concerning:

- The shipment and the consigned goods despatched by the Ship From.
- If necessary, corrected details of a shipment and/or the consigned goods despatched by the Ship From.
- The receipt of the shipment and the consigned goods by the Ship To.

The Despatch and Receive process covers the way in which information is provided on the despatch of goods and on the receipt of goods.

Providing information to the Ship To of the despatch of goods at (or near to) the moment of departure, allows the Ship To to prepare for the reception of the goods. Providing information about the reception of the goods allows the Ship From to check the correct arrival of the despatched goods and the information can be used as a trigger to send an invoice to the customer.

Note:

The structure of the Despatch Advice should be very similar to the Invoice because in integrated systems the workflow will create an Invoice from this data or both documents will be derived from the same source. The focus of this document is on logistics data and so will provide information for packaging and stock control. Of course an Invoice may also be sufficient, as in the case of Point-Of-Sale systems, however a Despatch Advice is more explicit and indicates the actual movement and may also be required where the pricing information is either not available or is sensitive.

Information exchanged to inform the Ship To about the goods despatched may be structured as described below:

- Item based, giving the details of a consignment from the point of view of the goods despatched
- Package based, giving the details of a consignment from the point of view of the package used for the transportation, i.e. the handling units and the package units within which the goods are despatched.
- A combination of both approaches is possible.

In certain circumstances, e.g. because of transportation incidents, the Ship From may need to correct or cancel the despatch and inform the Ship To accordingly.

Once the Ship To has received the goods (or units), he will check them against the goods (or units) advised in the despatch information. The Ship To may then send to the Ship From, a confirmation of the reception of the goods (or units) and, if applicable, a notification of any discrepancies.

7.1.1 Business Process Flow

Ship From prepares shipment according to previously received instructions or in agreement with terms of delivery as specified in an order. Parallel to the preparation of the physical shipment all necessary data for an electronic Despatch Advice message is collected and compiled. The message is being sent from Ship From to Ship To.

In the event of changes in the shipment after the transmission of the despatch advice the Ship From compiles a Despatch Advice correction message and sends it to Ship To.

After receiving and – if necessary – inspection of the goods the Ship To creates an electronic Receiving Advice message. This message confirms the received goods and their quantity. It may contain statements concerning the conditions of received goods and their compliance with the order or otherwise agreed quality standards.

The Activities involved in the Despatch and Advice processes are shown in figure 4-3 together with the states of the “Delivery” Business Entity that are changed by the processes.

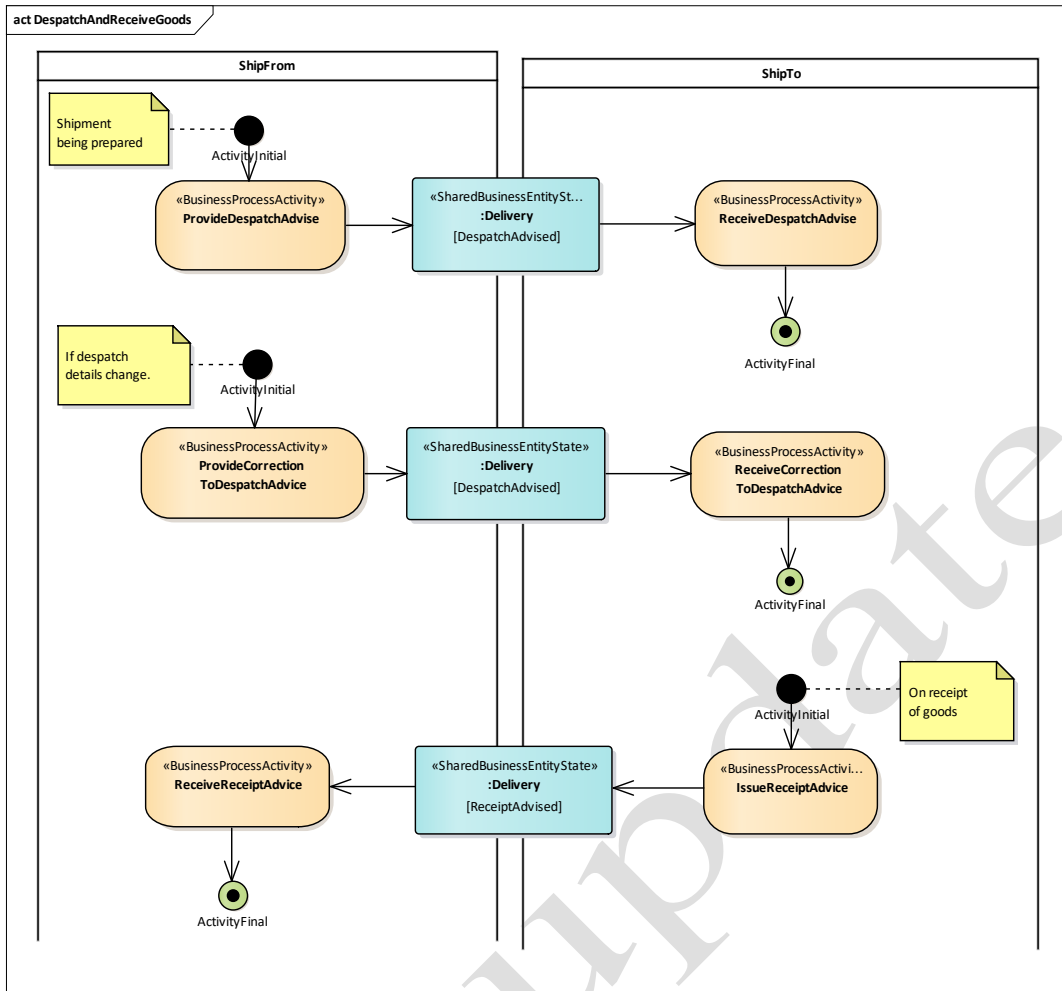


Figure 7-3 Business Process Activity Diagram

The states that the Delivery Business Entity may assume as a result of the Despatch and Receive business process are shown in the Entity Life Cycle diagram figure 4-4.

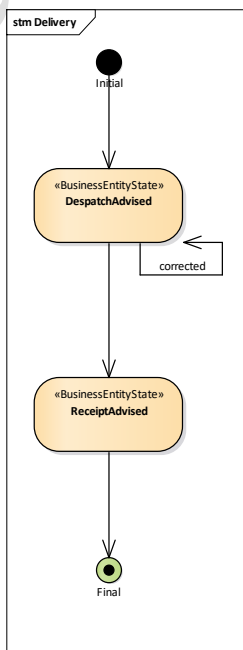


Figure 7-4 Entity Life Cycle diagram

7.1.2 Business Collaboration

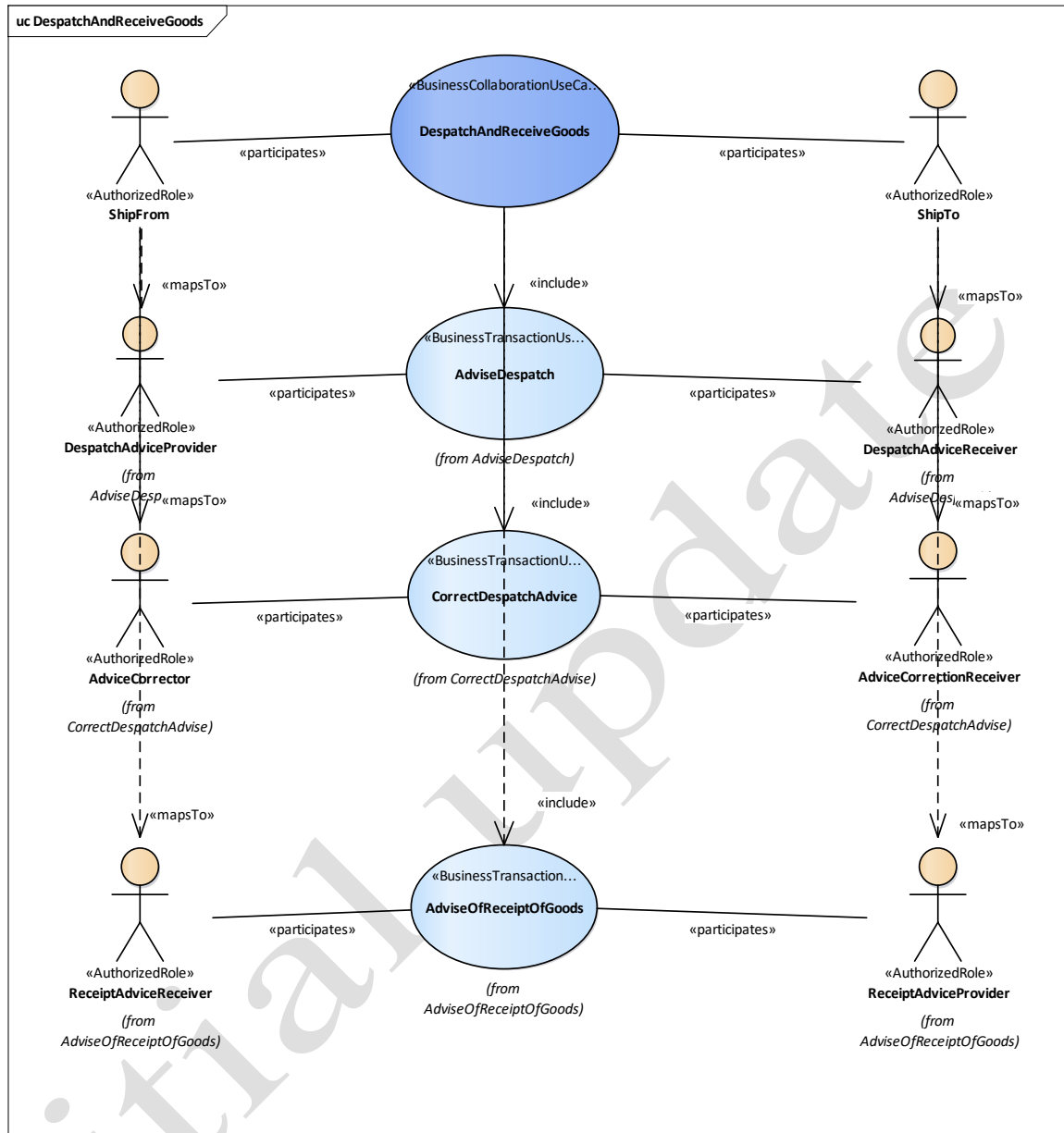


Figure 7-5 The Business Collaboration diagram

The Business Collaboration diagram figure 4-5 (above) shows the three transactions that make up the Despatch and Receive process. It also links the authorised roles from each transaction to the Business Partner Types (Ship From and Ship To). The logical order in which these transactions may occur is shown in the Business Collaboration Protocol diagram figure 4-6 (below). The Use Case Diagrams and description of the three business transactions are shown in Section 4-3

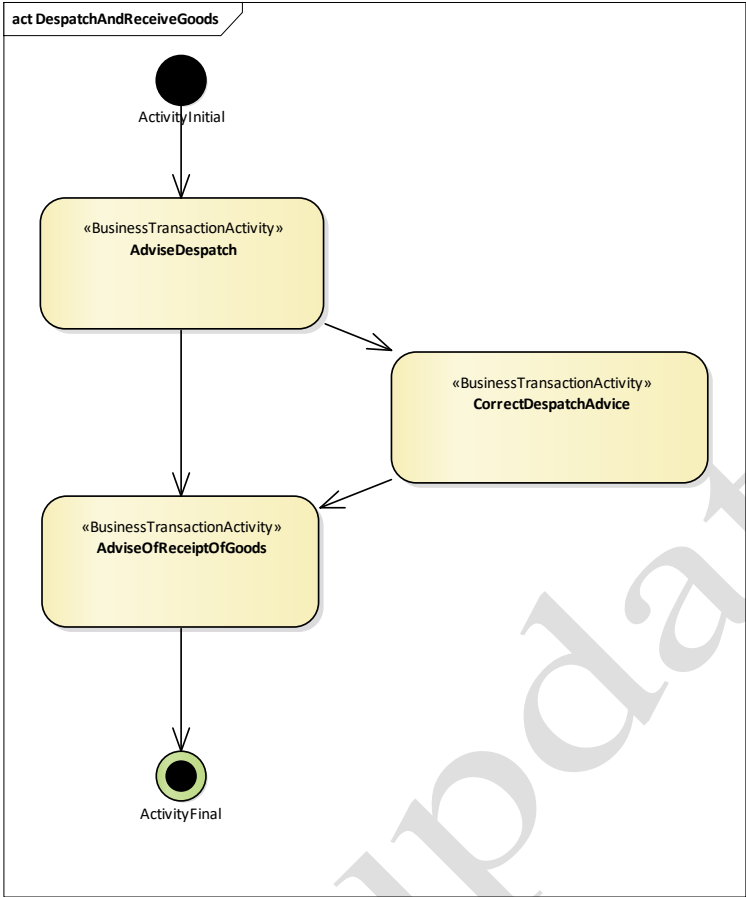


Figure 7-6 Business Collaboration Protocol - Activity Diagram

8 Business Requirements

8.1 Business Information View

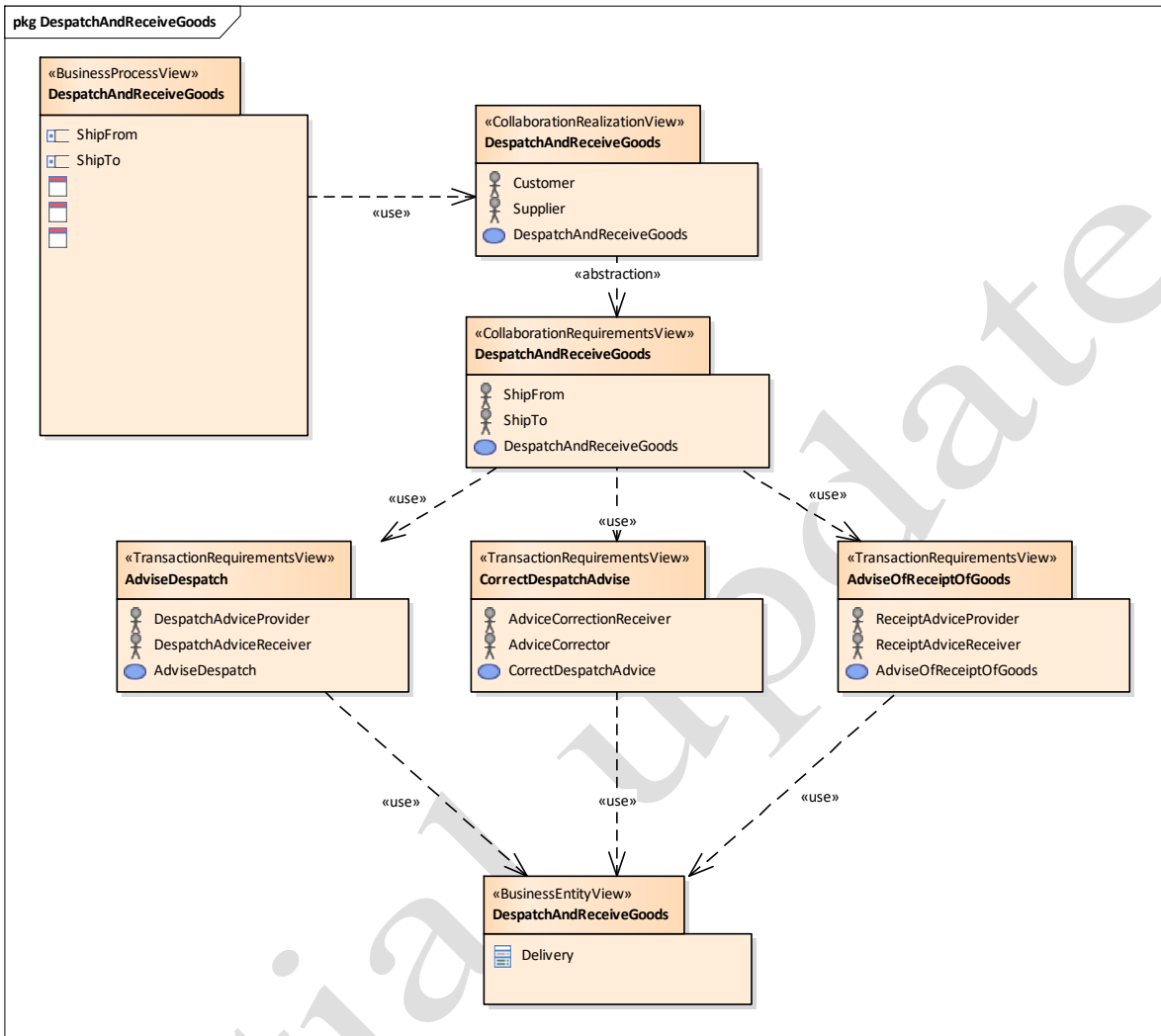


Figure 8-1 Business Information View Despatch And Receive Of Goods

8.2 Information flow definition

8.2.1 Advise Despatch (Business Transaction)

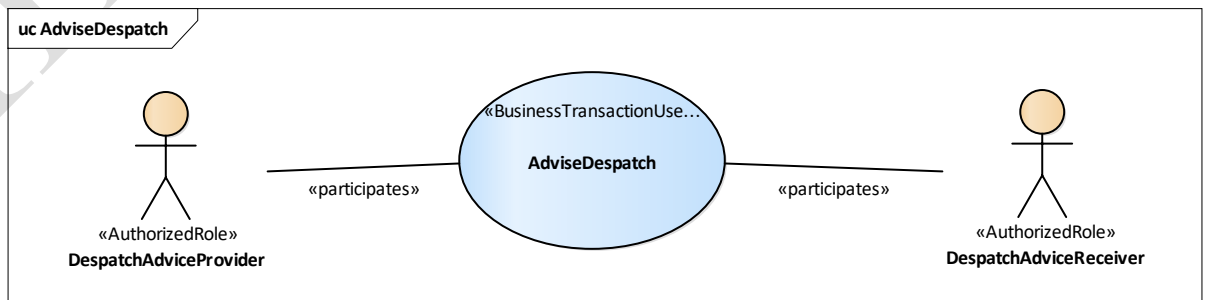


Figure 8-2 Business Transaction Use Case Diagram Advise Despatch

Table 8-1 Business Transaction Use Case Description Advise Despatch

Identifier	Advise Despatch
Business Message Type	Despatch Advice
Description	Once the goods are ready to leave (or have just left) the ship from location the Ship From sends a despatch advice to the Ship To to inform him about the despatch. Once the Ship To has received the despatch advice, the process ends.
Partner Types	Ship From, Ship To
Authorized Roles	Despatch Advice Provider, Despatch Advice Receiver.
Legal Implications	In certain cases (such as Ex-works terms) the customer may have taken responsibility for the custody of the goods when the Despatch Advice has been sent. This may also effect ownership.
Initial/Terminal Events	<ul style="list-style-type: none"> • Initial: the goods are ready to leave (or have just left) the ship from location. • Terminal: the Ship To has received the despatch advice (and can prepare for reception of the goods)
Scope	Information exchange between Ship From and Ship To concerning the despatch of goods.
Boundary	
Constraints	

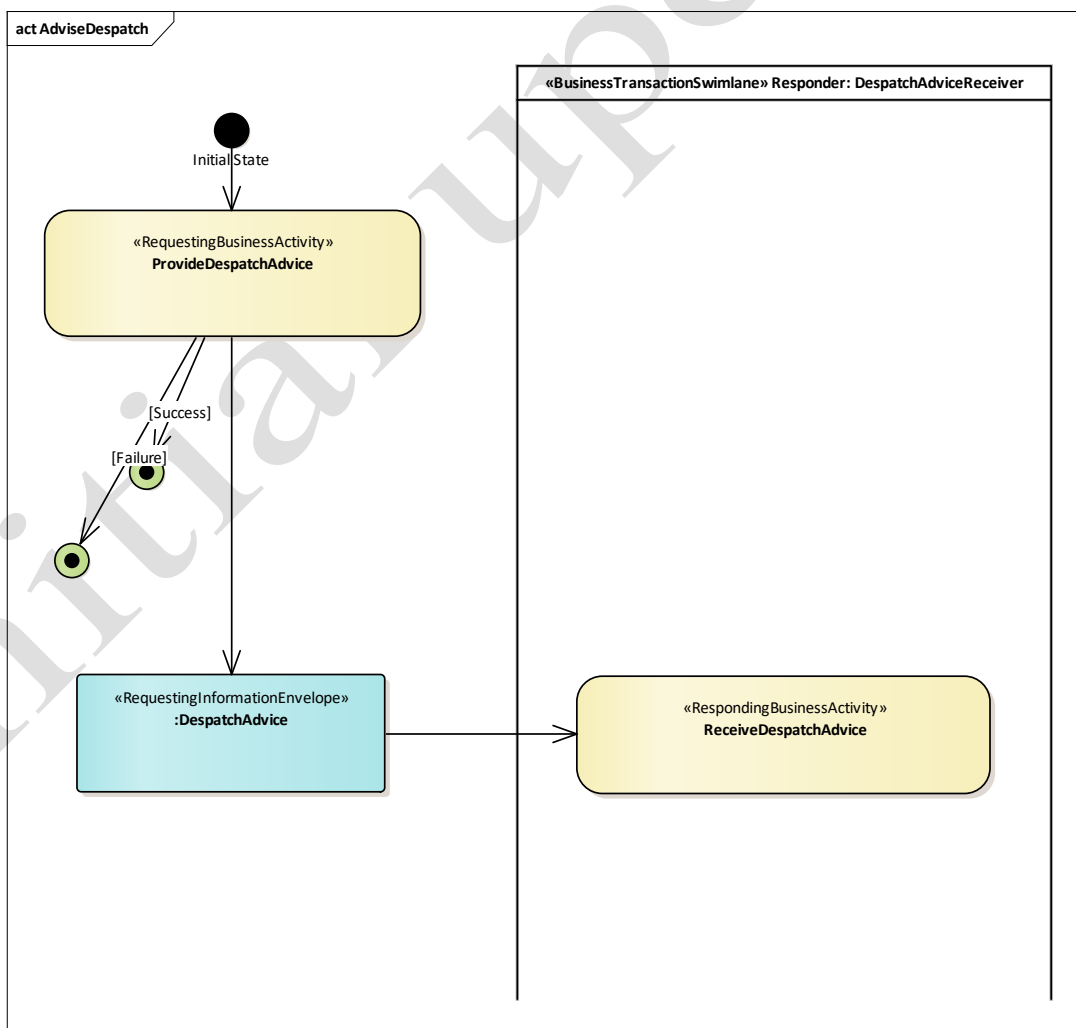


Figure 8-3 Activity Diagram Advise Despatch

8.2.2 Correct Despatch Advice (Business Transaction)

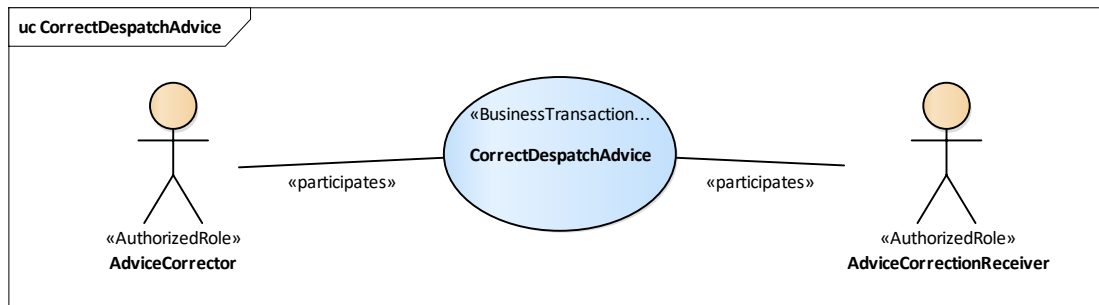


Figure 8-4 Business Transaction Use Case Diagram Correct Despatch Advice

Table 8-2 Business Transaction Use Case Description Correct Despatch Advice

Identifier	Correct Despatch Advice
Business Message Type	Despatch Advice
Description	Once the goods have left the ship from location and a change occurs in the delivery or the delivery is cancelled, the Ship To is informed.
Partner Types	Ship From, Ship To
Authorized Roles	Advice Corrector, Advice Correction Receiver
Legal Implications	In certain cases (such as Ex-works terms) the Ship To may have taken responsibility for the custody of the goods when the Despatch Advice was sent.
Initial/Terminal Events	<ul style="list-style-type: none"> Initial: the shipment details are changed or the shipment is cancelled. Terminal: the ShipTo has received the corrected despatch advice.
Scope	Information exchange between Ship From and Ship To concerning the despatch of goods.
Boundary	
Constraints	

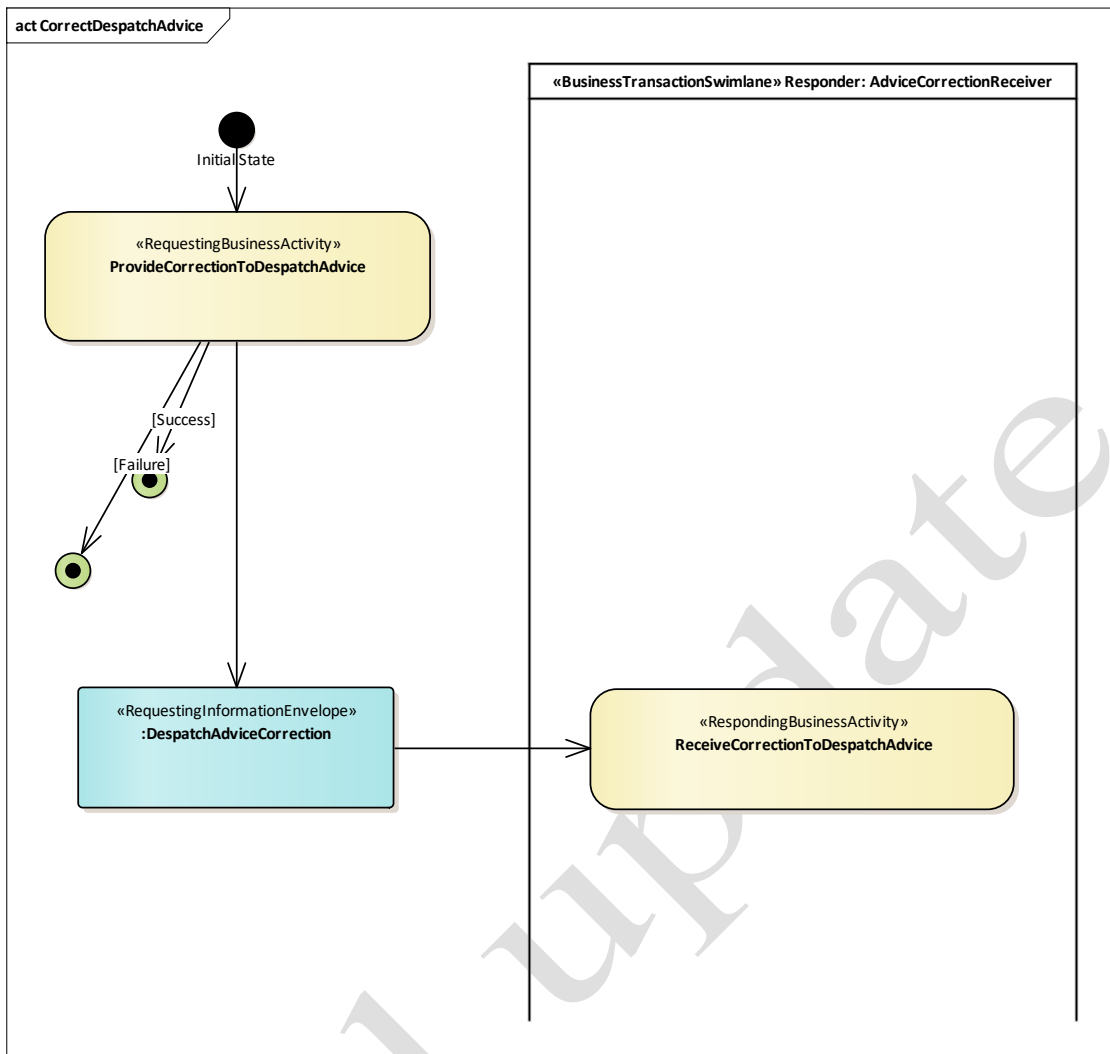


Figure 8-5 Activity Diagram Correct Despatch Advice

8.2.3 Advise Receipt (Business Transaction)

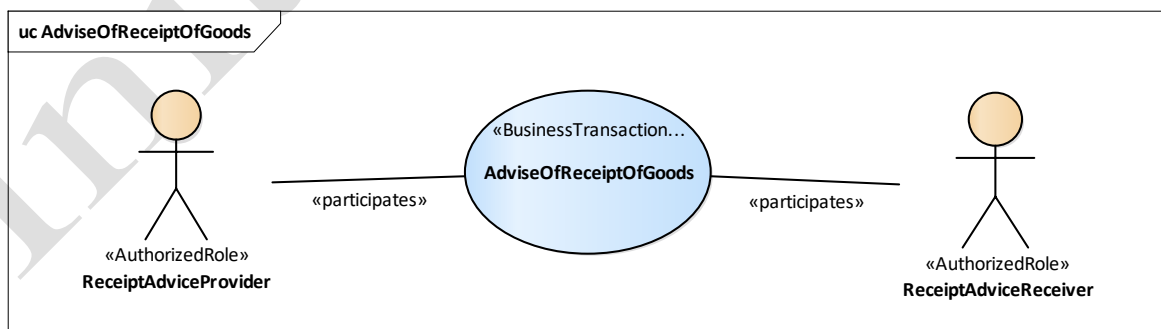


Figure 8-6 Business Transaction Use Case Diagram Advise Receipt

Table 8-3 Business Transaction Use Case Description Advise Receipt

Identifier	Advise Receipt
Business Message Type	Receiving Advice
Description	The Ship To prepares and sends a receiving advice to the Ship From to confirm reception of the goods and, if applicable, notify any discrepancies between the goods received and those announced in the despatch advice. Once the Ship From has received the receiving advice, the process ends.
Partner Types	Ship From, Ship To
Authorized Roles	Receipt Adviser, Receipt Receiver
Legal Implications	Ship To has taken responsibility for the custody of the goods. This may have effects on ownership or payment. The receiving advice document has an important legal value in the commercial process.
Initial/Terminal Events	<ul style="list-style-type: none"> • Initial: the shipment details are changed or the shipment is cancelled. • Terminal: the ShipTo has received the corrected despatch advice.
Scope	To report on the goods received by the Ship To.
Boundary	
Constraints	

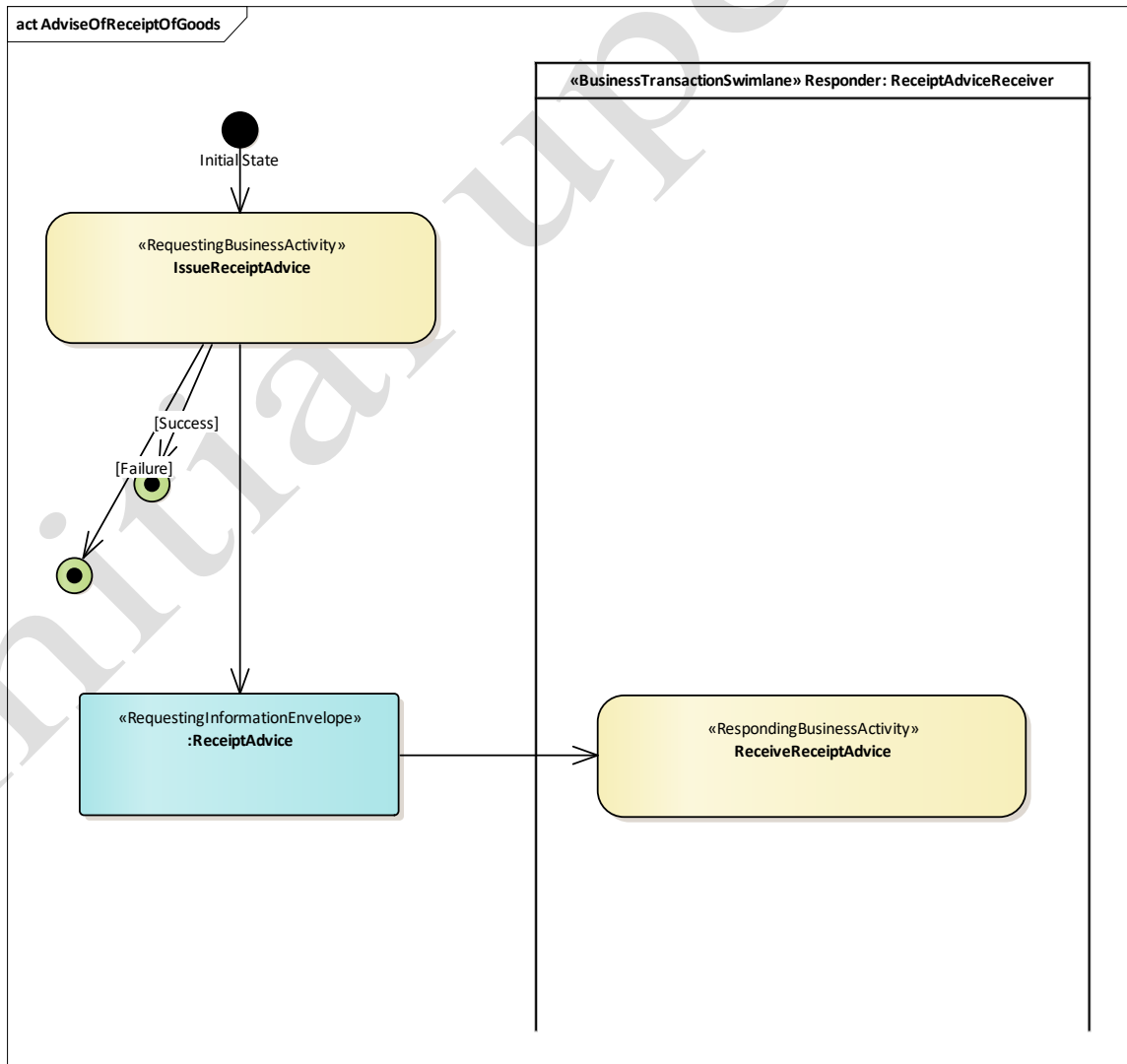


Figure 8-7 Activity Diagram Advise of Receipt of Goods

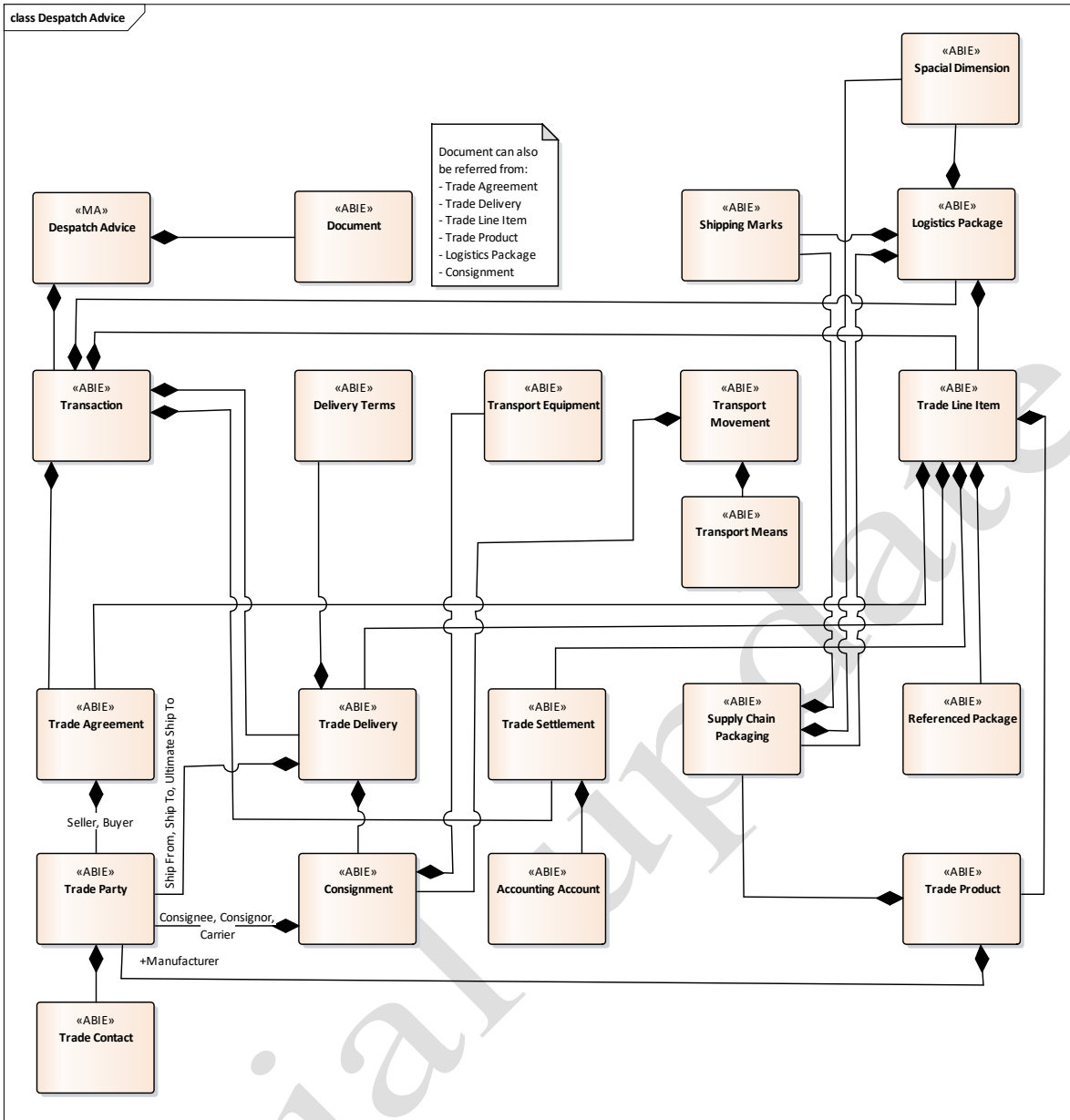


Figure 8-8 Business Entity Class Diagram – Despatch Advice

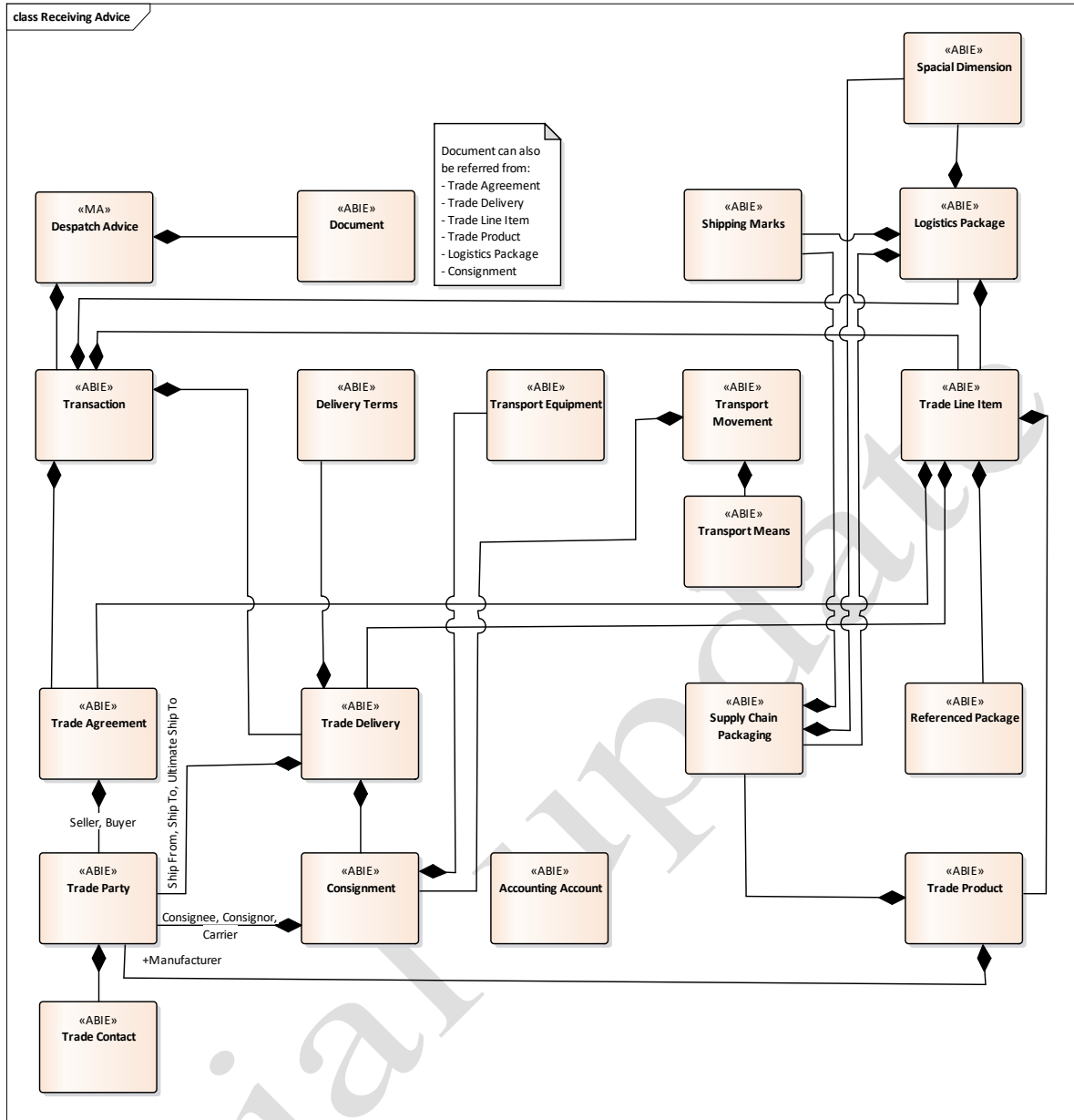


Figure 8-9 Business Entity Class Diagram – Receiving Advice

Note:

Compared to the Despatch Advice message, the Receiving Advice message does not contain the class “Trade Settlement”.

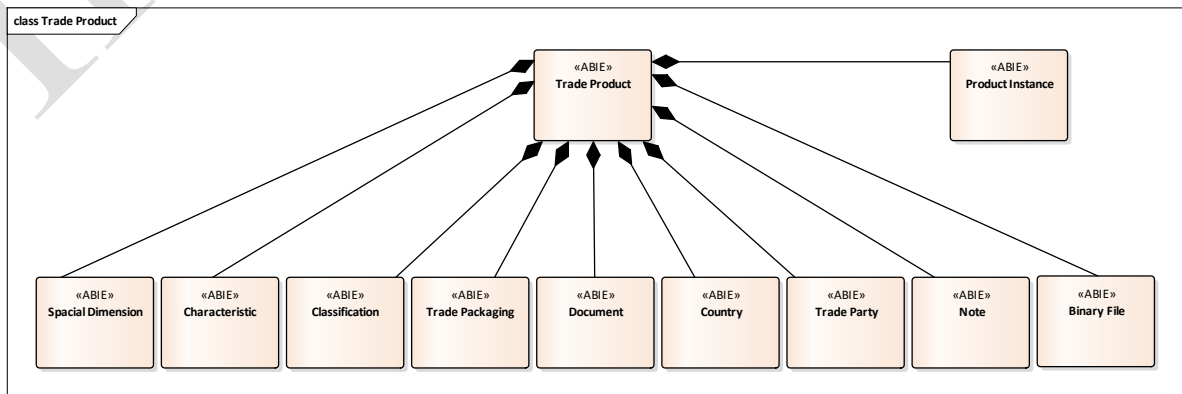


Figure 8-10 Business Entity Class Diagram – Trade Product

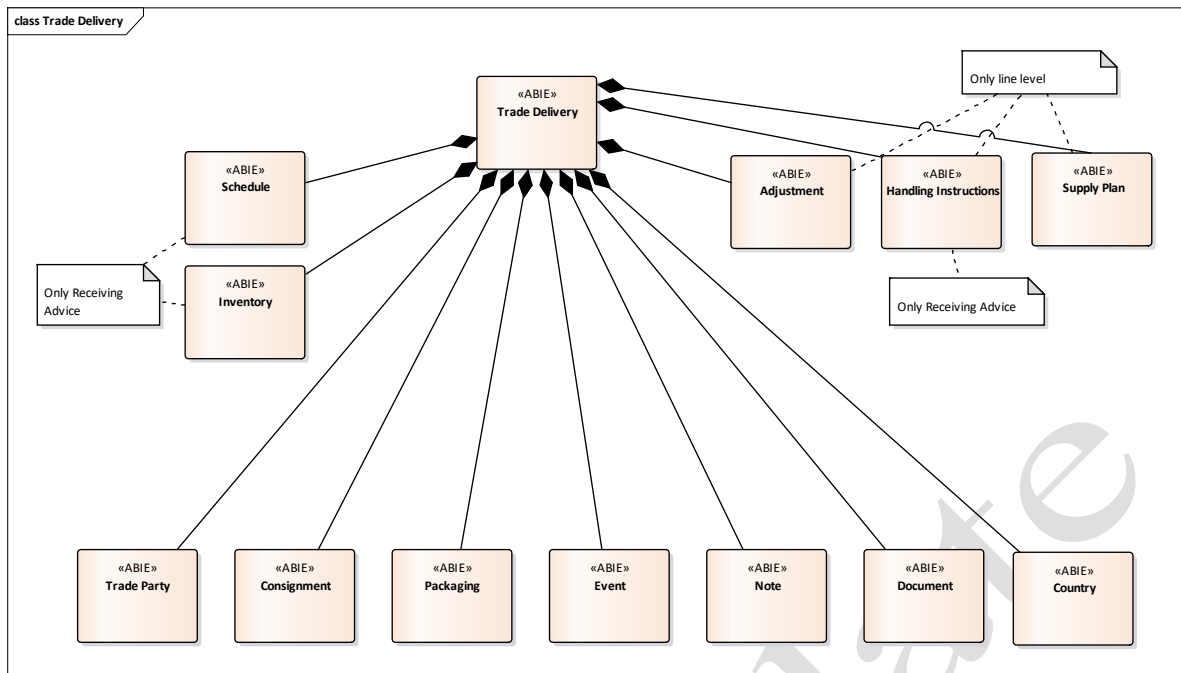


Figure 8-11 Business Entity Class Diagram – Trade Delivery

8.3 Business Documents

8.3.1 Despatch Advice

Note:

Only details of most important associations (assoc) are listed, Details of entities used in the associations can be found in the published CCL.

Despatch Advice				
HEADER level				
Entity	Min	Max	Exchanged Document Context	
Att	0	1	Transaction ID	The transaction identifier.
Att	0	1	Process Transaction Date Time	The date time when the transaction was processed.
Assoc	0	unbounded	Scenario parameter	A scenario context parameter specified for the document context.
Assoc	0	unbounded	Business Process parameter	A BIM context parameter specified for the document context.
Assoc	0	unbounded	BIM parameter	A BIM context parameter specified for the document context.
Assoc	0	unbounded	Application parameter	A application context parameter specified for the document context.
Assoc	0	unbounded	Guideline parameter	A guideline context parameter specified for the document context.

Despatch Advice				
Assoc	0	unbounded	Subset parameter	A subset context parameter specified for the document context.
Assoc	0	unbounded	Message standard parameter	A message context parameter specified for the document context.
Assoc	0	unbounded	User parameter	A user context parameter specified for the document context.
Entity	Min	Max	Exchanged Document	Data exchanged for a receiving advice between two or more parties in written, printed or electronic form.
Att	1	1	ID	The identifier.
Att	0	1	Version ID	The version identifier.
Att	1	1	Issue Date Time	The issuance date.
Att	0	1	Type Code	The type code.
Att	0	1	Status Code	The status code.
Att	0	unbounded	Response Request Type Code	A response requested type code.
Att	0	unbounded	Purpose Code	A purpose code.
Att	0	1	Purpose Text	The purpose (in text).
Att	0	1	Control Requirement Indicator	The indication that the document has control requirements.
Att	0	1	Copy Indicator	The indication that this document is a copy.
Att	0	unbounded	Name	A name.
Assoc	0	1	Issuer	The party that issues this document.
Assoc	0	unbounded	Note	A note included.
Entity			Trade Transaction	Trade line items, trade agreement and trade delivery details included, at header level, in a Receiving Advice trade transaction.
Att	0	unbounded	Shipment ID	A shipment identifier.
Assoc	1	1	Trade Agreement	The applicable trade agreement.
Assoc	1	1	Trade Settlement	The applicable trade settlement.
Assoc	1	1	Trade Delivery	The applicable trade delivery.
Assoc	0	unbounded	Logistics Package	Included logistics packages.
Entity			Trade Agreement	Contractual terms of a trade agreement for a receiving advice.
Att	0	unbounded	Seller Reference	A seller reference.
Att	0	1	Impact Code	The impact code.

Despatch Advice				
Att	0	1	Priority Code	The priority code.
Assoc	0	1	Buyer	The buyer.
Assoc	0	1	Seller	The seller.
Assoc	0	1	Delivery Terms	The delivery terms.
Assoc	0	unbounded	Additional Document	An additional referenced document.
Assoc	0	1	Buyer Order Document	The referenced buyer order.
Assoc	0	1	Seller Order Document	The referenced seller order.
Assoc	0	unbounded	Contract Document	A referenced contract.
Entity			Trade Delivery	Shipping arrangements and movement of goods and or services including despatch and delivery pertaining to a receiving advice.
Att	0	1	Status Code	The status code.
Att	0	unbounded	Goods Receipt Physical State Description	A description specifying the physical state of the goods.
Att	0	1	Goods Receipt Physical State Code	A code specifying the physical state of the goods.
Att	0	1	Final Delivery Indicator	The indication that the delivery is the final delivery.
Att	0	1	Pick-Up Availability Date Time	The date when this delivery is available for pick-up.
Assoc	1	1	Ship From Party	The ship from party.
Assoc	1	1	Ship To Party	The ship to party.
Assoc	0	1	Ultimate Ship To Party	The ultimate ship to party.
Assoc	0	unbounded	Additional Document	An additional referenced document.
Assoc	0	1	Shipment Schedule Document	The referenced shipment schedule document.
Assoc	0	1	Actual Despatch Event	The actual despatch event.
Assoc	0	1	Actual Loading Event	The actual loading event.
Assoc	0	1	Requested Delivery Event	The requested delivery event.
Assoc	0	1	Confirmed Release Event	The confirmed release event.
Assoc	0	1	Planned Delivery Event	The planned delivery event.
Assoc	0	unbounded	Consignment	A related consignment.
Assoc	0	unbounded	Included Supply Chain Packaging	Included supply chain packaging.
Assoc	0	unbounded	Note	An included note.
Entity			Trade Settlement	The trade settlement applicable to the trade transaction.
Att	0	1	Price Currency	The price currency.
Assoc	0	unbounded	Purchase Accounting Account	A purchase accounting account.
Assoc	0	unbounded	Sales Accounting Account	A sales accounting account.
Assoc	0	1	Applicable Tax	The applicable tax.
Assoc	0	1	Monetary Summation	The monetary summation.

Despatch Advice				
Assoc	0	1	Payment Terms	The payment terms.
Line level				
Entity			Trade Line Item	Information specific to a trade line item.
Assoc	1	1	Associated Document Line	The associated document line.
Assoc	0	1	Trade Agreement	The specified trade agreement.
Assoc	0	1	Trade Delivery	The specified trade delivery.
Assoc	0	1	Trade Settlement	The specified trade settlement.
Assoc	0	unbounded	Trade Product	A trade product.
Assoc	0	unbounded	Referenced Package	A referenced logistics package.
Entity			Trade Agreement	Contractual terms of a supply chain trade agreement for a receiving advice line.
Att	0	unbounded	Seller Reference	A seller reference.
Att	0	unbounded	Buyer Reference	A buyer reference.
Att	0	unbounded	Reference	A reference.
Att	0	1	Impact Code	The impact code.
Att	0	1	Priority Code	The priority code.
Assoc	0	unbounded	Additional Document	An additional referenced document.
Assoc	0	1	Buyer Order Document	The referenced buyer order.
Assoc	0	1	Seller Order Document	The referenced seller order.
Assoc	0	unbounded	Contract Document	A referenced contract.
Assoc	0	unbounded	Promotional Deal Document	A referenced promotional deal.
Assoc	0	1	Product Net Price	The net price for the product.
Entity			Trade Delivery	Shipping arrangements and movement of goods and or services including despatch and delivery pertaining to a receiving advice.
Att	0	1	Status Code	The status code.
Att	0	1	Billed Quantity	The quantity billed.
Att	0	unbounded	Goods Receipt Physical State Description	A description specifying the physical state of the goods.
Att	0	1	Goods Receipt Physical State Code	A code specifying the physical state of the goods.
Att	0	1	Charge Free Quantity	The charge free quantity.
Att	0	1	Despatched Quantity	The quantity despatched.
Att	0	1	Package Quantity	The number of packages.
Att	0	1	Requested Quantity	The requested quantity.
Att	0	1	Per Package Unit Quantity	The number of units per package.
Att	0	1	Product Unit Quantity	The number of product units.

Despatch Advice				
Att	0	1	Remaining Requested Quantity	The remaining requested quantity.
Att	0	1	Theoretical Weight Measure	The theoretical weight.
Att	0	1	Gross Weight Measure	The gross weight (mass).
Att	0	1	Net Weight Measure	The net weight (mass).
Att	0	1	Ultimate Ship To Delivery Date Time	The date for this delivery to the ultimate ship to party.
Assoc	0	1	Ship From Party	The ship from party.
Assoc	0	1	Ship To Party	The ship to party.
Assoc	0	1	Ultimate Ship To Party	The ultimate ship to party.
Assoc	0	1	Delivery Adjustment	The delivery adjustment.
Assoc	0	unbounded	Handling Instructions	Handling instructions.
Assoc	0	unbounded	Supply Plan	A supply plan.
Assoc	0	1	Actual Despatch Event	The actual despatch event.
Assoc	0	1	Actual Pickup Event	The actual pickup event.
Assoc	0	1	Requested Delivery Event	The requested delivery event.
Assoc	0	unbounded	Consignment	A related consignment.
Assoc	0	unbounded	Included Referenced Package	Included Referenced Package
Entity			Trade Settlement	The trade settlement applicable to the trade transaction.
Assoc	0	unbounded	Purchase Accounting Account	A purchase accounting account.
Assoc	0	unbounded	Sales Accounting Account	A sales accounting account.
Assoc	0	1	Applicable Tax	The applicable tax.
Assoc	0	1	Monetary Summation	The monetary summation.
Details of most important associated entities				
Entity			Consignment	A separately identifiable collection of goods items to be transported or available to be transported from one consignor to one consignee in a Cross Industry (CI) supply chain via one or more modes of transport under a single transport contract.
Att	0	unbounded	Associated Invoice Amount	An associated monetary value of an invoice.
Att	0	1	Declared Value For Customs Amount	The monetary value declared for customs purposes.
Att	0	1	Total Charge Amount	The total monetary value of all freight and other service charges.
Att	0	1	Package. Quantity	The number of packages.

Despatch Advice				
Att	0	unbounded	Gross Weight	A gross weight (mass) which includes the weight of packaging but which excludes the weight of any transport equipment.
Att	0	unbounded	Net Weight	A net weight (mass) which excludes the weight of packaging and that of any transport equipment.
Att	0	unbounded	Gross Volume	A gross volume.
Att	0	1	Net Volume	The net volume which excludes all packaging.
Att	0	unbounded	Chargeable Weight	A chargeable weight.
Assoc	0	1	Consignor	The consignor party.
Assoc	0	1	Consignee	The consignee party.
Assoc	0	unbounded	Logistics Transport Movement	A logistics transport movement
Assoc	0	1	Customs Import Agent	The party acting as an agent with respect to the customs or other regulatory import procedures.
Assoc	0	1	Customs Export Agent	The party acting as an agent with respect to the customs or other regulatory export procedures.
Assoc	0	1	Carrier	The carrier party.
Assoc	0	1	Transport Contract	The referenced transport contract document, such as an air waybill or a sea waybill.
Assoc	0	unbounded	Utilized Transport Equipment	A piece of utilized transport equipment.
Assoc	0	1	Freight Forwarder	The freight forwarder party.
Assoc	0	unbounded	Grouping Centre	A grouping centre party.
Assoc	0	unbounded	Consignment Item	An included consignment item.
Assoc	0	unbounded	Associated Referenced Document	An associated referenced document, such as the certificate of origin or phyto certificate.
Assoc	0	1	Applicable Transport Cargo Insurance	The applicable transport cargo insurance.
Assoc	0	1	Applicable Cross-Border Customs Valuation	The applicable cross-border customs valuation.
Assoc	0	unbounded	Applicable Cross-Border Regulatory Procedure	A applicable cross-border regulatory procedure.
Assoc	0	1	Transit Location	The transit location.
Entity			Document Line	A document line for a receiving advice line.
Att	1	1	ID	The identifier.
Att	0	1	Status Code	The status code.

Despatch Advice				
Att	0	1	Status Reason Code	The line status reason code.
Assoc	0	unbounded	Note	An included note.
Entity			Logistics Package	A self-contained wrapping or container within which goods are contained, for this receiving advice line.
Att	0	1	ID	The identifier.
Att	0	1	Global ID	The global identifier.
Att	0	1	Parent ID	The parent identifier..
Att	0	1	Type Code	The type code
Att	0	1	Type Text	The type (in text).
Att	0	1	Level Code	The package level code.
Att	0	1	Description	The description.
Att	0	1	Gross Volume	The gross volume.
Att	0	1	Gross Weight	The gross weight (mass).
Att	0	unbounded	Information	Information.
Att	0	1	Item Quantity	The number of logistics package at item level.
Att	0	1	Net Weight	The net weight (mass).
Att	0	1	Nominal Gross Volume	The nominal gross volume.
Att	0	1	Nominal Gross Weight	The nominal gross weight (mass).
Att	0	1	Per Package Unit Quantity	The number of units per package.
Att	0	1	Sequence Number	The sequence number.
Att	0	1	Series End ID	The identifier of the end of a series of packages within this logistics package.
Att	0	1	Series Start ID	The identifier of the start of a series of packages within this logistics package.
Assoc	0	unbounded	Shipping Marks	Physical shipping marks and barcode information.
Assoc	0	unbounded	Included Trade Line Item	A supply chain trade line item included in this logistics package.
Assoc	0	1	Linear Spatial Dimension	The linear spatial dimensions.
Assoc	0	unbounded	Used Supply Chain Packaging	Supply chain packaging used for this logistics package.
Assoc	0	unbounded	Despatch Note Associated Document	A despatch note associated with this logistics package.
Assoc	0	unbounded	Returnable Asset Instructions	Returnable asset instructions.
			Logistics Transport Equipment	A piece of equipment used to hold, protect or secure cargo for logistics purposes.

Despatch Advice				
Att	0	1	Size/Type Code	The code specifying the characteristic or characteristics of this piece of transport equipment, such as the ISO 6346 transport equipment size and type code.
			Logistics Transport Means	A piece of equipment used to hold, protect or secure cargo for logistics purposes.
Att	0	1	Type Code	The code specifying the type of logistics means of transport (Reference UNECE Recommendation 28).
Entity			Logistics Transport Movement	The conveyance (physical carriage) of goods or other objects used for logistics transport purposes.
Att	0	1	Stage Code	The code specifying the stage of this logistics transport movement.
Att	0	1	Mode Code	The code specifying the mode, such as by air, sea, rail, road or inland waterway, for this logistics transport movement.
Att	0	1	Mode Text	The mode, expressed as text, of this logistics transport movement.
Att	0	1	Transit Direction Code	The code specifying the transit direction of this logistics transport movement.
Entity			Product	Any tangible output or service produced by human or mechanical effort or by a natural process for Cross Industry (CI) trade purposes.
Att	0	1	ID	The identifier.
Att	0	1	Global ID	The global identifier.
Att	0	1	Seller Assigned ID	The seller assigned identifier.
Att	0	1	Buyer Assigned ID	The buyer assigned identifier.
Att	0	1	Manufacturer Assigned ID	The manufacturer assigned identifier.
Att	0	unbounded	Name	A name.
Att	0	1	Trade Name	The trade name.
Att	0	unbounded	Description	A description.
Att	0	1	Type Code	The type code.

Despatch Advice				
Att	0	1	Net Weight	The net weight (mass).
Att	0	1	Gross Weight	The gross weight (mass).
Att	0	1	Drained Net Weight	The drained net weight (mass).
Att	0	1	Brand Name	The brand name.
Att	0	1	Sub-Brand Name	The sub-brand name.
Att	0	unbounded	Product GroupID	An product group identifier.
Att	0	1	Area Density	The area density, such as paper density in grams per square metre (gsm).
Att	0	1	Colour Code	The colour code.
Att	0	unbounded	Colour Description	A description of the colour.
Att	0	unbounded	Use Description	A description of a use.
Att	0	unbounded	Designation	A designation.
Att	0	unbounded	End Item Name	An end item name.
Att	0	1	Latest Product Data Change Date Time	The date of the latest change in the product data.
Att	0	unbounded	End Item Type Code	A code specifying a type of end item.
Att	0	1	Variable Measure Indicator	The indication that instances of the product have a variable measure, such as weight, length or volume.
Att	0	unbounded	Additional Description	An additional description.
Att	0	unbounded	Batch ID	A batch identifier.
Att	0	unbounded	Common Name	A common name.
Att	0	unbounded	Concise Description	A concise description.
Att	0	1	Configurable Indicator	The indication that the product is configurable.
Att	0	1	Content Unit Quantity	The number of content units.
Att	0	unbounded	Customer Assigned ID	A customer assigned identifier.
Att	0	unbounded	Gross Volume	A gross volume.
Att	0	unbounded	Industry Assigned ID	An industry assigned identifier.
Att	0	unbounded	Model ID	A model identifier.
Att	0	unbounded	Net Volume	A net volume.
Att	0	1	Recycling Type Code	The recycling code.
Att	0	unbounded	Status Code	A status code.
Att	0	unbounded	Unit Type Code	A unit type code.
Assoc	0	unbounded	Applicable Product Characteristic	A product characteristic.
Assoc	0	unbounded	Applicable Material Goods Characteristic	A material goods characteristic.
Assoc	0	unbounded	Designated Product Classification	A designated product classification.
Assoc	0	unbounded	Individual Trade Product Instance	An individual instance.

Despatch Advice				
Assoc	0	unbounded	Certification Evidence Reference	A referenced certification evidence document.
Assoc	0	unbounded	Inspection Reference	A referenced inspection document.
Assoc	0	1	Origin Trade Country	The country of origin.
Assoc	0	1	Linear Spatial Dimension	Linear spatial dimensions.
Assoc	0	1	Minimum Linear Spatial Dimension	Minimum linear spatial dimensions.
Assoc	0	1	Maximum Linear Spatial Dimension	Maximum linear spatial dimensions.
Assoc	0	1	Manufacturer Party	The party who is the manufacturer.
Assoc	0	1	MSDS Reference	The referenced Material Safety Data Sheet (MSDS) document.
Assoc	0	unbounded	Additional Reference	An additional referenced document.
Assoc	0	unbounded	Information	An information note.
Assoc	0	1	Brand Owner Party	The party that owns the brand.
Assoc	0	1	Legal Rights Owner Party	The party that owns the legal rights.
Assoc	0	unbounded	Presentation Specified Binary File	A binary presentation file.
Assoc	0	unbounded	Buyer Supplied Parts Reference Document	A buyer referenced supplied parts document.
Entity			Referenced Package	A self-contained wrapping or container within which goods are contained, for this receiving advice line.
Att	0	1	ID	The identifier.
Att	0	1	Global ID	The global identifier.
Att	0	1	Parent ID	The parent identifier..
Att	0	1	Type Code	The type code
Att	0	1	Type Text	The type (in text).
Att	0	1	Level Code	The package level code.
Att	0	1	Description	The description.
Att	0	1	Gross Volume	The gross volume.
Att	0	1	Gross Weight	The gross weight (mass).
Att	0	unbounded	Information	Information.
Att	0	1	Item Quantity	The number of logistics package at item level.
Att	0	1	Net Weight	The net weight (mass).
Att	0	1	Nominal Gross Volume	The nominal gross volume.
Att	0	1	Nominal Gross Weight	The nominal gross weight (mass).
Att	0	1	Per Package Unit Quantity	The number of units per package.
Att	0	1	Sequence Number	The sequence number.

Despatch Advice				
Att	0	1	Series End ID	The identifier of the end of a series of packages within this logistics package.
Att	0	1	Series Start ID	The identifier of the start of a series of packages within this logistics package.
Entity			Supply Chain Packaging	Any material with which supply chain goods are packaged, such as a box or bubble wrap.
Att	0	1	Type Code	The code specifying the type of packaging.
Att	0	1	Type Text	The type of packaging.
Att	0	unbounded	Description	A description.
Att	0	unbounded	Condition Code	A code specifying the condition .
Att	0	unbounded	Disposal Method Code	A code specifying the disposal method .
Att	0	1	Capacity Measure	The measure of the capacity .
Att	0	unbounded	Weight	A measure of the weight .
Att	0	unbounded	Instruction Code	A code specifying an instruction.
Att	0	1	Level Code	The code specifying a level of packaging.
Att	0	1	Sequence Number	The number of a sequence of the packaging.
Att	0	1	Maximum Stackability Quantity	The number of packaging units which can be stacked on top of each other.
Att	0	1	Maximum Stackability Weight	The measure of the maximum stackability weight.
Att	0	1	Returnable Indicator	The indication that the packaging is returnable.
Att	0	1	Customer Facing Total Unit Quantity	The number of units facing the customer, such as placed on a retail shelf.
Att	0	unbounded	Total Unit Quantity	A number of units contained in this packaging.
Att	0	1	Layer Total Unit Quantity	The number of units in a layer.
Att	0	1	Content Layer Quantity	The number of content layers that are or may be packaged with this packaging, such as the number of layers of product on a pallet.
Att	0	unbounded	Additional Instruction Code	A code specifying an additional instruction.
Att	0	1	Additional Instruction Indicator	The indication that there is an additional instruction.

Despatch Advice				
Assoc	0	1	Dimensions	The linear spatial dimensions .
Assoc	0	1	Minimum Dimensions	The minimum linear spatial dimensions.
Assoc	0	1	Maximum Dimensions	The maximum linear spatial dimensions.
Assoc	0	unbounded	Marking	A marking specified for this packaging, such as an inscription, stamp or label to indicate date etc.
Assoc	0	unbounded	Goods Characteristic	Material goods characteristic applicable to this packaging.
Assoc	0	unbounded	Disposal Instructions	Disposal instructions.
Assoc	0	unbounded	Returnable Asset Instructions	Returnable asset instructions.

8.3.2 Receiving Advice

Note:

Only details of most important associations (assoc) are listed, Details of entities used in the associations can be found in the published CCL.

Receiving Advice				
HEADER level				
Entity	Min	Max	Exchanged Document Context	
Att	0	1	Transaction ID	The transaction identifier.
Att	0	1	Process Transaction Date Time	The date time when the transaction was processed.
Assoc	0	unbounded	Scenario parameter	A scenario context parameter specified for the document context.
Assoc	0	unbounded	Business Process parameter	A BIM context parameter specified for the document context.
Assoc	0	unbounded	BIM parameter	A BIM context parameter specified for the document context.
Assoc	0	unbounded	Application parameter	A application context parameter specified for the document context.
Assoc	0	unbounded	Guideline parameter	A guideline context parameter specified for the document context.
Assoc	0	unbounded	Subset parameter	A subset context parameter specified for the document context.
Assoc	0	unbounded	Message standard parameter	A message context parameter specified for the document context.

Receiving Advice				
Assoc	0	unbounded	User parameter	A user context parameter specified for the document context.
Entity	Min	Max	Exchanged Document	Data exchanged for a receiving advice between two or more parties in written, printed or electronic form.
Att	1	1	ID	The identifier.
Att	0	1	Global ID	The global identifier.
Att	0	unbounded	Customs ID	An identifier for customs purposes.
Att	0	1	Revision ID	The identifier of the revision.
Att	0	1	Previous Revision ID	The identifier of the previous revision of this document.
Att	0	unbounded	Sender Assigned ID	A sender assigned identifier.
Att	0	unbounded	Recipient Assigned ID	A recipient assigned identifier.
Att	0	unbounded	Trader Assigned ID	A trader assigned identifier.
Att	0	unbounded	Suffix ID	A suffix identifier.
Att	0	1	Version ID	The version identifier.
Att	0	1	Item ID	The identifier of an item in this document.
Att	0	1	Page ID	The identifier of a specific page in this document.
Att	1	1	Issue Date Time	The issuance date.
Att	0	1	Acceptance Date Time	The acceptance date.
Att	0	1	Cancellation Date Time	The cancellation date.
Att	0	unbounded	Rejection Response Date Time	A rejection response date.
Att	0	1	Submission Date Time	The formal submission date.
Att	0	1	Revision Date Time	The revision date.
Att	0	unbounded	Response Date Time	A response date.
Att	0	1	Type Code	The type code.
Att	0	1	Urgency Code	The urgency code.
Att	0	1	Status Code	The status code.
Att	0	unbounded	Amendment Purpose Code	An amendment purpose code.
Att	0	unbounded	Language Code	An identifier for a language used.
Att	0	1	Category Code	The category code.
Att	0	unbounded	Response Request Type Code	A response requested type code.
Att	0	unbounded	Response Reason Code	A response reason code.
Att	0	unbounded	Purpose Code	A purpose code.
Att	0	1	Purpose Text	The purpose (in text).
Att	0	1	Control Requirement Indicator	The indication that the document has control requirements.

Receiving Advice				
Att	0	1	Copy Indicator	The indication that this document is a copy.
Att	0	1	Electronic Presentation Indicator	The indication that this document is presented in an electronic format.
Att	0	1	Copy Issued Quantity	The number of copies issued.
Att	0	1	Copy Required Quantity	The number of copies required.
Att	0	1	Original Issued Quantity	The number of originals issued.
Att	0	1	Original Required Quantity	The number of originals required.
Att	0	1	Total Page Quantity	The total number of pages.
Att	0	1	Item Quantity	The number of line items in this document.
Att	0	1	Line Count	The count of the number of lines in this document.
Att	0	unbounded	Description	A description.
Att	0	unbounded	Disposition Text	A disposition.
Att	0	unbounded	Information	Information about this document.
Att	0	unbounded	Remark	A remark.
Att	0	unbounded	Summary Information	Summary information.
Att	0	unbounded	Header Information	Information at header level of this document.
Att	0	unbounded	Name	A name.
Att	0	unbounded	Attached Binary Object	A binary object that is attached or otherwise appended to this document.
Assoc	0	1	Issuer	The party that issues this document.
Assoc	0	1	Sender	The party that sends this document.
Assoc	0	unbounded	Recipient	A party that receives this document.
Assoc	0	1	Owner	The party that owns this document.
Assoc	0	unbounded	Agent	A party representing another party.
Assoc	0	1	First Signatory Authentication	The first or primary signature that authenticates this document.
Assoc	0	unbounded	Referenced Document	Other referenced documents.
Assoc	0	unbounded	Note	A note included.
Assoc	0	unbounded	Attached File	A binary file attached to this document.
Assoc	0	1	Effective Period	The effective period.

Receiving Advice				
Entity			Trade Transaction	Trade line items, trade agreement and trade delivery details included, at header level, in a Receiving Advice trade transaction.
Att	0	unbounded	ID	An identifier.
Att	0	unbounded	Shipment ID	A shipment identifier.
Att	0	1	Type Code	The type code.
Att	0	unbounded	Information	Information.
Att	0	1	Line Item Quantity	The number of line items.
Att	0	1	Sales Agent Assigned ID	The identifier assigned by the sales agent.
Assoc	1	1	Trade Agreement	The applicable trade agreement.
Assoc	1	1	Trade Delivery	The applicable trade delivery.
Assoc	0	unbounded	Logistics Package	Included logistics packages.
Entity			Trade Agreement	Contractual terms of a trade agreement for a receiving advice.
Att	0	unbounded	Seller Reference	A seller reference.
Att	0	unbounded	Buyer Reference	A buyer reference.
Att	0	unbounded	Reference	A reference.
Att	0	1	Impact Code	The impact code.
Att	0	1	Priority Code	The priority code.
Att	0	1	Incremental Product Orderable Quantity	The incremental product orderable quantity.
Att	0	1	Information Use Restriction Indicator	The indication that the use of the information provided is restricted.
Att	0	1	Product Free of Charge Indicator	The indication that the product is free of charge.
Att	0	1	Product Made To Order Indicator	The indication that the product is manufactured, built or customized only after receipt of order.
Att	0	1	Product Orderable Indicator	The indication that the product can be ordered.
Att	0	1	Product Reorderable Indicator	The indication that the product can be reordered.
Assoc	0	1	Buyer	The buyer.
Assoc	0	1	Seller	The seller.
Assoc		unbounded	Carrier	A carrier.
Assoc	0	1	Delivery Terms	The delivery terms.
Assoc	0	1	Commercial Terms	The commercial terms.

Receiving Advice				
Assoc	0	unbounded	Additional Document	An additional referenced document.
Assoc	0	1	Buyer Order Document	The referenced buyer order.
Assoc	0	1	Seller Order Document	The referenced seller order.
Assoc	0	1	Promotional Deal Document	The referenced promotional deal document.
Assoc	0	unbounded	Contract Document	A referenced contract.
Assoc	0	unbounded	Customer Order Document	A referenced customer order document.
Assoc	0	unbounded	Customer Reference Document	A customer reference document.
Assoc	0	unbounded	Demand Forecast Document	A referenced demand forecast document.
Assoc	0	unbounded	Material Returns Document	A referenced material returns document.
Assoc	0	unbounded	Sales Conditions Document	A referenced sales conditions document.
Assoc	0	unbounded	Supply Instruction Document	A referenced supply instruction.
Assoc	0	1	Ordering Period	The ordering period.
Assoc	0	1	Shipping Period	The shipping period.
Assoc	0	unbounded	Applicable Location	A logistics location or place.
Assoc	0	unbounded	Target Market Country	A target market country.
Entity			Trade Delivery	Shipping arrangements and movement of goods and or services including despatch and delivery pertaining to a receiving advice.
Att	0	1	Status Code	The status code.
Att	0	1	Final Delivery Indicator	The indication that the delivery is the final delivery.
Att	0	1	Over Delivery Allowed Indicator	The indication that over delivery is allowed.
Att	0	1	Despatched Quantity	The quantity despatched.
Att	0	1	Individual Package Quantity	The quantity within an individual package.
Att	0	1	Per Package Unit Quantity	The number of units per package.
Att	0	1	Package Quantity	The number of packages.
Att	0	1	Product Unit Quantity	The number of product units.
Att	0	1	Requested Quantity	The quantity requested.
Att	0	1	Chargeable Weight	The chargeable weight.
Att	0	1	Theoretical Weight	The theoretical weight.
Att	0	1	Gross Weight	The gross weight (mass).
Att	0	1	Net Weight	The net weight (mass).
Att	0	1	Gross Volume	The gross volume.
Att	0	1	Net Volume	The net volume.
Att	0	1	Pick-Up Availability Date Time	The date when this delivery is available for pick-up.

Receiving Advice				
Att	0	1	Ultimate Ship To Delivery Date Time	The date when the delivery is delivered to the ultimate ship to party.
Att	0	1	Goods Ownership Change. Date Time	The date when the goods of this trade delivery changed from ownership.
Assoc	1	1	Ship From Party	The ship from party.
Assoc	1	1	Ship To Party	The ship to party.
Assoc	0	1	Ultimate Ship To Party	The ultimate ship to party.
Assoc	0	unbounded	Disposal Party	A disposal party.
Assoc	0	unbounded	Logistics Service Provider	A logistics service provider party.
Assoc	0	unbounded	Inventory Manager	An inventory manager party.
Assoc	0	1	Final Destination Country	The country of final destination.
Assoc	0	unbounded	Additional Document	An additional referenced document.
Assoc	0	1	Delivery Note Document	The referenced delivery note.
Assoc	0	1	Despatch Advice Document	The referenced despatch advice.
Assoc	0	1	Packing List Document	The referenced packing list.
Assoc	0	unbounded	Receiving Advice Document	A referenced receiving advice.
Assoc	0	1	Shipment Schedule Document	The referenced shipment schedule document.
Assoc	0	1	Order Response Document	The order response document.
Assoc	0	1	Order Change Document	The order change document.
Assoc	0	unbounded	Delivery Instructions	Delivery instructions.
Assoc	0	1	Actual Despatch Event	The actual despatch event.
Assoc	0	1	Actual Receipt Event	The actual receipt event.
Assoc	0	1	Actual Loading Event	The actual loading event.
Assoc	0	1	Actual Unloading Event	The actual unloading event.
Assoc	0	1	Handling Event	The handling event.
Assoc	0	1	Requested Despatch Event	The requested despatch event.
Assoc	0	1	Requested Delivery Event	The requested delivery event.
Assoc	0	1	Confirmed Release Event	The confirmed release event.
Assoc	0	1	Confirmed Delivery Event	The confirmed delivery event.
Assoc	0	1	Confirmed Despatch Event	The confirmed despatch event.
Assoc	0	1	Confirmed Pick-Up Event	The confirmed pick-up event.
Assoc	0	1	Planned Delivery Event	The planned delivery event.
Assoc	0	1	Planned Despatch Event	The planned despatch event.
Assoc	0	1	Planned Pick-Up Event	The planned pick-up event.
Assoc	0	unbounded	Consignment	A related consignment.

Receiving Advice				
Assoc	0	unbounded	Included Supply Chain Packaging	Included Supply Chain Packaging
Assoc	0	unbounded	Note	An included note.
Line level				
Entity			Trade Line Item	Information specific to a trade line item.
Att	0	1	ID	The identifier.
Att	0	unbounded	Additional ID	An additional identifier.
Att	0	unbounded	Barcode ID	A barcode identifier.
Att	0	1	Type Code	The type code.
Att	0	1	Type Extension Code	The type extension code.
Att	0	1	Description Code	The code specifying a description of this supply chain trade line item.
Assoc	1	1	Associated Document Line	The associated document line.
Assoc	0	1	Trade Agreement	The specified trade agreement.
Assoc	0	1	Trade Delivery	The specified trade delivery.
Assoc	0	unbounded	Trade Product	A trade product.
Assoc	0	unbounded	Referenced Package	A referenced logistics package.
Entity			Trade Agreement	Contractual terms of a supply chain trade agreement for a receiving advice line.
Att	0	unbounded	Seller Reference	A seller reference.
Att	0	unbounded	Buyer Reference	A buyer reference.
Att	0	unbounded	Reference	A reference.
Att	0	1	Impact Code	The impact code.
Att	0	1	Priority Code	The priority code.
Att	0	1	Product Availability Code	The product availability code.
Att	0	1	Contractual Lead Time Measure	The expected time interval between the receipt of an order and its pick-up fulfilment.
Att	0	1	Delivery Order Fulfilment Lead Time Measure	The expected time interval between the receipt of an order and its delivery fulfilment.
Att	0	1	Pick-Up Order Fulfilment Lead Time Measure	The expected time interval between the receipt of an order and its pick-up fulfilment.

Receiving Advice				
Att	0	1	Seller Proposal Lead Time Measure	The expected time interval between the receipt of an order and its pick-up fulfilment, proposed by the seller.
Att	0	1	Incremental Product Orderable Quantity	The incremental product orderable quantity.
Att	0	1	Information Use Restriction Indicator	The indication that the use of the information provided is restricted.
Att	0	1	Minimum Product Orderable Quantity	The minimum product orderable quantity.
Att	0	1	Maximum Product Orderable Quantity	The maximum product orderable quantity.
Att	0	1	Seller Proposal Minimum Product Orderable Quantity	The minimum product orderable quantity proposed by the seller.
Att	0	1	Order Product Unit Of Measure	The order product unit code, such as kilogram or litre.
Att	0	1	Resale Product Unit Of Measure	The resale product unit code, such as kilogram or litre.
Att	0	1	Product Free of Charge Indicator	The indication that the product is free of charge.
Att	0	1	Product Made To Order Indicator	The indication that the product is manufactured, built or customized only after receipt of order.
Att	0	1	Product Reorderable Indicator	The indication that the product can be reordered.
Att	0	1	Product Orderable Indicator	The indication that the product can be ordered.
Assoc	0	1	Seller	The seller.
Assoc	0	1	Buyer	The buyer.
Assoc	0	unbounded	Carrier	A carrier.
Assoc	0	1	Product End User	The party acting as the end user for the products.
Assoc	0	unbounded	Additional Document	An additional referenced document.
Assoc	0	1	Buyer Order Document	The referenced buyer order.
Assoc	0	1	Seller Order Document	The referenced seller order.
Assoc	0	unbounded	Contract Document	A referenced contract.
Assoc	0	unbounded	Promotional Deal Document	A referenced promotional deal.
Assoc	0	unbounded	Customer Order Document	A referenced customer order.
Assoc	0	unbounded	Customer Reference Document	A customer reference document.
Assoc	0	unbounded	Demand Forecast Document	A referenced demand forecast document.
Assoc	0	unbounded	Material Returns Document	A referenced material returns document.

Receiving Advice				
Assoc	0	unbounded	Supply Instruction Document	A referenced supply instruction.
Assoc	0	1	Ordering Period	The ordering period.
Assoc	0	1	Shipping Period	The shipping period.
Assoc	0	1	Product Agreed Price	The agreed price for the product.
Assoc	0	1	Product Actual Price	The actual price for the product.
Assoc	0	1	Product Gross Price	A gross price for the product.
Assoc	0	1	Product Net Price	The net price for the product.
Assoc	0	1	Product Warranty	The applicable warranty for the product.
Assoc	0	unbounded	Applicable Location	An applicable logistics location or place.
Assoc	0	unbounded	Target Market Country	A target market country.
Assoc	0	unbounded	Program Mission Project	A program mission project.
Assoc	0	1	Mission Project	The mission project.
Assoc	0	unbounded	Business Flag	A business flag.
Entity			Trade Delivery	Shipping arrangements and movement of goods and or services including despatch and delivery pertaining to a receiving advice.
Att	0	1	Status Code	The status code.
Att	0	1	Final Delivery Indicator	The indication that this delivery is the final delivery.
Att	0	1	Over Delivery Allowed Indicator	The indication that over delivery is allowed.
Att	0	1	Partial Delivery Allowed Indicator	The indication that partial delivery is allowed.
Att	0	1	Fully Delivered Indicator	The indication that this delivery is fully delivered.
Att	0	1	Agreed Quantity	The quantity agreed.
Att	0	1	Billed Quantity	The quantity billed.
Att	0	1	Charge Free Quantity	The charge free quantity.
Att	0	1	Despatched Quantity	The quantity despatched.
Att	0	1	Rejected Quantity	The quantity rejected.
Att	0	1	Order Quantity	The quantity ordered.
Att	0	1	Returned Quantity	The quantity returned.
Att	0	1	Destroyed Quantity	The quantity destroyed.
Att	0	1	Deliverable Quantity	The quantity deliverable.
Att	0	1	Due In Available Quantity	The due in available quantity.
Att	0	1	Due In Forecasted Quantity	The due in forecasted quantity.
Att	0	1	Due In Requested Quantity	The due in requested quantity.
Att	0	1	Due In Returned Quantity	The due in returned quantity.

Receiving Advice				
Att	0	1	Economic Order Quantity	The economic order quantity.
Att	0	1	GFM Transfer Rejected Quantity	The Government Furnished Material (GFM) transfer rejected quantity.
Att	0	1	Individual Package Quantity	The quantity within the individual package.
Att	0	1	Package Quantity	The number of packages.
Att	0	1	Modification Forecasted Quantity	The modification of the forecasted quantity.
Att	0	1	Requested Quantity	The requested quantity.
Att	0	1	Per Package Unit Quantity	The number of units per package.
Att	0	1	Product Unit Quantity	The number of product units.
Att	0	1	Received Quantity	The received quantity.
Att	0	1	Remaining Requested Quantity	The remaining requested quantity.
Att	0	1	Reverse Billed Quantity	The reverse billed quantity.
Att	0	1	Turn In Received Quantity	The turn in quantity received.
Att	0	1	Quantity Variation Reason Code	The code specifying the quantity variation reason.
Att	0	1	Quantity Discrepancy Nature Code	The code specifying the quantity discrepancy nature.
Att	0	1	Chargeable Weight Measure	The chargeable weight.
Att	0	1	Theoretical Weight Measure	The theoretical weight.
Att	0	1	Gross Weight Measure	The gross weight (mass).
Att	0	1	Net Weight Measure	The net weight (mass).
Att	0	1	Gross Volume Measure	The gross volume.
Att	0	1	Net Volume Measure	The net volume.
Att	0	1	Ultimate Ship To Delivery Date Time	The date for this delivery to the ultimate ship to party.
Att	0	1	Pick-Up Availability Date Time	The date for pick-up availability for this delivery.
Att	0	1	Buyer Order Date Time	The date when this delivery was ordered by the buyer.
Att	0	1	Goods Ownership Change. Date Time	The date when the goods of this trade delivery changed from ownership.
Assoc	0	1	Ship From Party	The ship from party.
Assoc	0	1	Ship To Party	The ship to party.
Assoc	0	1	Ultimate Ship To Party	The ultimate ship to party.
Assoc	0	unbounded	Disposal Party	A disposal party.

Receiving Advice				
Assoc	0	unbounded	Logistics Service Provider	A logistics service provider party.
Assoc	0	unbounded	Inventory Manager	An inventory manager party.
Assoc	0	1	Final Destination Country	The country of the final destination.
Assoc	0	unbounded	Additional Document	An additional referenced document.
Assoc	0	1	Delivery Note Document	The referenced delivery note.
Assoc	0	1	Despatch Advice Document	The referenced despatch advice.
Assoc	0	1	Packing List Document	The referenced packing list.
Assoc	0	unbounded	Receiving Advice Document	A referenced receiving advice.
Assoc	0	1	Order Response Document	The order response document.
Assoc	0	1	Order Change Document	The order change document.
Assoc	0	1	Shipment Schedule	The referenced shipment schedule.
Assoc	0	unbounded	Consumption Schedule	A consumption schedule.
Assoc	0	unbounded	Delivery Schedule	A delivery schedule.
Assoc	0	unbounded	Despatch Schedule	A despatch schedule.
Assoc	0	unbounded	Logistics Schedule	A logistics schedule.
Assoc	0	unbounded	Order Schedule	An order schedule.
Assoc	0	unbounded	Receipt Schedule	A receipt schedule.
Assoc	0	unbounded	Schedule	A schedule.
Assoc	0	unbounded	Supply (Replenishment) Schedule	A supply (replenishment) schedule.
Assoc	0	1	Actual Despatch Event	The actual despatch event.
Assoc	0	1	Actual Pickup Event	The actual pickup event.
Assoc	0	1	Actual Receipt Event	The actual receipt event.
Assoc	0	1	Actual Loading Event	The actual loading event.
Assoc	0	1	Actual Unloading Event	The actual unloading event.
Assoc	0	1	Requested Despatch Event	The requested despatch event.
Assoc	0	1	Requested Delivery Event	The requested delivery event.
Assoc	0	1	Confirmed Delivery Event	The confirmed delivery event.
Assoc	0	1	Confirmed Despatch Event	The confirmed despatch event.
Assoc	0	1	Confirmed Pick-Up Event	The confirmed pick-up event.
Assoc	0	1	Planned Delivery Event	The planned delivery event.
Assoc	0	1	Planned Despatch Event	The planned despatch event.
Assoc	0	1	Planned Pick-Up Event	The planned pick-up event.
Assoc	0	1	Handling Event	The handling event.
Assoc	0	unbounded	Available Inventory	Available Inventory.
Assoc	0	unbounded	Customer Inventory	Supply chain customer inventory.

Receiving Advice				
Assoc	0	unbounded	Consignment	A related consignment.
Assoc	0	unbounded	Included Referenced Package	Included Referenced Package
Assoc	0	unbounded	Note	A note included.
Details of most important associated entities				
Entity			Academic Qualification	An academic achievement that is officially recognized.
Att	0	unbounded	Name	A name.
Att	0	1	Abbreviated Name	The abbreviated name.
Entity			Authoritative Signatory Person	A person who is authorized to sign a document, such as a customs officer or other government official.
Att	0	1	Name	The name.
Assoc	0	unbounded	Attained Academic Qualification	An attained academic qualification.
Entity			Binary File	A computer file or program stored in a binary format.
Att	0	unbounded	ID	An identifier.
Att	0	1	Version ID	The version identifier.
Att	0	unbounded	Access Text	Access information, such as security and download parameters.
Att	0	unbounded	Author Name	An author name.
Att	0	1	Character Set Code	The character set code.
Att	0	unbounded	Description	A description.
Att	0	1	Encoding Code	The encoding code.
Att	0	1	Name	The file name.
Att	0	unbounded	Included Binary Object	A binary object included in this binary file.
Att	0	1	MIME Code	The Multipurpose Internet Mail Extensions (MIME) type code.
Att	0	1	Size	The size.
Att	0	unbounded	Title	A title.
Att	0	1	URI	The Uniform Resource Identifier (URI).
Entity			Business Flag	The place, jurisdiction, state or country as a nominal (in name only) home base for one's operations or charter for this business flag.
Att	0	unbounded	Description	A description.
Att	0	unbounded	Name	A name.
Att	0	unbounded	Amount Quantity	A number of units for the amount.
Att	0	unbounded	Quantity	A number of units for the quantity.
Att	0	unbounded	Date Time	A date value.
Att	0	1	Type Code	The type code.

Receiving Advice				
Att	1	1	Value Indicator	The indication that this business flag has a value.
Entity			Commercial Terms	Conditions agreed upon between the parties with regard to the trade commercial terms of goods and or services.
Att	0	1	ID	The identifier.
Att	0	1	Type Code	The type code, such as an Incoterms code.
Att	0	1	Description	The description.
Att	0	1	Incoterms ID	The Incoterms identifier.
Att	0	1	Incoterms	The description of the incoterms.
Entity			Consignment	A separately identifiable collection of goods items to be transported or available to be transported from one consignor to one consignee in a Cross Industry (CI) supply chain via one or more modes of transport under a single transport contract.
Att	0	1	Associated Invoice Amount	An associated monetary value of an invoice.
Att	0	1	Declared Value For Customs Amount	The monetary value declared for customs purposes.
Att	0	1	Total Charge Amount	The total monetary value of all freight and other service charges.
Att	0	1	Package. Quantity	The number of packages.
Att	0	unbounded	Gross Weight	A gross weight (mass) which includes the weight of packaging but which excludes the weight of any transport equipment.
Att	0	unbounded	Net Weight	A net weight (mass) which excludes the weight of packaging and that of any transport equipment.
Att	0	unbounded	Gross Volume	A gross volume.
Att	0	1	Net Volume	The net volume which excludes all packaging.
Att	0	unbounded	Chargeable Weight	A chargeable weight.
Assoc	0	1	Consignor	The consignor party.
Assoc	0	1	Consignee	The consignee party.
Assoc	0	unbounded	Logistics Transport Movement	A logistics transport movement
Assoc	0	1	Customs Import Agent	The party acting as an agent with respect to the customs

Receiving Advice				
				or other regulatory import procedures.
Assoc	0	1	Customs Export Agent	The party acting as an agent with respect to the customs or other regulatory export procedures.
Assoc	0	1	Carrier	The carrier party.
Assoc	0	1	Transport Contract	The referenced transport contract document, such as an air waybill or a sea waybill.
Assoc	0	unbounded	Utilized Transport Equipment	A piece of utilized transport equipment.
Assoc	0	1	Freight Forwarder	The freight forwarder party.
Assoc	0	unbounded	Grouping Centre	A grouping centre party.
Assoc	0	unbounded	Consignment Item	An included consignment item.
Assoc	0	unbounded	Associated Referenced Document	An associated referenced document, such as the certificate of origin or phyto certificate.
Assoc	0	1	Applicable Transport Cargo Insurance	The applicable transport cargo insurance.
Assoc	0	1	Applicable Cross-Border Customs Valuation	The applicable cross-border customs valuation.
Assoc	0	unbounded	Applicable Cross-Border Regulatory Procedure	A applicable cross-border regulatory procedure.
Assoc	0	1	Transit Location	The transit location.
Assoc	0	1	Consignee Internal Destination Location	The consignee logistics location from which this supply chain consignment internally is destined.
Entity			Document Authentication	A proof that a document is genuine.
Att	0	unbounded	ID	An identifier.
Att	0	1	Type Code	The type of document.
Att	0	1	Actual Date Time	The actual date.
Att	0	unbounded	Information	Information about this document.
Att	0	1	Representation Type Code	The representation type code, such as direct or indirect.
Att	0	1	Statement	The statement (in text).
Att	0	1	Statement Code	The statement code.
Att	0	1	Transport Means ID	The transport means identifier for this document.
Assoc	0	1	Issue Location	The referenced issue location.
Assoc	0	1	Location Provider	The referenced location provider party.

Receiving Advice				
Assoc	0	1	Provider	The referenced provider party.
Entity			Document Line	A document line for a receiving advice line.
Att	1	1	ID	The identifier.
Att	0	1	Status Code	The status code.
Att	0	1	Status Reason Code	The line status reason code.
Assoc	0	unbounded	Note	An included note.
Entity			Logistics Package	A self-contained wrapping or container within which goods are contained, for this receiving advice line.
Att	0	1	ID	The identifier.
Att	0	1	Global ID	The global identifier.
Att	0	1	Parent ID	The parent identifier..
Att	0	1	Type Code	The type code
Att	0	1	Type Text	The type (in text).
Att	0	1	Level Code	The package level code.
Att	0	1	Description	The description.
Att	0	1	Gross Volume	The gross volume.
Att	0	1	Gross Weight	The gross weight (mass).
Att	0	unbounded	Information	Information.
Att	0	1	Item Quantity	The number of logistics package at item level.
Att	0	1	Net Weight	The net weight (mass).
Att	0	1	Nominal Gross Volume	The nominal gross volume.
Att	0	1	Nominal Gross Weight	The nominal gross weight (mass).
Att	0	1	Per Package Unit Quantity	The number of units per package.
Att	0	1	Sequence Number	The sequence number.
Att	0	1	Series End ID	The identifier of the end of a series of packages within this logistics package.
Att	0	1	Series Start ID	The identifier of the start of a series of packages within this logistics package.
Assoc	0	unbounded	Shipping Marks	Physical shipping marks and barcode information.
Assoc	0	unbounded	Included Trade Line Item	A supply chain trade line item included in this logistics package.
Assoc	0	1	Linear Spatial Dimension	The linear spatial dimensions.
Assoc	0	unbounded	Used Supply Chain Packaging	Supply chain packaging used for this logistics package.
Assoc	0	unbounded	Despatch Note Associated Document	A despatch note associated with this logistics package.

Receiving Advice				
Assoc	0	unbounded	Returnable Asset Instructions	Returnable asset instructions.
			Logistics Transport Equipment	A piece of equipment used to hold, protect or secure cargo for logistics purposes.
Att	0	1	Size/Type Code	The code specifying the characteristic or characteristics of this piece of transport equipment, such as the ISO 6346 transport equipment size and type code.
			Logistics Transport Means	A piece of equipment used to hold, protect or secure cargo for logistics purposes.
Att	0	1	Type Code	The code specifying the type of logistics means of transport (Reference UNECE Recommendation 28).
Entity			Logistics Transport Movement	The conveyance (physical carriage) of goods or other objects used for logistics transport purposes.
Att	0	1	Stage Code	The code specifying the stage of this logistics transport movement.
Att	0	1	Mode Code	The code specifying the mode, such as by air, sea, rail, road or inland waterway, for this logistics transport movement.
Att	0	1	Mode Text	The mode, expressed as text, of this logistics transport movement.
Att	0	1	Transit Direction Code	The code specifying the transit direction of this logistics transport movement.
Entity			Product	Any tangible output or service produced by human or mechanical effort or by a natural process for Cross Industry (CI) trade purposes.
Att	0	1	ID	The identifier.
Att	0	1	Global ID	The global identifier.
Att	0	1	Seller Assigned ID	The seller assigned identifier.
Att	0	1	Buyer Assigned ID	The buyer assigned identifier.
Att	0	1	Manufacturer Assigned ID	The manufacturer assigned identifier.

Receiving Advice				
Att	0	1	Ultimate Customer Assigned ID	The ultimate customer assigned identifier.
Att	0	unbounded	Additional ID	An additional identifier.
Att	0	unbounded	Name	A name.
Att	0	1	Trade Name	The trade name.
Att	0	unbounded	Description	A description.
Att	0	1	Degree Of Product Change	The degree of product change, such as technical change.
Att	0	1	Type Code	The type code.
Att	0	1	Net Weight	The net weight (mass).
Att	0	1	Gross Weight	The gross weight (mass).
Att	0	1	Drained Net Weight	The drained net weight (mass).
Att	0	1	Brand Name	The brand name.
Att	0	1	Sub-Brand Name	The sub-brand name.
Att	0	unbounded	Product GroupID	An product group identifier.
Att	0	1	Area Density	The area density, such as paper density in grams per square metre (gsm).
Att	0	1	Colour Code	The colour code.
Att	0	unbounded	Colour Description	A description of the colour.
Att	0	unbounded	Use Description	A description of a use.
Att	0	unbounded	Designation	A designation.
Att	0	unbounded	End Item Name	An end item name.
Att	0	1	Latest Product Data Change Date Time	The date of the latest change in the product data.
Att	0	unbounded	End Item Type Code	A code specifying a type of end item.
Att	0	1	Variable Measure Indicator	The indication that instances of the product have a variable measure, such as weight, length or volume.
Att	0	unbounded	Additional Description	An additional description.
Att	0	unbounded	Batch ID	A batch identifier.
Att	0	unbounded	Common Name	A common name.
Att	0	unbounded	Concise Description	A concise description.
Att	0	1	Configurable Indicator	The indication that the product is configurable.
Att	0	1	Content Unit Quantity	The number of content units.
Att	0	unbounded	Customer Assigned ID	A customer assigned identifier.
Att	0	unbounded	Gross Volume	A gross volume.
Att	0	unbounded	Industry Assigned ID	An industry assigned identifier.
Att	0	unbounded	Model ID	A model identifier.
Att	0	unbounded	Net Volume	A net volume.
Att	0	1	Recycling Type Code	The recycling code.
Att	0	unbounded	Status Code	A status code.

Receiving Advice				
Att	0	unbounded	Unit Type Code	A unit type code.
Assoc	0	unbounded	Applicable Product Characteristic	A product characteristic.
Assoc	0	unbounded	Applicable Material Goods Characteristic	A material goods characteristic.
Assoc	0	unbounded	Designated Product Classification	A designated product classification.
Assoc	0	unbounded	Individual Trade Product Instance	An individual instance.
Assoc	0	unbounded	Certification Evidence Reference	A referenced certification evidence document.
Assoc	0	unbounded	Inspection Reference	A referenced inspection document.
Assoc	0	1	Origin Trade Country	The country of origin.
Assoc	0	1	Linear Spatial Dimension	Linear spatial dimensions.
Assoc	0	1	Minimum Linear Spatial Dimension	Minimum linear spatial dimensions.
Assoc	0	1	Maximum Linear Spatial Dimension	Maximum linear spatial dimensions.
Assoc	0	1	Manufacturer Party	The party who is the manufacturer.
Assoc	0	1	MSDS Reference	The referenced Material Safety Data Sheet (MSDS) document.
Assoc	0	unbounded	Additional Reference	An additional referenced document.
Assoc	0	unbounded	Information	An information note.
Assoc	0	1	Brand Owner Party	The party that owns the brand.
Assoc	0	1	Legal Rights Owner Party	The party that owns the legal rights.
Assoc	0	unbounded	Presentation Specified Binary File	A binary presentation file.
Assoc	0	unbounded	Buyer Supplied Parts Reference Document	A buyer referenced supplied parts document.
Entity			Product Warranty	An undertaking as to the quality of a product including responsibility for replacement or repair over a specified period.
Att	0	unbounded	Description	A description.
Assoc	0	1	Validity Period	The period within which this product warranty is valid.
Entity			Referenced Location	A reference to a physical location or place.
Att	0	1	ID	The identifier, such as a United Nations Blue Number (UNBN) or GS1 Global Location Number (GLN).
Att	0	unbounded	Name	A name.

Receiving Advice				
Entity			Referenced Package	A self-contained wrapping or container within which goods are contained, for this receiving advice line.
Att	0	1	ID	The identifier.
Att	0	1	Global ID	The global identifier.
Att	0	1	Parent ID	The parent identifier..
Att	0	1	Type Code	The type code
Att	0	1	Type Text	The type (in text).
Att	0	1	Level Code	The package level code.
Att	0	1	Description	The description.
Att	0	1	Gross Volume	The gross volume.
Att	0	1	Gross Weight	The gross weight (mass).
Att	0	unbounded	Information	Information.
Att	0	1	Item Quantity	The number of logistics package at item level.
Att	0	1	Net Weight	The net weight (mass).
Att	0	1	Nominal Gross Volume	The nominal gross volume.
Att	0	1	Nominal Gross Weight	The nominal gross weight (mass).
Att	0	1	Per Package Unit Quantity	The number of units per package.
Att	0	1	Sequence Number	The sequence number.
Att	0	1	Series End ID	The identifier of the end of a series of packages within this logistics package.
Att	0	1	Series Start ID	The identifier of the start of a series of packages within this logistics package.
Entity			Referenced Party	A reference to an individual, a group, or a body having a role in a business function.
Att	0	1	ID	The identifier.
Att	0	1	Name	The name.
Att	0	unbounded	Type Code	A type of party that is independent of its role.
Att	0	1	Role Code	The role code.
Assoc	0	unbounded	Defined Contact	A referenced defined contact.
Assoc	0	1	Authoritative Signatory Person	The authoritative signatory person.
Assoc	0	1	Unstructured Address	The unstructured address for this referenced party.
Entity			Supply Chain Packaging	Any material with which supply chain goods are packaged, such as a box or bubble wrap.
Att	0	1	Type Code	The code specifying the type of packaging.
Att	0	1	Type Text	The type of packaging.

Receiving Advice				
Att	0	unbounded	Description	A description.
Att	0	unbounded	Condition Code	A code specifying the condition .
Att	0	unbounded	Disposal Method Code	A code specifying the disposal method .
Att	0	1	Capacity Measure	The measure of the capacity .
Att	0	unbounded	Weight	A measure of the weight .
Att	0	unbounded	Instruction Code	A code specifying an instruction.
Att	0	1	Level Code	The code specifying a level of packaging.
Att	0	1	Sequence Number	The number of a sequence of the packaging.
Att	0	1	Maximum Stackability Quantity	The number of packaging units which can be stacked on top of each other.
Att	0	1	Maximum Stackability Weight	The measure of the maximum stackability weight.
Att	0	1	Returnable Indicator	The indication that the packaging is returnable.
Att	0	1	Customer Facing Total Unit Quantity	The number of units facing the customer, such as placed on a retail shelf.
Att	0	unbounded	Total Unit Quantity	A number of units contained in this packaging.
Att	0	1	Layer Total Unit Quantity	The number of units in a layer.
Att	0	1	Content Layer Quantity	The number of content layers that are or may be packaged with this packaging, such as the number of layers of product on a pallet.
Att	0	unbounded	Additional Instruction Code	A code specifying an additional instruction.
Att	0	1	Additional Instruction Indicator	The indication that there is an additional instruction.
Assoc	0	1	Dimensions	The linear spatial dimensions .
Assoc	0	1	Minimum Dimensions	The minimum linear spatial dimensions.
Assoc	0	1	Maximum Dimensions	The maximum linear spatial dimensions.
Assoc	0	unbounded	Marking	A marking specified for this packaging, such as an inscription, stamp or label to indicate date etc.
Assoc	0	unbounded	Goods Characteristic	Material goods characteristic applicable to this packaging.
Assoc	0	unbounded	Disposal Instructions	Disposal instructions.

Receiving Advice				
Assoc	0	unbounded	Returnable Asset Instructions	Returnable asset instructions.
Entity			Unstructured Address	The location, using an unstructured address format, at which a particular organization or person may be found or reached.
Att	0	1	ID	The identifier.
Att	0	1	Postcode	The postcode.
Att	0	1	Line One	The first free form line.
Att	0	1	Line Two	The second free form line.
Att	0	1	Line Three	The third free form line.
Att	0	1	Line Four	The fourth free form line.
Att	0	1	Line Five	The fifth free form line.
Att	0	1	City Name	The name of the city, town or village.
Att	0	1	Country Code	The country identifier (Reference ISO 3166 and UN/ECE Rec 3).
Att	0	1	City Sub-Division Text	The city sub-division name.
Att	0	1	Country Name	The country name.
Att	0	unbounded	Country Sub-Division Name	A country sub-division name.
Att	0	1	Type Code	The type of unstructured address.
Att	0	1	Country Sub-Division Code	The country sub-division identifier.
Att	0	1	City ID	The city identifier, such as a United Nations Location Code (UNLOCODE) or GS1 Global Location Number (GLN).

8.3.3 Business Rules

Not applicable

8.3.4 Definition of Terms

Regarding the Definition of Terms refer to TBG1 Common Supply Chain BRS and published CCL.