

first e-CMR for air-cargo road transport between Luxembourg and Amsterdam Schiphol



Concept of a federated data platform

Seamless data exchange as a key for efficient logistics

Plug and play

register and connect with a solution/service provider of choice

Technology independent infrastructure services

seamless, secure, safe, and compliant trade flows

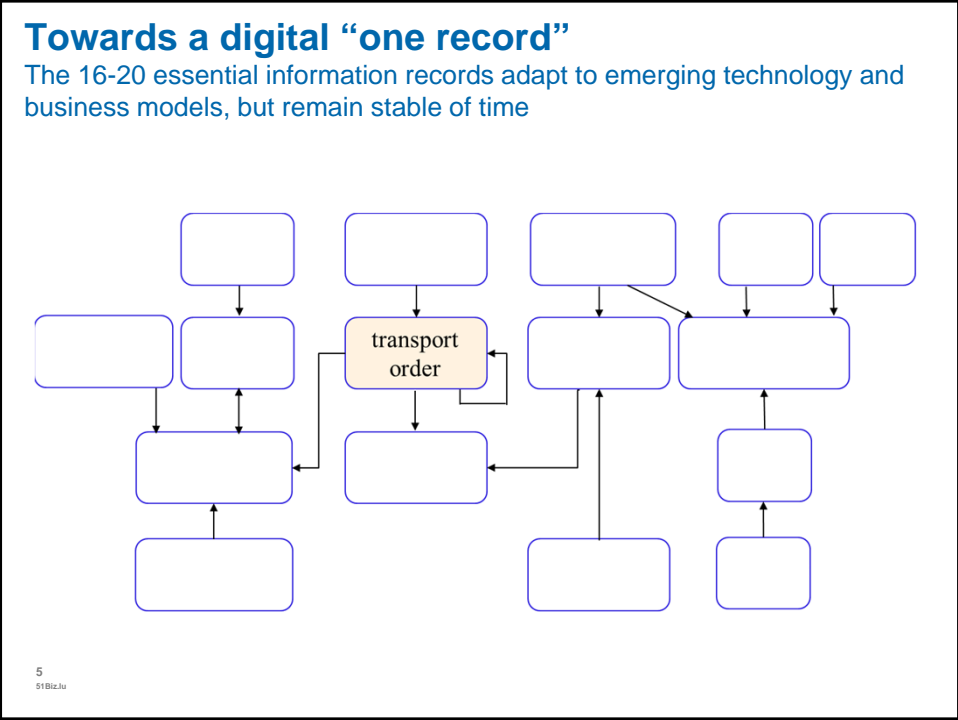
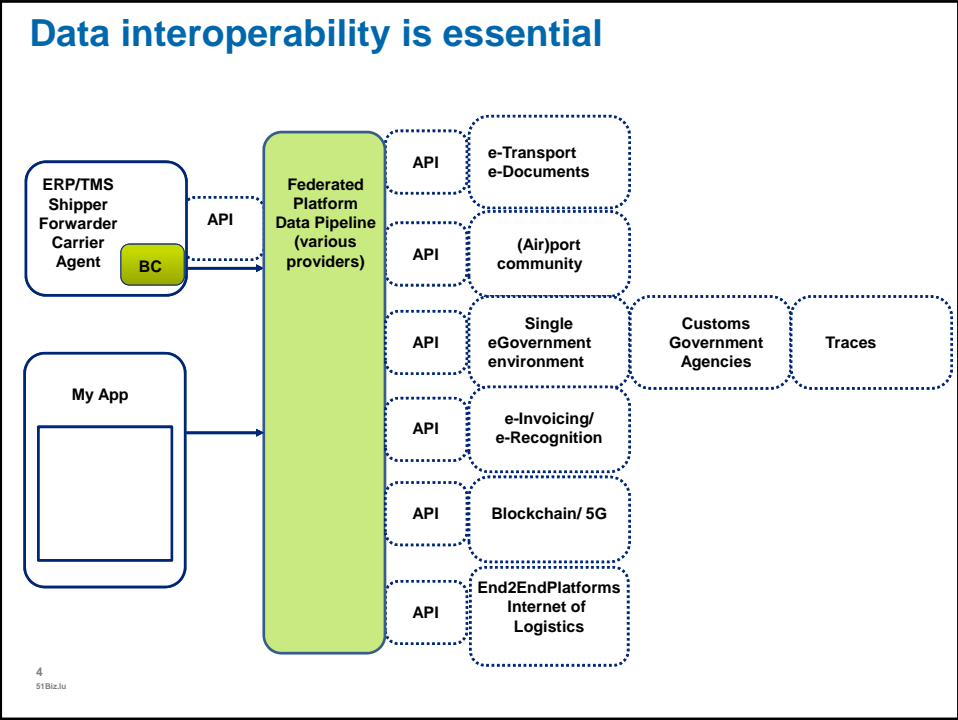
Commodity for data sharing in supply and logistics

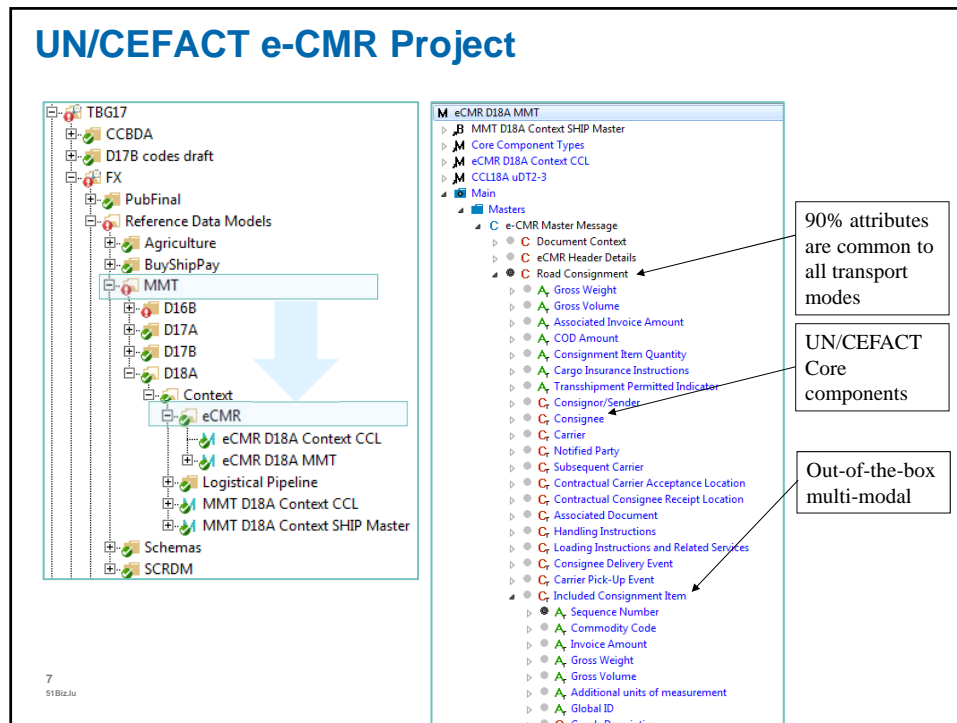
Trusted, safe, and secure

governance rules, certified participants and data governance

Federation: network of platforms and peer-to-peer solutions

Economies of scale and network effects with standardized protocols





UN/CEFACT E-CMR Road Consignment Note

1. Enables data interoperability between shippers, forwarders, carriers and government agencies
2. Multi modal by design from day one
3. Core components internationally harmonized and aligned with WCO, EU Customs data model, IATA-XML and IMO FAL eCompendium
4. Cassandra/CORE information pipeline inside
5. Aligned with Geneva e-CMR 2008 protocol addition
6. Global Standard with UN/CEFACT data governance
7. Developed by team of independent experts

A strategic alliance ?

1. Our “customer”

- CORE, AEOLIX, RIS-COMEX, ALICE, SELIS, ...
- “Digital” is national and EU investment priority
- 400 M e-CMR for EU28 = 1.8 billion EURO per year

2. Transport and Logistics needs global standards

3. Share independent subject matter experts

- European reference model for transport and logistics
- “Yellow Service Catalog” – Event definition, API, JSON definitions must be in scope of UN/CEFACT deliverables
- Interoperability of “meta” structures

4. Short-term

- MMT and e-CMR are not visible in DTLF reports