



**UN/CEFACT**

# **Implementing Technology Solutions with the BCF**

**Klaus-Dieter Naujok**

**UN/CEFACT Techniques & Methodologies Group (TMG) Chair**

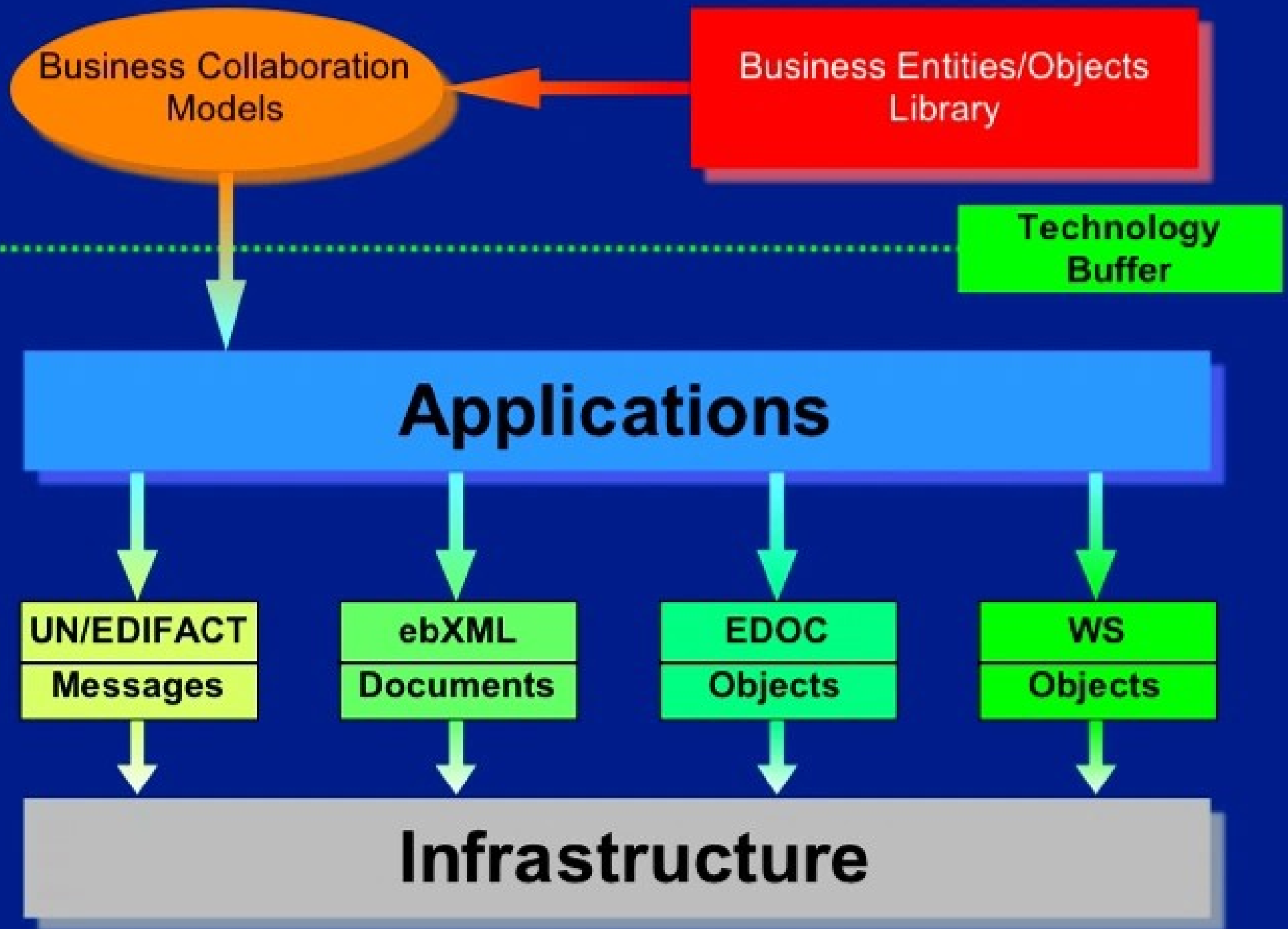
**Founder & Principal Advisor - Global e-Business Advisory Council**

**[klausn@attglobal.net](mailto:klausn@attglobal.net)**

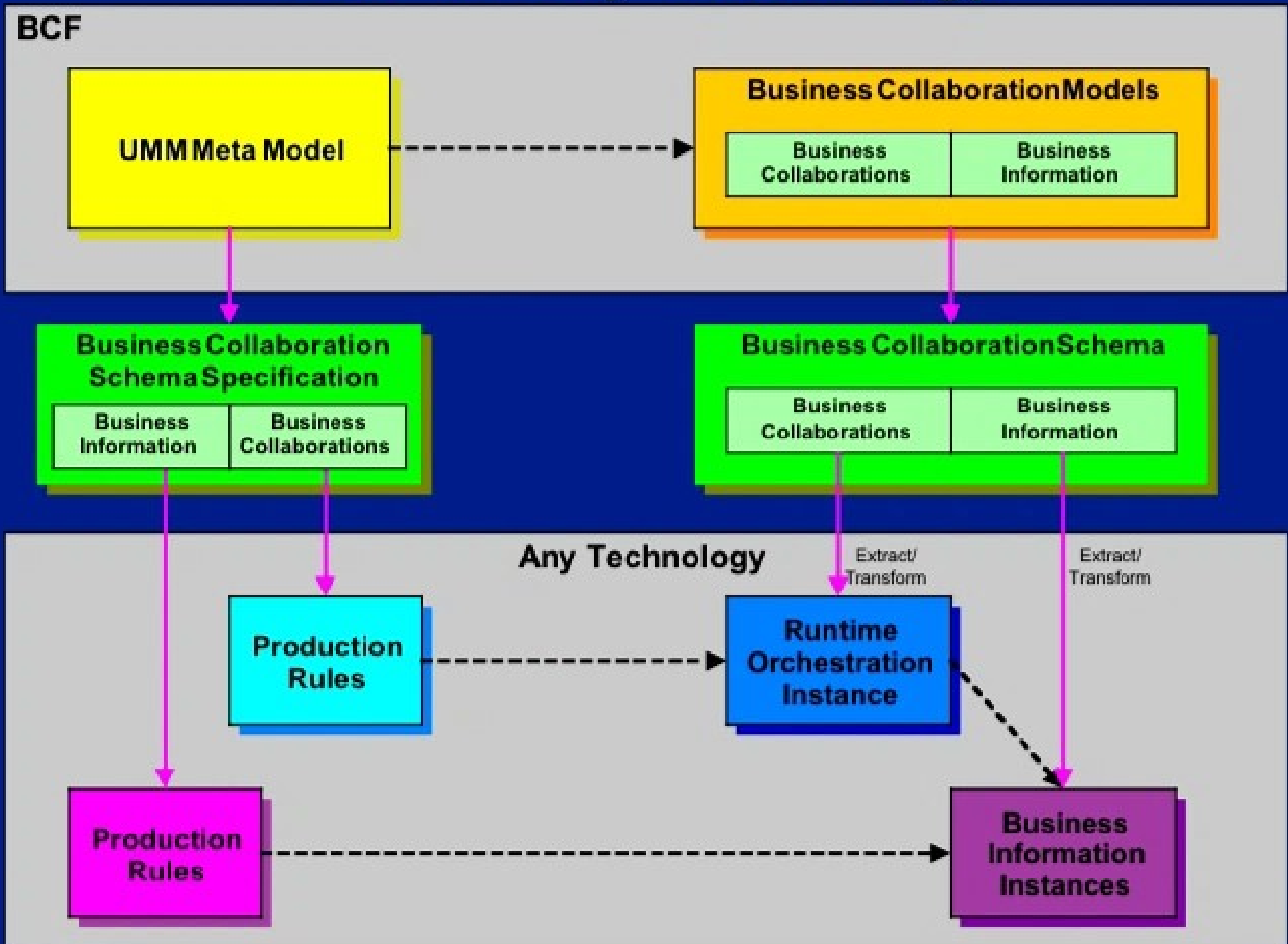
**UNITED NATIONS CENTRE FOR TRADE FACILITATION AND ELECTRONIC BUSINESS**

**Under the auspices of United Nations Economic Commission for Europe**

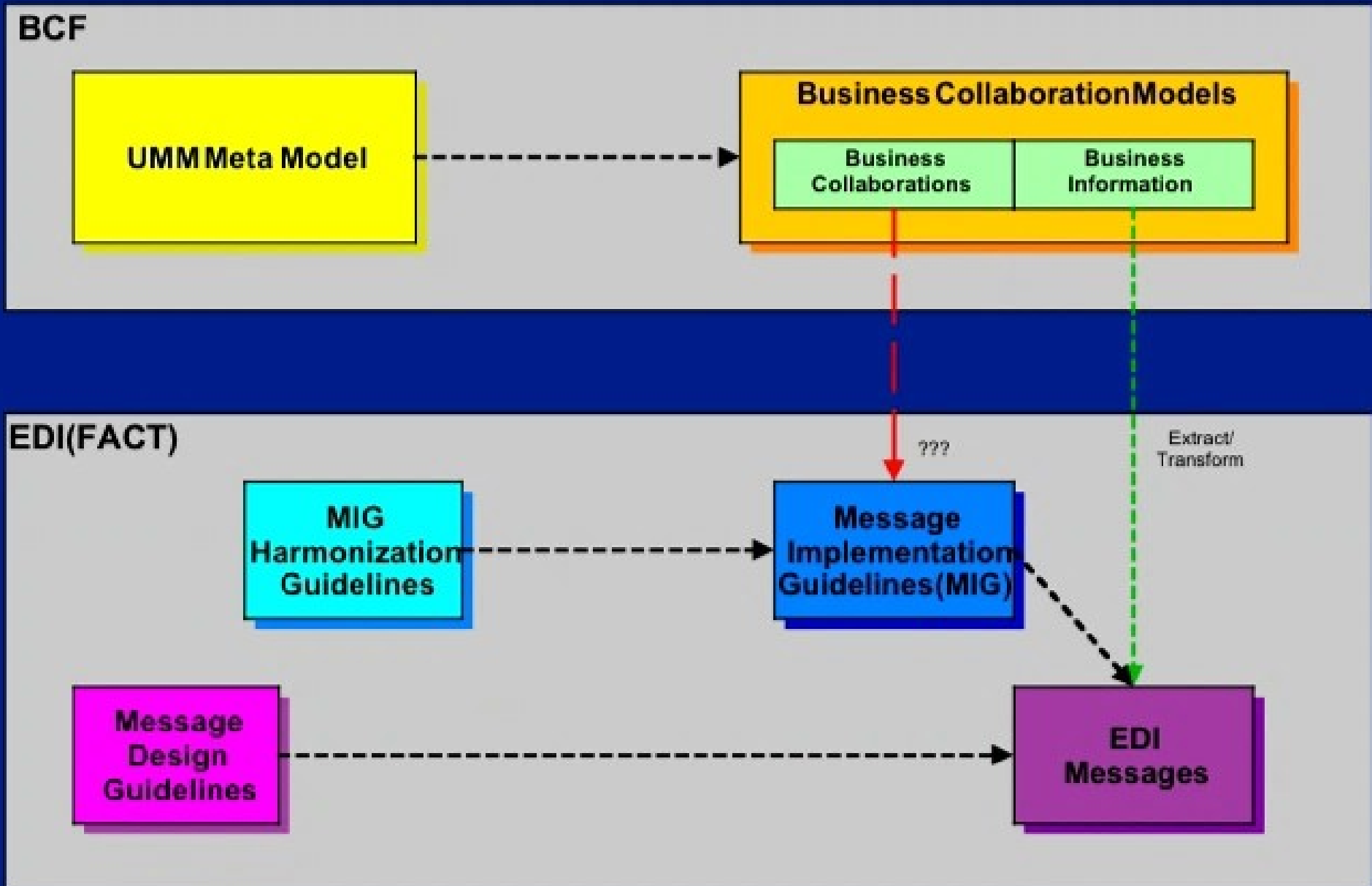
# Implementing different Technologies



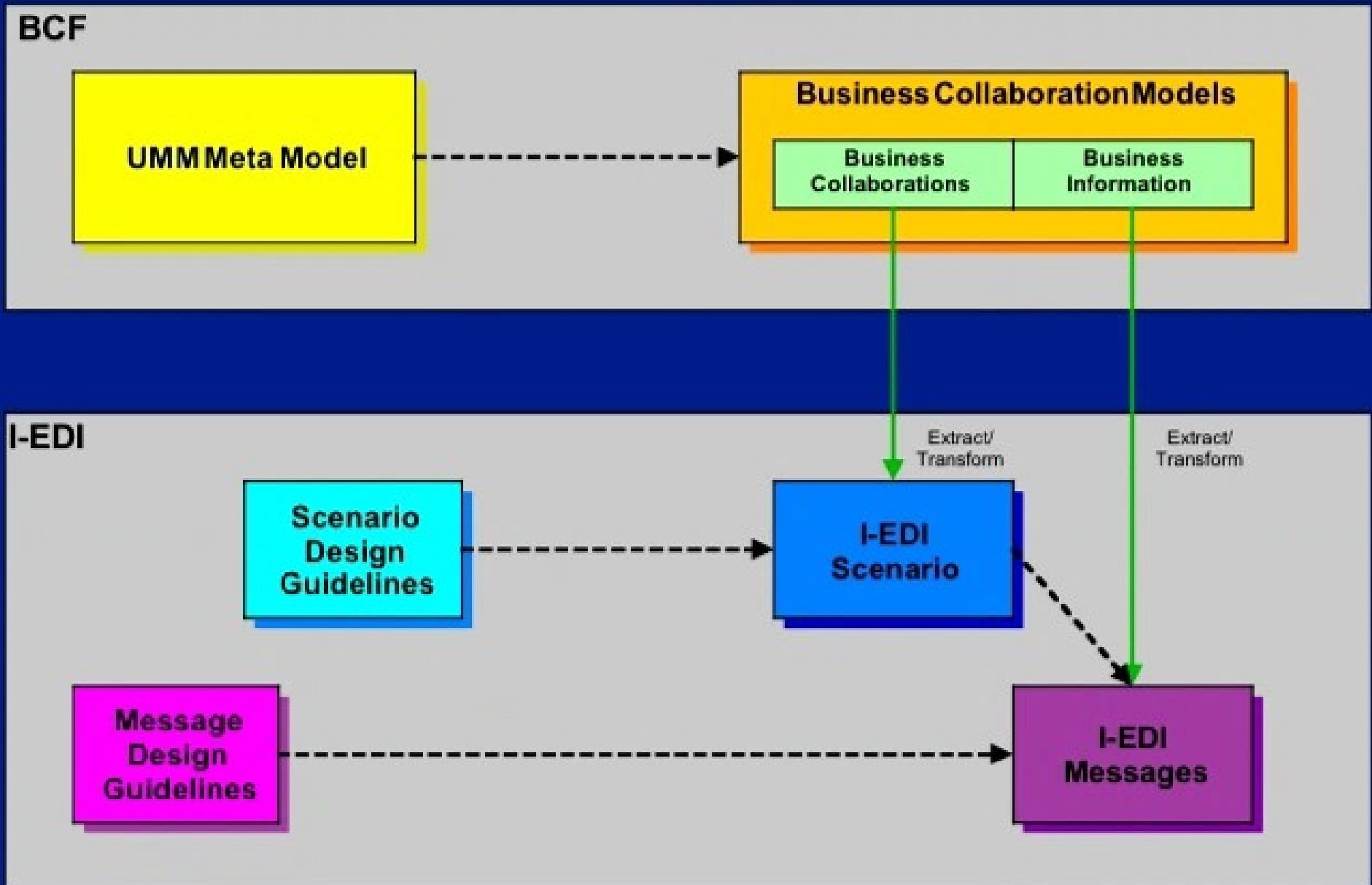
# BCF to "any" Technology



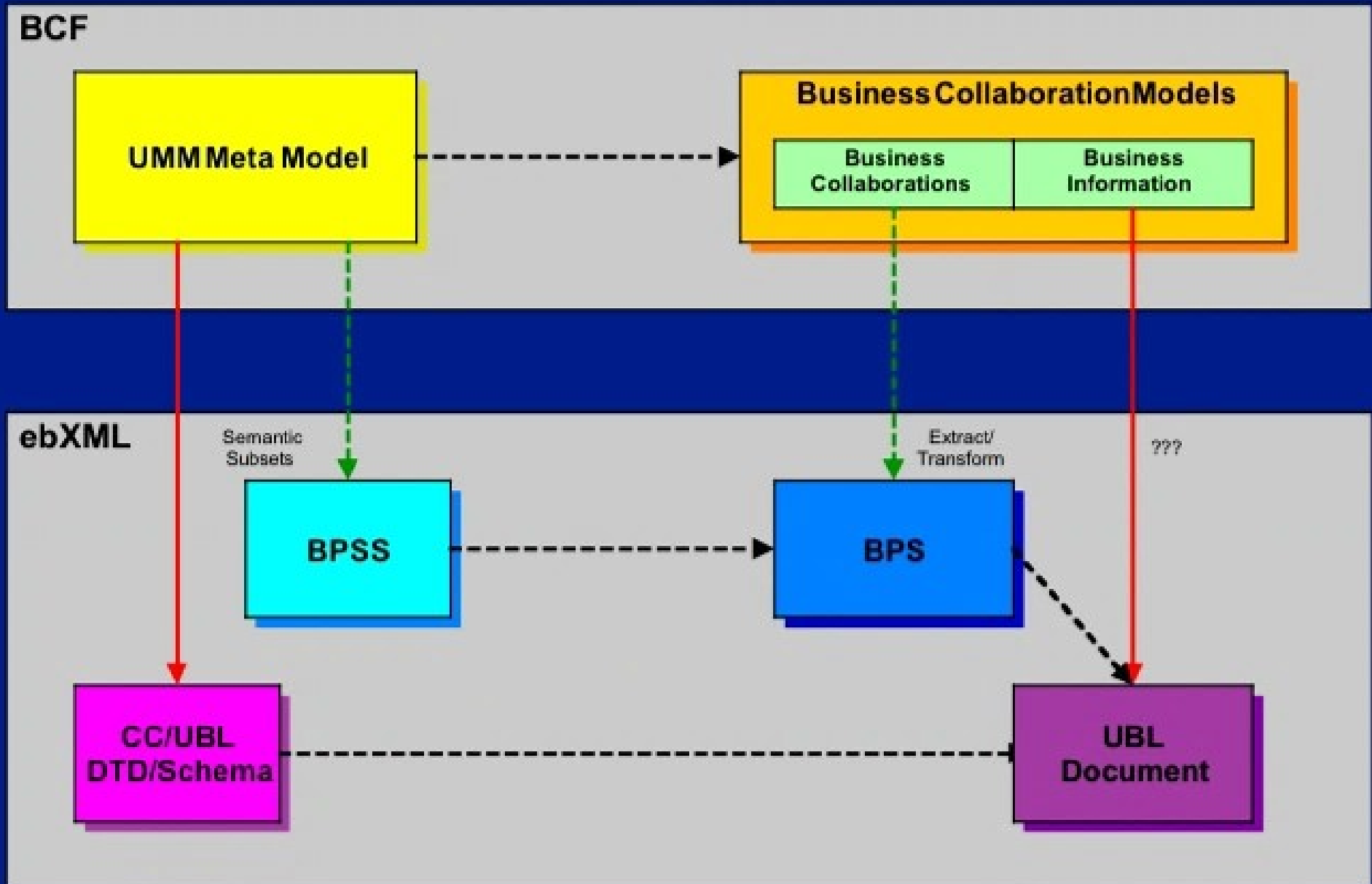
# BCF & EDI(FACT)



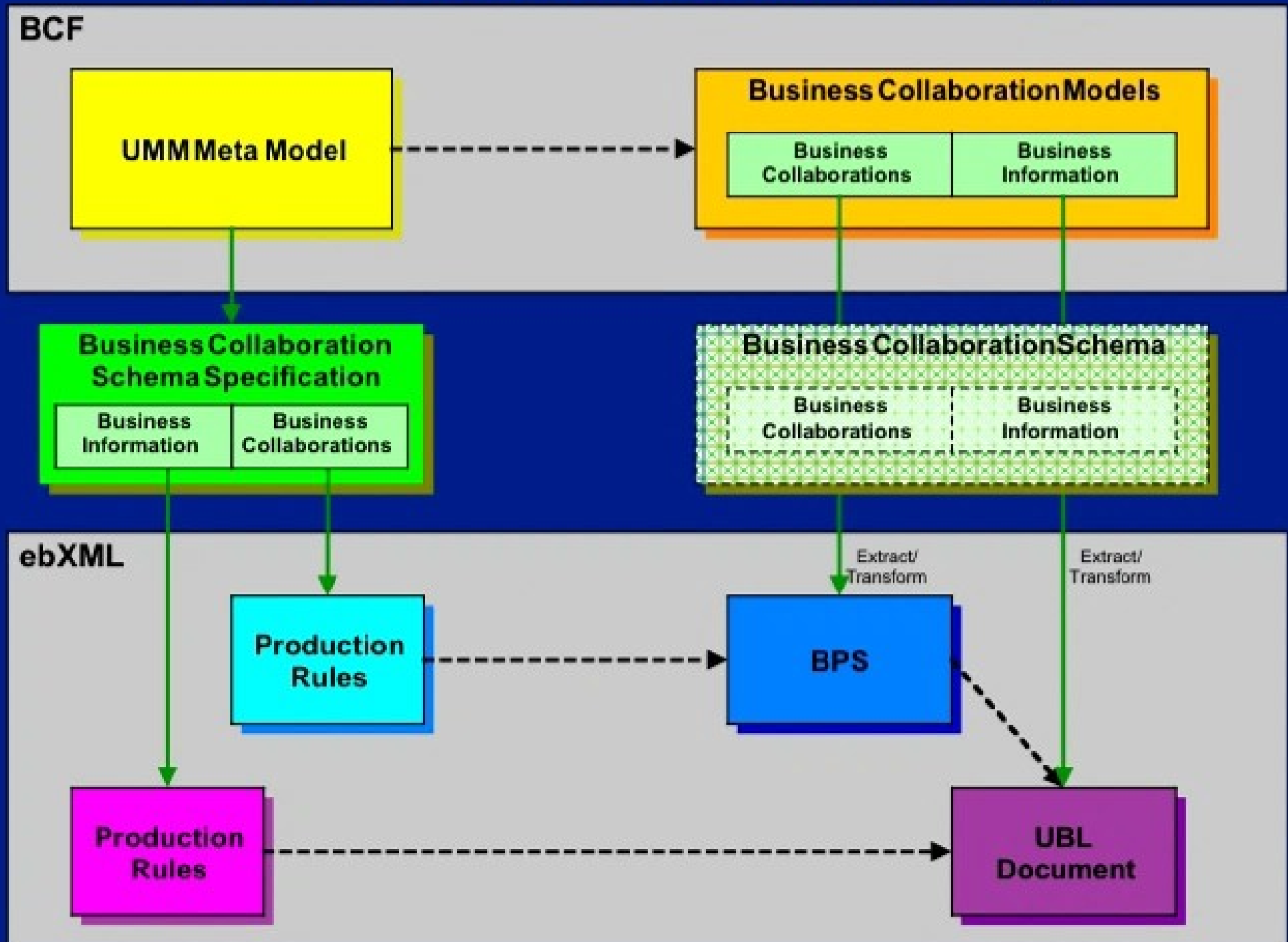
# BCF & I-EDI



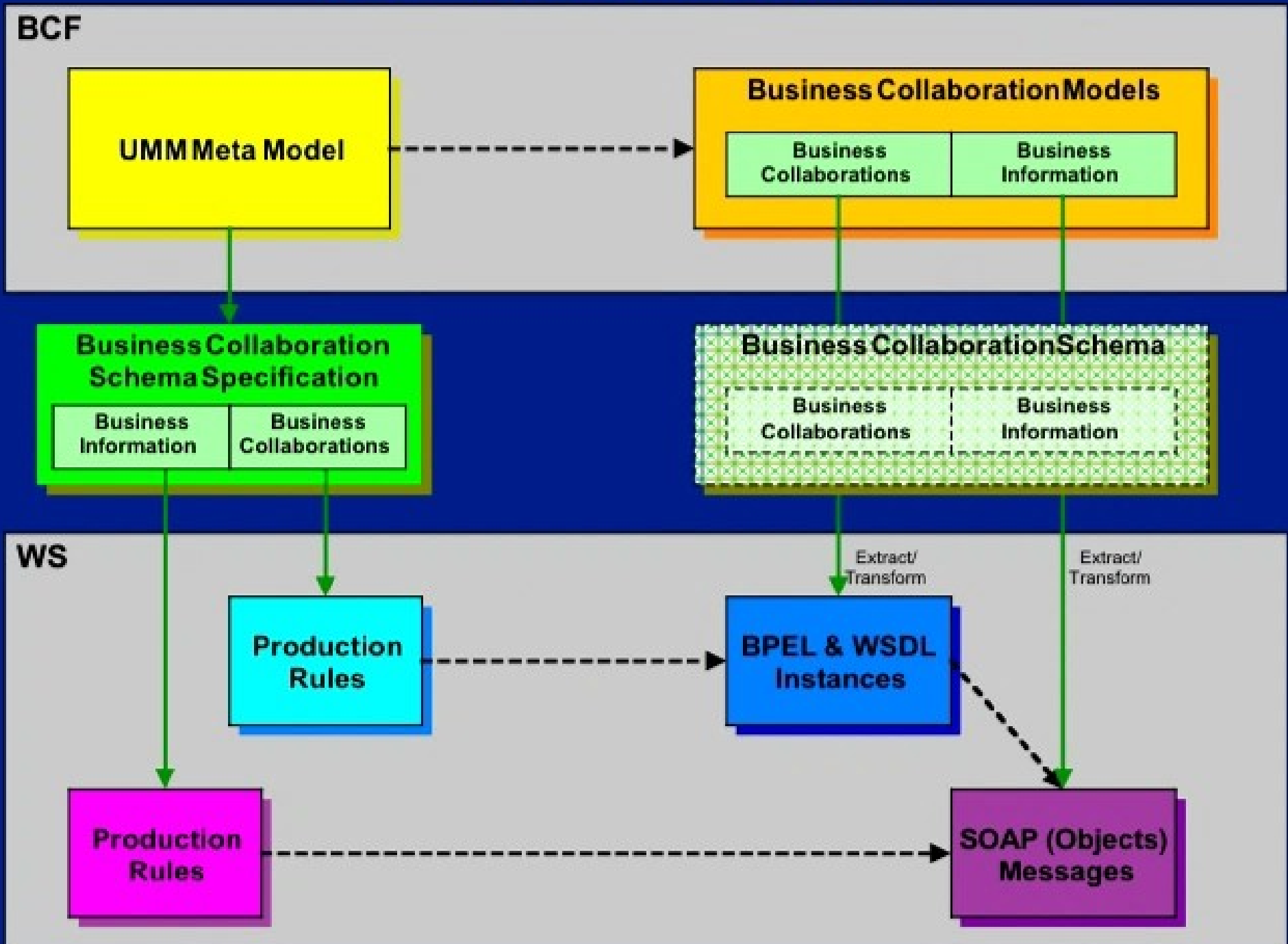
# Current BCF/ebXML relationship



# Future BCF/ebXML relationship?

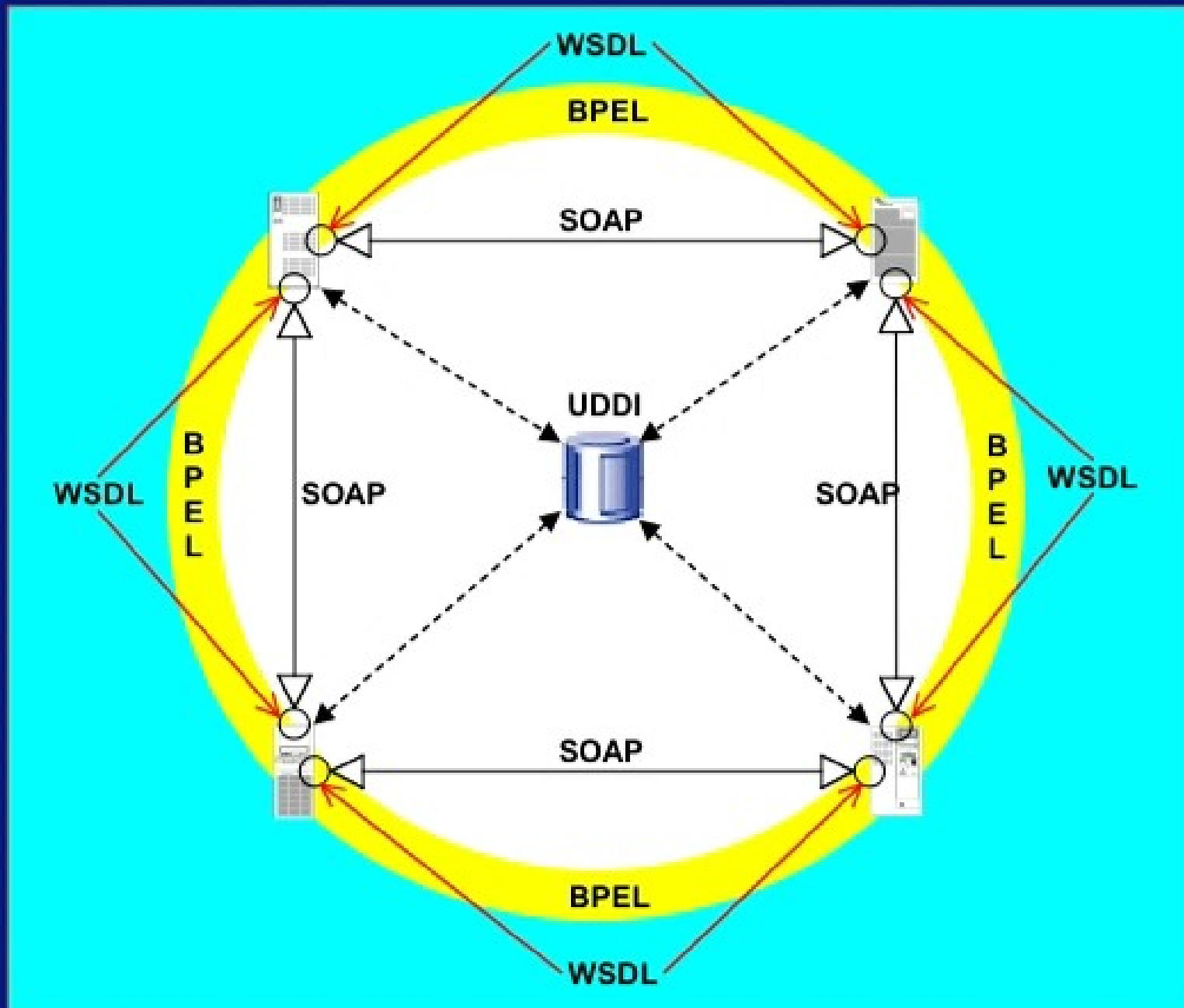


# BCF & Web Services?





# Web Service Standards Overview



# Full Web Service Stack

## Business Collaboration Framework - BCF

(complete business requirements expressed in a BusinessCollaboration Model)

## Business Collaboration Schema - BCS

(implementation neutral syntax specific instance of a BusinessCollaboration Model)

## Business Process Execution Language - BPEL4WS

(business process orchestration for web services)

## WS-Federation

(allows different security realms to federate)

## WS-Trust

(establish technically sound trusted relationships)

### WS-Policy

(policies of a web service)

### WS-Security

(secured messaging)

### WS-Reliable Messaging

(reliable messaging)

### WS-Addressing

(web service end  
point addressing)

### WS-Transaction

(web service transaction)

### WS-Coordination

(web service coordination  
type protocols)

## Schemas

(XSD, WSDL, SOAP)

## Transports

(HTTP, SMTP, UDP, TCP/IP, etc)

# ebXML and Web Service Standards Landscape



|                                   | ebXML 2000   | Current ebXML 2003 | ebXML Goal | WS ala OASIS | WS ala TMG       |
|-----------------------------------|--------------|--------------------|------------|--------------|------------------|
| Composable Services and Processes | BPIM/UMM     | BCF                | BCF        | BCM          | BCF              |
| Service Flow                      | BPSS         | BPSS               | BPSS       | BPEL4WS      | BCSS*<br>BPEL4WS |
| Service Publication and Discovery | Reg/Rep      | Reg/Rep            | UDDI       | UDDI         | WS-F<br>WS-T     |
| Service Description               | CPPA         | CPPA               | CPPA       | WSDL         | WSDL             |
| Messaging                         | ebMS (SOAP+) | ebMS (SOAP+)       | XMLP**     | WS-??        | WS-RM<br>WS-S    |

\*BCSS = Business Collaboration Schema Specification (Technology-neutral using ASN.1)

\*\*XMLP = Alignment of SOAP and ebMS under W3C

WS-?? = Competing efforts to add security and reliability to SOAP due to W3C failure to resolve IP issues around XMLP

| Standards Development Responsibility | OASIS | UN/CEFACT | W3C | WS-I |
|--------------------------------------|-------|-----------|-----|------|
|--------------------------------------|-------|-----------|-----|------|

**BCF enables anyone, anywhere  
to do business with anyone else**



UN/CEFACT



**UN/CEFACT**

SIMPLE, TRANSPARENT AND EFFECTIVE PROCESSES  
FOR GLOBAL BUSINESS