



UNITED NATIONS ECONOMIC COMMISSION FOR EUROPE

UNITED NATIONS CENTRE FOR TRADE FACILITATION
AND ELECTRONIC BUSINESS (UN/CEFACT)

**REQUIREMENTS SPECIFICATION MAPPING
(RSM)**

CCBDA Cross Industry Catalogue Process v2.0

Approved: UN/CEFACT Bureau _____

Version: 2.0

Release: 1

1
2
3
4
5

6
7
8
9
10
11
12
13
14
15
16
17
18
19
20
21
22
23
24
25
26
27
28
29
30
31
32
33
34
35
36
37
38
39
40

41

42

Contributors

Name	Organization
Mary Kay Blantz	
Karina Duvinger	
Gerhard Heemskerk (Lead Editor)	
Colin Laughlan	
Andreas Pelekies	
Sue Probert	
Hisanao Sugamata	
Lance Thompson	
Ian Watt	
Rolf Wessel	

43

44

Public Review

TABLE OF CONTENTS

45		
46	2	INTRODUCTION..... 5
47	2.1	AUDIENCE..... 5
48	2.2	REFERENCE DOCUMENTS 5
49	3	DOCUMENT HISTORY 7
50	3.1	PURPOSE AND SCOPE..... 7
51	3.2	TARGET SOLUTION 7
52	4	BUSINESS REQUIREMENTS SUMMARY 8
53	4.1	BUSINESS PROCESSES, INFORMATION ENVELOPES AND AUTHORISED ROLES..... 8
54	4.2	BUSINESS PARTNER TYPES AND AUTHORISED ROLES 8
55	5	CONCEPTUAL MODEL 9
56	6	INFORMATION MAPPING10
57	6.1	REFERENCED CCL..... 10
58	6.2	BUSINESS INFORMATION ENTITY MODEL 10
59	6.3	NEW AND CHANGED COMPONENTS..... 16
60	6.4	DETAILED CLASS DIAGRAMS..... 16
61	6.6	CORE COMPONENTS MODEL EXTRACT 23
62	6.7	LOGICAL MESSAGE STRUCTURE 23
63	6.7.1	<i>Message Assembly</i> 23
64	8	BUSINESS INFORMATION ENTITIES USED24
65	9	CODE LISTS USED.....86
66	9.1	NEW CODE LIST 86
67	9.2	ADDITIONS TO AN EXISTING CODE LIST 86
68	9.3	USE OR REFERENCE OF AN EXISTING CODE LIST 86
69	9.4	RESTRICTION OF AN EXISTING CODE LIST..... 87
70	10	MESSAGE LIBRARY UPDATE.....88
71	10.1	MESSAGE ASSEMBLY SUBMISSION 88
72	10.2	CORE COMPONENT LIBRARY UPDATE 88
73	10.2.1	<i>Referenced CCL</i> 88
74	10.2.2	<i>CCL Update Submission</i> 88
75	10.3	MODEL EXCHANGE FILE 88
76	10.4	ADDITIONAL INFORMATION..... 88
77	12	DEFINITION OF TERMS89
78		
79	Table 1	Document history 7
80	Table 2	Change log 7
81	Table 3	Business Partner Types and Authorized Roles 8
82	Table 4	Message Assembly Realization Table 23
83	Table 5	BIEs used in Catalogue 25
84	Table 6	Use or Reference of an Existing Code List..... 86
85	Table 7	Recommended code lists 87
86		
87	Figure 1	Cross Industry Catalogue conceptual data model..... 9
88	Figure 2	Exchanged Document, Exchanged Document Context and Document Line Document ... 10
89	Figure 3	Header Trade Agreement..... 11
90	Figure 4	Line Trade Agreement..... 12
91	Figure 5	Line Trade Delivery..... 13
92	Figure 6	Line Trade Settlement 14
93	Figure 7	Trade Product 15
94	Figure 8	Cross Industry Catalogue (root elements) 16
95	Figure 9	Trade Transaction 17
96	Figure 10	Header Trade Agreement..... 18
97	Figure 11	Trade Line Item 19

98	Figure 12 Line Trade Agreement.....	20
99	Figure 13 Line Trade Delivery.....	21
100	Figure 14 Line Trade Settlement	22
101		
102		

Public Review

103 2 Introduction

104 The current practice of exchanging business documents by means of telecommunications – usually
105 defined as e-Business – presents a major opportunity to improve the competitiveness of companies,
106 especially for Small and Medium Enterprises (SME).

107 The catalogue is an important document exchanged between trading partners, it marks the start of the
108 trading cycle.

109 The developing of the Cross Industry Catalogue started as an initiative by CEN/ISSS Workshop eBES,
110 the European Expert Group 1 (EEG1) – Supply Chain & e-Procurement.

111 The document describe globally consistent catalogue information exchange processes for worldwide
112 supply chains and e-Procurement of commodities, using the UN/CEFACT Modelling Methodology
113 (UMM) approach and Unified Modelling Language to describe the business processes and business
114 documents involved.

115 The structure of this document is based on the structure of the UN/CEFACT Business Requirements
116 Specification (BRS) document reference CEFACT/ICG/005.

117 Version 1.0.4 of the BRS was taken as the basis to develop the CCBDA Requirements Specification
118 Mapping (RSM) version 1.

119 The structure of this document is based on the structure of the UN/CEFACT Requirements Specification
120 Mapping (RSM) – Documentation Template Guidelines.

121

122 2.1 Audience

123 The main audiences for this document are the potential authors of individual RSMs. These are
124 primarily the UN/CEFACT business and IT experts who are responsible for specifying the business
125 requirements for e-business solutions in a specific domain and for furthering the development of
126 solutions as relevant standards. Authors may include other standards bodies or users and
127 developers in developed or developing economies.

128

129 2.2 Reference Documents

130 Knowledge and application of the following standards is crucial to the development of quality
131 business requirements specifications. Other key references are shown in the appropriate part of
132 the document.

133

- 134 - UN/CEFACT. Techniques and Methodologies Group (TMG). UN/CEFACT's Modelling
135 Methodology (UMM): UMM Meta Model Core Module. (Candidate for 2.0). 2009-01-30.

136

137 Formal definitions of many of the technical terms used in this RSM guideline may be found in
138 the above references but for convenience some key definitions are included in Annex 1 of
139 this document.

140

- 141 - UN/CEFACT Core Components Technical Specification – Part 8 of the ebXML Framework dated
142 15 November 2003 Version 2.01 - (CCTS 2.01)
- 143 - UN/CEFACT – Core Component Technical Specification *Technical Corrigendum* Version 2.01
144 (Corr. 1) dated 12 February 2007 (CCTS 2.01 Corr.1)
- 145 - UN/CEFACT Core Components Data Type Catalogue Version 2.1 dated 2008-04-08 (CCDTC
146 2.1)
- 147 - UN/CEFACT XML Naming and Design Rules Version 2.0, dated 17 February 2006 (NDR 2)
- 148 - UN/CEFACT UML Profile for Core Components (UPCC), Version 1.0, Final Specification, 2008-
149 01-16
- 150 - UN/CEFACT Core Components Business Document Assembly Technical Specification
151 (CCBDA) version 1.0
- 152 - UN/CEFACT Business Requirement Specification Cross Industry Catalogue Process Version
153 1.0.4.
- 154 - UN/CEFACT Business Requirement Specification Supply Chain Reference Data Model
155 (SCRDM) Version 1.0.0.2.
- 156 - UN/CEFACT Requirement Mapping Specification Supply Chain Reference Data Model
157 (SCRDM) Version 1.0.0.2.

158

159
160
161
162
163

In this document the set of CCTS 2.01 / CCTS 2.01 Corr.1 / NDR 2 / CCDTC 2.1 specifications are referred to as "UN/CEFACT Technical Specifications Version 2"..

Public Review

164 3 Document History

165

166 Table 1 Document history

167

Phase	Status	Date Last Modified
ODP 3	Draft Development	15-06-2017
ODP 4	Public Review	17-07-2017
ODP 5	Publication	

168

169 Table 2 Change log

170

Date of Change	Version	Paragraph Changed	Summary of Changes	Author
05-2004	1.0		Initial version of CIC (Cross Industry Catalogue) – document-centric	UN/CEFACT TBG1
15-06-2017	2.0		Concept SCRDM CCBDA CIC (Cross Industry Catalogue)	Gerhard Heemskerk (Lead Editor)

171

172 3.1 Purpose and Scope

173

174

175

176

177

178

179

180

181

182

183

184 3.2 Target Solution

185

186

187

188

This project aims to standardize the business process and information entities of cross-industrial electronic cataloguing. In various industries all over the world, there are all sorts of cataloguing actions being performed. With the explosive spread of the Internet and the rapid growth of information technology, cataloguing activity is being performed electronically through the Internet as well as other business activities. With the realization of electronic cataloguing through the Internet and spreading practice of international electronic cataloguing, the needs for international standardization are thought to increase. According to such trends, the goal of this project is to make the business process and information entities within cataloguing activities standard.

The target solution is an implementation using XML schema based on the following UN/CEFACT specifications: CCTS 2.01, NDR 2.1, CCBDA 1.0 and the UN/CEFACT standard Supply Chain Reference Data Model.

189 4 Business Requirements Summary

190 In conjunction with the BRS document (UN/CEFACT Business Requirement Specification Cross
191 Industry Catalogue Process Version 1.00), the purpose of this document is to provide a standard
192 framework for the exchange of information.

193

194 4.1 Business Processes, Information Envelopes and Authorised Roles

195 The BRS Cross Industry Catalogue defines the following processes:

- 196 - Requesting a subscription
- 197 - Request a catalogue
- 198 - Providing a catalogue
- 199 - Requesting a catalogue Update
- 200 - Providing a catalogue Update

201

202 4.2 Business Partner Types and Authorised Roles

- 203 - Catalogue Information Receiver
- 204 - Catalogue Information Provider

205

206 **Table 3 Business Partner Types and Authorized Roles**

207

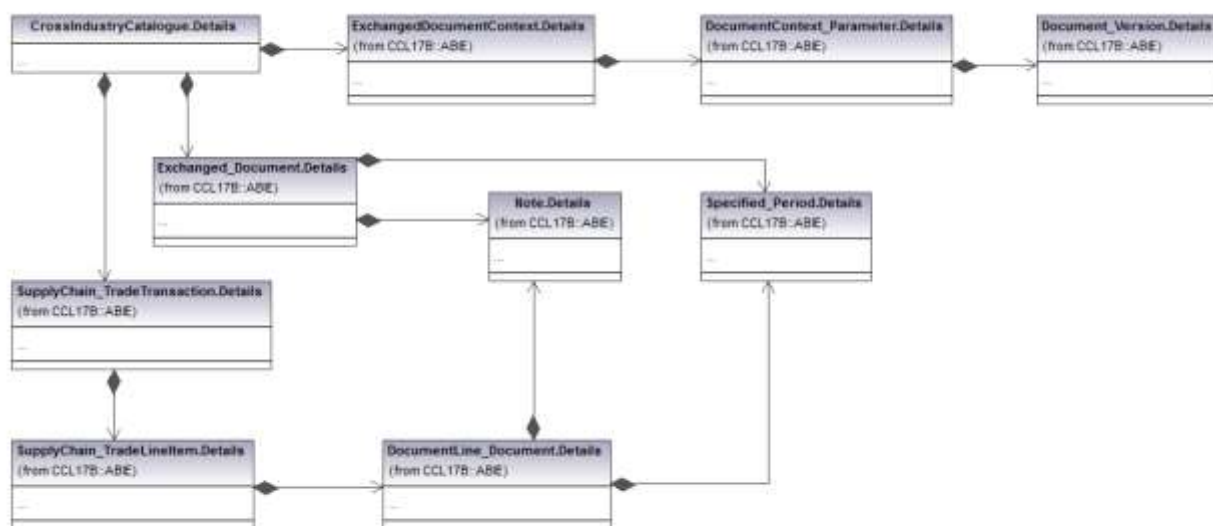
Authorised Role Name	Business Partner Type Name
Catalogue information provider	Supplier Organization
Catalogue Information Receiver	Customer Organization

208

209 5 Conceptual Model

210 The conceptual model identifies the main Entity Classes. The following model is shown in the form
211 of class diagram.

212 **Figure 1 Cross Industry Catalogue conceptual data model**



213

214

214 **Philosophy behind the conceptual design**

215

216 The conceptual design is based on the assumption that information exchanged in the order-to-pay
217 (including the establishing of business agreements) process tends to have a large degree of
218 similarity. Therefore rather than linking the information to message specific entities three neutral
219 entities have been defined: Trade Agreement, Trade Delivery and Trade Settlement. These entities
220 contain the main semantic payload for all communication exchanges, on header as well as on line
221 level. on line level.

221

222 A fourth essential entity is the Trade Product entity. This entity holds all characteristics of the trade
223 product that are independent of a particular trade transaction. The Trade Transaction and Trade Line
224 Item entities serve to structure the entities mentioned before.

224

225

Description of the main entities

226

226 **Header section of a catalogue**

227

- 228 • Exchanged Document Context: Application processing information for the business document.
- 229 • Exchanged Document: Generic document heading information such as catalogue number,
230 Issue date.
- 231 • Trade Transaction: Information on the trade transaction(s) to which the catalogue applies.
- 232 • Trade Agreement: information on the commercial agreement on which the catalogue trade
233 transaction is based.

233

233 **Line section of a catalogue.**

234

- 235 • Document Line Details: Information on document line level such as line number.
- 236 • Trade_Product Group: Information on grouping of trade line items.
- 237 • Trade Line Item: Information on catalogue items.
- 238 • Trade Agreement: information on the commercial agreement on which the catalogue and
239 trade transaction or catalogue line is based.
- 240 • Trade Delivery: information on the fulfillment of trade deliveries such as handling instructions.
- 241 • Trade Settlement: information on fulfillment of the financial settlements for a catalogue item
242 such as tax information.
- 243 • Trade Product: Information on the product that is included in the catalogue.
- 244 • Product Instance: Information on the individual instances (objects) of a product.

245 6 Information Mapping

246 6.1 Referenced CCL

247 CCL17B

248 **Remark:** Additions or changes to this CCL are included later in this section. During the harmonization
 249 process the change requests will be considered against the whole CCL and may lead to suggestions
 250 for the re-use or modification of existing core components.

251

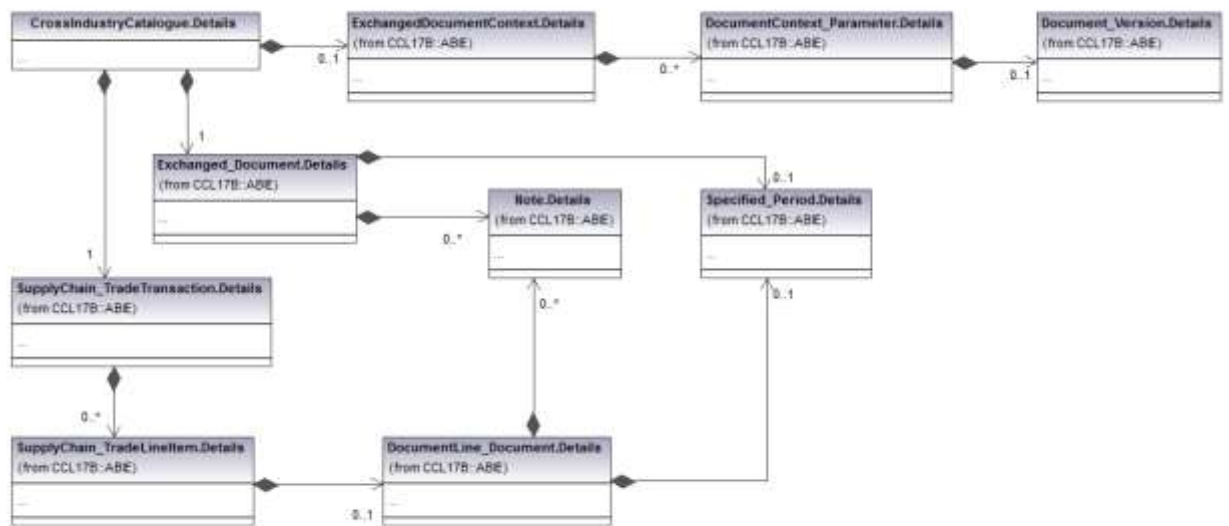
252 6.2 Business Information Entity Model

253 For readability reasons the canonical model is provided in multiple diagrams, each providing a full
 254 description of a segment in the Cross Industry Catalogue. The three entities Trade Agreement, Trade
 255 Delivery and Trade Settlement support the entire Order-to-Pay process. In the individual steps of the
 256 process, such as the Catalogue, further refinements can be made on what is communicated on
 257 header and line level. Therefore in the canonical model for the Catalogue message the Trade
 258 Agreement entity is realized as two supply chain entities, one for the header and one for the line.

259

260

Figure 2 Exchanged Document, Exchanged Document Context and Document Line Document



261

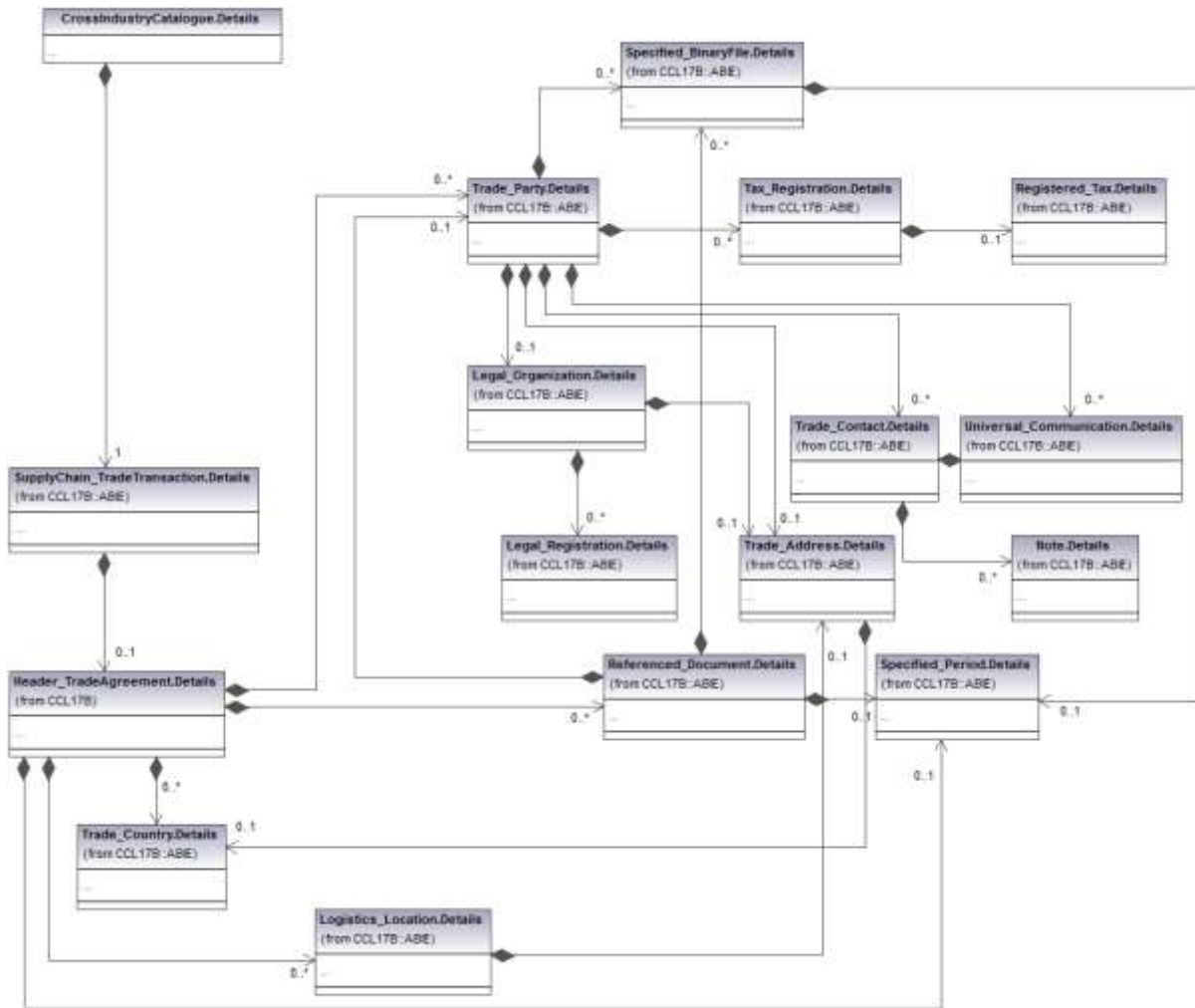
262

263

264

265

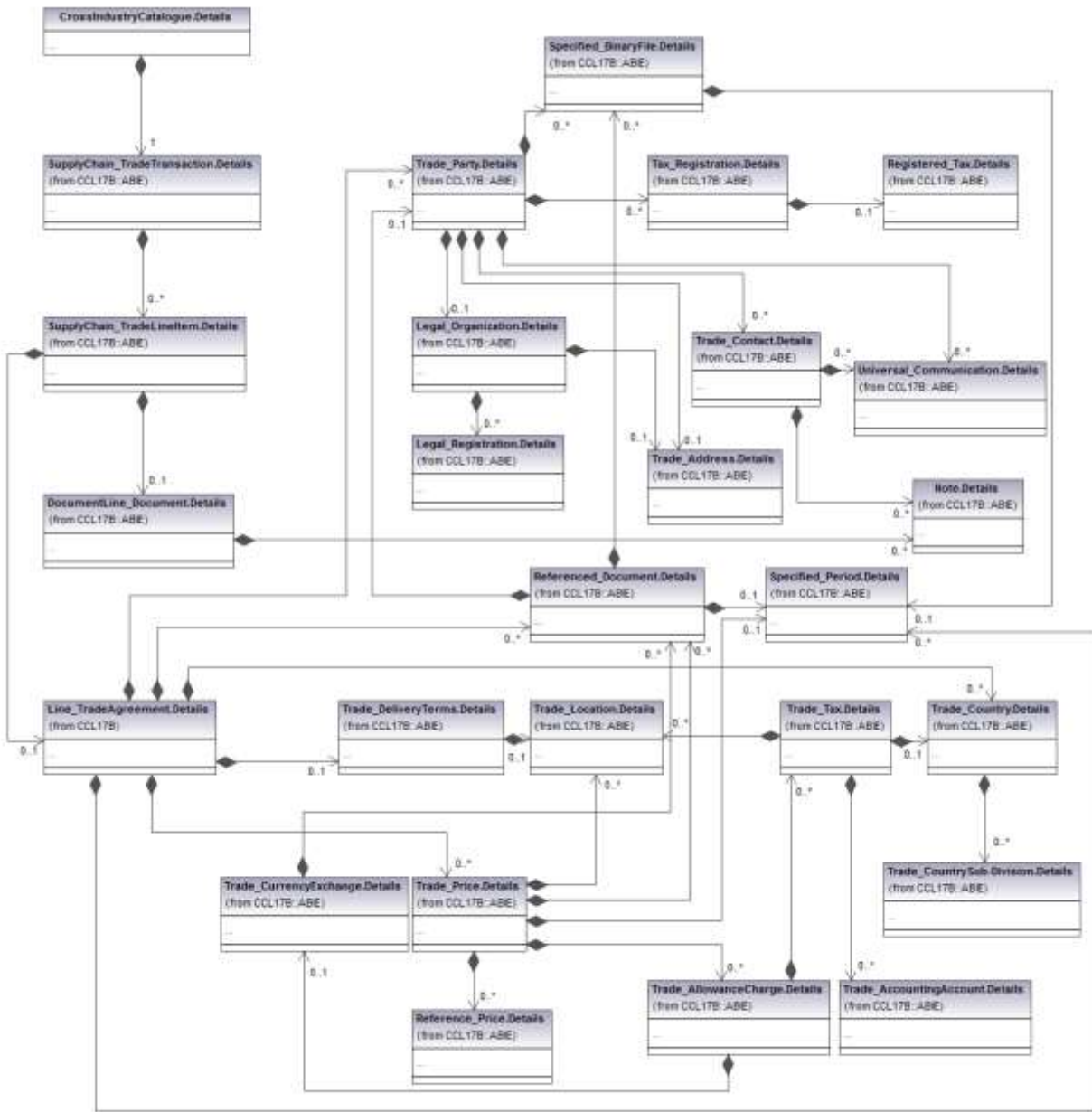
266 **Figure 3 Header Trade Agreement**



267
268
269
270
271
272
273

Publ

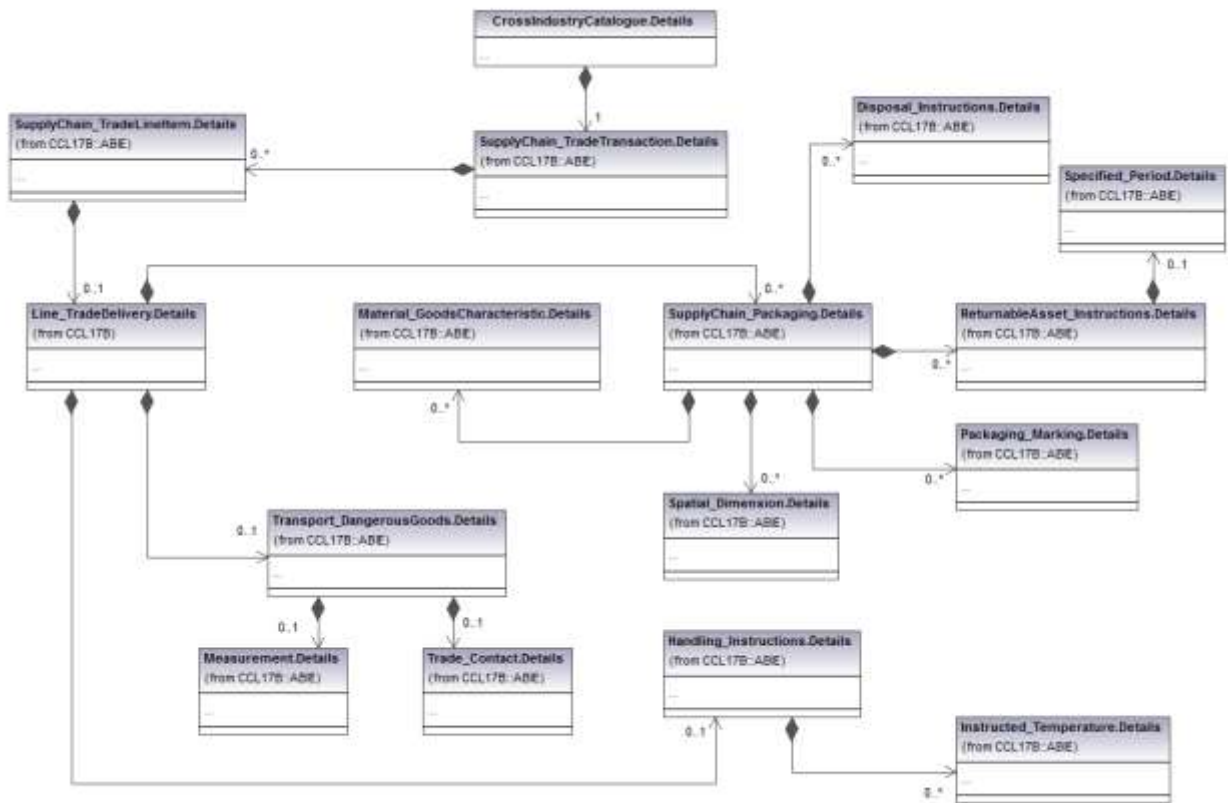
274 **Figure 4 Line Trade Agreement**



275
276
277
278
279
280
281
282
283
284

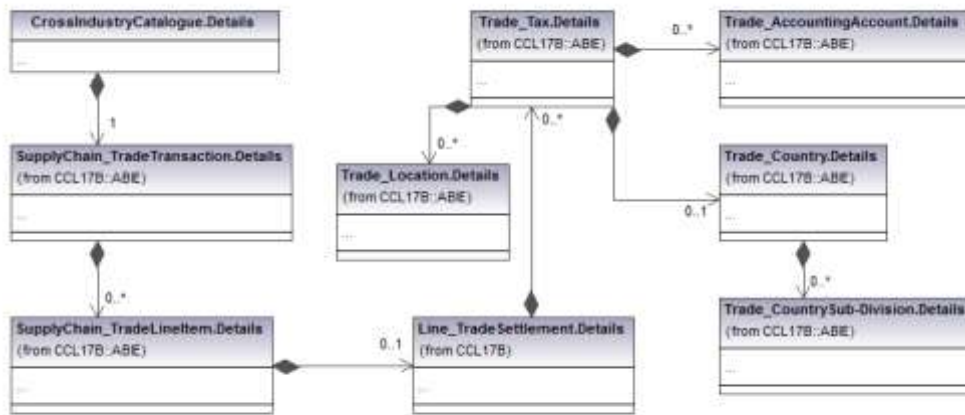


285 **Figure 5 Line Trade Delivery**



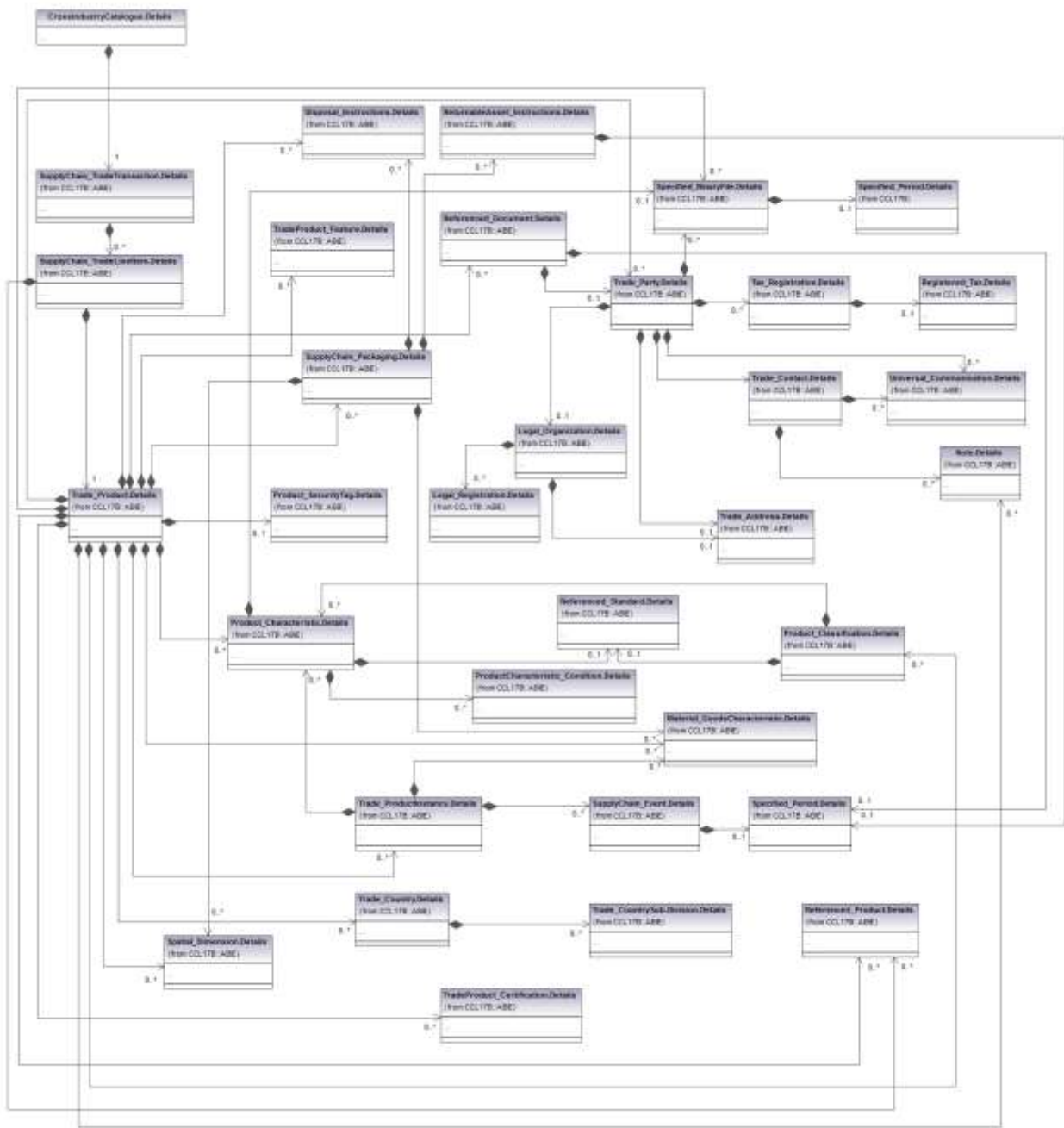
286
287

Public

288 **Figure 6 Line Trade Settlement**

289
 290
 291
 292
 293
 294

295 **Figure 7 Trade Product**
296



297
298
299
300
301
302
303
304
305
306
307
308
309



310 6.3 New and Changed Components

311

312 The new and changed components for the Cross Industry Catalogue will be identified by the SCRDM
 313 (Supply Chain Reference Data Model) project.

314

315 6.4 Detailed class diagrams

316

317

318

319

320

Below diagrams are detailing the CCTS Business Information Entities (BIEs) identified as part of the Cross Industry Catalogue. Compared to the canonical data model, as presented earlier, these multiple diagrams are broken down in a logical fashion. The Class Diagrams show the Aggregate Business Information Entity, and its properties (Basic Business Information Entities and its Association Business Information Entities), and relevant cardinalities.

321

322

323

Figure 8 Cross Industry Catalogue (root elements)

324



325

326

327

328

329

330

331

332

333

334

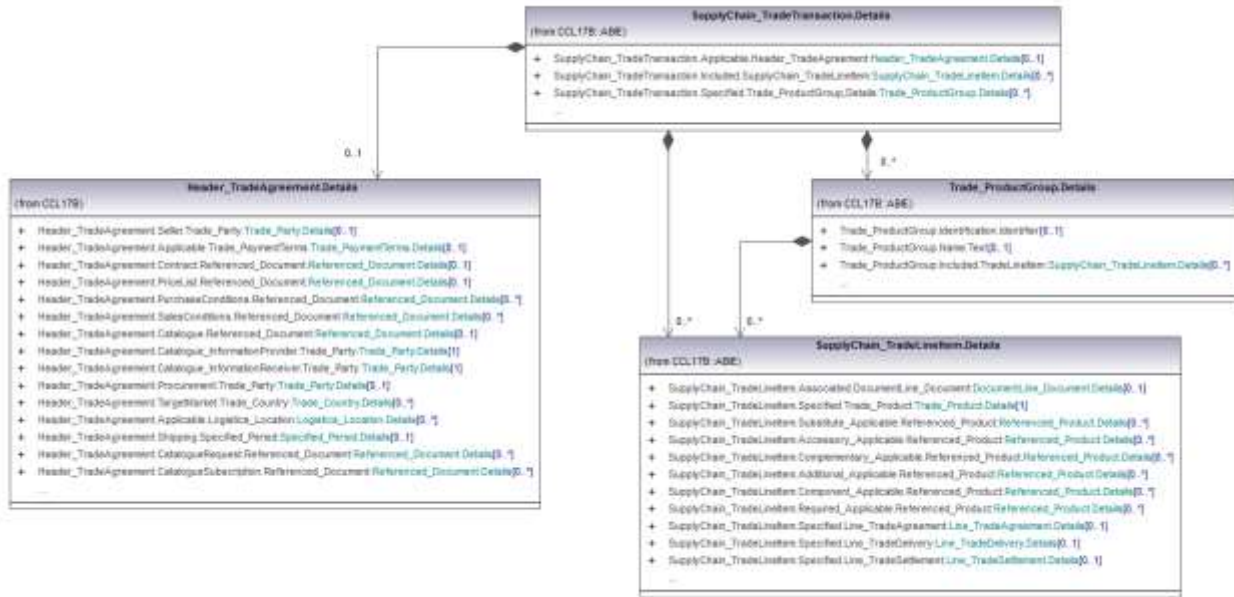
335

336

337

338

339 **Figure 9 Trade Transaction**
 340



341
 342
 343
 344
 345
 346
 347
 348
 349
 350
 351
 352
 353
 354
 355
 356
 357
 358
 359
 360
 361
 362
 363
 364
 365
 366
 367
 368
 369
 370
 371

Public Re

372 **Figure 10 Header Trade Agreement**
373



374

375 Figure 11 Trade Line Item

376
377
378
379
380
381
382

383
384

Figure 12 Line Trade Agreement



385
386
387



388
389

Figure 13 Line Trade Delivery



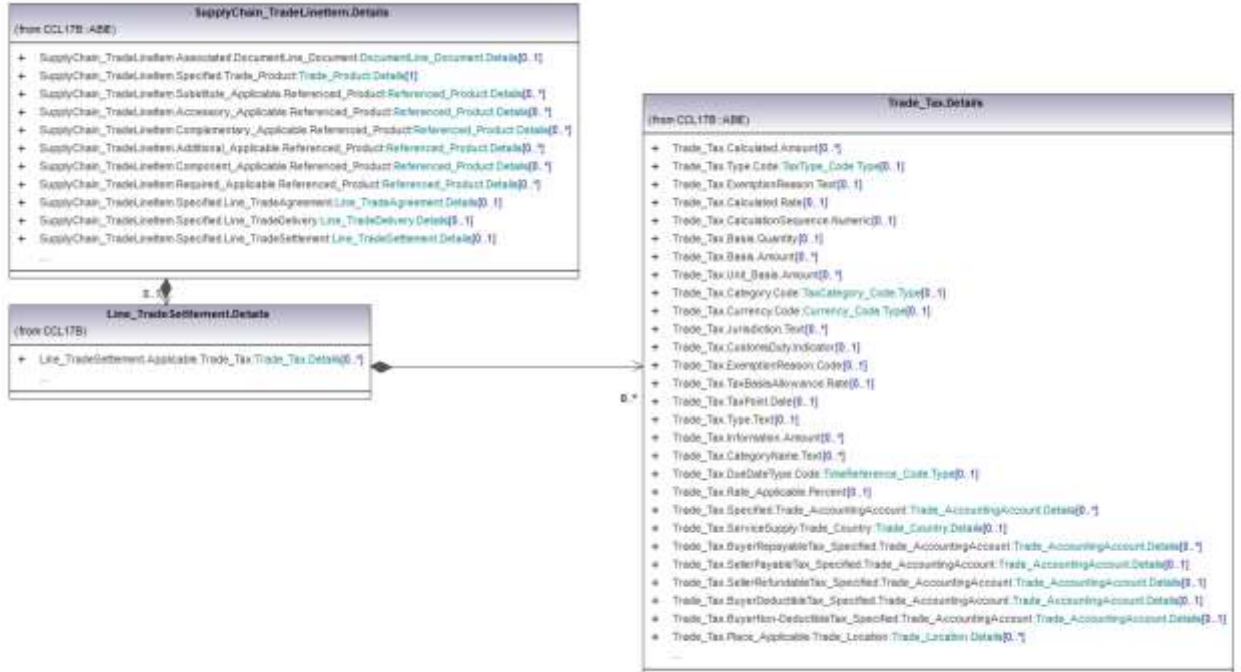
390
391

PUR

392 **Figure 14 Line Trade Settlement**

393

394



395

396

397

398

399

400

401

402

403

Public

404 **6.6 Core Components Model Extract**

405 Not applicable

406 **6.6.1.1 New and Changed Components**

407 Not applicable

408 **6.6.1.2 New and Changed Core Data Types**

409 Not applicable

410 **6.6.1.3 Presentation**

411 Not applicable

412

413 **6.7 Logical Message Structure**414 **6.7.1 Message Assembly**

415 The purpose of this section is to describe the content or business information payload of each
 416 message by showing the top level ABIEs that connect to the root of the message.

417 The following messages are defined:

- 418 • Cross Industry Catalogue (CIC)

419

420 **Table 4 Message Assembly Realization Table**

421

Type MA/ASMA	Dictionary Entry Name	Definition	Message Name Qualifier(s)	Message Name	Occurrence Min	Occurrence Max
MA	Cross Industry_Catalogue. Details	The Cross Industry Catalogue message.	Cross Industry	Catalogue		
ASMA	Cross Industry_Catalogue. Exchanged Document_ Context	The scenario or setting of an exchanged document, such as its business process application	Cross Industry	Catalogue	0	1
ASMA	Cross Industry_Catalogue. Exchanged_ Document	A collection of data for a Cross Industry Catalogue header that is exchanged between two or more parties in written, printed or electronic form.	Cross Industry	Catalogue	1	1
ASMA	Cross Industry_Catalogue. Supply Chain_ Trade Transaction	The trade line items, trade agreement, trade delivery and trade settlement details included in this Cross Industry Catalogue Header.	Cross Industry	Catalogue	1	1

422

423



CCBDA Cross
Industry Catalogue |

424

425

426 CCBDA Cross Industry Catalogue Message Assemblyv1.xls

427

428 **8 Business Information Entities Used**

429 This section provides a complete listing of ABIEs required for all the messages defined in this RSM
430 showing the ABIEs, Properties and Associations, their Dictionary Entry Names and cardinalities.

431 The following table of Aggregate Business Information Entities (ABIEs) represents the Business
432 Information Entities used in the Cross Industry Catalogue (CIC) message.

433 Below, embedded excel file includes the CCL ABIE's and their relationship to the message Business
434 Information Entities (MBIE's). Restrictions on the CCL ABIE's are shown in this file.

435



Relationship CCL
ABIE - CCBDA CIC M

436

437

Relationship CCL ABIE - CCBDA CIC MBIE.xlsx

438

439

Public Review

Table 5 BIEs used in Catalogue

ABIE/ BBIE/ ASBIE	Dictionary Entry Name	Short Name	Definition	TDED	Qualified Data Type UID	Occurrence MIN	Occurrence Max
ABIE	Contact_ Person. Details	Contact Person	An individual human being in a position to give assistance or information.				
BBIE	Contact_ Person. Family Name. Text	Family Name	The name, expressed as text, that this contact person shares with members of his/her family.	(3500)		0	1
BBIE	Contact_ Person. Given Name. Text	Given Name	The name, expressed as text, given to this contact person, usually by parents at birth.	(3460)		0	1
BBIE	Contact_ Person. Middle Name. Text	Middle Name	The middle name, expressed as text, of this contact person, usually given by parents at birth.			0	1
ABIE	Disposal_ Instructions. Details	Disposal Instructions	A set of instructions detailing how to properly dispose of a material.				
BBIE	Disposal_ Instructions. Material. Identifier	Material ID	The identifier of the material to which these disposal instructions apply.			0	1
BBIE	Disposal_ Instructions. Recycling_ Description. Code	Recycling Description Code	A code describing recycling in these disposal instructions.	(4401)		0	unbounded
BBIE	Disposal_ Instructions. Description. Text	Description	A textual description of these disposal instructions.	(4400)		0	unbounded
BBIE	Disposal_ Instructions. Recycling_ Procedure. Text	Recycling Procedure Text	A recycling procedure, expressed as text, for these disposal instructions.			0	unbounded
ABIE	Document Context_ Parameter. Details	Document Context Parameter	A feature that is fixed for a particular document context.				
BBIE	Document Context_ Parameter. Identification. Identifier	ID	The unique identifier of this document context parameter.			0	1
BBIE	Document Context_ Parameter. Value. Text	Value Text	The value, expressed as text, of this document context parameter.			0	1

ABIE/ BBIE/ ASBIE	Dictionary Entry Name	Short Name	Definition	TDED	Qualified Data Type UID	Occurrence MIN	Occurrence Max
ASBIE	Document Context_ Parameter. Specified. Document_ Version	Version	The document version specified for this document context parameter.			0	1
ABIE	Document Line_ Document. Details	Document Line	A collection of data for a line on a piece of written, printed or electronic matter that provides information or evidence.				
BBIE	Document Line_ Document. Line. Identifier	Line ID	The unique identifier of this document line.	(1156)		1	1
BBIE	Document Line_ Document. Line Status. Code	Status Code	The code specifying the status of this document line.	(1073)	UN02000124	1	1
BBIE	Document Line_ Document. Latest_ Revision. Date Time	Latest Revision Date Time	The date, time, date time, or other date time value for the latest revision of this document line.			0	1
ASBIE	Document Line_ Document. Included. Note	Note	A note included in this document line.			0	unbounded
ASBIE	Document Line_ Document. Effective. Specified_ Period	Effective Period	The period within which this document line is effective.			0	1
ABIE	Document_ Version. Details	Document Version	A specific variant of a document.				
BBIE	Document_ Version. Identification. Identifier	ID	The unique identifier for this document version.			0	1
BBIE	Document_ Version. Name. Text	Name	The name, expressed as text, of this document version.			0	1
BBIE	Document_ Version. Issue. Date Time	Issue Date Time	The date, time, date and time or other date time value of issue of this document version.			0	1
ABIE	Exchanged Document_ Context. Details	Exchanged Document Context	The scenario or setting of an exchanged document, such as its business process application context.				

ABIE/ BBIE/ ASBIE	Dictionary Entry Name	Short Name	Definition	TDED	Qualified Data Type UID	Occurrence MIN	Occurrence Max
BBIE	Exchanged Document_ Context. Specified_ Transaction. Identifier	Transaction ID	The identifier of a specified transaction in this exchanged document context.			0	1
ASBIE	Exchanged Document_ Context. Business Process_ Specified. Document Context_ Parameter	Business Process	A business process context parameter specified for this exchanged document context.			0	unbounded
ASBIE	Exchanged Document_ Context. BIM_ Specified. Document Context_ Parameter	BIM	A Business Information Master (BIM) context parameter specified for this exchanged document context.			0	unbounded
ASBIE	Exchanged Document_ Context. Scenario_ Specified. Document Context_ Parameter	Scenario	A scenario context parameter specified for this exchanged document context.			0	unbounded
ASBIE	Exchanged Document_ Context. Application_ Specified. Document Context_ Parameter	Application	An application context parameter specified for this exchanged document context.			0	unbounded
ASBIE	Exchanged Document_ Context. Guideline_ Specified. Document Context_ Parameter	Guideline	A guideline context parameter specified for this exchanged document context.			0	unbounded
ASBIE	Exchanged Document_ Context. Subset_ Specified. Document Context_ Parameter	Subset	A subset context parameter specified for this exchanged document context.			0	unbounded
ASBIE	Exchanged Document_ Context. Message Standard_ Specified. Document Context_ Parameter	Message Standard	The message standard document context parameter specified for this exchanged document context.			0	1
ABIE	Exchanged_ Document. Details	Exchanged Document	A collection of data for a piece of written, printed or electronic matter that is exchanged between two or more parties.				
BBIE	Exchanged_ Document. Identification. Identifier	ID	The unique identifier of this exchanged document.	(1004)		1	1

ABIE/ BBIE/ ASBIE	Dictionary Entry Name	Short Name	Definition	TDED	Qualified Data Type UID	Occurrence MIN	Occurrence Max
BBIE	Exchanged_ Document. Name. Text	Name	A name, expressed as text, of this exchanged document.	(1000)		0	unbounded
BBIE	Exchanged_ Document. Type. Code	Type Code	The code specifying the type of exchanged document.	(1001)	UN02000006	0	1
BBIE	Exchanged_ Document. Issue. Date Time	Issue Date Time	The date, time, date time or other date time value for the issuance of this exchanged document.	(2007)		0	1
BBIE	Exchanged_ Document. Copy. Indicator	Copy Indicator	The indication of whether or not this exchanged document is a copy.	(4366)		0	1
BBIE	Exchanged_ Document. Language. Identifier	Language Code	A unique identifier for a language used in this exchanged document.	[3453]		0	unbounded
BBIE	Exchanged_ Document. Line Count. Numeric	Line Count	The count of the number of lines in this exchanged document.			0	1
BBIE	Exchanged_ Document. Purpose. Code	Purpose Code	A code specifying the purpose of this exchanged document, such as request or reminder.	(1225)	UN02000125	1	1
BBIE	Exchanged_ Document. Revision. Date Time	Revision Date Time	The date, time, date time or other date time value for the revision of this exchanged document.			0	1
BBIE	Exchanged_ Document. Global_ Identification. Identifier	Global ID	The unique global identifier for this exchanged document.	(1004)		0	1
BBIE	Exchanged_ Document. Revision_ Identification. Identifier	Revision ID	The unique identifier of the revision of this exchanged document.	(1004)		0	1
BBIE	Exchanged_ Document. Previous Revision_ Identification. Identifier	Previous Revision ID	The unique identifier of the previous revision of this exchanged document.	(1004)		0	1
ASBIE	Exchanged_ Document. Included. Note	Note	A note included in this exchanged document.			0	unbounded
ASBIE	Exchanged_ Document. Effective. Specified_ Period	Effective Period	The specified period within which this exchanged document is effective.			0	1

ABIE/ BBIE/ ASBIE	Dictionary Entry Name	Short Name	Definition	TDED	Qualified Data Type UID	Occurrence MIN	Occurrence Max
ABIE	Geographical Coordinate. Details	Geographical Coordinate	A set of geographical coordinates of a specific point such as the longitude, latitude and altitude.				
BBIE	Geographical Coordinate. Altitude. Measure	Altitude	The measure of the altitude that reflects the vertical elevation of an object above a surface for this geographical coordinate (Reference ISO 6709).			0	1
BBIE	Geographical Coordinate. Latitude. Measure	Latitude	The measure of the latitude as an angular distance north or south from the Equator meridian to the meridian of a specific place for this geographical coordinate (Reference ISO 6709).	[6000]		0	1
BBIE	Geographical Coordinate. Longitude. Measure	Longitude	The measure of the longitude as an angular distance east or west from the Greenwich meridian to the meridian of a specific place (Reference ISO 6709).	[6002]		0	1
BBIE	Geographical Coordinate. System. Identifier	System ID	The unique identifier of the reference system used for measuring a geographical coordinate.			0	1
ABIE	Handling_ Instructions. Details	Handling Instructions	Handling information of an instructive nature.				
BBIE	Handling_ Instructions. Handling. Code	Handling Code	A code specifying these handling instructions.			0	unbounded
BBIE	Handling_ Instructions. Procedure. Text	Procedure Text	A procedure, expressed as text, for these handling instructions.			0	unbounded
BBIE	Handling_ Instructions. Description. Text	Description	A textual description of these handling instructions.	(4400)		0	unbounded
BBIE	Handling_ Instructions. Description. Code	Description Code	A code specifying a description of these handling instructions.	(4401)		0	unbounded

ABIE/ BBIE/ ASBIE	Dictionary Entry Name	Short Name	Definition	TDED	Qualified Data Type UID	Occurrence MIN	Occurrence Max
BBIE	Handling_ Instructions. Maximum Stackability Weight_ Applicable. Measure	Maximum Stackability Weight	The maximum stackability weight applicable to these handling instructions.	(6411)	UN02000095	0	1
BBIE	Handling_ Instructions. Maximum Stackability_ Applicable. Quantity	Maximum Stackability Quantity	The maximum number of units which can be stacked on top of each other according to these handling instructions.			0	1
BBIE	Handling_ Instructions. Maximum Storage Humidity_ Applicable. Measure	Maximum Storage Humidity	The measure of the maximum storage humidity applicable to these handling instructions.			0	1
BBIE	Handling_ Instructions. Minimum Storage Humidity_ Applicable. Measure	Minimum Storage Humidity	The measure of the minimum storage humidity applicable to these handling instructions.			0	1
ASBIE	Handling_ Instructions. Applicable. Transport Setting_ Temperature	Transport Setting Temperature	A transport related temperature setting applicable to these handling instructions.			0	unbounded
ASBIE	Handling_ Instructions. Delivery_ Applicable. Instructed_ Temperature	Delivery Instructed Temperature	The instructed temperature for delivery applicable to these handling instructions.			0	1
ASBIE	Handling_ Instructions. Market Delivery_ Applicable. Instructed_ Temperature	Market Delivery Instructed Temperature	The instructed temperature for market delivery applicable to these handling instructions.			0	1
ASBIE	Handling_ Instructions. Storage_ Applicable. Instructed_ Temperature	Storage Instructed Temperature	The instructed temperature for storage applicable to these handling instructions.			0	1
ABIE	Header_ Trade Agreement. Details	Header Trade Agreement	The contractual terms of a header trade agreement.				
ASBIE	Header_ Trade Agreement. Catalogue_ Information Receiver. Trade_ Party	Catalogue Information Receiver	The party that receives catalogue information for this header trade agreement.			1	1

ABIE/ BBIE/ ASBIE	Dictionary Entry Name	Short Name	Definition	TDED	Qualified Data Type UID	Occurrence MIN	Occurrence Max
ASBIE	Header_ Trade Agreement. Catalogue_ Information Provider. Trade_ Party	Catalogue Information Provider	The party that provides catalogue information for this header trade agreement.			1	1
ASBIE	Header_ Trade Agreement. Seller. Trade_ Party	Seller	The seller party for this header trade agreement.			0	1
ASBIE	Header_ Trade Agreement. Procurement. Trade_ Party	Procurement Party	The procurement party for this header trade agreement.			0	1
ASBIE	Header_ Trade Agreement. Applicable. Trade_ Payment Terms	Payment Terms	The payment terms applicable to this header trade agreement.			0	1
ASBIE	Header_ Trade Agreement. Contract. Referenced_ Document	Contract Document	A contract document referenced in this header trade agreement.			0	unbounded
ASBIE	Header_ Trade Agreement. Price List. Referenced_ Document	Price List Document	The price list document referenced in this header trade agreement.			0	1
ASBIE	Header_ Trade Agreement. Catalogue. Referenced_ Document	Catalogue Document	A catalogue document referenced in this header trade agreement.			0	1
ASBIE	Header_ Trade Agreement. Purchase_ Conditions. Referenced_ Document	Purchase Conditions Document	A purchase conditions document referenced in this header trade agreement.			0	unbounded
ASBIE	Header_ Trade Agreement. Sales_ Conditions. Referenced_ Document	Sales Conditions Document	A sales conditions document referenced in this header trade agreement.			0	unbounded
ASBIE	Header_ Trade Agreement. Target Market. Trade_ Country	Target Market Country	A target market country for this header trade agreement.			0	unbounded
ASBIE	Header_ Trade Agreement. Applicable. Logistics_ Location	Logistics Location	A logistics location or place applicable to this header trade agreement.			0	unbounded
ASBIE	Header_ Trade Agreement. Shipping. Specified_ Period	Shipping Period	The shipping period specified in this header trade agreement.			0	1

ABIE/ BBIE/ ASBIE	Dictionary Entry Name	Short Name	Definition	TDED	Qualified Data Type UID	Occurrence MIN	Occurrence Max
ASBIE	Header_ Trade Agreement. Catalogue Request. Referenced_ Document	Catalogue Request Document	A catalogue request document referenced in this header trade agreement.			0	unbounded
ASBIE	Header_ Trade Agreement. Catalogue Subscription. Referenced_ Document	Catalogue Subscription Document	A catalogue subscription document referenced in this header trade agreement.			0	unbounded
ABIE	Instructed_ Temperature. Details	Temperature Instructions	Temperature settings instructed for storage or movement of goods.				
BBIE	Instructed_ Temperature. Maximum_ Value. Measure	Maximum Value	The measure of the maximum value of this instructed temperature.			0	1
BBIE	Instructed_ Temperature. Minimum_ Value. Measure	Minimum Value	The measure of the minimum value of this instructed temperature.			0	1
ABIE	Keyword. Details	Keyword	A significant word, part of word or phrase that is used to enable indexing of or searching within a textual repository, such as a product catalogue or library.				
BBIE	Keyword. Name. Text	Name	A name, expressed as text, for this keyword.			0	unbounded
ABIE	Legal_ Organization. Details	Legal Organization	An organization set up on a legal basis as a business, government body, department, charity, or financial institution.				
BBIE	Legal_ Organization. Legal Classification. Code	Legal Classification Code	The code specifying the legal classification of this organization, such as Incorporated (Inc), Limited Liability Corporation (LLC) or non-profit.			0	1
BBIE	Legal_ Organization. Name. Text	Name	A name, expressed as text, of this legally set up organization.			0	1

ABIE/ BBIE/ ASBIE	Dictionary Entry Name	Short Name	Definition	TDED	Qualified Data Type UID	Occurrence MIN	Occurrence Max
BBIE	Legal_ Organization. Identification. Identifier	ID	A unique identifier for this legally set up organization.			0	1
BBIE	Legal_ Organization. Trading Business Name. Text	Trading Name	The trading business name, expressed as text, of this legally set up organization.			0	1
ASBIE	Legal_ Organization. Postal. Trade_ Address	Postal Address	A postal address for this legally set up organization.			0	1
ASBIE	Legal_ Organization. Authorized. Legal_ Registration	Authorized Registration	A legal registration authorized for this legally set up organization.			0	unbounded
ABIE	Legal_ Registration. Details	Legal Registration	The recording of items or details for a specific legal purpose.				
BBIE	Legal_ Registration. Type. Code	Type Code	A code specifying the type of this legal registration.			0	1
BBIE	Legal_ Registration. Identification. Identifier	ID	A unique identifier for this legal registration.			0	1
ABIE	Line_ Trade Agreement. Details	Line Trade Agreement	The contractual terms of a line trade agreement.				
BBIE	Line_ Trade Agreement. Product Availability. Code	Product Availability Code	The code specifying the product availability according to this line trade agreement.			0	1
BBIE	Line_ Trade Agreement. Product Orderable. Indicator	Product Orderable Indicator	The indication of whether or not the product can be ordered according to this line trade agreement.			0	1
BBIE	Line_ Trade Agreement. Product Reorderable. Indicator	Product Reorderable Indicator	The indication of whether or not the product can be reordered according to this line trade agreement.			0	1

ABIE/ BBIE/ ASBIE	Dictionary Entry Name	Short Name	Definition	TDED	Qualified Data Type UID	Occurrence MIN	Occurrence Max
BBIE	Line_ Trade Agreement. Product Made To Order. Indicator	Product Made To Order Indicator	The indication of whether or not, according to this line trade agreement, the product is manufactured, built or customized only after receipt of order.			0	1
BBIE	Line_ Trade Agreement. Delivery_ Order Fulfilment Lead Time. Measure	Delivery Order Fulfilment Lead Time	The measure of the expected time interval between the receipt of an order and its delivery fulfilment according to this line trade agreement.	(6411)	UN02000026	0	1
BBIE	Line_ Trade Agreement. Pick-Up_ Order Fulfilment Lead Time. Measure	Pick-Up Order Fulfilment Lead Time	The measure of the expected time interval between the receipt of an order and its pick-up fulfilment according to this line trade agreement.	(6411)	UN02000026	0	1
BBIE	Line_ Trade Agreement. Minimum_ Product Orderable. Quantity	Minimum Product Orderable Quantity	The minimum product orderable quantity for this line trade agreement.			0	1
BBIE	Line_ Trade Agreement. Maximum_ Product Orderable. Quantity	Maximum Product Orderable Quantity	The maximum product orderable quantity for this line trade agreement.			0	1
BBIE	Line_ Trade Agreement. Incremental_ Product Orderable. Quantity	Incremental Product Orderable Quantity	The incremental product orderable quantity for this line trade agreement.			0	1
BBIE	Line_ Trade Agreement. Order_ Product Unit Measure. Code	Order Product Unit Of Measure Code	The code specifying the order product unit of measure, such as kilogram or litre, for this line trade agreement.			0	1
BBIE	Line_ Trade Agreement. Resale_ Product Unit Measure. Code	Resale Product Unit Of Measure Code	The code specifying the resale product unit of measure, such as kilogram or litre, for this trade line agreement.			0	1
BBIE	Line_ Trade Agreement. Information Use Restriction. Indicator	Information Use Restriction Indicator	The indication of whether or not the use of the information provided in this line trade agreement is restricted.			0	1

ABIE/ BBIE/ ASBIE	Dictionary Entry Name	Short Name	Definition	TDED	Qualified Data Type UID	Occurrence MIN	Occurrence Max
ASBIE	Line_ Trade Agreement. Seller. Trade_ Party	Seller	The seller party for this line trade agreement.			0	1
ASBIE	Line_ Trade Agreement. Procurement. Trade_ Party	Procurement Party	The procurement party for this line trade agreement.			0	1
ASBIE	Line_ Trade Agreement. Catalogue_ Information Provider. Trade_ Party	Catalogue Information Provider	The party that provides catalogue information for this line trade agreement.			0	1
ASBIE	Line_ Trade Agreement. Support Centre. Trade_ Party	Support Centre	The support centre party for this line trade agreement.			0	1
ASBIE	Line_ Trade Agreement. Carrier. Trade_ Party	Carrier	A carrier party for this line trade agreement.			0	1
ASBIE	Line_ Trade Agreement. Applicable. Trade_ Delivery Terms	Trade Delivery Terms	The terms of delivery applicable to this line trade agreement.			0	1
ASBIE	Line_ Trade Agreement. Gross Price_ Product. Trade_ Price	Product Gross Price	A gross product price in this line trade agreement.			0	unbounded
ASBIE	Line_ Trade Agreement. Net Price_ Product. Trade_ Price	Product Net Price	A net product price in this line trade agreement.			0	unbounded
ASBIE	Line_ Trade Agreement. Target Market. Trade_ Country	Target Market Country	A target market country for this line trade agreement.			0	unbounded
ASBIE	Line_ Trade Agreement. Ordering. Specified_ Period	Ordering Period	The ordering period specified in this line trade agreement.			0	1
ASBIE	Line_ Trade Agreement. Minimum Order Quantity_ Ordering. Specified_ Period	Minimum Order Quantity Ordering Period	The minimum order quantity ordering period specified in this line trade agreement.			0	1
ASBIE	Line_ Trade Agreement. Maximum Order Quantity_ Ordering. Specified_ Period	Maximum Order Quantity Ordering Period	The maximum order quantity ordering period specified in this line trade agreement.			0	1

ABIE/ BBIE/ ASBIE	Dictionary Entry Name	Short Name	Definition	TDED	Qualified Data Type UID	Occurrence MIN	Occurrence Max
ASBIE	Line_ Trade Agreement. Exclusivity. Specified_ Period	Exclusivity Period	The exclusivity period specified in this line trade agreement.			0	1
ASBIE	Line_ Trade Agreement. Resale. Specified_ Period	Resale Period	The resale period specified in this line trade agreement.			0	1
ASBIE	Line_ Trade Agreement. Guaranteed Product Life Span. Specified_ Period	Guaranteed Product Life Span Period	The guaranteed product life span specified in this line trade agreement.			0	1
ASBIE	Line_ Trade Agreement. Immediate Previous_ Price List. Referenced_ Document	Immediate Previous Price List Document	The immediate previous price list document referenced in this line trade agreement.			0	1
ASBIE	Line_ Trade Agreement. Contract. Referenced_ Document	Contract Document	A contract document referenced in this line trade agreement.			0	unbounded
ASBIE	Line_ Trade Agreement. Price List. Referenced_ Document	Price List Document	The price list document referenced in this line trade agreement.			0	1
ASBIE	Line_ Trade Agreement. Sales_ Conditions. Referenced_ Document	Sales Conditions Document	A sales conditions document referenced by this line trade agreement.			0	unbounded
ABIE	Line_ Trade Delivery. Details	Line Trade Delivery	Shipping arrangements and movement of products and or services including despatch and delivery at a line level.				
ASBIE	Line_ Trade Delivery. Specified. Handling_ Instructions	Handling Instructions	Handling instructions, at line level, specified for this trade delivery.			0	1
ASBIE	Line_ Trade Delivery. Applicable. Transport_ Dangerous Goods	Transport Dangerous Goods	The transport dangerous goods details, at line level, applicable to this trade delivery.			0	1
ASBIE	Line_ Trade Delivery. Included. Supply Chain_ Packaging	Included Packaging	Packaging included, at line level, in this trade delivery.			0	unbounded

ABIE/ BBIE/ ASBIE	Dictionary Entry Name	Short Name	Definition	TDED	Qualified Data Type UID	Occurrence MIN	Occurrence Max
ABIE	Line_ Trade Settlement. Details	Line Trade Settlement	The information, at a line level, that enables the reconciliation of a financial transaction with the item(s) that the financial transaction is intended to settle, for example a commercial invoice.				
ASBIE	Line_ Trade Settlement. Applicable. Trade_ Tax	Trade Tax	A tax applicable to this line trade settlement.			0	unbounded
ABIE	Logistics_ Location. Details	Logistics Location	A logistics related physical location or place.				
BBIE	Logistics_ Location. Identification. Identifier	ID	A unique identifier for this logistics related location, such as a United Nations Location Code (UNLOCODE) or GS1 Global Location Number (GLN).	(3225)		0	1
BBIE	Logistics_ Location. Name. Text	Name	A name, expressed as text, of this logistics related location.	(3224)		0	unbounded
BBIE	Logistics_ Location. Type. Code	Type Code	A code specifying the type of this logistics related location.	(3227)		0	1
BBIE	Logistics_ Location. Description. Text	Description	A textual description of this logistics related location.			0	unbounded
ASBIE	Logistics_ Location. Postal. Trade_ Address	Postal Address	The postal trade address information for this logistics related location.			0	1
ASBIE	Logistics_ Location. Physical. Geographical Coordinate	Geographical Coordinates	Geographical coordinate information for this logistics related location.			0	1
ABIE	Material_ Goods Characteristic. Details	Material Goods Characteristic	A distinctive feature of a material contained within physical goods.				
BBIE	Material_ Goods Characteristic. Description. Text	Description	A textual description of this material goods characteristic.			0	unbounded

ABIE/ BBIE/ ASBIE	Dictionary Entry Name	Short Name	Definition	TDED	Qualified Data Type UID	Occurrence MIN	Occurrence Max
BBIE	Material_ Goods Characteristic. Type. Code	Type Code	The code specifying the type of material goods characteristic.			0	1
BBIE	Material_ Goods Characteristic. Proportional_ Constituent. Percent	Constituent Percent	The percentage presence of the material within the goods for this material goods characteristic.			0	1
BBIE	Material_ Goods Characteristic. Absolute Presence_ Weight. Measure	Absolute Presence Weight	The weight measure of the absolute presence of this material goods characteristic.			0	1
BBIE	Material_ Goods Characteristic. Absolute Presence_ Volume. Measure	Absolute Presence Volume	The volume measure of the absolute presence of this material goods characteristic.			0	1
ABIE	Measurement. Details	Measurement	An amount, size, or extent as established by measuring.				
BBIE	Measurement. Comparison Operator. Code	Comparison Operator Code	A code specifying the operator, such as, less than, greater than or equal to, for comparing two actual measures.			0	unbounded
BBIE	Measurement. Actual. Measure	Actual Measure	An actual measure for this measurement.	(6314)		0	unbounded
BBIE	Measurement. Method. Text	Method Text	A measurement method expressed as text.			0	unbounded
BBIE	Measurement. Condition. Measure	Condition Measure	A measure of a condition for this measurement.			0	unbounded
BBIE	Measurement. Type. Code	Type Code	A code specifying a type of measurement.			0	unbounded
BBIE	Measurement. Description. Text	Description	A textual description of this measurement.			0	unbounded
ABIE	Note. Details	Note	A textual or coded description, such as a remark or additional information.				

ABIE/ BBIE/ ASBIE	Dictionary Entry Name	Short Name	Definition	TDED	Qualified Data Type UID	Occurrence MIN	Occurrence Max
BBIE	Note. Subject. Text	Subject Text	The subject, expressed as text, of this note.			0	1
BBIE	Note. Content. Code	Content Code	A code specifying the content of this note.	(4441)		0	1
BBIE	Note. Content. Text	Content Text	A content, expressed as text, of this note.	(4440)		0	unbounded
BBIE	Note. Subject. Code	Subject Code	The code specifying the subject of this note.	(4451)		0	1
BBIE	Note. Identification. Identifier	ID	A unique identifier for this note.			0	1
ABIE	Packaging_ Marking. Details	Packaging Marking	An inscription, stamp or label on packaging, such as to indicate date, ownership, quality, manufacture or origin.				
BBIE	Packaging_ Marking. Type. Code	Type Code	A code specifying a type of packaging marking.	(7511)	UN02000126	0	unbounded
BBIE	Packaging_ Marking. Content. Text	Content Text	Content, expressed as text, of this packaging marking.			0	unbounded
BBIE	Packaging_ Marking. Content. Date Time	Content Date Time	The date, time, date time or other date time value for the content of this packaging marking.			0	1
BBIE	Packaging_ Marking. Content. Amount	Content Amount	Content, expressed as a monetary amount, for this packaging marking.			0	unbounded
BBIE	Packaging_ Marking. Barcode_ Type. Code	Barcode Type Code	A code specifying a type of barcode for this packaging marking.	(7511)		0	unbounded
BBIE	Packaging_ Marking. Content. Code	Content Code	Content, expressed as a code, of this packaging marking.			0	unbounded
BBIE	Packaging_ Marking. Automatic Data Capture Method_ Type. Code	Automatic Data Capture Method Type Code	A code specifying an automatic data capture method type for this packaging marking.	(7233)	UN02000119	0	unbounded

ABIE/ BBIE/ ASBIE	Dictionary Entry Name	Short Name	Definition	TDED	Qualified Data Type UID	Occurrence MIN	Occurrence Max
ABIE	Product Characteristic_ Condition. Details	Product Characteristic Condition	A state that applies to a product characteristic.				
BBIE	Product Characteristic_ Condition. Type. Code	Type Code	The code specifying the type of product characteristic condition.			0	1
BBIE	Product Characteristic_ Condition. Name. Text	Name	A name, expressed as text, for this product characteristic condition.			0	unbounded
BBIE	Product Characteristic_ Condition. Value. Measure	Value	The measure of the value for this product characteristic condition.			0	1
ABIE	Product_ Characteristic. Details	Product Characteristic	A prominent attribute or aspect of a product.				
BBIE	Product_ Characteristic. Identification. Identifier	ID	A unique identifier for this product characteristic.			0	unbounded
BBIE	Product_ Characteristic. Type. Code	Type Code	A code specifying a type of product characteristic.			0	1
BBIE	Product_ Characteristic. Description. Text	Description	A textual description of this product characteristic.	(7036)		0	unbounded
BBIE	Product_ Characteristic. Value. Measure	Value Measure	A measure of a value for this product characteristic.			0	1
BBIE	Product_ Characteristic. Measurement Method. Code	Measurement Method Code	A code specifying a measurement method for this product characteristic.			0	1
BBIE	Product_ Characteristic. Content_ Type. Code	Content Type Code	A code specifying the content type of this product characteristic.			0	1
BBIE	Product_ Characteristic. Value. Code	Value Code	The code specifying the value of this product characteristic.	(7111)		0	1
BBIE	Product_ Characteristic. Value. Date Time	Value Date Time	The value for this product characteristic expressed as a date, time, date time, or other date time value.			0	1
BBIE	Product_ Characteristic. Value. Indicator	Value Indicator	The value for this product characteristic expressed as an indicator.			0	1

ABIE/ BBIE/ ASBIE	Dictionary Entry Name	Short Name	Definition	TDED	Qualified Data Type UID	Occurrence MIN	Occurrence Max
BBIE	Product_ Characteristic. Value. Text	Value Text	A value, expressed as text, for this product characteristic.	(7110)		0	unbounded
ASBIE	Product_ Characteristic. Applicable. Referenced_ Standard	Applicable Referenced Standard	The referenced standard that is applicable to this product characteristic.			0	1
ASBIE	Product_ Characteristic. Applicable. Product Characteristic_ Condition	Applicable Condition	A condition applicable to this product characteristic.			0	unbounded
ASBIE	Product_ Characteristic. Value. Specified_ Binary File	Value Binary File	The value for this product characteristic expressed in a binary file.			0	1
ABIE	Product_ Classification. Details	Product Classification	A systematic arrangement of products in classes or categories according to established criteria.				
BBIE	Product_ Classification. System. Identifier	System ID	The unique identifier of the classification system for this product classification.	(9019)		0	1
BBIE	Product_ Classification. System Name. Text	System Name	A name, expressed as text, of the classification system for this product classification.	(9018)		0	unbounded
BBIE	Product_ Classification. Class. Code	Class Code	The code specifying the class for this product classification.	(9021)		0	1
BBIE	Product_ Classification. Class Name. Text	Class Name	A class name, expressed as text, for this product classification.	(9020)		0	unbounded
BBIE	Product_ Classification. Sub_ Class. Code	Sub-Class Code	The code specifying the sub class for this product classification.			0	1
ASBIE	Product_ Classification. Class. Product_ Characteristic	Product Class Characteristic	A product class characteristic for this product classification.			0	unbounded
ASBIE	Product_ Classification. Applicable. Referenced_ Standard	Applicable Referenced Standard	The referenced standard that is applicable to this product classification.			0	1

ABIE/ BBIE/ ASBIE	Dictionary Entry Name	Short Name	Definition	TDED	Qualified Data Type UID	Occurrence MIN	Occurrence Max
ABIE	Product_ Security Tag. Details	Product Security Tag	A product tag device to provide protection from a peril such as theft.				
BBIE	Product_ Security Tag. Type. Code	Type Code	The code specifying the type of this product security tag.			0	1
BBIE	Product_ Security Tag. Location. Code	Location Code	The code specifying the location of this product security tag.			0	1
ABIE	Specified_ Period. Details	Period	A specified period of time.				
BBIE	Specified_ Period. Duration. Measure	Duration Measure	A measure of the length of time for this specified time period such as hours, days, weeks, months, years.			0	unbounded
BBIE	Specified_ Period. Inclusive. Indicator	Inclusive Indicator	The indication of whether or not the start and end dates are included in this specified period.			0	1
BBIE	Specified_ Period. Description. Text	Description	A textual description of this specified period of time.	(2118)		0	unbounded
BBIE	Specified_ Period. Start. Date Time	Start Date Time	The date, time, date time or other date time value for the start of this specified period of time.			0	1
BBIE	Specified_ Period. End. Date Time	End Date Time	The date, time, date time or other date time value for the end of this specified period of time.			0	1
BBIE	Specified_ Period. Complete. Date Time	Complete Date Time	The date, time, date time or other date time value for a complete specified period of time expressed as a specific month, a specific week, etc.			0	1
BBIE	Specified_ Period. Season. Code	Season Code	The code specifying the season for this specified period.			0	1
BBIE	Specified_ Period. Identification. Identifier	ID	The unique identifier of this specified period.			0	1

ABIE/ BBIE/ ASBIE	Dictionary Entry Name	Short Name	Definition	TDED	Qualified Data Type UID	Occurrence MIN	Occurrence Max
BBIE	Specified_Period. Name. Text	Name	A name, expressed as text, of this specified period.			0	unbounded
BBIE	Specified_Period. Sequence. Numeric	Sequence Number	A sequence number for this specified period.			0	1
BBIE	Specified_Period. Start Date Flexibility. Code	Start Date Flexibility Code	The code specifying the flexibility of the start date of this specified period.			0	1
BBIE	Specified_Period. Continuous. Indicator	Continuous Indicator	The indication of whether or not this specified period is continuous.			0	1
ABIE	Specified_Period. Details	Period	A specified period of time.				
BBIE	Specified_Period. Duration. Measure	Duration Measure	A measure of the length of time for this specified time period such as hours, days, weeks, months, years.			0	unbounded
BBIE	Specified_Period. Inclusive. Indicator	Inclusive Indicator	The indication of whether or not the start and end dates are included in this specified period.			0	1
BBIE	Specified_Period. Description. Text	Description	A textual description of this specified period of time.	(2118)		0	unbounded
BBIE	Specified_Period. Start. Date Time	Start Date Time	The date, time, date time or other date time value for the start of this specified period of time.			0	1
BBIE	Specified_Period. End. Date Time	End Date Time	The date, time, date time or other date time value for the end of this specified period of time.			0	1
BBIE	Specified_Period. Complete. Date Time	Complete Date Time	The date, time, date time or other date time value for a complete specified period of time expressed as a specific month, a specific week, etc.			0	1

ABIE/ BBIE/ ASBIE	Dictionary Entry Name	Short Name	Definition	TDED	Qualified Data Type UID	Occurrence MIN	Occurrence Max
BBIE	Specified_Period. Open. Indicator	Open Indicator	The indication of whether or not an entity is open during this specified period.			0	1
BBIE	Specified_Period. Season. Code	Season Code	The code specifying the season for this specified period.			0	1
BBIE	Specified_Period. Identification. Identifier	ID	The unique identifier of this specified period.			0	1
BBIE	Specified_Period. Name. Text	Name	A name, expressed as text, of this specified period.			0	unbounded
BBIE	Specified_Period. Sequence. Numeric	Sequence Number	A sequence number for this specified period.			0	1
BBIE	Specified_Period. Start Date Flexibility. Code	Start Date Flexibility Code	The code specifying the flexibility of the start date of this specified period.			0	1
BBIE	Specified_Period. Continuous. Indicator	Continuous Indicator	The indication of whether or not this specified period is continuous.			0	1
BBIE	Specified_Period. Purpose. Code	Purpose Code	The code specifying the purpose of this specified period.			0	1
ABIE	Supply Chain_Trade Transaction. Details	Supply Chain Trade Transaction	A group of supply chain trade line items, trade agreement, trade delivery and trade settlement details.				
ASBIE	Supply Chain_Trade Transaction. Applicable. Header_ Trade Agreement	Header Trade Agreement	A trade agreement header applicable to this supply chain trade transaction, such as payment or delivery terms.			0	1
ASBIE	Supply Chain_Trade Transaction. Included. Trade_ Product Group	Product Group	A product group included in this supply chain trade transaction.			0	unbounded
ASBIE	Supply Chain_Trade Transaction. Included. Supply Chain_Trade Line Item	Included Trade Line Item	A trade line item included in this supply chain trade transaction.			0	unbounded

ABIE/ BBIE/ ASBIE	Dictionary Entry Name	Short Name	Definition	TDED	Qualified Data Type UID	Occurrence MIN	Occurrence Max
ABIE	Supply Chain_ Trade Line Item. Details	Supply Chain Trade Line Item	A collection of information specific to an item being used or reported on for supply chain trade purposes.				
ASBIE	Supply Chain_ Trade Line Item. Associated. Document Line_ Document	Associated Document Line	The document line associated with this trade line item.			0	1
ASBIE	Supply Chain_ Trade Line Item. Specified. Line_ Trade Agreement	Line Trade Agreement	The line trade agreement specified for this supply chain trade line item.			0	1
ASBIE	Supply Chain_ Trade Line Item. Specified. Line_ Trade Delivery	Line Trade Delivery	The line trade delivery specified for this supply chain trade line item.			0	1
ASBIE	Supply Chain_ Trade Line Item. Specified. Line_ Trade Settlement	Line Trade Settlement	A line trade settlement specified for this supply chain trade line item.			0	1
ASBIE	Supply Chain_ Trade Line Item. Specified. Trade_ Product	Trade Product	The product specified for this supply chain trade line item.			1	1
ASBIE	Supply Chain_ Trade Line Item. Substitute_ Applicable. Referenced_ Product	Substitute Product	A referenced substitute product applicable for this supply chain trade line item.			0	unbounded
ASBIE	Supply Chain_ Trade Line Item. Accessory_ Applicable. Referenced_ Product	Accessory Product	A referenced accessory product applicable for this supply chain trade line item.			0	unbounded
ASBIE	Supply Chain_ Trade Line Item. Component_ Applicable. Referenced_ Product	Component Product	A referenced component product applicable for this supply chain trade line item.			0	unbounded
ASBIE	Supply Chain_ Trade Line Item. Complementary_ Applicable. Referenced_ Product	Complementary Product	A referenced complementary product applicable for this supply chain trade line item.			0	unbounded

ABIE/ BBIE/ ASBIE	Dictionary Entry Name	Short Name	Definition	TDED	Qualified Data Type UID	Occurrence MIN	Occurrence Max
ASBIE	Supply Chain_ Trade Line Item. Additional_ Applicable. Referenced_ Product	Additional Product	A referenced product additionally applicable with this supply chain trade line item.			0	unbounded
ASBIE	Supply Chain_ Trade Line Item. Required_ Applicable. Referenced_ Product	Required Product	A required product applicable for this supply chain trade line item.			0	unbounded
ABIE	Tax_ Registration. Details	Tax Registration	Registration with a specific tax authority.				
BBIE	Tax_ Registration. Identification. Identifier	ID	The unique identifier for this tax registration.			0	1
ASBIE	Tax_ Registration. Associated. Registered_ Tax	Registered Tax	The registered tax associated with this tax registration.			0	1
ABIE	Temperature Setting_ Instructions. Details	Temperature Setting Instructions	Temperature setting related information of an instructive nature.				
BBIE	Temperature Setting_ Instructions. Procedure. Text	Procedure Text	A procedure, expressed as text, for these temperature setting instructions.			0	unbounded
BBIE	Temperature Setting_ Instructions. Description. Text	Description	A textual description of these temperature setting instructions.	(4400)		0	unbounded
BBIE	Temperature Setting_ Instructions. Description. Code	Description Code	The code specifying a description of these temperature setting instructions.	(4401)		0	1
ABIE	Trade Product_ Feature. Details	Trade Product Feature	Distinctive or characteristic parts of a trade product.				
BBIE	Trade Product_ Feature. Identification. Identifier	ID	The unique identifier for this trade product feature.			0	1
BBIE	Trade Product_ Feature. Description. Text	Description	A textual description of this trade product feature.			0	unbounded
BBIE	Trade Product_ Feature. Name. Text	Name	A name, expressed as text, for this trade product feature.			0	unbounded

ABIE/ BBIE/ ASBIE	Dictionary Entry Name	Short Name	Definition	TDED	Qualified Data Type UID	Occurrence MIN	Occurrence Max
BBIE	Trade Product_ Feature. Type. Code	Type Code	The code specifying the type of trade product feature.			0	1
BBIE	Trade Product_ Feature. Marketing Phrase. Text	Marketing Phrase	A catch phrase, expressed as text, for marketing of this trade product feature.			0	unbounded
BBIE	Trade Product_ Feature. Marketing. Measure	Marketing Measure	A marketing measure for this trade product feature.			0	unbounded
ABIE	Trade_ Accounting Account. Details	Trade Accounting Account	A specific trade account for recording debits and credits to general accounting, cost accounting or budget accounting.				
BBIE	Trade_ Accounting Account. Identification. Identifier	ID	The unique identifier for this trade accounting account.			1	1
BBIE	Trade_ Accounting Account. Set Trigger. Code	Set Trigger Code	A code specifying a set trigger for this trade accounting account to be used in response to a specific event or a set of events.	(1001)	UN02000110	0	1
BBIE	Trade_ Accounting Account. Type. Code	Type Code	The code specifying the type of trade accounting account, such as general (main), secondary, cost accounting or budget account.		UN02000101	0	1
BBIE	Trade_ Accounting Account. Amount Type. Code	Amount Type Code	The code specifying the amount type for this trade accounting account.		UN02000102	0	1
BBIE	Trade_ Accounting Account. Name. Text	Name	The name, expressed as text, of this trade accounting account.			0	1
BBIE	Trade_ Accounting Account. Cost Reference Dimension Pattern. Text	Cost Reference Dimension Pattern Text	The cost reference dimension pattern, expressed as text, for this trade accounting account.			0	1

ABIE/ BBIE/ ASBIE	Dictionary Entry Name	Short Name	Definition	TDED	Qualified Data Type UID	Occurrence MIN	Occurrence Max
ABIE	Trade_ Address. Details	Trade Address	The location at which a particular trade related organization or person may be found or reached.				
BBIE	Trade_ Address. Identification. Identifier	ID	A unique identifier for this trade address.			0	1
BBIE	Trade_ Address. Postcode. Code	Postcode	A code specifying the postcode of this trade address.	(3251)		0	1
BBIE	Trade_ Address. Post Office Box. Text	Post Office Box	The unique identifier, expressed as text, of a container commonly referred to as a box, in a post office or other postal service location, assigned to a person or organization, where postal items may be kept for this trade address.	(3042)		0	1
BBIE	Trade_ Address. Building Name. Text	Building Name	The name, expressed as text, of a building, a house or other structure on a street at this trade address.			0	1
BBIE	Trade_ Address. Line One. Text	Line One	The first free form line, expressed as text, of this trade address.	(3286)		0	1
BBIE	Trade_ Address. Line Two. Text	Line Two	The second free form line, expressed as text, of this trade address.	(3286)		0	1
BBIE	Trade_ Address. Line Three. Text	Line Three	The third free form line, expressed as text, of this trade address.	(3286)		0	1
BBIE	Trade_ Address. Line Four. Text	Line Four	The fourth free form line, expressed as text, of this trade address.	(3286)		0	1
BBIE	Trade_ Address. Line Five. Text	Line Five	The fifth free form line, expressed as text, of this trade address.	(3286)		0	1
BBIE	Trade_ Address. Street Name. Text	Street Name	A name, expressed as text, of a street or thoroughfare for this trade address.			0	1

ABIE/ BBIE/ ASBIE	Dictionary Entry Name	Short Name	Definition	TDED	Qualified Data Type UID	Occurrence MIN	Occurrence Max
BBIE	Trade_ Address. City Name. Text	City Name	The name, expressed as text, of the city, town or village of this trade address.	(3164)		0	1
BBIE	Trade_ Address. City Sub-Division Name. Text	City Sub-Division Text	A name, expressed as text, of a sub-division of a city for this trade address, for example a district or borough.			0	1
BBIE	Trade_ Address. Country. Identifier	Country Code	The unique identifier of a country for this trade address.	[3207]	UN02000003	0	1
BBIE	Trade_ Address. Country Name. Text	Country Name	A name, expressed as text, of the country for this trade address.			0	unbounded
BBIE	Trade_ Address. Country Sub-Division. Identifier	Country Sub-Division Code	A unique identifier of the country sub-division for this trade address.	(3229)		0	1
BBIE	Trade_ Address. Country Sub-Division Name. Text	Country Sub-Division Name	A name, expressed as text, of the sub-division of a country for this trade address.	(3228)		0	unbounded
BBIE	Trade_ Address. Attention Of. Text	Attention Of	The name, expressed as text, of a person or department in the organization to whom incoming mail is marked with words such as 'for the attention of' or 'FAO' or 'ATTN' for this trade address.			0	1
BBIE	Trade_ Address. Care Of. Text	Care Of	The name, expressed as text, of a person or organization at this trade address to whom incoming mail is marked with words such as 'care of' or 'C/O'.			0	1
BBIE	Trade_ Address. Building Number. Text	Building Number	The building number, expressed as text, in this trade address.			0	1

ABIE/ BBIE/ ASBIE	Dictionary Entry Name	Short Name	Definition	TDED	Qualified Data Type UID	Occurrence MIN	Occurrence Max
BBIE	Trade_ Address. Additional_Street Name. Text	Additional Street Name	The additional name of a street, expressed as text, for this trade address.			0	1
BBIE	Trade_ Address. Department Name. Text	Department Name	The name, expressed as text, of a department for this trade address.			0	1
ABIE	Trade_ Allowance Charge. Details	Trade Allowance/Charge	A component of pricing, such as an allowance or charge for trade purposes.				
BBIE	Trade_ Allowance Charge. Charge. Indicator	Charge Indicator	The indication of whether or not the trade allowance charge is a charge.			0	1
BBIE	Trade_ Allowance Charge. Identification. Identifier	ID	The unique identifier for this trade allowance charge.	(1230)		0	1
BBIE	Trade_ Allowance Charge. Sequence. Numeric	Sequence Number	The sequence number for applying this trade allowance charge.			0	1
BBIE	Trade_ Allowance Charge. Calculation. Percent	Calculation Percent	The percentage applied to calculate this trade allowance charge.			0	1
BBIE	Trade_ Allowance Charge. Basis. Quantity	Basis Quantity	The quantity on which this trade allowance charge is based.			0	1
BBIE	Trade_ Allowance Charge. Prepaid. Indicator	Prepaid Indicator	The indication of whether or not this trade allowance charge is prepaid.			0	1
BBIE	Trade_ Allowance Charge. Actual. Amount	Actual Amount	An actual monetary value of the trade allowance charge.			0	unbounded
BBIE	Trade_ Allowance Charge. Reason. Code	Reason Code	The code specifying the reason for this trade allowance charge.	(4465)	UN02000118	0	1
BBIE	Trade_ Allowance Charge. Reason. Text	Reason Text	The reason, expressed as text, for this trade allowance charge.			0	1
BBIE	Trade_ Allowance Charge. Type. Code	Type Code	The code specifying the type of this trade allowance charge.	(5189)	UN02000134	0	1

ABIE/ BBIE/ ASBIE	Dictionary Entry Name	Short Name	Definition	TDED	Qualified Data Type UID	Occurrence MIN	Occurrence Max
BBIE	Trade_ Allowance Charge. Basis. Amount	Basis Amount	The monetary value that is the basis on which this trade allowance charge is calculated.			0	1
BBIE	Trade_ Allowance Charge. Unit_ Basis. Amount	Unit Basis Amount	The monetary value of the unit basis on which the allowance or charge is calculated.			0	1
ASBIE	Trade_ Allowance Charge. Category. Trade_ Tax	Tax Category	A tax category of this trade allowance charge.			0	unbounded
ASBIE	Trade_ Allowance Charge. Actual. Trade_ Currency Exchange	Actual Currency Exchange	The actual trade currency exchange for this trade allowance charge.			0	1
ABIE	Trade_ Contact. Details	Trade Contact	A person or a department that acts as a point of contact with another person or department in a trading relationship.				
BBIE	Trade_ Contact. Identification. Identifier	ID	The unique identifier for this trade contact.	(3413)		0	1
BBIE	Trade_ Contact. Person Name. Text	Person Name	The name, expressed as text, of this trade contact person.	(3412)		0	1
BBIE	Trade_ Contact. Department Name. Text	Department Name	The name, expressed as text, of the department to which this trade contact belongs within an organization.	(3412)		0	1
BBIE	Trade_ Contact. Type. Code	Type Code	The code specifying the type of trade contact.	(3139)	UN02000122	0	1
BBIE	Trade_ Contact. Job Title. Text	Job Title	The job title, position or designation, expressed as text, of this trade contact within an organization, such as Director, Software Engineer, Purchasing Manager.			0	1
BBIE	Trade_ Contact. Responsibility. Text	Responsibility Text	A responsibility, expressed as text, of this trade contact.			0	1

ABIE/ BBIE/ ASBIE	Dictionary Entry Name	Short Name	Definition	TDED	Qualified Data Type UID	Occurrence MIN	Occurrence Max
BBIE	Trade_Contact. Person_ Identification. Identifier	Person ID	A unique identifier for this trade contact person.	(3413)		0	unbounded
ASBIE	Trade_Contact. Telephone. Universal_ Communication	Telephone	Telephone communication information for this trade contact.			0	1
ASBIE	Trade_Contact. Direct_ Telephone. Universal_ Communication	Direct Telephone	The direct telephone communication information for this trade contact.			0	1
ASBIE	Trade_Contact. Mobile_ Telephone. Universal_ Communication	Mobile Telephone	The mobile telephone communication information for this trade contact.			0	1
ASBIE	Trade_Contact. Fax. Universal_ Communication	Fax	Fax communication information for this trade contact.			0	1
ASBIE	Trade_Contact. Email_ URI. Universal_ Communication	Email Address	The email URI communication information for this trade contact.			0	1
ASBIE	Trade_Contact. Telex. Universal_ Communication	Telex	Telegraphy (Telex) communication information for this trade contact.			0	1
ASBIE	Trade_Contact. VOIP. Universal_ Communication	VOIP	Voice Over Internet Protocol (VOIP) communication information for this trade contact.			0	1
ASBIE	Trade_Contact. Instant Messaging. Universal_ Communication	Instant Messaging	Instant messaging communication information for this trade contact.			0	1
ASBIE	Trade_Contact. Specified. Note	Note	A note specified for this trade contact.			0	unbounded
ASBIE	Trade_Contact. Specified. Contact_ Person	Person	The contact person specified for this trade contact.			0	1
ABIE	Trade_Country Sub-Division. Details	Trade Country Sub-Division	A political or physical area or region within the political boundaries of a country used or referenced for trade purposes.				

ABIE/ BBIE/ ASBIE	Dictionary Entry Name	Short Name	Definition	TDED	Qualified Data Type UID	Occurrence MIN	Occurrence Max
BBIE	Trade_Country Sub-Division. Identification. Identifier	ID	The unique identifier for this trade country sub-division.	(3229)		0	1
BBIE	Trade_Country Sub-Division. Name. Text	Name	A name, expressed as text, of this trade country sub-division.	(3228)		0	unbounded
ABIE	Trade_Country. Details	Trade Country	The area of land that belongs to a nation together with its properties, such as population, political organization, etc., used or referenced for trade purposes.				
BBIE	Trade_Country. Identification. Identifier	Code	A unique identifier for this trade country.	[3207]	UN02000003	0	1
BBIE	Trade_Country. Name. Text	Name	A name, expressed as text, of this trade country.	(3206)		0	unbounded
ASBIE	Trade_Country. Subordinate. Trade_Country Sub-Division	Sub-Division	A trade country sub-division that is subordinate to this trade country, such as a state, a county, a canton, a province.			0	unbounded
ABIE	Trade_Currency Exchange. Details	Trade Currency Exchange	The conversion of one currency to another for trade purposes.				
BBIE	Trade_Currency Exchange. Source Currency. Code	Source Currency Code	The code specifying the source currency of a trade related currency conversion.	[6345]	UN02000004	1	1
BBIE	Trade_Currency Exchange. Source Unit Basis. Numeric	Source Unit Basis	The numeric unit basis of the source currency used in this trade related currency exchange rate calculation.			0	1
BBIE	Trade_Currency Exchange. Target Currency. Code	Target Currency Code	The code specifying the target currency of a trade related currency conversion.	[6345]	UN02000004	1	1

ABIE/ BBIE/ ASBIE	Dictionary Entry Name	Short Name	Definition	TDED	Qualified Data Type UID	Occurrence MIN	Occurrence Max
BBIE	Trade_ Currency Exchange. Target Unit Base. Numeric	Target Unit Basis	The numeric unit basis of the target currency used in this trade related currency exchange rate calculation.			0	1
BBIE	Trade_ Currency Exchange. Market. Identifier	Market ID	The unique identifier of the currency exchange market from which the exchange rate is taken for trade purposes.	(6341)		0	1
BBIE	Trade_ Currency Exchange. Conversion. Rate	Conversion Rate	The rate factor used for conversion from the source currency to the target currency for trade purposes.	(5402)		1	1
BBIE	Trade_ Currency Exchange. Conversion Rate. Date Time	Conversion Rate Date Time	The date, time, date time or other date time value of the conversion rate for this trade related currency exchange.			0	1
ASBIE	Trade_ Currency Exchange. Associated. Referenced_ Document	Associated Document	An associated document referenced for this trade related currency exchange.			0	1
ABIE	Trade_ Delivery Terms. Details	Trade Delivery Terms	Conditions agreed upon between the parties with regard to the delivery of goods and or services for trade purposes.				
BBIE	Trade_ Delivery Terms. Delivery Type. Code	Code	The code specifying the type of delivery for these trade delivery terms.	(4053)	UN02000005	0	1
BBIE	Trade_ Delivery Terms. Description. Text	Description	A textual description of these trade delivery terms.	(4052)		0	unbounded
ASBIE	Trade_ Delivery Terms. Relevant. Trade_ Location	Relevant Location	The trade location relevant for these trade delivery terms.			0	1
ABIE	Trade_ Location. Details	Trade Location	A physical location or place used or referenced for trade purposes.				
BBIE	Trade_ Location. Country. Identifier	Country Code	The unique identifier of a country location used or referenced in trade.	[3207]	UN02000003	0	1

ABIE/ BBIE/ ASBIE	Dictionary Entry Name	Short Name	Definition	TDED	Qualified Data Type UID	Occurrence MIN	Occurrence Max
BBIE	Trade_ Location. Country Name. Text	Country Name	The name, expressed as text, of a country location used or referenced in trade.			0	1
BBIE	Trade_ Location. Identification. Identifier	ID	The unique identifier for this location used or referenced in trade.	(3225)		0	1
BBIE	Trade_ Location. Name. Text	Name	The name, expressed as text, of this location used or referenced in trade.	(3224)		0	1
ABIE	Trade_ Party. Details	Trade Party	An individual, a group, or a body having a role in a trade business function.				
BBIE	Trade_ Party. Identification. Identifier	ID	A unique identifier of this trade party.	(3039)		0	unbounded
BBIE	Trade_ Party. Global_ Identification. Identifier	Global ID	A globally unique identifier of this trade party.	(3039)		0	unbounded
BBIE	Trade_ Party. Name. Text	Name	The name, expressed as text, for this trade party.	(3036)		0	1
BBIE	Trade_ Party. Role. Code	Role Code	A code specifying the role of this trade party.	(3035)	UN02000044	0	unbounded
BBIE	Trade_ Party. Description. Text	Description	A textual description of this trade party.			0	unbounded
ASBIE	Trade_ Party. Specified. Legal_ Organization	Legal Organization	The legally constituted organization specified for this trade party.			0	1
ASBIE	Trade_ Party. Defined. Trade_ Contact	Defined Contact Details	A trade contact defined for this trade party.			0	unbounded
ASBIE	Trade_ Party. Postal. Trade_ Address	Postal Address	The postal address for this trade party.			0	1
ASBIE	Trade_ Party. URI. Universal_ Communication	URI	A Uniform Resource Identifier (URI) communication for this trade party, such as a web or email address.			0	unbounded
ASBIE	Trade_ Party. Specified. Tax_ Registration	Tax Registration	A tax registration specified for this trade party.			0	unbounded

ABIE/ BBIE/ ASBIE	Dictionary Entry Name	Short Name	Definition	TDED	Qualified Data Type UID	Occurrence MIN	Occurrence Max
ASBIE	Trade_ Party. End Point_ URI. Universal_ Communication	End Point URI	The communication address of the end point URI for this trade party.			0	1
ASBIE	Trade_ Party. Logo_ Associated. Specified_ Binary File	Logo Binary File	A file containing a specified binary representation of a logo associated with this trade party.			0	unbounded
ABIE	Trade_ Payment Discount Terms. Details	Trade Payment Discount Terms	Trade terms and conditions by which a discount is or can be applied to a payable amount.				
BBIE	Trade_ Payment Discount Terms. Basis. Date Time	Basis Date Time	The date, time, date time, or other date time value used as the basis to calculate the discount in the trade payment discount terms.			0	1
BBIE	Trade_ Payment Discount Terms. Basis Period. Measure	Basis Period Measure	The measure of the basis period for these trade payment discount terms.			0	1
BBIE	Trade_ Payment Discount Terms. Basis. Amount	Basis Amount	A monetary value used as a basis to calculate the discount in these trade payment discount terms.			0	1
BBIE	Trade_ Payment Discount Terms. Calculation. Percent	Calculation Percent	The percent used to calculate the discount in these trade payment discount terms.	(5056)		0	1
BBIE	Trade_ Payment Discount Terms. Actual Discount. Amount	Actual Discount Amount	A monetary value of the actual discount in these trade payment discount terms.			0	1
ABIE	Trade_ Payment Penalty Terms. Details	Trade Payment Penalty Terms	Trade terms and conditions by which a penalty is or can be applied to a payable amount.				
BBIE	Trade_ Payment Penalty Terms. Basis. Date Time	Basis Date Time	The date, time, date time, or other date time value used as the basis to calculate these trade payment penalty terms.			0	1

ABIE/ BBIE/ ASBIE	Dictionary Entry Name	Short Name	Definition	TDED	Qualified Data Type UID	Occurrence MIN	Occurrence Max
BBIE	Trade_ Payment Penalty Terms. Basis Period. Measure	Basis Period Measure	The measure of the period used as a basis to calculate these trade payment penalty terms.			0	1
BBIE	Trade_ Payment Penalty Terms. Basis. Amount	Basis Amount	A monetary value used as a basis to calculate these trade payment penalty terms.			0	1
BBIE	Trade_ Payment Penalty Terms. Calculation. Percent	Calculation Percent	The percent applied to calculate these trade payment penalty terms.			0	1
BBIE	Trade_ Payment Penalty Terms. Actual Penalty. Amount	Actual Penalty Amount	A monetary value of the actual penalty in these trade payment penalty terms.			0	1
ABIE	Trade_ Payment Terms. Details	Trade Payment Terms	Terms and conditions by which payment has been or will be made for trade purposes.				
BBIE	Trade_ Payment Terms. Identification. Identifier	ID	The unique identifier of these trade payment terms.	(4277)	UN02000012	0	1
BBIE	Trade_ Payment Terms. From Event. Code	From Event Code	The code specifying the event from which these trade payment terms are offered for a length of time.	(2475)	UN02000008	0	1
BBIE	Trade_ Payment Terms. Settlement Period. Measure	Settlement Period Measure	The measure of the number of settlement periods from this trade payment term time reference to the latest payment date, such as 30 days, 3 months.			0	1
BBIE	Trade_ Payment Terms. Description. Text	Description	A textual description of these trade payment terms.	(4276)		0	unbounded
BBIE	Trade_ Payment Terms. Due Date. Date Time	Deprecated Due Date Date Time	The date, time, date time, or other date time value for a due date specified by these trade payment terms.			0	1

ABIE/ BBIE/ ASBIE	Dictionary Entry Name	Short Name	Definition	TDED	Qualified Data Type UID	Occurrence MIN	Occurrence Max
BBIE	Trade_ Payment Terms. Instruction_ Type. Code	Instruction Type Code	A code specifying a type of instruction for these trade payment terms.	(4279)		0	1
BBIE	Trade_ Payment Terms. Payment Means_ Identification. Identifier	Payment Means ID	An identifier of a payment means in these trade payment terms.	(4277)		0	unbounded
BBIE	Trade_ Payment Terms. Partial Payment. Percent	Partial Payment Percent	A partial payment, expressed as a percent, in these trade payment terms.			0	1
BBIE	Trade_ Payment Terms. Direct Debit Mandate_ Identification. Identifier	Direct Debit Mandate ID	An identifier of a direct debit mandate in these trade payment terms.	(4277)		0	unbounded
BBIE	Trade_ Payment Terms. Type. Code	Type Code	A code specifying the type of trade payment terms.	(4279)	UN02000083	0	1
BBIE	Trade_ Payment Terms. Partial Payment. Amount	Partial Payment Amount	A monetary value of a partial payment in these trade payment terms.			0	unbounded
ASBIE	Trade_ Payment Terms. Applicable. Trade_ Payment Penalty Terms	Payment Penalty Terms	Trade payment penalty terms applicable to these trade payment terms.			0	1
ASBIE	Trade_ Payment Terms. Applicable. Trade_ Payment Discount Terms	Payment Discount Terms	Trade payment discount terms applicable to these trade payment terms.			0	1
ASBIE	Trade_ Payment Terms. Payee. Trade_ Party	Payee	A payee party in these trade payment terms.			0	unbounded
ABIE	Trade_ Price. Details	Trade Price	A sum of money for which something is or may be bought or sold for trade purposes.				
BBIE	Trade_ Price. Type. Code	Type Code	The code specifying the type of trade price.	(5375)	UN02000013	0	1
BBIE	Trade_ Price. Charge. Amount	Charge Amount	A monetary value of the trade price charge.			1	unbounded

ABIE/ BBIE/ ASBIE	Dictionary Entry Name	Short Name	Definition	TDED	Qualified Data Type UID	Occurrence MIN	Occurrence Max
BBIE	Trade_ Price. Basis. Quantity	Basis Quantity	The quantity on which the trade price is based.	(5310)		0	1
BBIE	Trade_ Price. Order_ Unit Conversion Factor. Numeric	Order Unit Conversion Factor	The value used as the factor to convert the order unit into the price unit for this trade price.	(5394)		0	1
BBIE	Trade_ Price. Change Reason. Text	Change Reason Text	A reason, expressed as text, for a change of this trade price.			0	unbounded
BBIE	Trade_ Price. Minimum. Quantity	Minimum Quantity	The minimum quantity in a range for which this trade price applies.			0	1
BBIE	Trade_ Price. Maximum. Quantity	Maximum Quantity	The maximum quantity in a range for which the trade price applies.			0	1
ASBIE	Trade_ Price. Applied. Trade_ Allowance Charge	Applied Allowance/Charge	An allowance or charge applied to the trade price.			0	unbounded
ASBIE	Trade_ Price. Validity. Specified_ Period	Validity Period	A specified period for which this trade price is valid.			0	1
ASBIE	Trade_ Price. Associated. Referenced_ Document	Associated Document	An associated document referenced for this trade price.			0	unbounded
ASBIE	Trade_ Price. Delivery. Trade_ Location	Delivery Location	A delivery location for this trade price.			0	unbounded
ASBIE	Trade_ Price. Trade_ Comparison. Reference_ Price	Trade Comparison Price	A price that provides a trade comparison with this trade price.			0	unbounded
ABIE	Trade_ Product Group. Details	Trade Product Group	A grouping of trade products.				
BBIE	Trade_ Product Group. Identification. Identifier	ID	An identifier for this trade product group.			0	1
BBIE	Trade_ Product Group. Name. Text	Name	The name, expressed as text, for this trade product group.			0	1
ASBIE	Trade_ Product Group. Included. Supply Chain_ Trade Line Item	Included Trade Line Item	A supply chain trade line item which is included in this trade product group.			0	unbounded

ABIE/ BBIE/ ASBIE	Dictionary Entry Name	Short Name	Definition	TDED	Qualified Data Type UID	Occurrence MIN	Occurrence Max
ABIE	Trade Product_ Certification. Details	Trade Product Certification	The process of certifying that a certain product has passed performance and quality assurance tests, or qualification requirements stipulated in regulations.				
BBIE	Trade Product_ Certification. Assertion. Code	Assertion Code	A code specifying an assertion for this trade product certification, such as claims that a product is free from peanuts.			0	unbounded
BBIE	Trade Product_ Certification. Responsible Agency. Text	Responsible Agency Text	The agency, expressed as text, responsible for this trade product certification.			0	1
BBIE	Trade Product_ Certification. Assertion. Text	Assertion Text	An assertion, expressed as text, for this trade product certification, such as that this product is free from peanuts.			0	unbounded
BBIE	Trade Product_ Certification. Standard. Text	Standard Text	The standard, expressed as text, for this trade product certification.			0	1
ABIE	Trade_ Product Instance. Details	Trade Product Instance	An individual trade product or batch of similar trade products produced by human or mechanical effort or by a natural process.				
BBIE	Trade_ Product Instance. Global Serial_ Identification. Identifier	Global Serial ID	The unique global serial identifier for this trade product instance.			0	1
BBIE	Trade_ Product Instance. Batch_ Identification. Identifier	Batch ID	The unique batch identifier for this trade product instance.			0	1
BBIE	Trade_ Product Instance. Kanban_ Identification. Identifier	Kanban ID	The unique kanban identifier for this trade product instance.			0	1
BBIE	Trade_ Product Instance. Supplier Assigned Serial_ Identification. Identifier	Supplier Assigned Serial ID	The unique supplier assigned serial identifier for this trade product instance.			0	1

ABIE/ BBIE/ ASBIE	Dictionary Entry Name	Short Name	Definition	TDED	Qualified Data Type UID	Occurrence MIN	Occurrence Max
BBIE	Trade_ Product Instance. Best Before. Date Time	Best Before Date Time	The date, time, date time, or other date time value before which it is best to consume the items contained in this trade product instance.	(2497)		0	1
BBIE	Trade_ Product Instance. Expiry. Date Time	Expiry Date Time	The date, time, date time, or other date time value of expiry of the items contained in the trade product instance.			0	1
BBIE	Trade_ Product Instance. Sell By. Date Time	Sell By Date Time	The date, time, date time, or other date time value by after which the items contained in the trade product instance should not be sold.			0	1
BBIE	Trade_ Product Instance. Serial_ Identification. Identifier	Serial ID	A unique serial identifier for this trade product instance.			0	unbounded
BBIE	Trade_ Product Instance. Registration_ Identification. Identifier	Registration ID	A unique registration identifier, such as a vehicle licence plate identification, for this trade product instance.			0	unbounded
ASBIE	Trade_ Product Instance. Applicable. Product_ Characteristic	Product Characteristic	A product characteristic applicable to this trade product instance.			0	unbounded
ASBIE	Trade_ Product Instance. Production. Supply Chain_ Event	Production Event	The production event for this trade product instance.			0	1
ASBIE	Trade_ Product Instance. Packaging. Supply Chain_ Event	Packaging Event	The packaging event for this trade product instance.			0	1
ASBIE	Trade_ Product Instance. Applicable. Material_ Goods Characteristic	Material Goods Characteristic	A distinguishing material feature applicable to this trade product instance.			0	unbounded
ASBIE	Trade_ Product. Individual. Trade_ Product Instance	Individual Product Instance	An individual instance of this trade product.			0	unbounded

ABIE/ BBIE/ ASBIE	Dictionary Entry Name	Short Name	Definition	TDED	Qualified Data Type UID	Occurrence MIN	Occurrence Max
ABIE	Trade_ Product. Details	Trade Product	Any tangible output or service produced by human or mechanical effort or by a natural process for trade purposes.				
BBIE	Trade_ Product. Identification. Identifier	ID	A unique identifier for this trade product.	(7135)		0	unbounded
BBIE	Trade_ Product. Global Identification. Identifier	Global ID	A unique global identifier for this trade product.	(7135)		0	unbounded
BBIE	Trade_ Product. Seller Assigned_ Identification. Identifier	Seller Assigned ID	The unique seller assigned identifier for this trade product.	(7135)		0	1
BBIE	Trade_ Product. Buyer Assigned_ Identification. Identifier	Buyer Assigned ID	The unique buyer assigned identifier for this trade product.	(7135)		0	1
BBIE	Trade_ Product. Manufacturer Assigned_ Identification. Identifier	Manufacturer Assigned ID	A unique manufacturer assigned identifier for this trade product.	(7135)		0	unbounded
BBIE	Trade_ Product. Industry Assigned_ Identification. Identifier	Industry Assigned ID	A unique industry assigned identifier for this product.	(7135)		0	unbounded
BBIE	Trade_ Product. Tracking System. Identifier	Tracking System ID	An identifier for a tracking system of this trade product.			0	unbounded
BBIE	Trade_ Product. Name. Text	Name	A name, expressed as text, for this trade product.	(7134)		0	unbounded
BBIE	Trade_ Product. Gross Weight. Measure	Gross Weight	A measure of the gross weight (mass) of this trade product.			0	unbounded
BBIE	Trade_ Product. Drained_ Net Weight. Measure	Drained Net Weight	The measure of the drained net weight (mass) of this trade product.			0	1
BBIE	Trade_ Product. From Opening_ Life Span. Measure	From Opening Life Span Measure	The measure of the life span of this trade product from date of opening.	(6411)	UN02000026	0	1

ABIE/ BBIE/ ASBIE	Dictionary Entry Name	Short Name	Definition	TDED	Qualified Data Type UID	Occurrence MIN	Occurrence Max
BBIE	Trade_ Product. From Delivery_ Life Span. Measure	From Delivery Life Span Measure	The measure of the life span of this trade product from date of delivery.	(6411)	UN02000026	0	1
BBIE	Trade_ Product. Area Density. Measure	Area Density Measure	The measure of the area density, such as paper density 100 gsm, of this trade product.			0	1
BBIE	Trade_ Product. From Production_ Life Span. Measure	From Production Life Span Measure	The measure of the life span of this trade product from date of production.	(6411)	UN02000026	0	1
BBIE	Trade_ Product. Unit_ Type. Code	Unit Type Code	A code specifying a type of unit for this trade product.			0	unbounded
BBIE	Trade_ Product. Production Discontinued. Date Time	Production Discontinued Date Time	The date, time, date time, or other date time value of the discontinuation of the production of this trade product.			0	1
BBIE	Trade_ Product. Formatted Cancellation_ Announced Launch. Date Time	Announced Launch Cancellation Formatted Date Time	The formatted date, time, date time, or other date time value of the cancellation of the announced launch of this trade product.	(2379)	UN02000153	0	1
BBIE	Trade_ Product. Batch_ Identification. Identifier	Batch ID	A batch identifier for this trade product.	(7135)		0	unbounded
BBIE	Trade_ Product. Formatted Latest_ Product Data Change. Date Time	Latest Product Data Change Formatted Date Time	The formatted date, time, date time, or other date time value of the latest change in the product data for this trade product.	(2379)	UN02000153	0	1
BBIE	Trade_ Product. Function_ Description. Text	Function Description	A textual description of a function for this trade product.			0	unbounded
BBIE	Trade_ Product. Concise_ Description. Text	Concise Description	A concise textual description for this trade product, such as the description used on a shelf or printed on a receipt.			0	unbounded
BBIE	Trade_ Product. Variant_ Description. Text	Variant Description	A textual description of a variant of this trade product.			0	unbounded

ABIE/ BBIE/ ASBIE	Dictionary Entry Name	Short Name	Definition	TDED	Qualified Data Type UID	Occurrence MIN	Occurrence Max
BBIE	Trade_ Product. Additional_ Description. Text	Additional Description	An additional textual description for this trade product.			0	unbounded
BBIE	Trade_ Product. Physical Form_ Description. Text	Physical Form Description	A textual description of the physical form of this trade product.			0	unbounded
BBIE	Trade_ Product. Brand_ Name. Text	Brand Name	The brand name, expressed as text, for this trade product.	(7134)		0	1
BBIE	Trade_ Product. Sub-Brand_ Name. Text	Sub-Brand Name	The sub-brand name, expressed as text, for this trade product.	(7134)		0	1
BBIE	Trade_ Product. Common_ Name. Text	Common Name	A common name, expressed as text, for this trade product.	(7134)		0	1
BBIE	Trade_ Product. Scientific_ Name. Text	Scientific Name	A scientific name, expressed as text, for this trade product.	(7134)		0	1
BBIE	Trade_ Product. Content_ Variable Measure. Indicator	Content Variable Measure Indicator	The indication of whether or not instances of this trade product have a content variable measure, such as weight, length or volume.			0	1
BBIE	Trade_ Product. Configurable. Indicator	Configurable Indicator	The indication of whether or not this trade product is configurable.			0	1
BBIE	Trade_ Product. Marked_ Serial Number. Indicator	Serial Number Marked Indicator	The indication of whether or not this trade product is marked with a serial number.			0	1
BBIE	Trade_ Product. Pre-Packaged. Indicator	Pre-Packaged Indicator	The indication of whether or not this trade product is pre-packaged.			0	1
BBIE	Trade_ Product. Colour. Code	Colour Code	The code specifying the colour for this trade product.			0	1
BBIE	Trade_ Product. Colour_ Description. Text	Colour Description	A textual description of the colour of this trade product.			0	unbounded
BBIE	Trade_ Product. Content_ Unit. Quantity	Content Unit Quantity	The number of content units of this trade product.			0	1

ABIE/ BBIE/ ASBIE	Dictionary Entry Name	Short Name	Definition	TDED	Qualified Data Type UID	Occurrence MIN	Occurrence Max
BBIE	Trade_ Product. Inner Pack Content_ Unit. Quantity	Inner Pack Content Unit Quantity	The number of content units in an inner pack of this trade product.			0	1
BBIE	Trade_ Product. Inner Pack. Quantity	Inner Pack Quantity	The number of inner packs of this trade product.			0	1
BBIE	Trade_ Product. Included Product Content_ Unit. Quantity	Included Product Content Unit Quantity	The number of content units of products included in this trade product.			0	1
BBIE	Trade_ Product. Included Product Type. Quantity	Included Product Type Quantity	The number of different product types included at the next lower level in this trade product.			0	1
BBIE	Trade_ Product. Promotional Variant_ Identification. Identifier	Promotional Variant ID	The promotional variant identifier for this trade product.	(7135)		0	1
BBIE	Trade_ Product. Consumer Age_ Description. Text	Consumer Age Description	A consumer age description, expressed as text, for this trade product.			0	unbounded
BBIE	Trade_ Product. Consumer Gender_ Description. Text	Consumer Gender Description	A consumer gender description, expressed as text, for this trade product.			0	unbounded
BBIE	Trade_ Product. Marketing_ Description. Text	Marketing Description	A marketing description, expressed as text, for this trade product.			0	unbounded
BBIE	Trade_ Product. Season_ Description. Text	Season Description	A season description, expressed as text, for this trade product.			0	unbounded
BBIE	Trade_ Product. Size_ Description. Text	Size Description	A size description, expressed as text, for this trade product.			0	unbounded
BBIE	Trade_ Product. Brand Range_ Name. Text	Brand Range Name	The brand range name, expressed as text, for this trade product.	(7134)		0	1
BBIE	Trade_ Product. Model_ Name. Text	Model Name	The model name, expressed as text, for this trade product.	(7134)		0	1
BBIE	Trade_ Product. Season. Code	Season Code	A code specifying a season for this trade product.			0	unbounded

ABIE/ BBIE/ ASBIE	Dictionary Entry Name	Short Name	Definition	TDED	Qualified Data Type UID	Occurrence MIN	Occurrence Max
BBIE	Trade_ Product. Regulation Conformity. Identifier	Regulation Conformity ID	An identifier assigned to indicate conformity with a regulation or standard for this trade product, such as "CE" which declares that the product conforms with the essential requirements of the applicable EC directives.			0	unbounded
ASBIE	Trade_ Product. Manufacturer. Trade_ Party	Manufacturer	A manufacturer party for this trade product.			0	unbounded
ASBIE	Trade_ Product. Legal Rights Owner. Trade_ Party	Legal Rights Owner	The party that owns the legal rights for this trade product.			0	1
ASBIE	Trade_ Product. Brand Owner. Trade_ Party	Brand Owner	The party that owns the brand of this trade product.			0	1
ASBIE	Trade_ Product. Applicable. Product_ Characteristic	Characteristic	A characteristic applicable to this trade product.			0	unbounded
ASBIE	Trade_ Product. Applicable. Material_ Goods Characteristic	Material Goods Characteristic	A material goods characteristic applicable to this trade product.			0	unbounded
ASBIE	Trade_ Product. Designated. Product_ Classification	Classification	A product classification designated for this trade product.			0	unbounded
ASBIE	Trade_ Product. Individual. Trade_ Product Instance	Individual Product Instance	An individual instance of this trade product.			0	unbounded
ASBIE	Trade_ Product. Included. Referenced_ Product	Included Product	An included product referenced from this trade product.			0	unbounded
ASBIE	Trade_ Product. Origin. Trade_ Country	Origin Country	A country of origin for this trade product.			0	unbounded
ASBIE	Trade_ Product. Supplied From. Trade_ Country	Supplied From Country	A country of supply for this trade product.			0	unbounded
ASBIE	Trade_ Product. Final_ Assembly. Trade_ Country	Final Assembly Country	A final assembly country for this trade product.			0	unbounded

ABIE/ BBIE/ ASBIE	Dictionary Entry Name	Short Name	Definition	TDED	Qualified Data Type UID	Occurrence MIN	Occurrence Max
ASBIE	Trade_Product.Linear.Spatial_Dimension	Dimensions	Linear spatial dimensions of this trade product.			0	unbounded
ASBIE	Trade_Product.Minimum_Linear.Spatial_Dimension	Minimum Dimensions	Minimum linear spatial dimensions of this trade product.			0	unbounded
ASBIE	Trade_Product.Maximum_Linear.Spatial_Dimension	Maximum Dimensions	Maximum linear spatial dimensions of this trade product.			0	unbounded
ASBIE	Trade_Product.Applicable.Supply Chain_Packaging	Packaging	Packaging applicable for use with this trade product.			0	unbounded
ASBIE	Trade_Product.Marketing Campaign_Reference.Referenced_Document	Marketing Campaign Document	A referenced marketing campaign document for this trade product.			0	unbounded
ASBIE	Trade_Product.Presentation.Specified_Binary File	Presentation Binary File	A binary file presentation specified for this trade product.			0	unbounded
ASBIE	Trade_Product.Applicable.Keyword	Keyword	A keyword applicable to this trade product.			0	unbounded
ASBIE	Trade_Product.Attached.Product_Security Tag	Attached Security Tag	A tag device attached to this trade product to provide protection from a peril such as theft.			0	unbounded
ASBIE	Trade_Product.Marketing.Trade Product_Feature	Marketing Product Feature	A marketing feature of this trade product.			0	unbounded
ASBIE	Trade_Product.MSDS_Reference.Referenced_Document	MSDS Document	A Material Safety Data Sheet (MSDS) document referenced for this product.			0	unbounded
ASBIE	Trade_Product.Additional_Reference.Referenced_Document	Additional Document	An additional referenced document for this trade product, such as a manual or a certificate.			0	unbounded
ASBIE	Trade_Product.Information.Note	Information Note	An information note for this trade product.			0	unbounded
ASBIE	Trade_Product.Applicable.Trade Product_Certification	Certification	A certification applicable to this trade product.			0	unbounded

ABIE/ BBIE/ ASBIE	Dictionary Entry Name	Short Name	Definition	TDED	Qualified Data Type UID	Occurrence MIN	Occurrence Max
ASBIE	Trade_ Product. Applicable. Disposal_ Instructions	Disposal Instructions	Disposal instructions applicable to this trade product.			0	unbounded
ABIE	Supply Chain_ Packaging. Details	Supply Chain Packaging	Any material with which supply chain goods are packaged, such as a box or bubble wrap.				
BBIE	Supply Chain_ Packaging. Customer Facing_ Total Unit. Quantity	Customer Facing Total Unit Quantity	The total number of units of this supply chain packaging facing the customer, such as would be seen when this packaging is placed on a retail shelf.			0	1
BBIE	Supply Chain_ Packaging. Total Unit. Quantity	Total Unit Quantity	A total number of units contained in this supply chain packaging.			0	unbounded
BBIE	Supply Chain_ Packaging. Layer_ Total Unit. Quantity	Layer Total Unit Quantity	The total number of units in a layer of this supply chain packaging.			0	1
BBIE	Supply Chain_ Packaging. Returnable. Indicator	Returnable Indicator	The indication of whether or not this supply chain packaging is returnable.			0	1
BBIE	Supply Chain_ Packaging. Type. Code	Type Code	The code specifying the type of supply chain packaging.	(7065)	UN02000043	0	1
ASBIE	Supply Chain_ Packaging. Linear. Spatial_ Dimension	Dimensions	The linear spatial dimensions of this supply chain packaging.			0	1
ASBIE	Supply Chain_ Packaging. Specified. Packaging_ Marking	Marking	A marking specified for this supply chain packaging, such as an inscription, stamp or label to indicate date, ownership, quality, manufacture or origin.			0	unbounded
ASBIE	Supply Chain_ Packaging. Applicable. Material_ Goods Characteristic	Goods Characteristic	Material goods characteristic applicable to this supply chain packaging.			0	unbounded
ASBIE	Supply Chain_ Packaging. Applicable. Disposal_ Instructions	Disposal Instructions	Disposal instructions for this supply chain packaging.			0	unbounded

ABIE/ BBIE/ ASBIE	Dictionary Entry Name	Short Name	Definition	TDED	Qualified Data Type UID	Occurrence MIN	Occurrence Max
ASBIE	Supply Chain_ Packaging. Applicable. Returnable Asset_ Instructions	Returnable Asset Instructions	Returnable asset instructions for this supply chain packaging.			0	unbounded
ABIE	Trade_ Tax. Details	Trade Tax	A trade related fiscal levy or duty.				
BBIE	Trade_ Tax. Calculated. Amount	Calculated Amount	A monetary value resulting from the calculation of this trade related tax, levy or duty.			0	unbounded
BBIE	Trade_ Tax. Type. Code	Type Code	The code specifying the type of trade related tax, levy or duty, such as a code for a Value Added Tax (VAT) [Reference United Nations Code List (UNCL) 5153].	(5153)	UN02000015	0	1
BBIE	Trade_ Tax. Exemption Reason. Text	Exemption Reason Text	The reason, expressed as text, for exemption from this trade related tax, levy or duty.			0	1
BBIE	Trade_ Tax. Calculated. Rate	Calculated Rate	The rate used to calculate the amount of this trade related tax, levy or duty.			0	1
BBIE	Trade_ Tax. Calculation Sequence. Numeric	Calculation Sequence Number	A numeric expression of the sequence in which this trade related tax is to be or has been applied when multiple taxes are applicable per calculation, such as first "Value Added Tax (VAT)", second "Transfer".			0	1
BBIE	Trade_ Tax. Basis. Quantity	Basis Quantity	The quantity used as the basis for calculating the amount of this trade related tax, levy or duty.			0	1
BBIE	Trade_ Tax. Basis. Amount	Basis Amount	A monetary value used as the basis on which this trade related tax, levy or duty is calculated.			0	unbounded

ABIE/ BBIE/ ASBIE	Dictionary Entry Name	Short Name	Definition	TDED	Qualified Data Type UID	Occurrence MIN	Occurrence Max
BBIE	Trade_ Tax. Unit_ Basis. Amount	Unit Basis Amount	A monetary value that constitutes the per unit basis on which this trade related tax, levy or duty is calculated.			0	unbounded
BBIE	Trade_ Tax. Category. Code	Category Code	The code specifying the category to which this trade related tax, levy or duty applies, such as codes for "Exempt from Tax", "Standard Rate", "Free Export Item - Tax Not Charged" [Reference United Nations Code List (UNCL) 5305].	(5305)	UN02000014	0	1
BBIE	Trade_ Tax. Currency. Code	Currency Code	The code specifying the currency for this trade related tax, levy or duty [UNCL 6345].	[6345]	UN02000004	0	1
BBIE	Trade_ Tax. Jurisdiction. Text	Jurisdiction Text	A jurisdiction, expressed as text, to which this trade related tax, levy or duty applies.			0	unbounded
BBIE	Trade_ Tax. Customs Duty. Indicator	Customs Duty Indicator	The indication of whether or not this trade related tax, levy or duty is a customs duty.			0	1
BBIE	Trade_ Tax. Exemption Reason. Code	Exemption Reason Code	A code specifying a reason for exemption from this trade related tax, levy or duty.			0	1
BBIE	Trade_ Tax. Tax Basis Allowance. Rate	Basis Allowance Rate	The rate of the tax basis allowance (deduction or discount) used to calculate the trade related tax, levy or duty.			0	1
BBIE	Trade_ Tax. Tax Point. Date	Tax Point Date	The date of the tax point when this trade related tax, levy or duty becomes applicable.			0	1

ABIE/ BBIE/ ASBIE	Dictionary Entry Name	Short Name	Definition	TDED	Qualified Data Type UID	Occurrence MIN	Occurrence Max
BBIE	Trade_ Tax. Type. Text	Type Text	The type, expressed as text, of this trade related tax, levy or duty.	(5152)		0	1
BBIE	Trade_ Tax. Information. Amount	Information Amount	A monetary value of an amount being reported for information for this trade related tax, levy or duty.			0	unbounded
BBIE	Trade_ Tax. Category Name. Text	Category Name	A category name, expressed as text, of this trade related tax, levy or duty.			0	unbounded
BBIE	Trade_ Tax. Due Date Type. Code	Due Date Type Code	The code specifying a type of due date for this trade tax.	(5307)	UN02000016	0	1
BBIE	Trade_ Tax. Rate_ Applicable. Percent	Applicable Rate Percent	The applicable rate, expressed as a percentage, for this trade tax, levy or duty.	(5510)		0	1
ASBIE	Trade_ Tax. Specified. Trade_ Accounting Account	Trade Accounting Account	A specified accounting account for this trade related tax, levy or duty.			0	unbounded
ASBIE	Trade_ Tax. Buyer Deductible Tax_ Specified. Trade_ Accounting Account	Buyer Deductible Tax Accounting Account	The buyer deductible tax specified accounting account for this trade related tax, levy or duty.			0	1
ASBIE	Trade_ Tax. Buyer Non-Deductible Tax_ Specified. Trade_ Accounting Account	Buyer Non-Deductible Tax Accounting Account	The buyer non-deductible tax specified accounting account for this trade related tax, levy or duty.			0	1
ASBIE	Trade_ Tax. Buyer Repayable Tax_ Specified. Trade_ Accounting Account	Buyer Repayable Tax Accounting Account	The buyer repayable tax specified accounting account for this trade related tax, levy or duty.			0	1
ASBIE	Trade_ Tax. Seller Payable Tax_ Specified. Trade_ Accounting Account	Seller Payable Tax Accounting Account	The seller payable tax specified accounting account for this trade related tax, levy or duty.			0	1
ASBIE	Trade_ Tax. Seller Refundable Tax_ Specified. Trade_ Accounting Account	Seller Refundable Tax Accounting Account	The seller refundable tax specified accounting account for this trade related tax, levy or duty.			0	1

ABIE/ BBIE/ ASBIE	Dictionary Entry Name	Short Name	Definition	TDED	Qualified Data Type UID	Occurrence MIN	Occurrence Max
ASBIE	Trade_ Tax. Service Supply. Trade_ Country	Service Supply Country	The country or country sub-division where a service was supplied for this trade tax.			0	1
ASBIE	Trade_ Tax. Place_ Applicable. Trade_ Location	Applicable Location	A location where this trade tax is applicable.			0	unbounded
ABIE	Transport_ Dangerous Goods. Details	Transport Dangerous Goods	Goods which may contain a substance which poses risks to people and/or the environment during transportation which is regulated by dangerous goods regulations.				
BBIE	Transport_ Dangerous Goods. UNDG Identification. Code	UNDG ID	The code specifying the unique United Nations Dangerous Goods (UNDG) number assigned to these transported dangerous goods.	(7124)		0	1
BBIE	Transport_ Dangerous Goods. Regulation. Code	Regulation Code	The code specifying a regulation applicable to these transported dangerous goods.	(8273)	UN02000070	0	1
BBIE	Transport_ Dangerous Goods. Regulation Name. Text	Regulation Name	A name, expressed as text, for a regulation of these transported dangerous goods.			0	unbounded
BBIE	Transport_ Dangerous Goods. Technical Name. Text	Technical Name	A technical name, expressed as text, for these transported dangerous goods.	(7254)		0	unbounded
BBIE	Transport_ Dangerous Goods. EMS. Identifier	EMS ID	The unique transport emergency procedure (EMS) identifier applicable for these transported dangerous goods.	(8364)		0	1
BBIE	Transport_ Dangerous Goods. Packaging Danger Level. Code	Packaging Danger Level Code	The code specifying the level of danger that the packaging of these dangerous goods must cover for transport purposes.	(8339)	UN02000069	0	1

ABIE/ BBIE/ ASBIE	Dictionary Entry Name	Short Name	Definition	TDED	Qualified Data Type UID	Occurrence MIN	Occurrence Max
BBIE	Transport_ Dangerous Goods. Hazard Classification. Identifier	Hazard Classification ID	The unique identifier of a hazard class applicable to these transported dangerous goods as defined by the relevant governing regulation authority.	(8351)		0	1
BBIE	Transport_ Dangerous Goods. Additional_ Hazard Classification. Identifier	Additional Hazard Classification ID	The unique identifier of an additional hazard class applicable to these transported dangerous goods.	(8078)		0	1
BBIE	Transport_ Dangerous Goods. Proper Shipping Name. Text	Proper Shipping Name	The proper shipping name, expressed as text, for these transported dangerous goods.			0	1
BBIE	Transport_ Dangerous Goods. Limited Quantity. Code	Limited Quantity Code	A code specifying facilitations for transport of limited quantities of these transported dangerous goods.			0	unbounded
ASBIE	Transport_ Dangerous Goods. Transport Expert. Trade_ Contact	Transport Expert Contact	The expert to be contacted for details about the transport of these dangerous goods.			0	1
ASBIE	Transport_ Dangerous Goods. Flashpoint Temperature. Measurement	Flashpoint Temperature	A measurement of the flashpoint temperature of these transported dangerous goods.			0	1
ABIE	Transport Setting_ Temperature. Details	Transport Temperature Setting	Temperature settings for a transport movement, such as a required storage temperature range.				
BBIE	Transport Setting_ Temperature. Value. Measure	Value	The measure of the value of this transport setting temperature, such as a temperature value of ten degrees Celsius.	(6411)	UN02000093	0	1
BBIE	Transport Setting_ Temperature. Minimum_ Value. Measure	Minimum Value	The measure of the lowest value of this transport setting temperature, such as a minimum temperature value of four degrees Celsius.			0	1

ABIE/ BBIE/ ASBIE	Dictionary Entry Name	Short Name	Definition	TDED	Qualified Data Type UID	Occurrence MIN	Occurrence Max
BBIE	Transport Setting_ Temperature. Maximum_ Value. Measure	Maximum Value	The measure of the highest value of this transport setting temperature, such as a maximum temperature value of fourteen degrees Celsius.			0	1
BBIE	Transport Setting_ Temperature. Type. Code	Type Code	The code specifying the type of transport setting temperature [Reference United Nations Code List (UNCL) 6245].	(6245)	UN02000046	0	1
ASBIE	Transport Setting_ Temperature. Information. Temperature Setting_ Instructions	Instructions	Informational instructions for achieving, maintaining, using or responding to this transport setting temperature.			0	1
ABIE	Referenced_ Document. Details	Referenced Document	Written, printed or electronic matter that is referenced.				
BBIE	Referenced_ Document. Issuer Assigned_ Identification. Identifier	Issuer Assigned ID	The unique issuer assigned identifier for this referenced document.	(1004)		0	1
BBIE	Referenced_ Document. URI_ Identification. Identifier	URI	The unique Uniform Resource Identifier (URI) for this referenced document.	(1004)		0	1
BBIE	Referenced_ Document. Formatted_ Issue. Date Time	Formatted Issue Date Time	The formatted date or date time for the issuance of this referenced document.	(2379)	UN02000153	0	1
BBIE	Referenced_ Document. Status. Code	Status Code	The code specifying the status for this referenced document.	(1373)	UN02000025	0	1
BBIE	Referenced_ Document. Copy. Indicator	Copy Indicator	The indication of whether or not the referenced document is a copy.			0	1
BBIE	Referenced_ Document. Line. Identifier	Line ID	The unique identifier of a line in this referenced document.	(1156)		0	1
BBIE	Referenced_ Document. Reference_ Type. Code	Reference Type Code	The code specifying the reference type of this referenced document.	(1153)	UN02000048	0	1

ABIE/ BBIE/ ASBIE	Dictionary Entry Name	Short Name	Definition	TDED	Qualified Data Type UID	Occurrence MIN	Occurrence Max
BBIE	Referenced_ Document. Global_ Identification. Identifier	Global ID	A unique global identifier for this referenced document.	(1004)		0	1
BBIE	Referenced_ Document. Revision_ Identification. Identifier	Revision ID	A unique identifier for a revision of this referenced document.	(1004)		0	1
BBIE	Referenced_ Document. Name. Text	Name	A name, expressed as text, for this referenced document.	(1000)		0	unbounded
BBIE	Referenced_ Document. Information. Text	Information	Information, expressed as text, for this referenced document.	(4142)		0	unbounded
BBIE	Referenced_ Document. Previous Revision_ Identification. Identifier	Previous Revision ID	An identifier for a previous revision of this referenced document.	(1004)		0	unbounded
BBIE	Referenced_ Document. Section Name. Text	Section Name	A section name, expressed as text, for this referenced document.			0	unbounded
BBIE	Referenced_ Document. Type. Code	Type Code	The code specifying the type of referenced document.	(1001)	UN02000006	0	1
BBIE	Referenced_ Document. Attachment. Binary Object	Attached Binary Object	A binary object that is attached or otherwise appended to this referenced document.			0	unbounded
ASBIE	Referenced_ Document. Issuer. Trade_ Party	Issuer	The trade related party that issues this referenced document.			0	1
ASBIE	Referenced_ Document. Attached. Specified_ Binary File	Attached Binary File	A specified binary file attached to this referenced document.			0	unbounded
ASBIE	Referenced_ Document. Effective. Specified_ Period	Effective Period	The specified period within which this referenced document is effective.			0	1
ABIE	Reference_ Price. Details	Reference Price	A reference to a sum of money for which something is or may be bought or sold.				
BBIE	Reference_ Price. Charge. Amount	Charge Amount	The monetary value of a charged reference price.			0	1

ABIE/ BBIE/ ASBIE	Dictionary Entry Name	Short Name	Definition	TDED	Qualified Data Type UID	Occurrence MIN	Occurrence Max
BBIE	Reference_ Price. Basis. Quantity	Basis Quantity	A quantity on which the reference price is based.	(5310)		0	unbounded
BBIE	Reference_ Price. Net Price. Indicator	Net Price Indicator	An indication of whether or not the reference price is a net price.			0	unbounded
BBIE	Reference_ Price. Comparison Method. Code	Comparison Method Code	The code specifying the comparison method for this reference price.			0	1
ABIE	Referenced_ Product. Details	Referenced Product	A reference to a product or service produced by human or mechanical effort or by a natural process for trading purposes.				
BBIE	Referenced_ Product. Identification. Identifier	ID	A unique identifier for this referenced product.	(7135)		0	unbounded
BBIE	Referenced_ Product. Global_ Identification. Identifier	Global ID	A unique global identifier for this referenced product.	(7135)		0	unbounded
BBIE	Referenced_ Product. Seller Assigned_ Identification. Identifier	Seller Assigned ID	The unique seller assigned identifier for this referenced product.	(7135)		0	1
BBIE	Referenced_ Product. Buyer Assigned_ Identification. Identifier	Buyer Assigned ID	The unique buyer assigned identifier for this referenced product.	(7135)		0	1
BBIE	Referenced_ Product. Manufacturer Assigned_ Identification. Identifier	Manufacturer Assigned ID	A unique manufacturer assigned identifier for this referenced product.	(7135)		0	1
BBIE	Referenced_ Product. Industry Assigned_ Identification. Identifier	Industry Assigned ID	A unique industry assigned identifier for this referenced product.	(7135)		0	1
BBIE	Referenced_ Product. Description. Text	Description	A textual description for this referenced product.			0	unbounded
BBIE	Referenced_ Product. Relationship_ Type. Code	Relationship Type Code	A code specifying a type of relationship for this referenced product.			0	unbounded

ABIE/ BBIE/ ASBIE	Dictionary Entry Name	Short Name	Definition	TDED	Qualified Data Type UID	Occurrence MIN	Occurrence Max
BBIE	Referenced_ Product. Unit. Quantity	Unit Quantity	A unit quantity of this referenced product.			0	unbounded
ABIE	Referenced_ Standard. Details	Referenced Standard	A referenced norm or requirement that establishes uniform criteria, methods, processes and practices, such as in engineering or technical areas.				
BBIE	Referenced_ Standard. Identification. Identifier	ID	The identifier of this referenced standard.			0	1
BBIE	Referenced_ Standard. Version. Identifier	Version ID	The identifier of the version of this referenced standard.			0	1
BBIE	Referenced_ Standard. Element Version. Identifier	Element Version ID	The identifier of the version of a specific element within the referenced standard, such as the version of a data element.			0	1
BBIE	Referenced_ Standard. URI. Identifier	URI	The Uniform Resource Identifier (URI) for this referenced standard.			0	1
BBIE	Referenced_ Standard. Part Identification. Identifier	Part ID	The identifier of a part of this referenced standard, such as a section or topic.			0	1
BBIE	Referenced_ Standard. Agency. Identifier	Agency ID	The identifier of the agency for this referenced standard.			0	1
ABIE	Registered_ Tax. Details	Registered Tax	A registered tax or duty system pertaining to an authority.				
BBIE	Registered_ Tax. Type. Code	Type Code	The code specifying the type of registered tax.	(5153)		0	1
BBIE	Registered_ Tax. Exemption Reason. Code	Exemption Reason Code	The code specifying the exemption reason for this registered tax.			0	1
BBIE	Registered_ Tax. Exemption Reason. Text	Exemption Reason Text	A reason, expressed as text, for exemption from this registered tax.			0	unbounded
BBIE	Registered_ Tax. Currency. Code	Currency Code	The code specifying the currency for this registered tax.			0	1

ABIE/ BBIE/ ASBIE	Dictionary Entry Name	Short Name	Definition	TDED	Qualified Data Type UID	Occurrence MIN	Occurrence Max
BBIE	Registered_ Tax. Jurisdiction. Text	Jurisdiction Text	A jurisdiction, expressed as text, for this registered tax.			0	unbounded
BBIE	Registered_ Tax. Description. Text	Description	A textual description of this registered tax.			0	unbounded
BBIE	Registered_ Tax. Customs Duty. Indicator	Customs Duty Indicator	The indication of whether or not this registered tax is a customs duty.			0	1
ABIE	Returnable Asset_ Instructions. Details	Returnable Asset Instructions	The procedures to follow for returnable assets, such as reusable packaging (pallets, crates).				
BBIE	Returnable Asset_ Instructions. Material. Identifier	Material ID	An identifier of the material to which these returnable asset instructions apply.			0	unbounded
BBIE	Returnable Asset_ Instructions. Terms And Conditions_ Description. Text	Terms And Conditions Text	A textual description of the terms and conditions for these returnable asset instructions.	(4400)		0	unbounded
BBIE	Returnable Asset_ Instructions. Terms And Conditions_ Description. Code	Terms And Conditions Code	The code specifying the description of the terms and conditions for these returnable asset instructions.	(4401)		0	1
BBIE	Returnable Asset_ Instructions. Deposit Value_ Specified. Amount	Deposit Amount	A deposit value specified in these returnable asset instructions.			0	unbounded
ASBIE	Returnable Asset_ Instructions. Deposit Value_ Validity. Specified_ Period	Deposit Validity Period	The specified period during which the deposit value specified in these returnable asset instructions is valid.			0	1
ABIE	Spatial_ Dimension. Details	Spatial Dimensions	A measure of spatial extent of an object, such as the length, breadth or height of a shipping container.				
BBIE	Spatial_ Dimension. Value. Measure	Value Measure	The measure of the value of this spatial dimension.			0	1

ABIE/ BBIE/ ASBIE	Dictionary Entry Name	Short Name	Definition	TDED	Qualified Data Type UID	Occurrence MIN	Occurrence Max
BBIE	Spatial_ Dimension. Type. Code	Type Code	The code specifying the type of spatial dimension, such as thickness, area, or volume.	(6145)	UN02000071	0	1
BBIE	Spatial_ Dimension. Description. Text	Description	A textual description of this spatial dimension.			0	unbounded
BBIE	Spatial_ Dimension. Width. Measure	Width	The measure of the width component of this spatial dimension.			0	1
BBIE	Spatial_ Dimension. Length. Measure	Length	The measure of the length component of this spatial dimension.			0	1
BBIE	Spatial_ Dimension. Height. Measure	Height	The measure of the height component of this spatial dimension.			0	1
BBIE	Spatial_ Dimension. Identification. Identifier	ID	The unique identifier of this spatial dimension.			0	1
BBIE	Spatial_ Dimension. Diameter. Measure	Diameter	The measure of the diameter component for this spatial dimension.	(6411)	UN02000092	0	1
ABIE	Specified_ Binary File. Details	Binary File	A specified computer file or program stored in a binary format.				
BBIE	Specified_ Binary File. Identification. Identifier	ID	A unique identifier for this specified binary file.			0	unbounded
BBIE	Specified_ Binary File. Title. Text	Title	A title, expressed as text, for this specified binary file.			0	unbounded
BBIE	Specified_ Binary File. Author Name. Text	Author Name	A name of an author, expressed as text, of this specified binary file.			0	unbounded
BBIE	Specified_ Binary File. Version. Identifier	Version ID	The unique version identifier for this specified binary file.			0	1
BBIE	Specified_ Binary File. File Name. Text	Name	The file name, expressed as text, of this specified binary file.			0	1
BBIE	Specified_ Binary File. URI. Identifier	URI	The unique Uniform Resource Identifier (URI) for this specified binary file.			0	1

ABIE/ BBIE/ ASBIE	Dictionary Entry Name	Short Name	Definition	TDED	Qualified Data Type UID	Occurrence MIN	Occurrence Max
BBIE	Specified_ Binary File. MIME. Code	MIME Code	The code specifying the Multipurpose Internet Mail Extensions (MIME) type for this specified binary file.			0	1
BBIE	Specified_ Binary File. Encoding. Code	Encoding Code	The code specifying the encoding of this specified binary file.			0	1
BBIE	Specified_ Binary File. Character Set. Code	Character Set Code	The code specifying the character set for this specified binary file.			0	1
BBIE	Specified_ Binary File. Included. Binary Object	Included Binary Object	A binary object included in this specified binary file.			0	unbounded
BBIE	Specified_ Binary File. Access. Text	Access Text	Access information, expressed as text, for this specified binary file, such as security and download parameters.			0	unbounded
BBIE	Specified_ Binary File. Description. Text	Description	A textual description of this specified binary file.			0	unbounded
BBIE	Specified_ Binary File. Size. Measure	Size	The measure of the size of this specified binary file.			0	1
ASBIE	Specified_ Binary File. Access Availability. Specified_ Period	Access Availability Period	The specified period when access to this binary file is available.			0	1
ABIE	Specified_ Period. Details	Period	A specified period of time.				
BBIE	Specified_ Period. Duration. Measure	Duration Measure	A measure of the length of time for this specified time period such as hours, days, weeks, months, years.			0	unbounded
BBIE	Specified_ Period. Inclusive. Indicator	Inclusive Indicator	The indication of whether or not the start and end dates are included in this specified period.			0	1
BBIE	Specified_ Period. Description. Text	Description	A textual description of this specified period of time.	(2118)		0	unbounded

ABIE/ BBIE/ ASBIE	Dictionary Entry Name	Short Name	Definition	TDED	Qualified Data Type UID	Occurrence MIN	Occurrence Max
BBIE	Specified_ Period. Start. Date Time	Start Date Time	The date, time, date time or other date time value for the start of this specified period of time.			0	1
BBIE	Specified_ Period. End. Date Time	End Date Time	The date, time, date time or other date time value for the end of this specified period of time.			0	1
BBIE	Specified_ Period. Complete. Date Time	Complete Date Time	The date, time, date time or other date time value for a complete specified period of time expressed as a specific month, a specific week, etc.			0	1
BBIE	Specified_ Period. Season. Code	Season Code	The code specifying the season for this specified period.			0	1
BBIE	Specified_ Period. Identification. Identifier	ID	The unique identifier of this specified period.			0	1
BBIE	Specified_ Period. Name. Text	Name	A name, expressed as text, of this specified period.			0	unbounded
BBIE	Specified_ Period. Sequence. Numeric	Sequence Number	A sequence number for this specified period.			0	1
BBIE	Specified_ Period. Start Date Flexibility. Code	Start Date Flexibility Code	The code specifying the flexibility of the start date of this specified period.			0	1
BBIE	Specified_ Period. Continuous. Indicator	Continuous Indicator	The indication of whether or not this specified period is continuous.			0	1
ABIE	Supply Chain_ Event. Details	Supply Chain Event	A significant occurrence or happening in a supply chain.				
BBIE	Supply Chain_ Event. Identification. Identifier	ID	The unique identifier for this supply chain event.	(1007)		0	1
BBIE	Supply Chain_ Event. Occurrence. Date Time	Occurrence Date Time	A date, time, date time, or other date time value of an occurrence of this supply chain event.	(2193)		0	1

ABIE/ BBIE/ ASBIE	Dictionary Entry Name	Short Name	Definition	TDED	Qualified Data Type UID	Occurrence MIN	Occurrence Max
BBIE	Supply Chain_ Event. Type. Code	Type Code	A code specifying the type of supply chain event.	(9171)		0	1
BBIE	Supply Chain_ Event. Description. Text	Description	A textual description of this supply chain event.			0	unbounded
BBIE	Supply Chain_ Event. Description. Binary Object	Description Binary Object	Binary object data, such as a photograph, describing this supply chain event.			0	unbounded
BBIE	Supply Chain_ Event. Unit. Quantity	Unit Quantity	A number of units for this supply chain event.			0	1
BBIE	Supply Chain_ Event. Latest_ Occurrence. Date Time	Latest Occurrence Date Time	The date, time, date time, or other date time value of the latest occurrence of this supply chain event.	(2193)		0	1
BBIE	Supply Chain_ Event. Earliest_ Occurrence. Date Time	Earliest Occurrence Date Time	The date, time, date time, or other date time value of the earliest occurrence of this supply chain event.	(2193)		0	1
BBIE	Supply Chain_ Event. Time_ Occurrence. Date Time	Occurrence Time	A time value of an occurrence of this supply chain event.	(2193)	UN02000183	0	1
ASBIE	Supply Chain_ Event. Occurrence. Specified_ Period	Occurrence Period	A specified period of time during which this supply chain event occurs.			0	1
ASBIE	Supply Chain_ Event. Occurrence. Logistics_ Location	Location	A logistics location where this supply chain event occurs.			0	1
ABIE	Supply Chain_ Packaging. Details	Supply Chain Packaging	Any material with which supply chain goods are packaged, such as a box or bubble wrap.				
BBIE	Supply Chain_ Packaging. Type. Code	Type Code	The code specifying the type of supply chain packaging.	(7065)	UN02000043	0	1
BBIE	Supply Chain_ Packaging. Type. Text	Type Text	The type, expressed as text, of supply chain packaging.	(7064)		0	1

ABIE/ BBIE/ ASBIE	Dictionary Entry Name	Short Name	Definition	TDED	Qualified Data Type UID	Occurrence MIN	Occurrence Max
BBIE	Supply Chain_ Packaging. Condition. Code	Condition Code	A code specifying the condition of this supply chain packaging.			0	1
BBIE	Supply Chain_ Packaging. Disposal Method. Code	Disposal Method Code	A code specifying the disposal method of this supply chain packaging.			0	unbounded
BBIE	Supply Chain_ Packaging. Weight. Measure	Weight	A measure of the weight of this supply chain packaging.			0	unbounded
BBIE	Supply Chain_ Packaging. Maximum Stackability. Quantity	Maximum Stackability Quantity	The number of units of this type of supply chain packaging which can be stacked on top of each other.			0	1
BBIE	Supply Chain_ Packaging. Maximum Stackability_ Weight. Measure	Maximum Stackability Weight	The measure of the maximum stackability weight of this supply chain packaging.			0	1
BBIE	Supply Chain_ Packaging. Description. Text	Description	A textual description of this supply chain packaging.			0	unbounded
BBIE	Supply Chain_ Packaging. Customer Facing_ Total Unit. Quantity	Customer Facing Total Unit Quantity	The total number of units of this supply chain packaging facing the customer, such as would be seen when this packaging is placed on a retail shelf.			0	1
BBIE	Supply Chain_ Packaging. Total Unit. Quantity	Total Unit Quantity	A total number of units contained in this supply chain packaging.			0	unbounded
BBIE	Supply Chain_ Packaging. Layer_ Total Unit. Quantity	Layer Total Unit Quantity	The total number of units in a layer of this supply chain packaging.			0	1
BBIE	Supply Chain_ Packaging. Content Layer. Quantity	Content Layer Quantity	The number of content layers that are or may be packaged with this supply chain packaging, such as the number of layers of product on a pallet.			0	1
BBIE	Supply Chain_ Packaging. Returnable. Indicator	Returnable Indicator	The indication of whether or not this supply chain packaging is returnable.			0	1

ABIE/ BBIE/ ASBIE	Dictionary Entry Name	Short Name	Definition	TDED	Qualified Data Type UID	Occurrence MIN	Occurrence Max
ASBIE	Supply Chain_Packaging. Linear. Spatial_Dimension	Dimensions	The linear spatial dimensions of this supply chain packaging.			0	1
ASBIE	Supply Chain_Packaging. Minimum_Linear. Spatial_Dimension	Minimum Dimensions	The minimum linear spatial dimensions of this supply chain packaging.			0	1
ASBIE	Supply Chain_Packaging. Maximum_Linear. Spatial_Dimension	Maximum Dimensions	The maximum linear spatial dimensions of this supply chain packaging.			0	1
ASBIE	Supply Chain_Packaging. Specified. Packaging_Marking	Marking	A marking specified for this supply chain packaging, such as an inscription, stamp or label to indicate date, ownership, quality, manufacture or origin.			0	unbounded
ASBIE	Supply Chain_Packaging. Applicable. Material_Goods Characteristic	Goods Characteristic	Material goods characteristic applicable to this supply chain packaging.			0	unbounded
ASBIE	Supply Chain_Packaging. Applicable. Disposal_Instructions	Disposal Instructions	Disposal instructions for this supply chain packaging.			0	unbounded
ASBIE	Supply Chain_Packaging. Applicable. Returnable Asset_Instructions	Returnable Asset Instructions	Returnable asset instructions for this supply chain packaging.			0	unbounded
ABIE	Universal_Communication. Details	Communication	The exchange of thoughts, messages, or information, as universally exchanged by speech, signals, writing, or behaviour between persons and/or organizations.				
BBIE	Universal_Communication. URI. Identifier	URI	The Uniform Resource Identifier (URI), such as a web or an email address, for this universal communication.	(3148)		0	1

ABIE/ BBIE/ ASBIE	Dictionary Entry Name	Short Name	Definition	TDED	Qualified Data Type UID	Occurrence MIN	Occurrence Max
BBIE	Universal_Communication. Channel. Code	Channel Code	The code specifying the channel or manner in which a universal communication can be made, such as telephone or email.	(3155)	UN02000121	0	1
BBIE	Universal_Communication. Complete Number. Text	Complete Number	The text string of characters that make up the complete number for this universal communication.	(3148)		0	1

Public Review

9 Code Lists Used

9.1 New Code List

Not applicable

9.2 Additions to an Existing Code List

Not applicable

9.3 Use or Reference of an Existing Code List

Table 6 Use or Reference of an Existing Code List

Nr	Data Element	Agency Identifier	Code List Identifier
1	AccountingAmountType	EDIFICAS-EU	UN02000102
2	AllowanceChargeIdentificationCode	UNECE	UN02000134
3	AllowanceChargeReasonCode	UNECE	UN02000118
4	AutomaticDataCaptureMethodCode	UNECE	UN02000119
5	CommunicationMeansTypeCode	UNECE	UN02000121
6	ContactFunctionCode	UNECE	UN02000122
7	DangerousGoodsPackagingLevelCode	UNECE	UN02000069
8	DangerousGoodsRegulationCode	UNECE	UN02000070
9	DeliveryTermsCode	UNECE	UN02000005
10	DimensionTypeCode	UNECE	UN02000071
11	DocumentNameCode	UNECE	UN02000006
12	DocumentNameCode_Accounting	UNECE	UN02000110
13	DocumentStatusCode	UNECE	UN02000025
14	DurationUnitMeasure	UNECE	UN02000026
15	DutyorTaxorFeeCategoryCode	UNECE	UN02000014
16	DutyTaxFeeTypeCode	UNECE	UN02000015
17	EventTimeReferenceCode	UNECE	UN02000183
18	EventTimeReferenceCodePaymentTermsEvent	UNECE	UN02000008
19	FormattedDateTime	UNECE	UN02000153
20	ISO3AlphaCurrencyCode	ISO	UN02000004
21	ISOTwo-letterCountryCode	ISO	UN02000003
22	LineStatusCode	UNECE	UN02000124
23	MeasurementUnitCommonCodeLinear	UNECE	UN02000092
24	MessageFunctionCode	UNECE	UN02000125
25	PackageTypeCode	UNECE	UN02000043
26	PackagingMarkingCode	UNECE	UN02000126
27	PartyRoleCode	UNECE	UN02000044
28	PaymentTermsTypeCode	UNECE	UN02000083
29	PriceTypeCode	UNECE	UN02000013

Nr	Data Element	Agency Identifier	Code List Identifier
30	ReferenceTypeCode	UNECE	UN02000048
31	Temperature TypeCode	UNECE	UN02000046
32	TemperatureUnitMeasure	UNECE	UN02000093
33	TimeReferenceCode	UNECE	UN02000016
34	WeightUnitMeasure	UNECE	UN02000095

12
13
14

Table 7 Recommended code lists

Data Element	Agency Identifier	Code List Identifier	Recommended for
PaymentTermsDescriptionIdentifier	UNECE	UN02000012	Trade_ Payment Terms. Identification. Identifier

15
16
17
18

9.4 Restriction of an Existing Code List

Not applicable

19	10 Message Library Update
20	10.1 Message Assembly Submission
21	Not applicable
22	10.2 Core Component Library Update
23	10.2.1 Referenced CCL
24	Not applicable
25	10.2.2 CCL Update Submission
26	Not applicable
27	
28	10.3 Model Exchange File
29	Not applicable
30	
31	10.4 Additional Information
32	Not applicable
33	
34	

Public Review

35 **12 Definition of Terms**

36

Term	Definition
Document Information	Information about the catalogue document.
Catalogue Identifier	The identifier of the catalogue collection assigned by the catalogue provider
Catalogue Request Reference	The reference to the request of the catalogue.
Catalogue Subscription Reference	The reference to the catalogue subscription.
Description	A general overall description of the catalogue.
Validity period	The period for which the catalogue or catalogue collection is valid.
Catalogue status code	Code giving the status of the catalogue.
Catalogue update/replace, Reference	Reference to the updated or replaced catalogue .
Price List Reference	A reference to the price list for this catalogue.
Contract Reference	A reference to business contract which the catalogue is based upon.
Trading Terms	Trading terms and conditions that apply to all trade items in the catalogue
Catalogue Provider	The provider of the catalogue information.
Catalogue Receiver	The receiver of the catalogue information
Procurement Party	The party at the customer side responsible for negotiating the contract and the contents of the catalogue.
Supplier Party	Party who owns the item and consigns or makes them available in trade.
Delivery Date Period	The date period in which catalogue items may be delivered
Payment Instructions	The payment instructions applicable to the catalogue
Payment Terms	The payment term applicable to the catalogue
Target market	A geographical area based upon geographical boundaries sanctioned by the United Nations, in which the trade items mentioned in the catalogue are available.
Delivery Region, text	A medium-scale area of land to which the items mentioned in the catalogue can be delivered.
Delivery Location	A geographical location to which the items mentioned in the catalogue can be delivered.
Line Count Numeric	The number of lines in the catalogue.
Catalogue Item Identification	The identification of the catalogue item according to a cataloguing system
Catalogue item action code	The code specifying the action valid for the catalogue item.
Trade Item Grouping Code	A code assigned by the supplier or manufacturer to logically group trade items independently from classification systems.
Trade Item Grouping Name	The corresponding name in clear text for the grouping code of a trade item.
Catalogue item availability Code	Code indicating availability of the catalogue item
Catalogue Item Information Provider Party	The party who provides the catalogue item information.
Trade Item Shipping Period	Indicates the date period the catalogue item can be shipped.
Catalogue item information Validity period	The period during which the information provided for the catalogue item is valid.

Term	Definition
Catalogue item information Change latest date time	The last date time the catalogue item data was changed
Multimedia presentation	Multimedia presentation of the item (e.g. picture or drawing)
Additional Information	A link to additional information on the item (e.g., the URL of a relevant web page).
Additional Information Note, text	Additional information in clear text about the item not already given as structured information To be used as non-structured information.
Keyword, text	A text string or synonyms to be used for searching for the catalogue item.
Replacing	References to catalogue items that can replace or substitute the catalogue Item
Catalogue item	
Accessory Product	Relation to accessories or attachments to the catalogue Item e.g. headphones to a mobile phone
Required Product	Relation to a required product to the catalogue item e.g. a subscription to a mobile phone
Complementary Product	Relation to products that compliments the catalogue item e.g. coal for a barbecue
Component Product	Relation to components or parts to the product e.g. an ink cartridge for a printer
Additional Product relation	Relationship to other products other than replacing product, accessory product, required related product, complementary product and component product.
Catalogue Item Reorderable Indicator	The indicator indicating that the catalogue item may be reordered.
Tracking System Identifier	Identifies a system by which the product is being tracked.
Target market	A geographical area based upon geographical boundaries sanctioned by the United Nations, in which the catalogue items are available.
Tax Information	Information about all applicable taxes for the catalogue item
Trade Agreement	Information on trade agreements
Trade Delivery	Information on trade deliveries.
Product	Information on the product (trade item).
Tax Type Code	The code indicating the type of tax
Tax Type Description	Description of tax type code.
Tax Category Code	Code specifying a duty or tax or fee category
Tax exemption reason	Information about the reason for exemption of tax, coded or in clear text
Tax Rate Percentage	The percentage value of the tax rate when specified in percentage
Tax Rate Monetary amount	The monetary value of the tax rate when specified as a monetary amount (for a specified currency)
Tax location	A country or other geographical area to which a specific tax is applicable.
Tax Agency Code	A code identifying the (national) tax agency.
Reason for exemption, code	A code identifying the reason for tax exemption.
Reason for exemption, text	Reason for tax exemption in clear text.
Procurement Party	The party at the customer side responsible for negotiating the contract and the contents of the catalogue.
Supplier Party	Party who owns the product and consigns or makes them available in trade.

Term	Definition
Trading Terms	Trading terms and conditions which apply to all trade items. Trading terms can be given in text and/or as a reference to where the trading terms can be found (URL to national or industry specific terms).
Contract Reference	The reference to a contract.
Contract Subdivision text	A text giving a subdivision of a contract or tender.
Price Contract Reference	The reference to a contract specifying the price conditions.
Customer Support Centre - Party	The customer support centre for the catalogue item.
Restricted information indicator	The indicator to qualify that catalogue item information is restricted to specific use according to agreement.
Product Ordering Period	The period of date the catalogue item (product) can be ordered.
Product Exclusivity end date time	The date and time at which a catalogue item (product) no longer is exclusive to the trading partner
Availability To Consumer Start Date and Time	The first date/time the buyer is allowed to resell the catalogue item (product).
Product First Delivery Date	The earliest date at which the supplier can deliver the catalogue item (product) to the trading partner.
Minimum product lifespan from time of arrival, Days	A number of days from the arrival date, guaranteed by the manufacturer, before the expiration date of the product.
Orderable indicator	The indicator identifying that the catalogue item may be ordered.
Made to Order Indicator	Indicates that the item will only be produced when the manufacturer receives an order.
Trade Item Delivery Lead Time	The time taken from the time of order to the time of delivery for the Item in a specific delivery quantity to a specific delivery location or region.
Catalogue Item Pick Up Lead Time	The earliest time an ordered catalogue item is available for pick up expressed as weeks, days, hours (etc).
Catalogue Item Order Incremental Quantity	The incremental quantity in which the product must be ordered e.g. 10 = orders of 10, 20, 30 etc.
Catalogue Item Minimum Order Quantity	The minimum quantity of the product which must be ordered
Catalogue Item Minimum Order Quantity Date Period	The date period for when the minimum order quantity is available for ordering.
Catalogue Item Maximum Order Quantity	The maximum quantity of the catalogue item available for ordering.
Catalogue Item Maximum Order Quantity Date Period	The date period for when the maximum order quantity is available for ordering .
Ordering Unit Of Measure	The unit of measure for the ordering of the catalogue item (product).
Selling Unit Of Measure	The unit of measure for the selling of the product to the end consumer.
Purchase Conditions	The conditions applying to the sale or purchase of the catalogue item
Warranty Information text	Warranty information in clear text about the catalogue item.
Price information	Price(s) information applied to the product.
Delivery terms	The delivery terms and if relevant the location related to the delivery terms.
Marketing	Marketing information about the catalogue item
Price List Reference	A reference to a price list.
Catalogue Item Price amount	The price amount for the catalogue item.
Price Amount Type Code	The code for the price amount type.
Additional Price Amount Type Code	The code for an additional price amount type.

Term	Definition
Price Basis Quantity	The quantity of the Item to which the applicable price applies.
Allowance Charge	Charges and discounts for the catalogue item
Price Change Reason Text	The reason for the price change expressed as text
Validity Period for Price	The period(s) for which the price is valid.
Bracket Price Quantity Range	The quantity range (minimum, maximum) of the item for which the price is valid.
Price Validity Location	A delivery location(s) for which the price is valid.
Price Comparison	Price comparison information of the product.
Price List Identifier	The identifier for the price list.
Validity Period	The period(s) for which the price list is valid.
Immediate Previous Price List Reference	A reference to a immediate previous price list.
Comparison Price Amount	The price for the comparison quantity of the trade item in respect to the price comparison type (code).
Price Comparison Quantity	The quantity used for price comparison.
Price Comparison Type Code	Code indicating how price comparison is made. (How to calculate the comparative price.)
Handling Instructions	The specific instructions for storage, transport or handling of the product.
Carrier Party	The party which provides transport services.
Production Batch Identification	An identification of the production batch of the product.
Import Classification Code List Type Code	A code indicating the import classification code list used for the trade item.
Import Classification Value	The used value from the according import classification code list for the trade item.
Product Identification	The identification(s) of the product.
Official regulations compliance code	A code indicating the product to be in compliance with specific applicable official regulations.
Consumer unit indicator	Indicator identifying the product as a consumer unit.
Despatch unit indicator	The indicator identifying that the product may serve as a dispatch (shipping) unit
Product Launch Cancellation date	The cancellation date of the launch of a product that was never and will never be manufactured, but may previously been presented to buyers.
Manufacturer Party	The party who makes the product (not to imply a party who simply provides packaging of the product).
Product rights owner party	The party who owns the rights of the product.
Minimum product lifespan from time of production, Days	A number of days from the production date, guaranteed by the manufacturer, before the expiration date of the product.
Opened Product Lifespan, Days	The number of days remaining from the time of break opening of the packaging of the product until not good for consuming.
Product Discontinued date	The date on which the product is no longer produced.
Product Change latest date time	The latest date time on which the product data was changed.
Product Name Text	The name of the product which distinguish it from other products and if necessary to be used in trade messages such as order and invoice.
Product Functional Description Text	A description of the use of the product.
Product Description Short Text	A short description of the product which can be used on shelf edge and on receipts.
Model Name	The model name.

Term	Definition
Additional Product Description Text	An additional description of the product.
Variant description Text	A description used to identify the variant of the product. Variants are the distinguishing characteristics that differentiate items with the same brand and size such as flavour, fragrance, taste.
Product Brand Name	The brand name of the product
Sub Brand Name	Second level of brand name for the product.
Descriptive Form Text	A description of the physical form or shape of the product. Used, for example, in pharmaceutical industry to indicate the formulation of the trade item. Defines the form the trade item takes and is distinct from the form of the packaging. Examples: paste, gel, powder
Product Quantity	The quantity of the content contained in the product (trade item) (incl measurement unit code according to UN/ECE recommendation 20 / UN/CEFACT code list 6411)
Quantity Of Product Contained In Inner Pack	Indicates the number of non-coded physical groupings (inner packs) of next lower level of the trade item.
Product Drained Weight	The weight of the product of the trade item when drained of its liquid.
Trade Item Variable Measure Indicator	Indicator identifying the trade item as a variable measure trade item. The content of the trade item vary about either weight, length or volume (or other)
Country of origin Code	The code for the country in which (where) the product has been produced or manufactured
Subdivision Country of Origin code	A code for subdivision of country of origin (state, province or region) in which the product has been produced or manufactured
Country of assembly	The country where the product is assembled.
Product Colour Code	A code for describing the colour of the product.
Product Colour Description	A clear text describing the colour of the product.
Product Prepack Type Code	A code specifying if the content of the product is pre-packed or contains loose products.
Customer Configurable Code	A code indicating that the customer may configure the item.
Recyclable type code	A code specifying the recyclable sign marked on the product.
Product marked with Serial number Indicator	Indicate if a serial number is marked on the product.
Security tag type Code	A code indicating the type of security tag on the product.
Security tag location Code	A code specifying where the security tag is located on the product.
Product Unit	An association to actual instance(s) of the Product.
Hazardous information	The information regarding hazardous and dangerous characteristics of the product.
Package information	Information about how the product is packed e.g. package type.
Logistic unit information	The information about the configuration of the logistic unit (e.g pallet, roll cage) Only to be used when the product is packed in a logistic unit and that unit is not specified as a "product" and consequently has no unique identification (e.g a GTIN). (Equivalent info on logistic units with unique identification is found in the class "Hierarchy Information")
Hierarchy information	Description of product hierarchy, multi pack and product composed by more than one product.
Physical Dimensions	The physical dimensions of the product.
Property	A technical property of the product.

Term	Definition
Product Class	Classification of the product.
Product Material	The material(s) of which the product is composed.
Product Information Representation Reference	A reference to another representation format for product information.
Identification of the product	An identifier for the product.
Used Product Identification System	The used system for identification of the product.
Identification Issuing Party	An association to the party issuing the item Identification.
Product Identification Issuing Party	An association to the party that issued the Item Identification.
Extended Identification of the product	An extended identifier for the item that identifies the item with specific properties, e.g., Item 123 = Chair / Item 123 Ext 45 = brown chair.
Identifying Physical Attribute	Physical attribute(s) of the product for additional identification of the product.
Identifying Measurement Dimension	Measurement(s) of the product for additional identification of the product.
Campaign	A specific campaign for marketing the product.
Additional Marketing Document Reference	The link (e.g. URL) to an additional document.
Product Range Name	A name, used by the brand owner, that span multiple consumer categories or uses.(E.g. Waist Watchers.).
Brand Owner Party	Name and identification of the party who owns the brand of the product.
Product Organic Code	Indicates the code for organic status of a product or of one or more of its components used for marketing purpose.
Organic Claim Agency	Indication of the governing body that determines if products can claim to be organic for marketing purpose.
Health Claim Text	Free text field for any health claims according to regulations of the target market.
Trade Item_ Marketing Special Item Code	A code used for identifying specific items for promotional or special tracking purposes.
Trade Item Feature Benefit Text	Description in clear text to describe the key features or benefits of the product/trade item. Used e.g for display purposes.
Season period Date and Time	Indicates the period for a seasonal product.
Trade Item Marketing Message	Marketing message for a trade item to use towards the consumer.
Descriptive Size Text	An alphanumeric size factor of the product . IE Jumbo, Capri, Full Length, Maxi . (Multi language)
Applicable Season, text	Season(s) applicable to the item in clear text.
Season Parameter, code	Code indicating the season, in which the trade item is available, i.e. assignment to one of the following collection periods: spring/summer, autumn/ winter or all year around.
Consumer Age, text	The age of the targeted consumer age range for which the product has been designed in clear text.
Consumer Gender, text	The gender of the targeted consumer for which the trade item (product) has been designed. In clear text
Marketing Feature	A marketing feature of the product, such as target consumer group.
Product Marketing Campaign Name	The name of a marketing campaign of a product.
Product marketing campaign period	The period for the marketing campaign of a product.
Warranty Party	An association to the party providing warranty of the Item on the Catalogue Line
Warranty Validity Period	An association to the validity of the warranty of the Item on the Catalogue Line
Warranty Information text	Warranty information text about the catalogue item.

Term	Definition
Product Material Area Weight	The measured area weight of the material.
Product Gross weight	The gross weight of the product (includes all packaging materials of the product)
Product Height	The height of the product. The vertical dimension from the lowest extremity to the highest extremity, including packaging. (At a pallet level the item Height will include the height of the pallet itself.)
Product depth	The depth of the product. Measured from front to back of the product.
Product width	The measurement from left to right of the product. Measurements are relative to how the customer normally views the trade item. Needs to be associated with a valid UoM.
Product diameter	The measurement of the diameter of the product at its largest point.
Stacking factor	The number of levels the item or package may be stacked
Maximum stacking weight	The maximum admissible weight that can be stacked on the item or package.
Delivery to distribution centre temperature maximum	The permitted maximum temperature of the item or package on transport to the distribution centre.
Delivery to distribution centre temperature minimum	The permitted minimum temperature of the item or package on transport to the distribution centre.
Delivery to market temperature maximum	The permitted maximum temperature of the item or package during delivery to market
Delivery to market temperature minimum	The permitted minimum temperature of the item or package during delivery to market to market
Storage temperature maximum	The maximum temperature at which the item or package can be stored.
Storage temperature minimum	The minimum temperature at which the item or package can be stored.
Storage humidity maximum	The maximum humidity in percentages that the item or package should be stored in
Storage humidity minimum	The minimum humidity in percentages that the item or package should be stored in
Instruction text	Specific handling instructions in text format (e.g. lift requirements)
Dangerous goods regulation code	The code specifying a dangerous goods regulation.
Dangerous Goods Hazard Class	An identification of the hazard class applicable to the dangerous substance or product as defined by the relevant regulation authority, such as the IMDG class number of the SOLAS convention of IMO or the ADR/RID class number of the road/rail environment. Describes the type of dangerousness.
	Dangerous goods classification of the trade item. There are 9 danger classes, some classes are further subdivided into subclasses. "Class" number explains in general terms the nature and properties of the goods and serves to classify them together in terms of their most significant risk.
Dangerous Goods Packing Group	Identifies the degree of risk the dangerous goods present during transport according to IATA/IMDG/ADR/RID regulations.
Dangerous Goods Hazardous Code Identifier	Dangerous goods hazard ID number, which must be applied to the vehicle, when transporting this trade item (dangerous good) by road or rail, to inform the police, the fire brigade and others in case of an accident about the kind of danger caused by the cargo.

Term	Definition
Dangerous Goods AMargin Number	Code indicating whether facilitations for the transport of defined limited quantity by road or rail are possible or not. (code according to ADR)
Dangerous goods regulation name	The name of the dangerous substance or product as provided in the list of dangerous goods regulations.
Dangerous goods technical name	Provides the details of hazardous information. Chemical term of the trade item, listed by name and allowed in the substance list of GGVS (Dangerous Goods Ordinance for Roads) or GGVE (Dangerous Goods Ordinance for Rail). The name by which as dangerous substance or product may be correctly identified or which is sufficient information to permit identification by reference to generally available literature.
Dangerous Goods Shipping Name	Shipping name of the trade item (dangerous goods). The recognized agencies (see dangerousGoodsRegulationsCodes), in their regulations, provide a list of all acceptable proper shipping names.
United Nations Dangerous goods (UNDG) Identification	The four-digit number assigned by the United Nations Committee of Experts on the Transport of Dangerous Goods to classify a substance or a particular group of substances. Abbreviation: UNDG Number.
Flash point temperature	The lowest temperature at which a substance gives off a sufficient vapor to support combustion.
Material Safety Data Sheet Reference	The identity of a Material Safety Data Sheet for the product
Hazardous information contact	Party to be contacted with relation to the product hazardous information
Number (quantity) of different products contained in a mixed product	The number (quantity) of different unique products contained in a mixed product. A mixed product may contain 2 or more different products.
Product Total Quantity	Total quantity of products that this product contains.
Next lower product level information.	Information on next lower product level.
Product Identification of a product contained in a product	The unique identification of the product contained in an identified product.
Quantity Of Products contained in a product	The quantity of products contained in the product
Item identification	The identification of the related catalogue item.
Relation type	The code specifying the type of relation between items
Related item quantity	The quantity of related catalogue items, e.g. next lower level item that this item contains.
Additional Information	A textual description of or other information about the relation.
Type	The type of Marketing Feature.
Type description	The description of the type of Marketing Feature.
Definition	The definition of the type of Marketing Feature.
Coded value	The coded value(s) of the marketing feature.
Text value	The textual value(s) of the marketing feature.
Measurement	Measured value(s) of the marketing feature.
Barcode type marked on package, code	The type of bar code or codes, which are visible on the product or package.
Expiration date type marked on package, code	A code specifying the type of expiration date of the product marked on the product.
Package/Product Marked With Batch number Indicator	Indicate if the product/package is marked with a batch number.
Package marked with Retail price Indicator	The indication of whether there is a retail price of the product physically on or attached to the package

Term	Definition
Package Marked With Ingredients Indicator	Indicates if the package is marked with ingredients.
Package Marked With Net Content Indicator	Indicates if the package is marked with net content.
Package Marked Returnable Indicator	Indicates if the package is marked as returnable.
Retail price Marked on Package	A retail price of the product as marked on the package.
Offer Text marked on package, text	A text about an offer marked on the package.
Package Marks containment Code	The code (s) marked on package stating whether or not the product contains or is free from a specific substance.
Package Marks containment Code	The code (s) marked on package stating whether or not the product contains or is free from a specific substance.
Package Marks With Diet Allergen Code	The code (s) marked on the package indicating dietary or allergen information.
Package Marked With Ethical Code	Code of which ethical trading marks that are on the package.
Package Marked With Environment Code	Code of which environmental marks that are on trade item package.
Logistic unit package type code	The code specifying the package type of the logistic unit.
Quantity of product per logistic unit	The quantity of product contained in the logistic unit
Quantity Of Layers of the logistic unit	The quantity of layers for the logistic unit
Quantity Of Product Per Layer of the logistic unit	The quantity of products contained on a single layer of the logistic unit.
Package type code	The code identifying the type of package
Indicator Returnable package/asset	The package of the product is returnable. This is a yes/no (Boolean) where yes equals package can be returned. Attribute applies to returnable package with or without deposit.
Returnable package/asset Deposit value start date	The first date that the deposit value of the returnable package/asset is valid.
Returnable package/asset Deposit value end date	The last date that the deposit value of the returnable package/asset is valid.
Returnable package/asset deposit amount	The monetary amount of the deposit for the individual returnable asset
Returnable package/asset deposit code	The code specifying the returnable package/asset deposit..
Number of items per width	The number of items that are packaged beside each other in the package in the width direction (e.g. on the shelf side facing the consumer).
Quantity Of products (Trade Items) Contained In A Complete Layer	Number of packages in one layer in the product (trade item). Required if the product (trade item) is a pallet.
Returnable package/asset terms and conditions	The coded or textual description of the returnable package/asset terms and conditions, e.g. rented, exchangeable, returnable asset against deposit).
Marks and labels	The marks and labels provided on the package
Packaging information	Information about the packaging for the package.
Recyclable scheme (s) for the packaging, text	The textual description of the scheme(s) under which the packaging is recyclable.
Recyclable type	The code specifying the recyclable type for the packaging marked on the product.
Packaging material	Information about the material composition of the packaging
Packaging Material code	The code detailing the package material for the packaging.
Packaging Material Code List Maintenance Agency Text	A code identifying the agency that is maintaining packaging material codes.
Packaging Material percentage	A percentage of the specified material in the packaging.

Term	Definition
Packaging Material Weight	A weight of the specified material in the packaging
Packaging Material description	The textual description of the packaging material.
Property	A technical property of the material from which the packaging is composed.
Product Material code	The code detailing the material within the product.
Product Material Agency Code	A code identifying the agency that is maintaining product material codes.
Product Material percentage	A percentage of the material in the product.
Product Material Quantity	A measured quantity of material in the product
Product Material description	The textual description of the product material.
Property	A technical property of the material from which the product is composed.
Product Unit Individual Identification	An identity for the product unit (individual item)
Manufacture DateTime	The date (and time) of manufacture of the Item Instance e.g manufacture date for a used car (second hand).
Registration Identification	The registration identifier of the Item Instance.
Product Instance Serial Number	The serial number of the product instance.
Production Batch Identification	An identification of the production batch of the product.
International Codification Designation, ICD	The ISO-specified data element used to uniquely identify a registration scheme. (ISO/IEC 6523-1)
Organisation Identification, OI	The identifier assigned to an organization within a registration scheme, and unique within that scheme.
Organisation Particular Department Identification, OPI	The identifier allocated to a particular department, service or other entity within an organization
Source of Organisation Particular Identification, OPIS	The data element used to specify the source for the organization part identifier.(ISO/IEC 6523-1)
Number of ISO standard Reference	For referencing standards, here the standard number will be given (e.g. 61360 for the IEC 61360)
ISO standard Part Reference	For referencing standards, here the part of the standard will be given (e.g. 2 for the Part 2 of IEC 61360)
ISO standard Edition Reference	Edition of the ISO standard
Class Code	Gives the identification of the class in the context of the classification / ontology
Class Version Reference	A reference to the version of the class
Property	Used for further specification of product class for the product i.e. GS1 GPC
International Codification Designation, ICD	The ISO-specified data element used to uniquely identify a registration scheme. (ISO/IEC 6523-1)
Organisation Identification, OI	The identifier assigned to an organization within a registration scheme, and unique within that scheme.
Organisation Particular Department Identification, OPI	The identifier allocated to a particular department, service or other entity within an organization
Source of Organisation Particular Identification, OPIS	The data element used to specify the source for the organization part identifier.(ISO/IEC 6523-1)
Number of ISO standard, Reference	For referencing standards, here the standard number will be given (e.g. 61360 for the IEC 61360)
ISO standard Part Reference	For referencing standards, here the part of the standard will be given (e.g. 2 for the Part 2 of IEC 61360)
ISO standard Edition Reference	Edition of the ISO standard
Property Code	Coded representation of the property
Further Categorization Indicator	The indicator indicating that the product is further categorized.

Term	Definition
Version of class	The version of the class
Technical property Type, code	The code specifying the type of technical property
Technical property Type, Text	The textual description of the type of property.
Property Value Text	The value of the property expressed as a textual description.
Property Value Code	The value of the property expressed as a code
Property Value Indicator	The value of the property expressed as an indicator.
Property Value Date Time	The value of the property expressed as a date time.
Property Value Binary	The value of the property expressed in a binary format.
Property Relation Information Text	A textual description of or other information on property relations.
Property definition Reference	The reference to a document, e.g. an ontology or standard, in which the property has been defined
Product Class	The product class that forms the context in which the property is defined.
Property Relation	Related property. E.g. a Voltage at a certain Temperature.
Property Value Quantity	The value of the property expressed as a quantity (measurement) (including unit of measure, UN/ECE rec 20)
Product Specification Document Reference	An associative reference to a document providing product specification information
Code for format for document providing product specification information	A code giving the format of a document providing product specification information.
Lead time	The time taken from the time of order to the time of delivery
Minimum Order quantity	Minimum order quantity for a specific lead time
Maximum Order quantity	Maximum order quantity for a specific lead time
Delivery Location	Delivery locations or areas for items
Delivery Region	Delivery regions for items

37
38

39 **Disclaimer (Updated UN/CEFACT Intellectual Property Rights Policy – ECE/TRADE/C/CEFACT/**
40 **2010/20/Rev.2)**

41

42 ECE draws attention to the possibility that the practice or implementation of its outputs (which include but
43 are not limited to Recommendations, norms, standards, guidelines and technical specifications) may
44 involve the use of a claimed intellectual property right.

45

46 Each output is based on the contributions of participants in the UN/CEFACT process, who have agreed to
47 waive enforcement of their intellectual property rights pursuant to the UN/CEFACT IPR Policy (document
48 ECE/TRADE/C/CEFACT/2010/20/Rev.2 available at http://www.unece.org/cefact/cf_docs.html or from the
49 ECE secretariat). ECE takes no position concerning the evidence, validity or applicability of any claimed
50 intellectual property right or any other right that might be claimed by any third parties related to the
51 implementation of its outputs. ECE makes no representation that it has made any investigation or effort to
52 evaluate any such rights.

53

54 Implementers of UN/CEFACT outputs are cautioned that any third-party intellectual property rights claims
55 related to their use of a UN/CEFACT output will be their responsibility and are urged to ensure that their
56 use of UN/CEFACT outputs does not infringe on an intellectual property right of a third party.

57

58 ECE does not accept any liability for any possible infringement of a claimed intellectual property right or
59 any other right that might be claimed to relate to the implementation of any of its outputs.

60