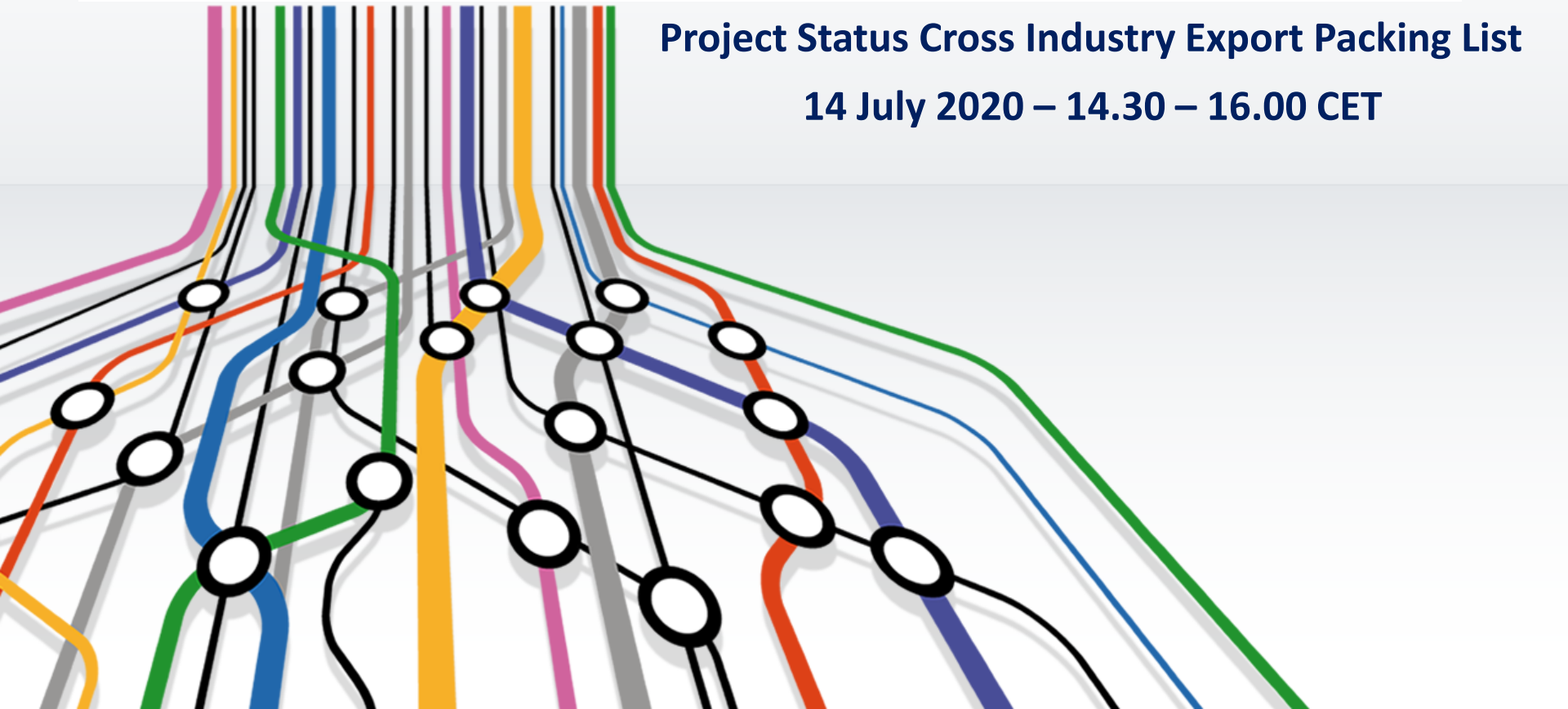


# UN/CEFACT Standards

**Project Status Cross Industry Export Packing List**

**14 July 2020 – 14.30 – 16.00 CET**



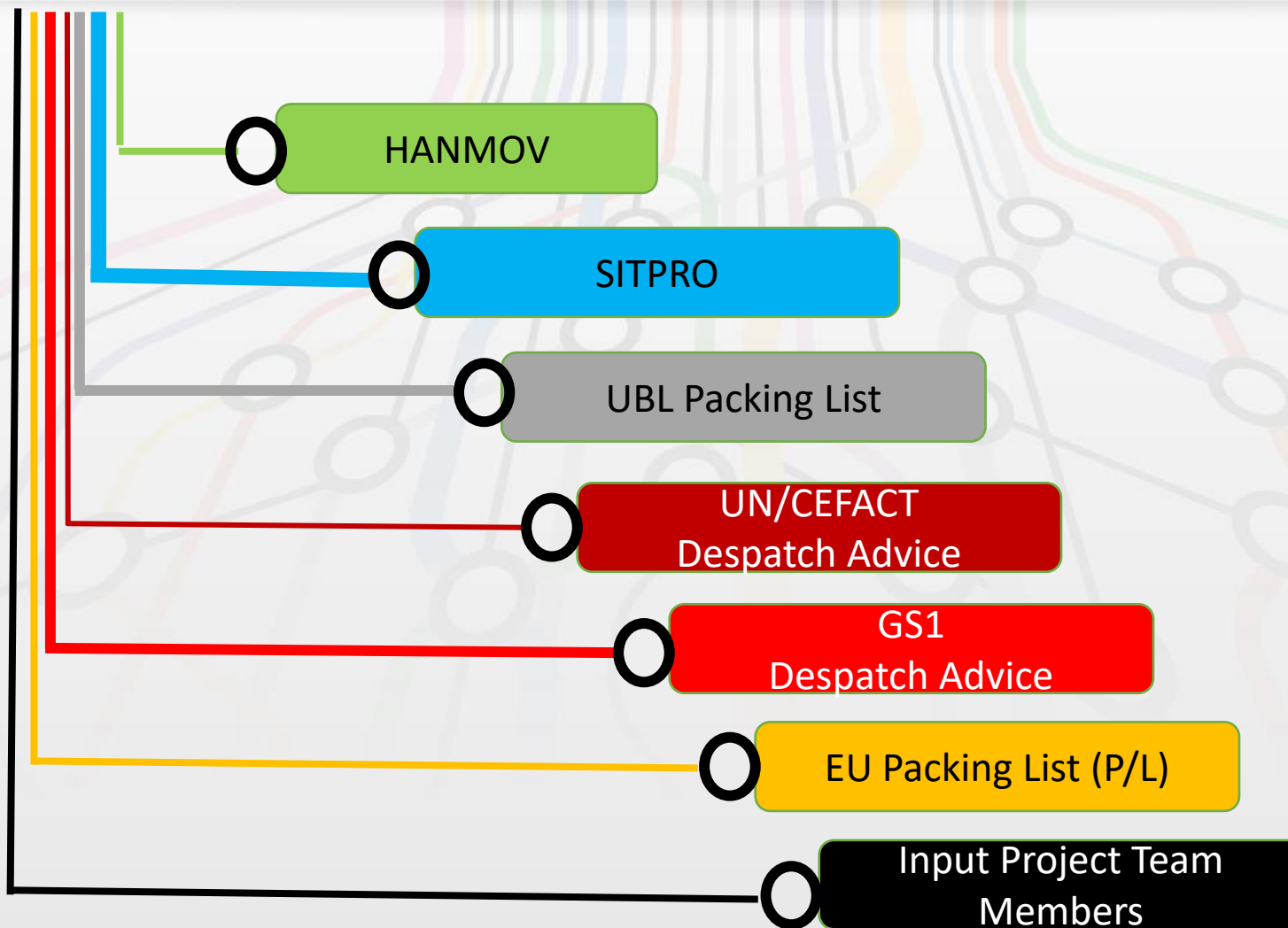
# Project Purpose & Status

- Providing transport services providers with shipment delivery information.
- Though well covered within the UN/CEFACT Core Component Library and the Supply Chain Reference Data Model, many trading partners still use documents such as the UN/EDIFACT HANMOV.
- Status:
  - Draft BRS is ready for Public Review
  - Submission to Bureau on 17<sup>th</sup> July

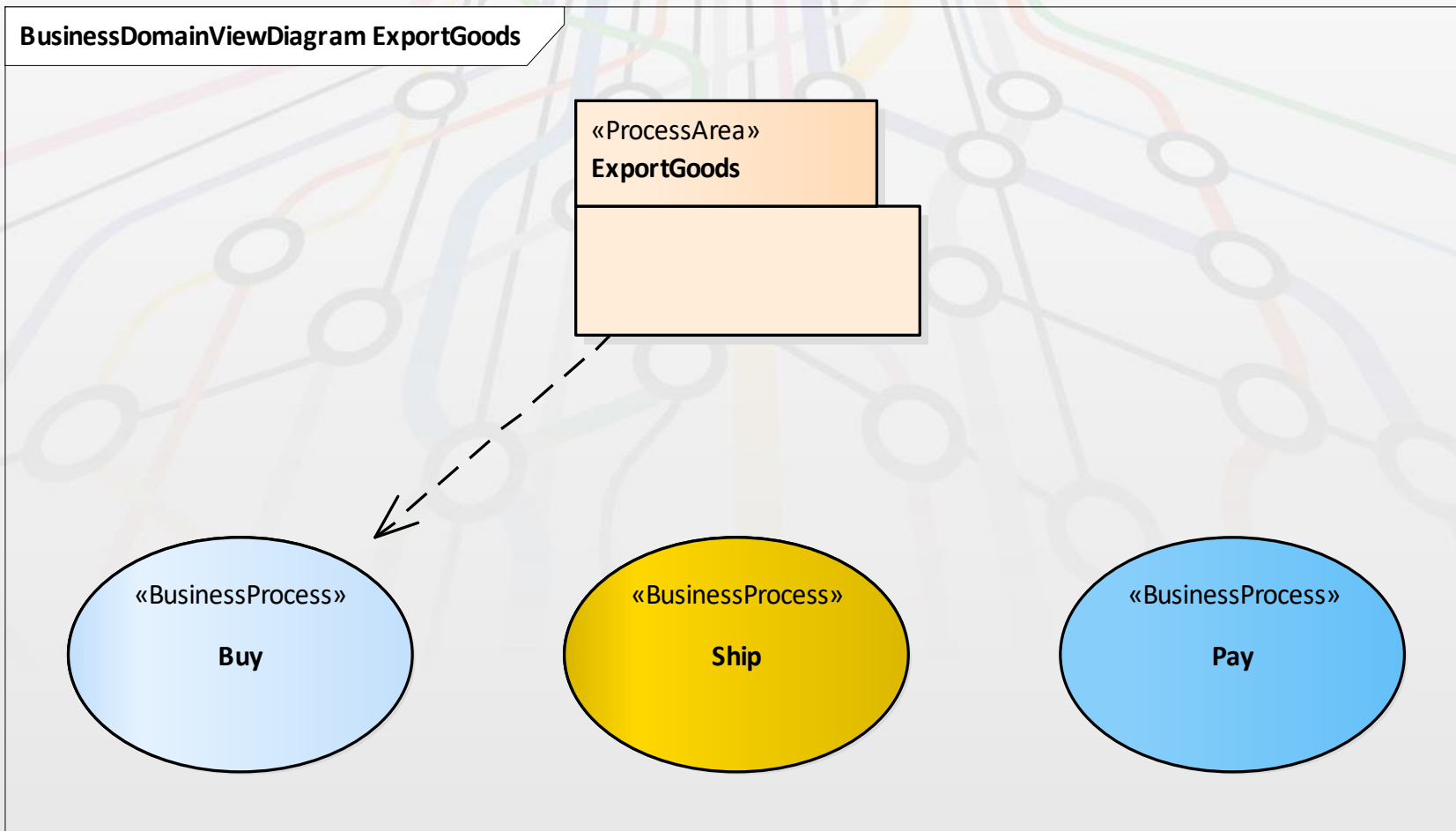
# Project Scope

- **Business Requirement Specification (BRS):**
  - Develop and publish the business requirements.
- **CCBDA Data Model:**
  - Develop and publish the CCBDA message data model.
- **XML Message schema:**
  - Develop and publish the XML schema for the message.

# Initial Contributions



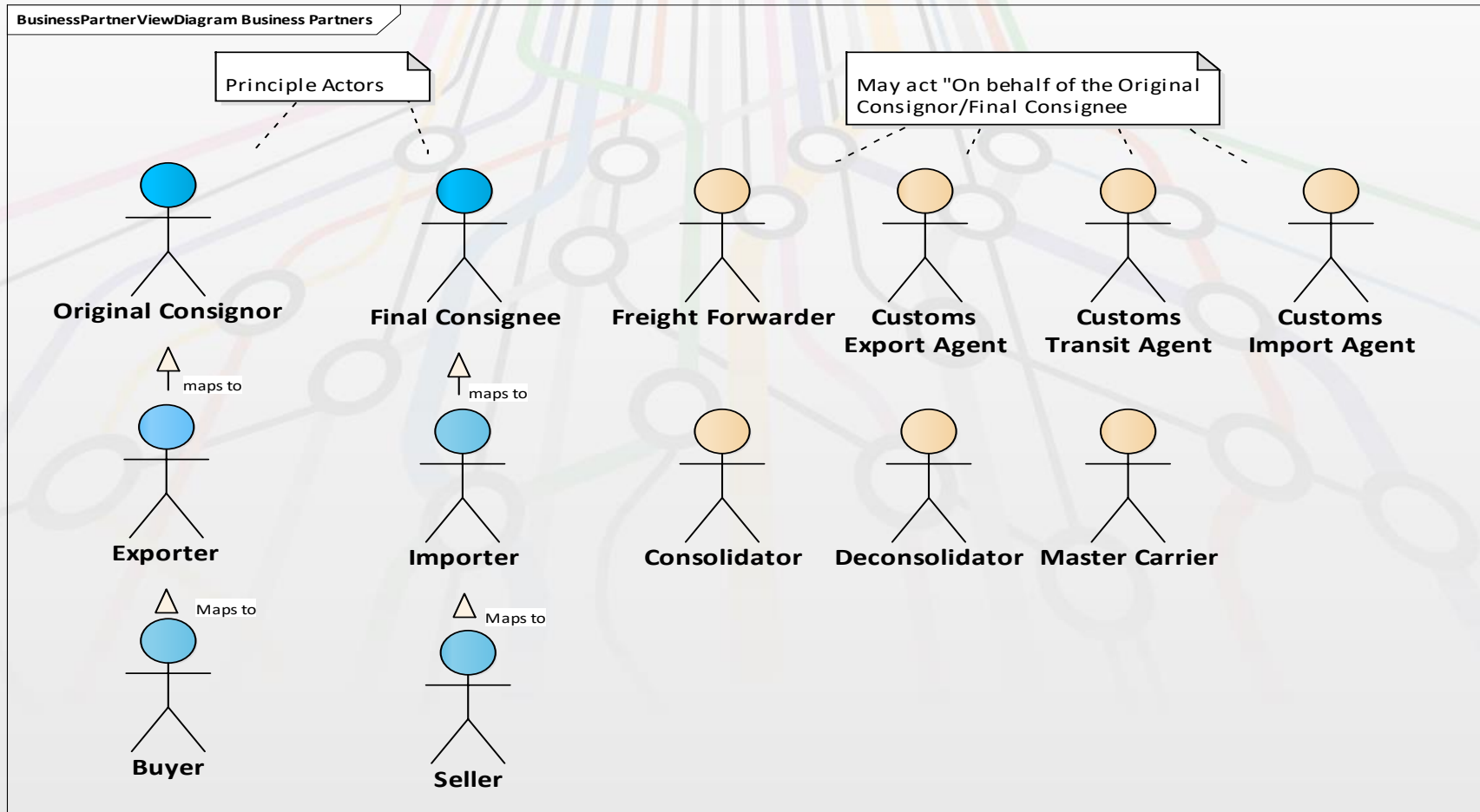
# Positioning Export Packing List within BSP Process Model



# Business Requirements

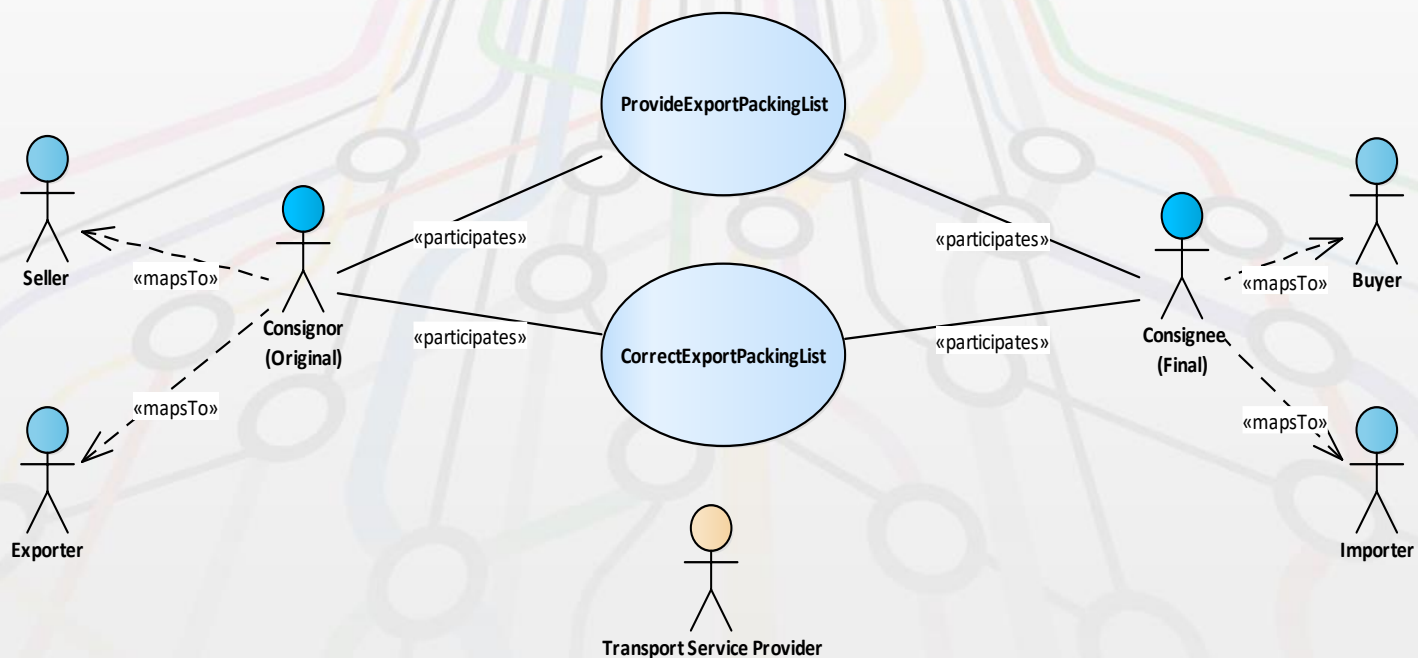
Nr.	Business Requirement Statement
A.1	The transporter will use the Export Packing List to issue a bill of lading (BOL).
A.2	The Export Packing List must match the commercial invoice in quantity, description, and all other items.
A.3	Once the consignment reaches its destination the final consignee should be able to compare what has been ordered to what has been shipped. The Export Packing List can be used as further evidence to support a payment.
A.4	The Export Packing List is the responsibility of the consignor and forwarding agents to determine the total weight and volume of the consignment and should represent the correct information.
A.5	The Export Packing List should avoid delays in clearance at the port of destination.
A.6	Used for the Electronic Export Information (EEI) to verify goods.
A.7	<p>The Export Packing List must comply to the requirements for customs clearance as an inventory of the incoming cargo. The generally included data are:</p> <ul style="list-style-type: none"><li data-bbox="282 886 1425 926">• Information on the exporter, the importer and the transport company.</li><li data-bbox="282 946 562 986">• Date of issue.</li><li data-bbox="282 1006 817 1046">• Number of the freight invoice.</li><li data-bbox="282 1066 1290 1106">• Type of packaging (drum, crate, carton, box, barrel, bag, etc.).</li><li data-bbox="282 1126 678 1166">• Number of packages.</li><li data-bbox="282 1186 1532 1226">• Content of each package (description of goods and no. of items per package).</li><li data-bbox="282 1246 668 1286">• Marks and numbers.</li><li data-bbox="282 1306 1277 1346">• Net weight, gross weight and measurement of the packages.</li></ul>

# Business Partner View



# Use cases

BusinessCollaborationUseCaseDiagram ExportPackingList Process Use Cases

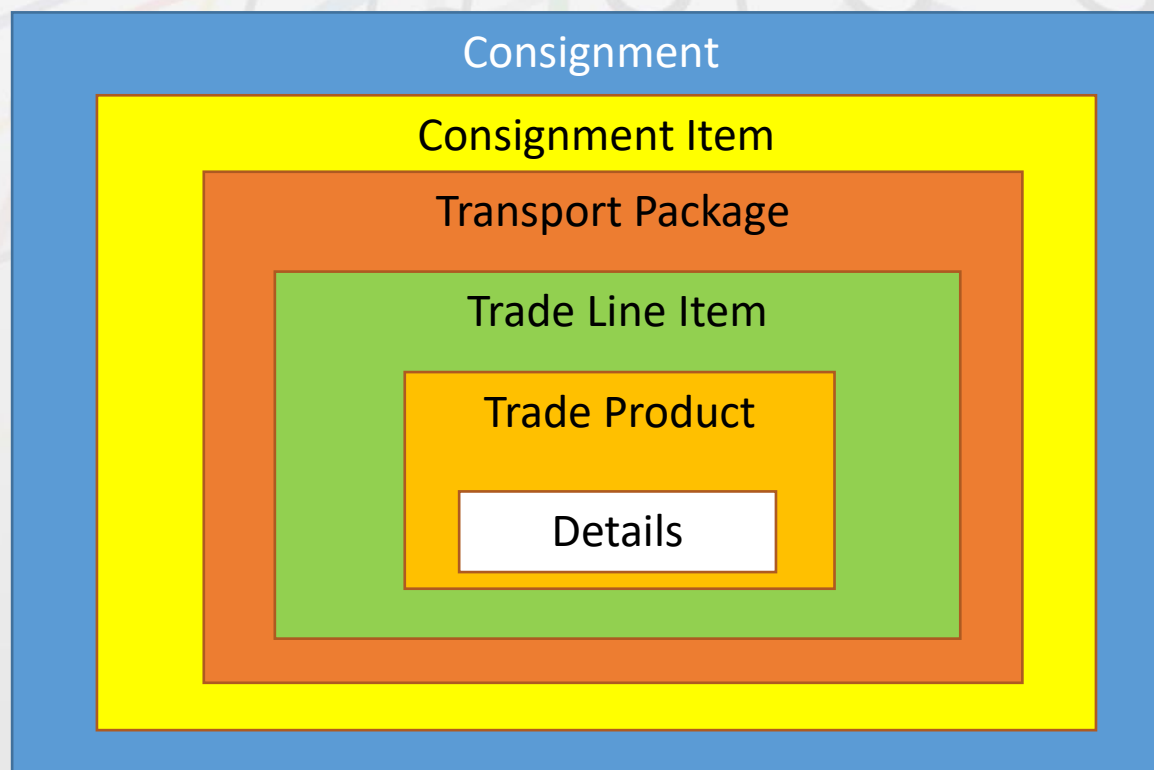


Supporting Role on behalf of the Original Consignor and/or Final Consignee  
(Freight Forwarder, Carrier, Customs Import Agent, Customs Transit Agent)

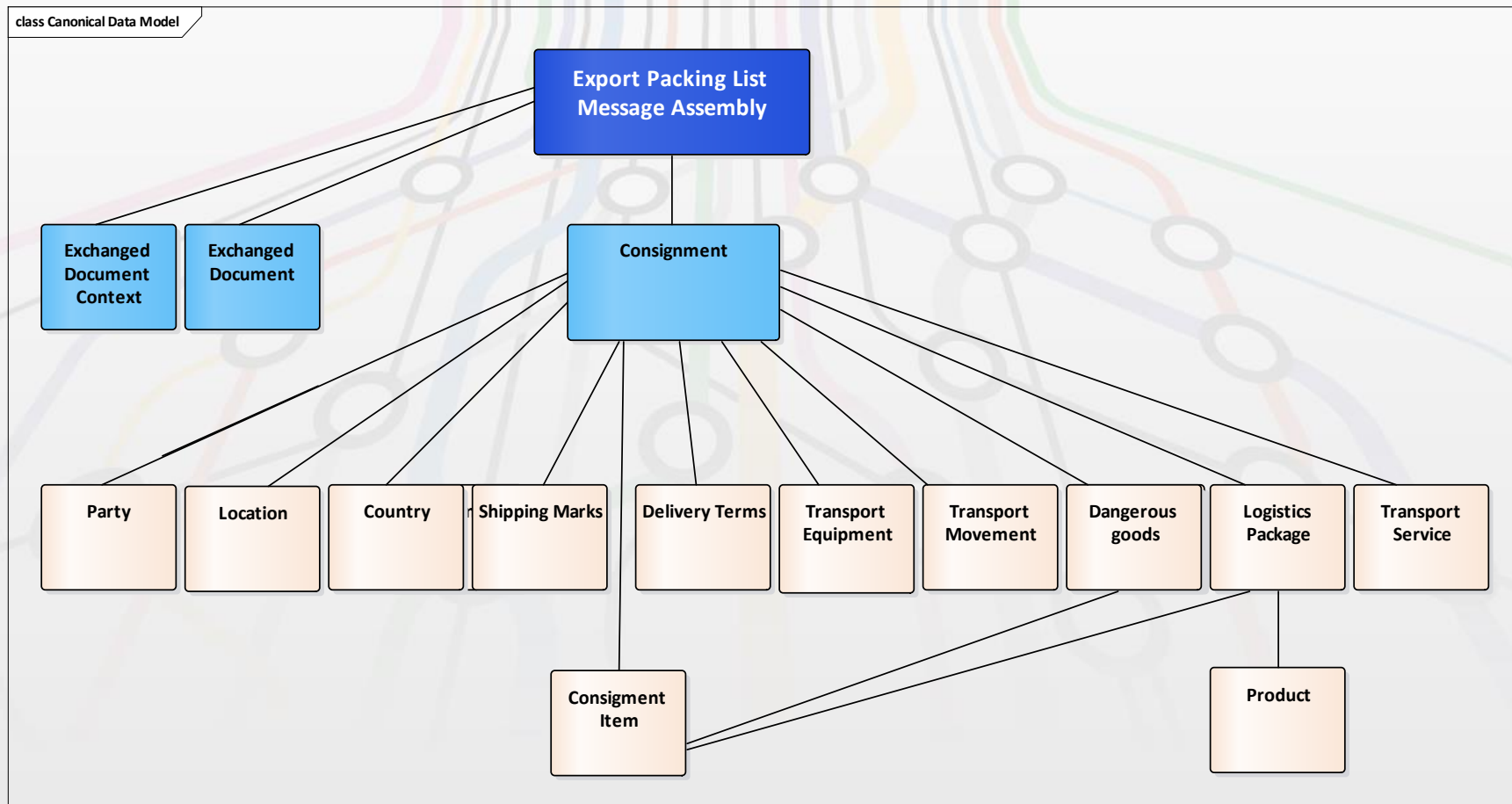


# Design - Consignment as a basis -

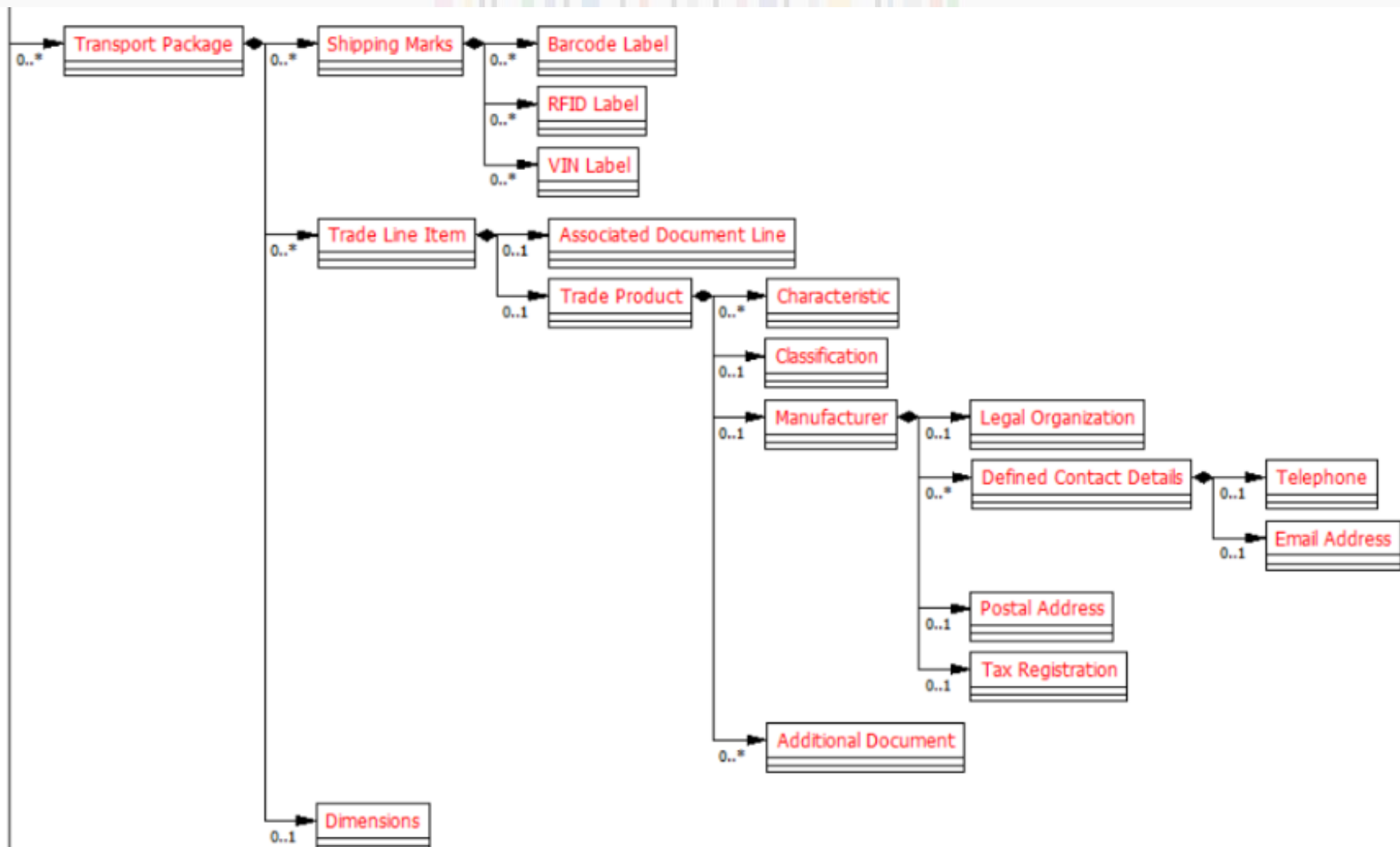
A consignment is a separately identifiable collection of Consignment Items (available to be) transported from one Original Consignor to one Final Consignee via one or more modes of transport as specified in one single transport service contractual document. One or more shipments (a.k.a. a trade delivery) can belong to one consignment.



# Conceptual information model



# Consignment Level Transport Package



# Consignment Item Level Transport Package

